

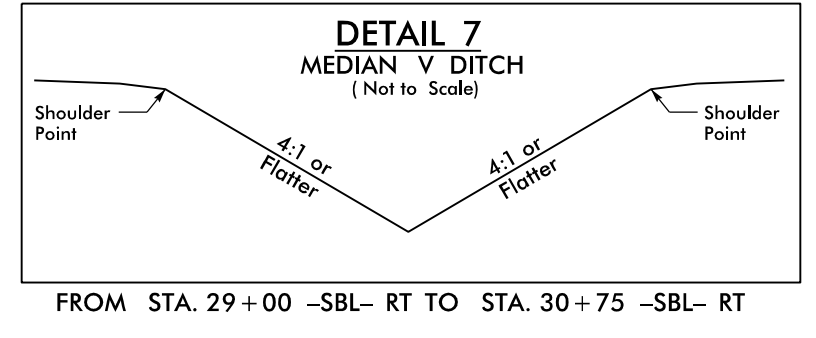
8/17/19

PROJECT REFERENCE NO. B-5783		SHEET NO. 6	
RW SHEET NO.			
ROADWAY DESIGN ENGINEER		HYDRAULIC DESIGN ENGINEER	
TRANSYSTEMS			
DOCUMENT NOT CONSIDERED FINAL UNLESS ALL SIGNATURES COMPLETED			
 DAVENPORT HOME OFFICE 119 BROOKSTOWN AVE, SUITE PH1 WINSTON-SALEM, NC 27101 336.744.1656 www.davenportinc.com NC REG. P.E. LICENSE NO. C-2622			

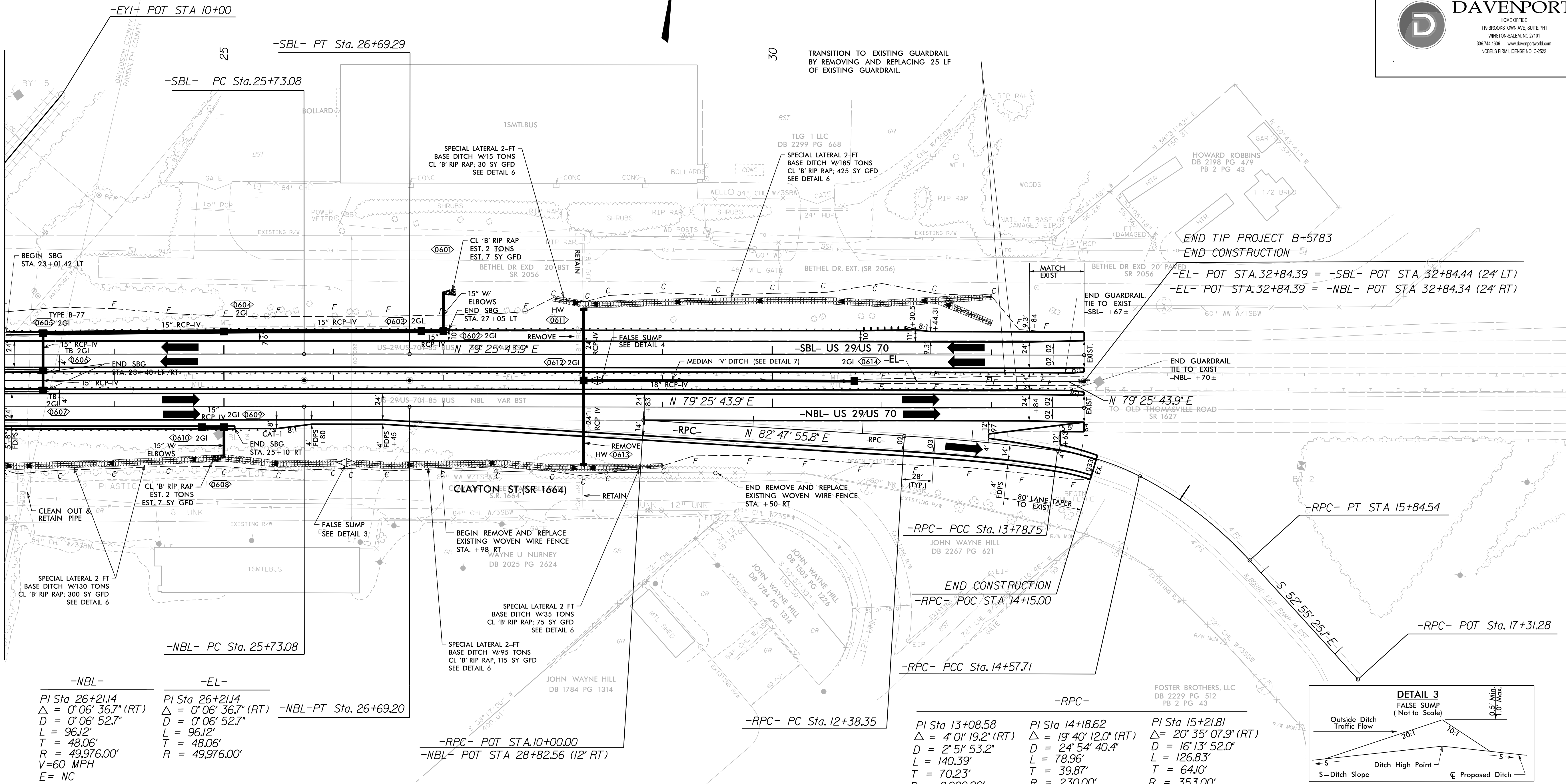
SEE SHEETS 7 TO 10 FOR -NBL- AND -SBL- PROFILES.

SEE SHEET 10 FOR -RPC- PROFILE

-SBL-
 PI Sta 26+21.9
 $\Delta = 0'06"36.7" (RT)$
 $D = 0'06"52.3"$
 $L = 96.2'$
 $T = 48.0'$
 $R = 50,024.00'$
 $V = 60 \text{ MPH}$
 $E = NC$

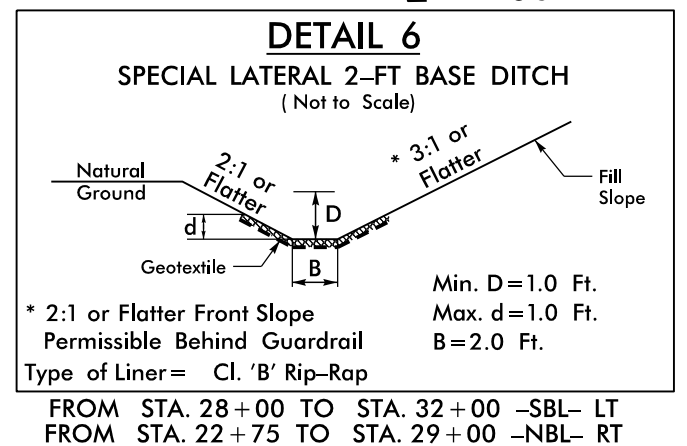
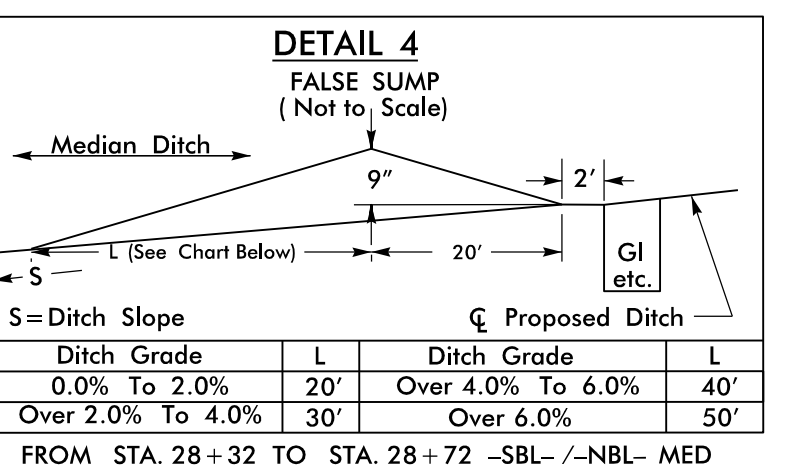


MATCHLINE STA. 23+00 SHEET 5



-NBL-
 PI Sta 26+21.4
 $\Delta = 0'06"36.7" (RT)$
 $D = 0'06"52.7"$
 $L = 96.12'$
 $T = 48.06'$
 $R = 49,976.00'$
 $V = 60 \text{ MPH}$
 $E = NC$

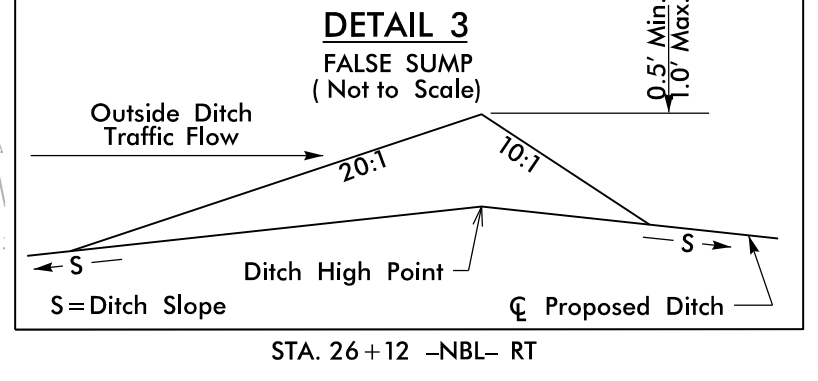
-EL-
 PI Sta 26+21.4
 $\Delta = 0'06"36.7" (RT)$
 $D = 0'06"52.7"$
 $L = 96.12'$
 $T = 48.06'$
 $R = 49,976.00'$



PI Sta 13+08.58
 $\Delta = 4'01"19.2" (RT)$
 $D = 2'51"53.2"$
 $L = 140.39'$
 $T = 70.23'$
 $R = 2,000.00'$
 $V = 50 \text{ MPH}$
 $E = 03$

PI Sta 14+18.62
 $\Delta = 19'40"12.0" (RT)$
 $D = 2'4'54"40.4"$
 $L = 78.96'$
 $T = 39.87'$
 $R = 230.00'$
 $V = 35 \text{ MPH}$
 $E = 03$

PI Sta 15+21.81
 $\Delta = 20'35"07.9" (RT)$
 $D = 16'13"52.0"$
 $L = 126.83'$
 $T = 64.10'$
 $R = 353.00'$
 $V = 35 \text{ MPH}$
 $E = 03$



4:56:15 PM 7/16/2019 1:16:05 NCDDT_B5783_US29-70\DESIGN\B5783\Roadway\Sheets\B5783_RDY_PSH_06.dgn