

8/17/19

CROSS-OVER LOCATION #1: STA.03+85.95 TO STA.08+67.06

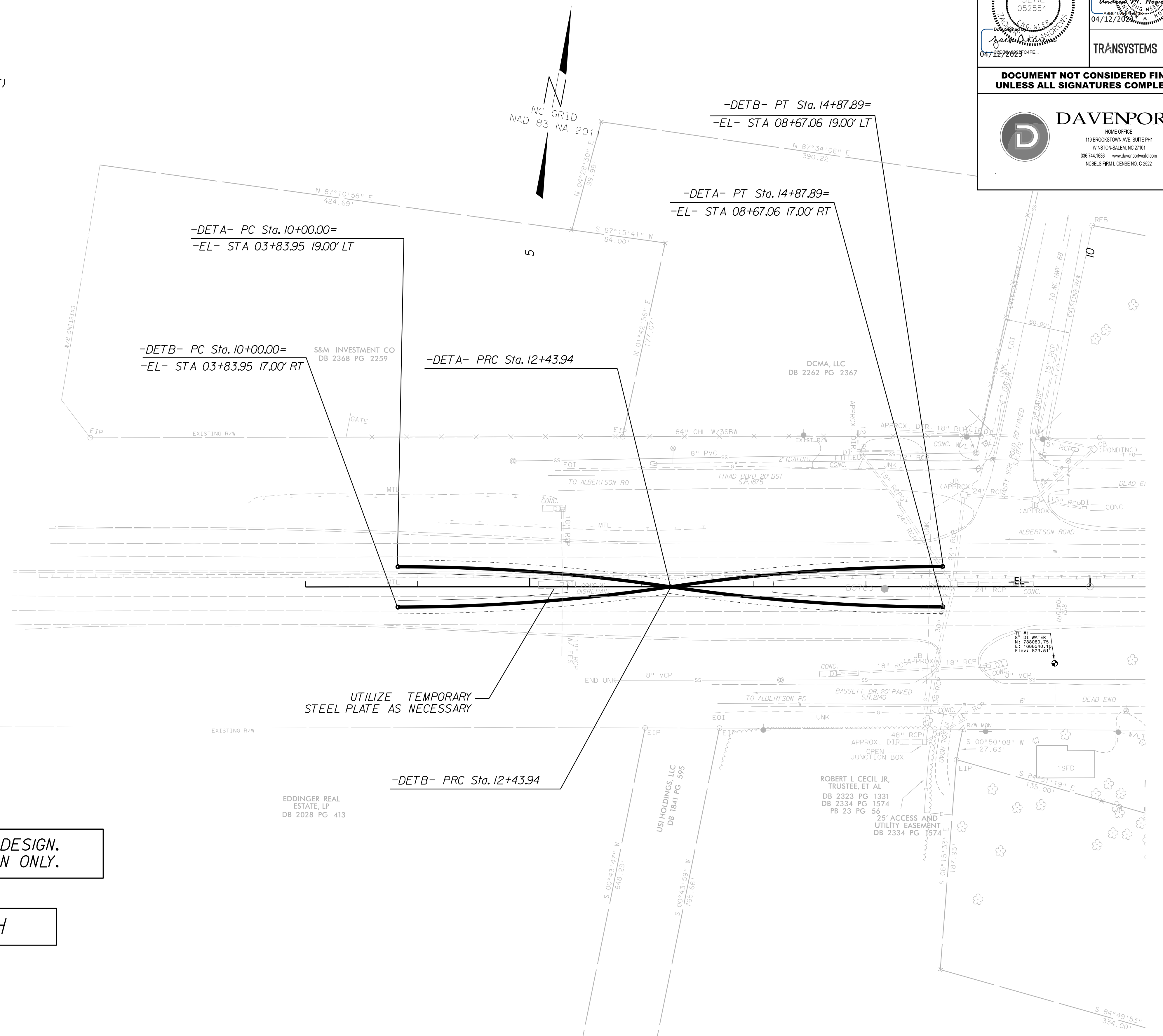
-DETA-

PI Sta 11+22.19	PI Sta 13+66.14
$\Delta = 8' 28' 15.1''$ (RT)	$\Delta = 8' 28' 15.1''$ (LT)
D = 3' 28' 20.9"	D = 3' 28' 20.9"
L = 243.94'	L = 243.94'
T = 122.19'	T = 122.19'
R = 1,650.00'	R = 1,650.00'

-DET B-

PI Sta 11+22.19	PI Sta 13+66.14
$\Delta = 8' 28' 15.1''$ (LT)	$\Delta = 8' 28' 15.1''$ (RT)
D = 3' 28' 20.9"	D = 3' 28' 20.9"
L = 243.94'	L = 243.94'
T = 122.19'	T = 122.19'
R = 1,650.00'	R = 1,650.00'

PROJECT REFERENCE NO. B-5783	SHEET NO. 2B-1
RW SHEET NO.	
ROADWAY DESIGN ENGINEER	HYDRAULIC DESIGN ENGINEER
TRANSYSTEMS	
DOCUMENT NOT CONSIDERED FINAL UNLESS ALL SIGNATURES COMPLETED	
DAVENPORT HOME OFFICE 119 BROOKSTOWN AVE, SUITE PH1 WINSTON-SALEM, NC 27101 336.744.1656 www.davenportme.com NCELS FPM LICENSE NO. C2622	



SEE SHEET 2A-4 FOR DETAIL OF HOURGLASS DESIGN.
USE THIS SHEET FOR DETOUR CONSTRUCTION ONLY.

DETOUR DESIGN SPEED = 45 MPH

4:56:38 PM
 7:20:16 AM
 I:\SEB\zandrews