

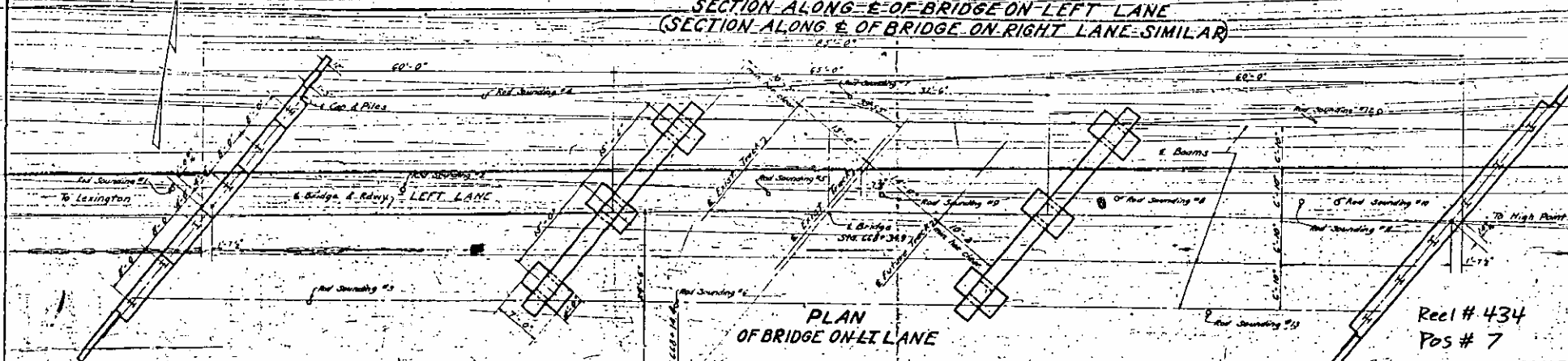
DESIGN DATA

Assumed Live Load	AAS'HO
Design Speed	35 mph
Concrete in Compression	5000 psi
Concrete in Tension	1000 psi
Equivalent Fluid Pressure of Earth	30 lb/ft ²

GENERAL NOTE

CONCRETE: All concrete to be Class "A" Standard. Since 40% coarse aggregate to be used herein, all construction joints will be permitted except where shown on plans. All expansion joints of handrails and expansion joints of bridge girders shall be chartered by contract. Expansion joints shall be chartered by contract unless otherwise noted. All cast-in-place concrete shall be compacted by mechanical vibration.

REINFORCING STEEL: All reinforcement shall be of the type specified. All reinforcement shall be placed in accordance with the specifications. All reinforcement shall be secured by ties or chairs. All reinforcement shall be placed in accordance with the specifications.



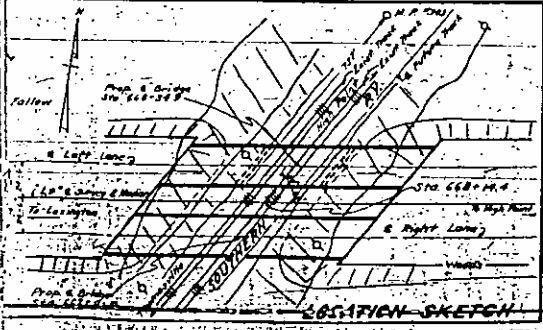
EXPANSION JOINT MATERIAL: Expansion joint material may be either rubber compound or cork depending on the requirements of AAS'HO Spec. M-58.

STRUCTURAL STEEL: Structural steel shall conform to the requirements of the specifications and shall be given one shop coat and one field coat of red lead and flint and two field coats of aluminum paint. Detail drawings for structural steel shall be submitted for approval. No unchecked drawings will be accepted.

NAME PLATES: Two name plates shall be provided for the bridge. One shall be placed on the N.E. end and past of the Left Lane bridge and one on the S.W. end and past of the Right Lane bridge.

MATERIAL AND WORKMANSHIP: All material and workmanship shall be in accordance with the specifications of the N.C. State Highway and Public Works Commission.

EXCAVATION AND FOUNDATION DATA: The excavation and foundation data and all elevations of ground line given are believed to be correct and are furnished for the convenience of the bidders, but the State Highway and Public Works Commission assumes no responsibility for the accuracy as correct or otherwise of the information given. See Specs.



PLAN OF BRIDGE ON LEFT LANE

PLAN OF BRIDGE ON RIGHT LANE SIMILAR TO PLAN SHOWN FOR BRIDGE ON LEFT LANE (Right Lane = #164)

Note: The Contractor will be required to drive one test pile 27' long in End Bent #1 of Right Lane Bridge and one test pile 32' long in End Bent #2 of Right Lane Bridge. Test piles will be paid for as 'Steel Piles.' See Specifications.

PILE SPLICES: For payment for any necessary pile spllices, see Special Provisions.

NOTE: End Bent piles to be driven to a 1 in. bearing capacity of 30 tons each.

COMPUTED FOUNDATION LOAD:
Interior Bents #1 & 2 - 3 1/2 Tons

BILL OF MATERIAL FOR ONE BRIDGE - LEFT LANE

Item	Qty	Unit	Weight	Volume	Value
Superstructure	177.3	Cu. Yds.	36,237	108,300	4600
End Bent #1	14.7	cu. yds.	3,131	9,393	385
End Bent #2	14.7	cu. yds.	3,131	9,393	385
Approach Curbs	1.9	cu. yds.	400	1,200	50
TOTALS	208.6		42,869	128,193	5430

BILL OF MATERIAL FOR ONE BRIDGE - RIGHT LANE

Item	Qty	Unit	Weight	Volume	Value
Superstructure	177.3	Cu. Yds.	36,237	108,300	4600
End Bent #1	14.7	cu. yds.	3,131	9,393	385
End Bent #2	14.7	cu. yds.	3,131	9,393	385
Approach Curbs	1.9	cu. yds.	400	1,200	50
TOTALS	208.6		42,869	128,193	5430

PROJECT NO. 5282

DAVIDSON COUNTY

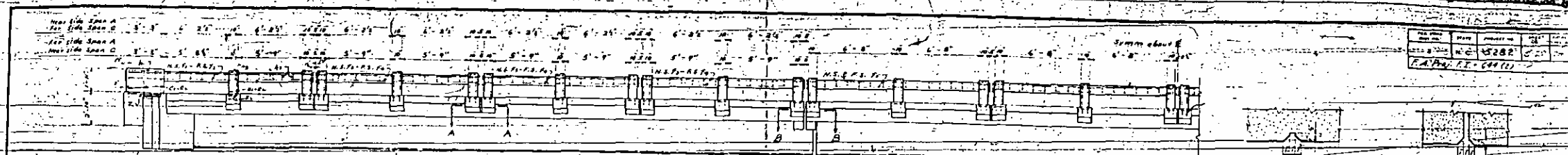
STATION: 668+14.4

Left Lane = Bridge # 168

STATE OF NORTH CAROLINA
STATE HIGHWAY AND
PUBLIC WORKS COMMISSION

GENERAL DRAWING
FOR BRIDGES ON U.S. 29 & 70
OVER SOUTHERN RY.
BETWEEN LEXINGTON AND
HIGH POINT
JUNE, 1942

PROJECT NO.	5282
DATE	1949
SCALE	AS SHOWN
DESIGNED BY	W. H. RAY
CHECKED BY	J. E. COLE

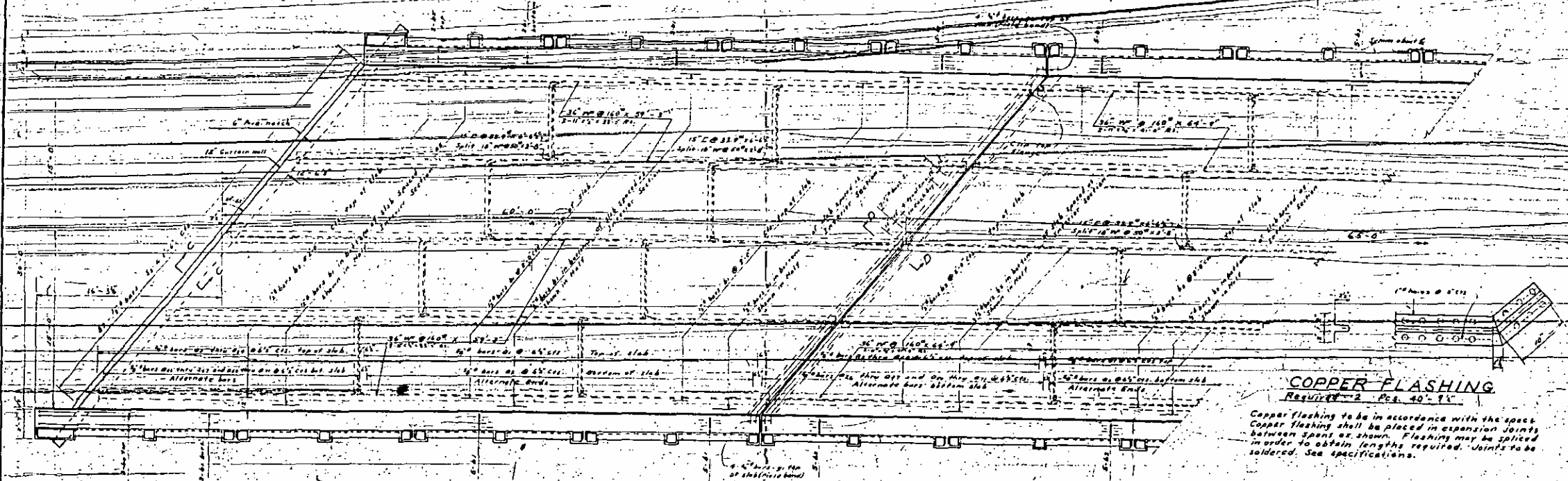


NOTE: For location of fixed and expansion ends of beams see General Details

ELEVATION

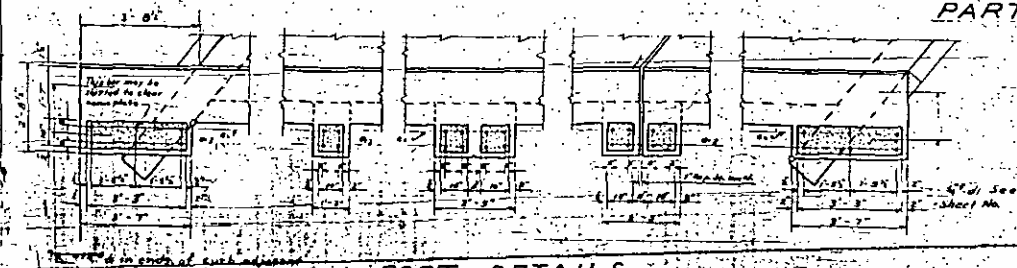
NOTE: Tensile roofing felt shall be placed over joints in expansion waterproofing. See Specifications

SECTION A-A SECTION B-B

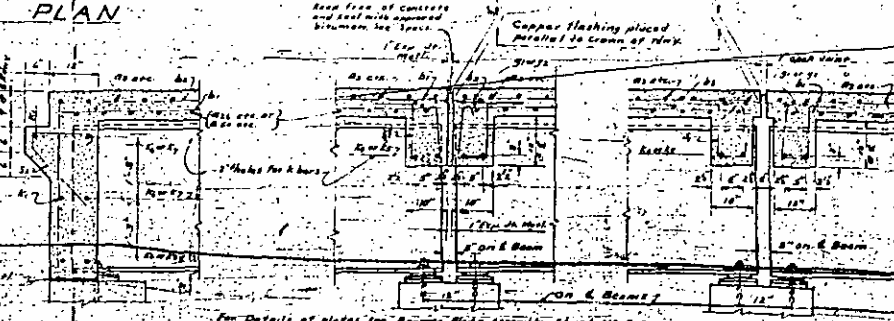


PART PLAN

COPPER FLASHING
 Required - 2 Pcs. 40" x 1"
 Copper flashing to be in accordance with the specs. Copper flashing shall be placed in expansion joints between spans as shown. Flashing may be spliced in order to obtain lengths required. Joints to be soldered. See specifications.



POST DETAILS



SECTION C-C

SECTION D-D

SECTION D-D

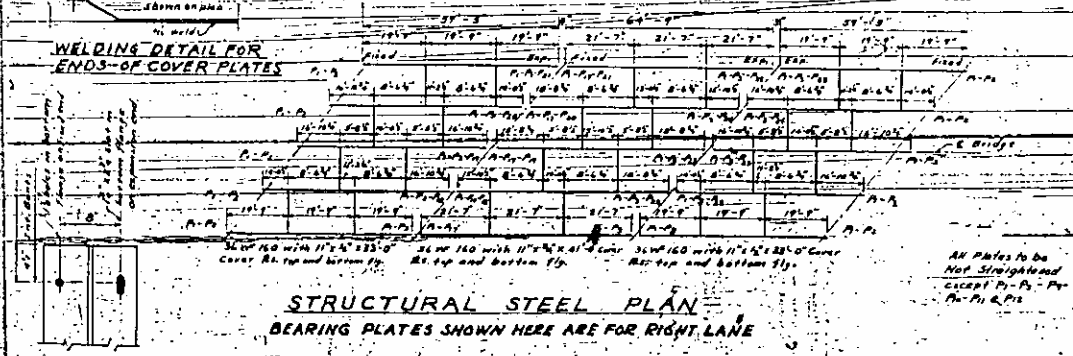
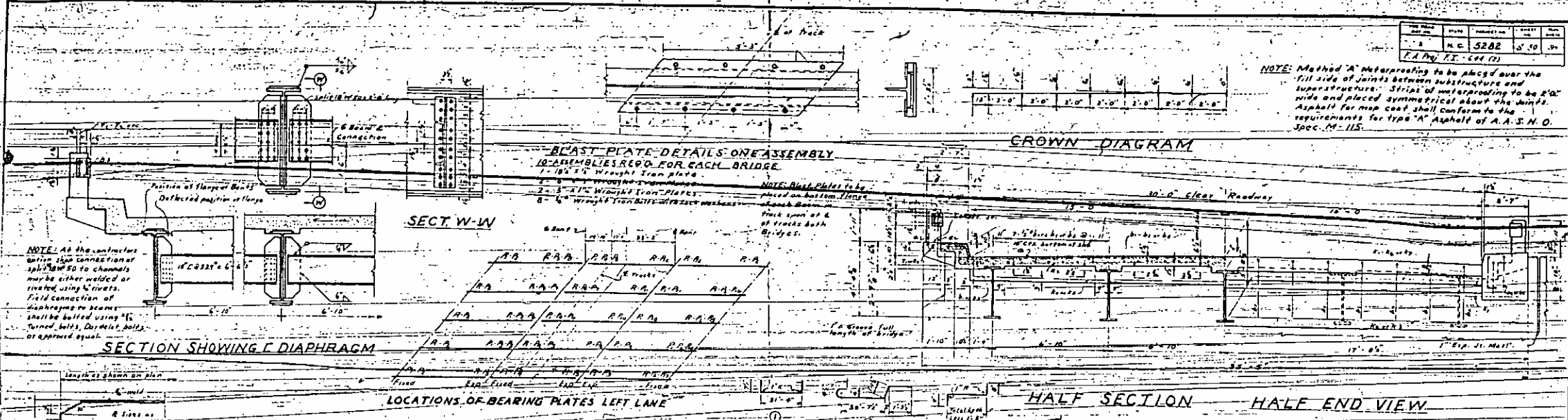
PROJECT NO. 5282
 DAVIDSON COUNTY
 STATION: 662+19.4

STATE OF NORTH CAROLINA STATE HIGHWAY AND PUBLIC WORKS COMMISSION	
SUPERSTRUCTURE RT. & LT. LANE BRIDGES	
AUGUST	1949

DESIGNED BY	W. H. RAY
CHECKED BY	J. E. COLE
DATE	1949
PROJECT NO.	5282
STATION	662+19.4

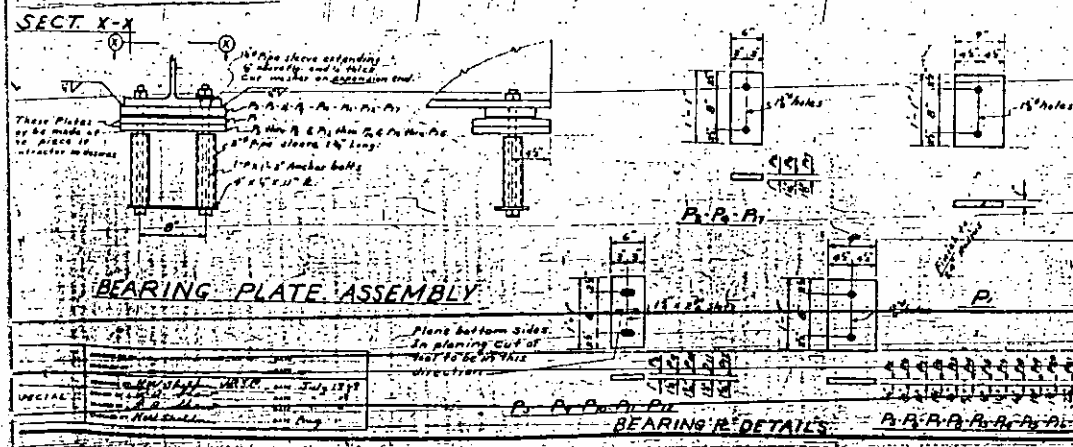
Project No.	5282
Station	668 + 14.4
Scale	1" = 10'
Drawn by	W. H. R. (1)

NOTE: Method "A" waterproofing to be placed over the fill side of joints between substructure and superstructure. Strips of waterproofing to be 2" wide and placed symmetrical about the joints. Asphalt for road coat shall conform to the requirements for type "A" Asphalt of A. A. S. H. O. Spec. M-115.



BILL OF MATERIAL FOR 3 SPANS

Part No.	Qty	Size	Material	Length	Weight	Part No.	Qty	Size	Material	Length	Weight
BEARING PLATES REQUIRED RIGHT LANE											
P1	2	12" x 12" x 1/2"	Struct. Steel	12'-0"	120	P1	2	12" x 12" x 1/2"	Struct. Steel	12'-0"	120
P2	2	12" x 12" x 1/2"	Struct. Steel	12'-0"	120	P2	2	12" x 12" x 1/2"	Struct. Steel	12'-0"	120
LEFT LANE											
P3	2	12" x 12" x 1/2"	Struct. Steel	12'-0"	120	P3	2	12" x 12" x 1/2"	Struct. Steel	12'-0"	120
P4	2	12" x 12" x 1/2"	Struct. Steel	12'-0"	120	P4	2	12" x 12" x 1/2"	Struct. Steel	12'-0"	120



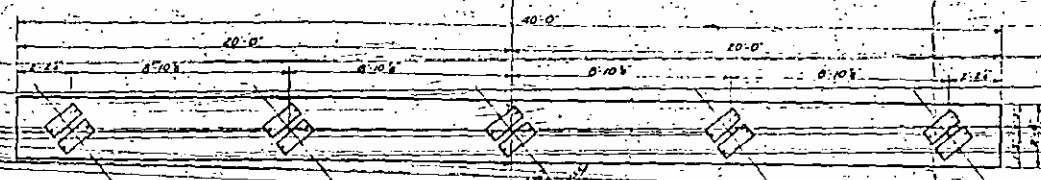
PROJECT NO. 5282
 DAVIDSON COUNTY
 STATION: 668 + 14.4

STATE OF NORTH CAROLINA
 STATE HIGHWAY AND
 PUBLIC WORKS COMMISSION

**SUPERSTRUCTURE
 RT. & LT. LANE BRIDGES**

AUGUST 1949

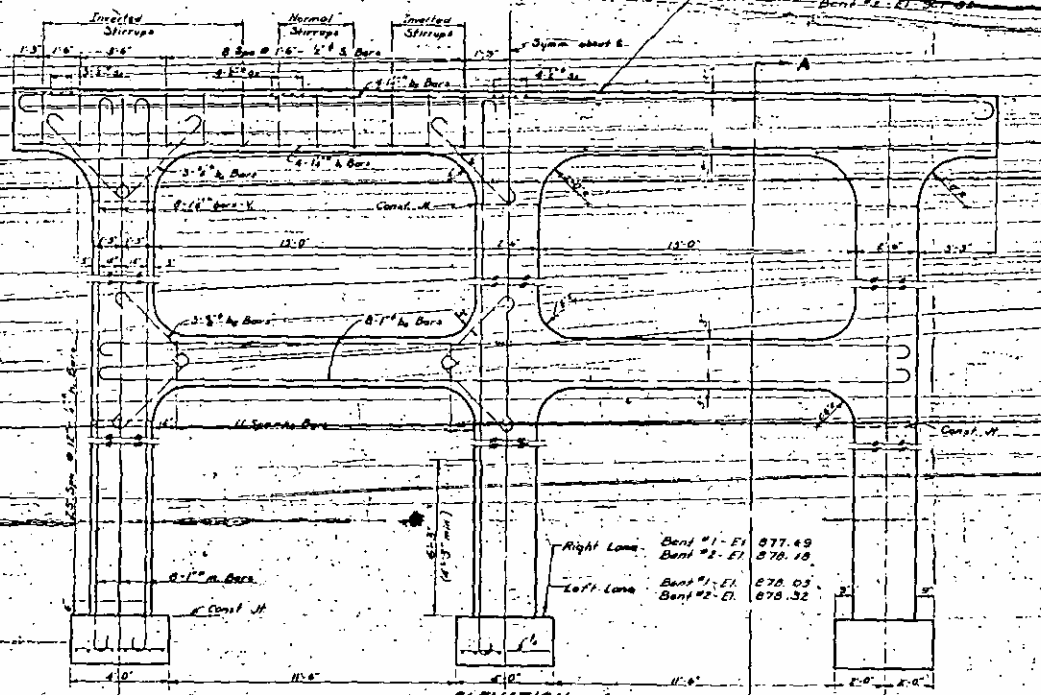
PROJECT NO.	DATE	SCALE
5282	7-1-44	1/4" = 1'-0"



PLAN OF CAP



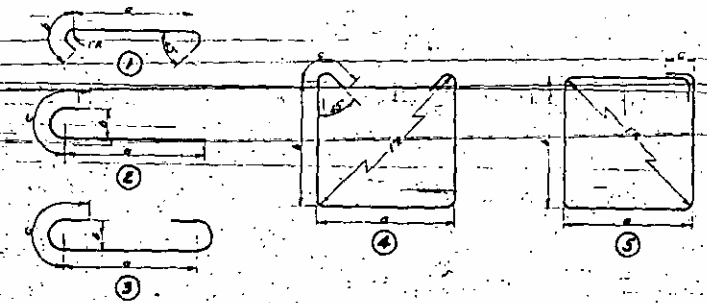
ANCHOR BOLT DETAIL



ELEVATION



SECTION A-A



PLAN OF FOOTING

SPECIAL INSTRUCTIONS

1. All concrete to be Class 'A'.	2. All steel to be A36.
3. All reinforcement to be welded.	4. All reinforcement to be lap welded.
5. All reinforcement to be lap welded.	6. All reinforcement to be lap welded.

Note: Computed Foundation load per sq ft = 3.5 tons

BILL OF MATERIAL - 1 BENT

Bar No.	Size	Type	A	B	C	Length	Weight
1	1/2"	St	35'-0"	0	1'-6"	19.9	842
2	3/4"	Bar	4'-0"	4	1'-0"	45.0	933
3	3/4"	Bar	22'-0"	6	7'-3"	35.3	733
4	3/4"	Bar	3'-6"	4	7'-0"	5'-6"	138
5	3/4"	Bar	2'-0"	2	3'-0"	11.8	242
6	3/4"	Bar	2'-0"	2	3'-0"	11.8	242
7	3/4"	Bar	2'-0"	2	3'-0"	11.8	242
8	3/4"	Bar	2'-0"	2	3'-0"	11.8	242
9	3/4"	Bar	2'-0"	2	3'-0"	11.8	242
10	3/4"	Bar	2'-0"	2	3'-0"	11.8	242
11	3/4"	Bar	2'-0"	2	3'-0"	11.8	242
12	3/4"	Bar	2'-0"	2	3'-0"	11.8	242
13	3/4"	Bar	2'-0"	2	3'-0"	11.8	242
14	3/4"	Bar	2'-0"	2	3'-0"	11.8	242
15	3/4"	Bar	2'-0"	2	3'-0"	11.8	242
16	3/4"	Bar	2'-0"	2	3'-0"	11.8	242
17	3/4"	Bar	2'-0"	2	3'-0"	11.8	242
18	3/4"	Bar	2'-0"	2	3'-0"	11.8	242
19	3/4"	Bar	2'-0"	2	3'-0"	11.8	242
20	3/4"	Bar	2'-0"	2	3'-0"	11.8	242
21	3/4"	Bar	2'-0"	2	3'-0"	11.8	242
22	3/4"	Bar	2'-0"	2	3'-0"	11.8	242
23	3/4"	Bar	2'-0"	2	3'-0"	11.8	242
24	3/4"	Bar	2'-0"	2	3'-0"	11.8	242
25	3/4"	Bar	2'-0"	2	3'-0"	11.8	242
26	3/4"	Bar	2'-0"	2	3'-0"	11.8	242
27	3/4"	Bar	2'-0"	2	3'-0"	11.8	242
28	3/4"	Bar	2'-0"	2	3'-0"	11.8	242
29	3/4"	Bar	2'-0"	2	3'-0"	11.8	242
30	3/4"	Bar	2'-0"	2	3'-0"	11.8	242
31	3/4"	Bar	2'-0"	2	3'-0"	11.8	242
32	3/4"	Bar	2'-0"	2	3'-0"	11.8	242
33	3/4"	Bar	2'-0"	2	3'-0"	11.8	242
34	3/4"	Bar	2'-0"	2	3'-0"	11.8	242
35	3/4"	Bar	2'-0"	2	3'-0"	11.8	242
36	3/4"	Bar	2'-0"	2	3'-0"	11.8	242
37	3/4"	Bar	2'-0"	2	3'-0"	11.8	242
38	3/4"	Bar	2'-0"	2	3'-0"	11.8	242
39	3/4"	Bar	2'-0"	2	3'-0"	11.8	242
40	3/4"	Bar	2'-0"	2	3'-0"	11.8	242
41	3/4"	Bar	2'-0"	2	3'-0"	11.8	242
42	3/4"	Bar	2'-0"	2	3'-0"	11.8	242
43	3/4"	Bar	2'-0"	2	3'-0"	11.8	242
44	3/4"	Bar	2'-0"	2	3'-0"	11.8	242
45	3/4"	Bar	2'-0"	2	3'-0"	11.8	242
46	3/4"	Bar	2'-0"	2	3'-0"	11.8	242
47	3/4"	Bar	2'-0"	2	3'-0"	11.8	242
48	3/4"	Bar	2'-0"	2	3'-0"	11.8	242
49	3/4"	Bar	2'-0"	2	3'-0"	11.8	242
50	3/4"	Bar	2'-0"	2	3'-0"	11.8	242
51	3/4"	Bar	2'-0"	2	3'-0"	11.8	242
52	3/4"	Bar	2'-0"	2	3'-0"	11.8	242
53	3/4"	Bar	2'-0"	2	3'-0"	11.8	242
54	3/4"	Bar	2'-0"	2	3'-0"	11.8	242
55	3/4"	Bar	2'-0"	2	3'-0"	11.8	242
56	3/4"	Bar	2'-0"	2	3'-0"	11.8	242
57	3/4"	Bar	2'-0"	2	3'-0"	11.8	242
58	3/4"	Bar	2'-0"	2	3'-0"	11.8	242
59	3/4"	Bar	2'-0"	2	3'-0"	11.8	242
60	3/4"	Bar	2'-0"	2	3'-0"	11.8	242
61	3/4"	Bar	2'-0"	2	3'-0"	11.8	242
62	3/4"	Bar	2'-0"	2	3'-0"	11.8	242
63	3/4"	Bar	2'-0"	2	3'-0"	11.8	242
64	3/4"	Bar	2'-0"	2	3'-0"	11.8	242
65	3/4"	Bar	2'-0"	2	3'-0"	11.8	242
66	3/4"	Bar	2'-0"	2	3'-0"	11.8	242
67	3/4"	Bar	2'-0"	2	3'-0"	11.8	242
68	3/4"	Bar	2'-0"	2	3'-0"	11.8	242
69	3/4"	Bar	2'-0"	2	3'-0"	11.8	242
70	3/4"	Bar	2'-0"	2	3'-0"	11.8	242
71	3/4"	Bar	2'-0"	2	3'-0"	11.8	242
72	3/4"	Bar	2'-0"	2	3'-0"	11.8	242
73	3/4"	Bar	2'-0"	2	3'-0"	11.8	242
74	3/4"	Bar	2'-0"	2	3'-0"	11.8	242
75	3/4"	Bar	2'-0"	2	3'-0"	11.8	242
76	3/4"	Bar	2'-0"	2	3'-0"	11.8	242
77	3/4"	Bar	2'-0"	2	3'-0"	11.8	242
78	3/4"	Bar	2'-0"	2	3'-0"	11.8	242
79	3/4"	Bar	2'-0"	2	3'-0"	11.8	242
80	3/4"	Bar	2'-0"	2	3'-0"	11.8	242
81	3/4"	Bar	2'-0"	2	3'-0"	11.8	242
82	3/4"	Bar	2'-0"	2	3'-0"	11.8	242
83	3/4"	Bar	2'-0"	2	3'-0"	11.8	242
84	3/4"	Bar	2'-0"	2	3'-0"	11.8	242
85	3/4"	Bar	2'-0"	2	3'-0"	11.8	242
86	3/4"	Bar	2'-0"	2	3'-0"	11.8	242
87	3/4"	Bar	2'-0"	2	3'-0"	11.8	242
88	3/4"	Bar	2'-0"	2	3'-0"	11.8	242
89	3/4"	Bar	2'-0"	2	3'-0"	11.8	242
90	3/4"	Bar	2'-0"	2	3'-0"	11.8	242
91	3/4"	Bar	2'-0"	2	3'-0"	11.8	242
92	3/4"	Bar	2'-0"	2	3'-0"	11.8	242
93	3/4"	Bar	2'-0"	2	3'-0"	11.8	242
94	3/4"	Bar	2'-0"	2	3'-0"	11.8	242
95	3/4"	Bar	2'-0"	2	3'-0"	11.8	242
96	3/4"	Bar	2'-0"	2	3'-0"	11.8	242
97	3/4"	Bar	2'-0"	2	3'-0"	11.8	242
98	3/4"	Bar	2'-0"	2	3'-0"	11.8	242
99	3/4"	Bar	2'-0"	2	3'-0"	11.8	242
100	3/4"	Bar	2'-0"	2	3'-0"	11.8	242

PROJECT NO. 5282
 DAVIDSON COUNTY
 STATION: 668+14.4
 RT. / LT. LANES
 BENTS 1&2
 STATE OF NORTH CAROLINA
 STATE HIGHWAY AND
 PUBLIC WORKS COMMISSION
 SUBSTRUCTURE DETAILS
 FOR BRIDGE ON U.S. 29 / TO
 OVER SOUTHERN RY.
 BETWEEN LEXINGTON AND
 HIGH POINT
 JULY 1949

J.P. [Signature]
 W.H. [Signature]