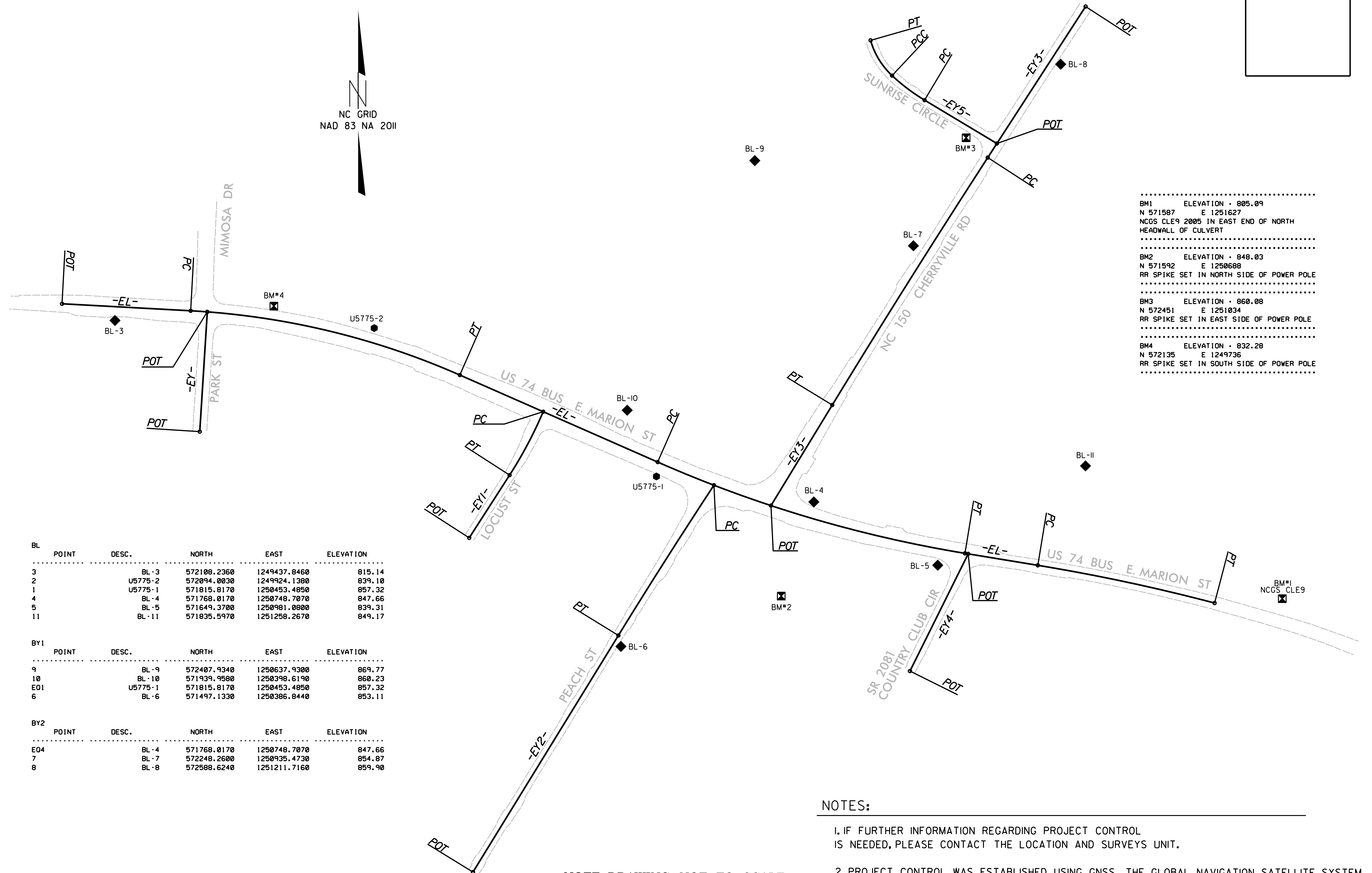


3/27/19

PROJECT REFERENCE NO.	SHEET NO.
U-5775	RW02C-1
Location and Surveys	

SURVEY CONTROL SHEET

W/EXISTING CENTERLINE ALIGNMENTS PRIOR TO CONSTRUCTION



.....

BM1 ELEVATION • 805.09
 N 571587 E 1251627
 NCGS CLE9 2005 IN EAST END OF NORTH
 HEADWALL OF CULVERT

BM2 ELEVATION • 848.03
 N 571592 E 1250688
 RR SPIKE SET IN NORTH SIDE OF POWER POLE

BM3 ELEVATION • 860.08
 N 572451 E 1251034
 RR SPIKE SET IN EAST SIDE OF POWER POLE

BM4 ELEVATION • 832.28
 N 572135 E 1249736
 RR SPIKE SET IN SOUTH SIDE OF POWER POLE

BL	POINT	DESC.	NORTH	EAST	ELEVATION
3	BL - 3		572108.2360	1249437.8460	815.14
2	U5775-2		572094.0030	1249924.1380	839.10
1	U5775-1		571815.8170	1250453.4850	857.32
4	BL - 4		571768.0170	1250748.7070	847.66
5	BL - 5		571649.3700	1250981.0800	839.31
11	BL - 11		571835.5970	1251258.2670	849.17

BY1	POINT	DESC.	NORTH	EAST	ELEVATION
9	BL - 9		572407.9340	1250637.9300	869.77
10	BL - 10		571939.9580	1250398.6190	860.23
E01	U5775-1		571815.8170	1250453.4850	857.32
6	BL - 6		571497.1330	1250386.8440	853.11

BY2	POINT	DESC.	NORTH	EAST	ELEVATION
E04	BL - 4		571768.0170	1250748.7070	847.66
7	BL - 7		572248.2600	1250935.4730	854.87
8	BL - 8		572588.6240	1251211.7160	859.90

NOTES:

1. IF FURTHER INFORMATION REGARDING PROJECT CONTROL IS NEEDED, PLEASE CONTACT THE LOCATION AND SURVEYS UNIT.
2. PROJECT CONTROL WAS ESTABLISHED USING GNSS, THE GLOBAL NAVIGATION SATELLITE SYSTEM.

NOTE: DRAWING NOT TO SCALE

07-MAR-2019 10:53:44
 C:\P\175\17512-17-070_RW\U5775-1.s_rw02c-1.dgn
 User: jforbes