

5/14/99

FINAL EROSION CONTROL FOR
CONSTRUCTION SHEET 8

Kimley Horn

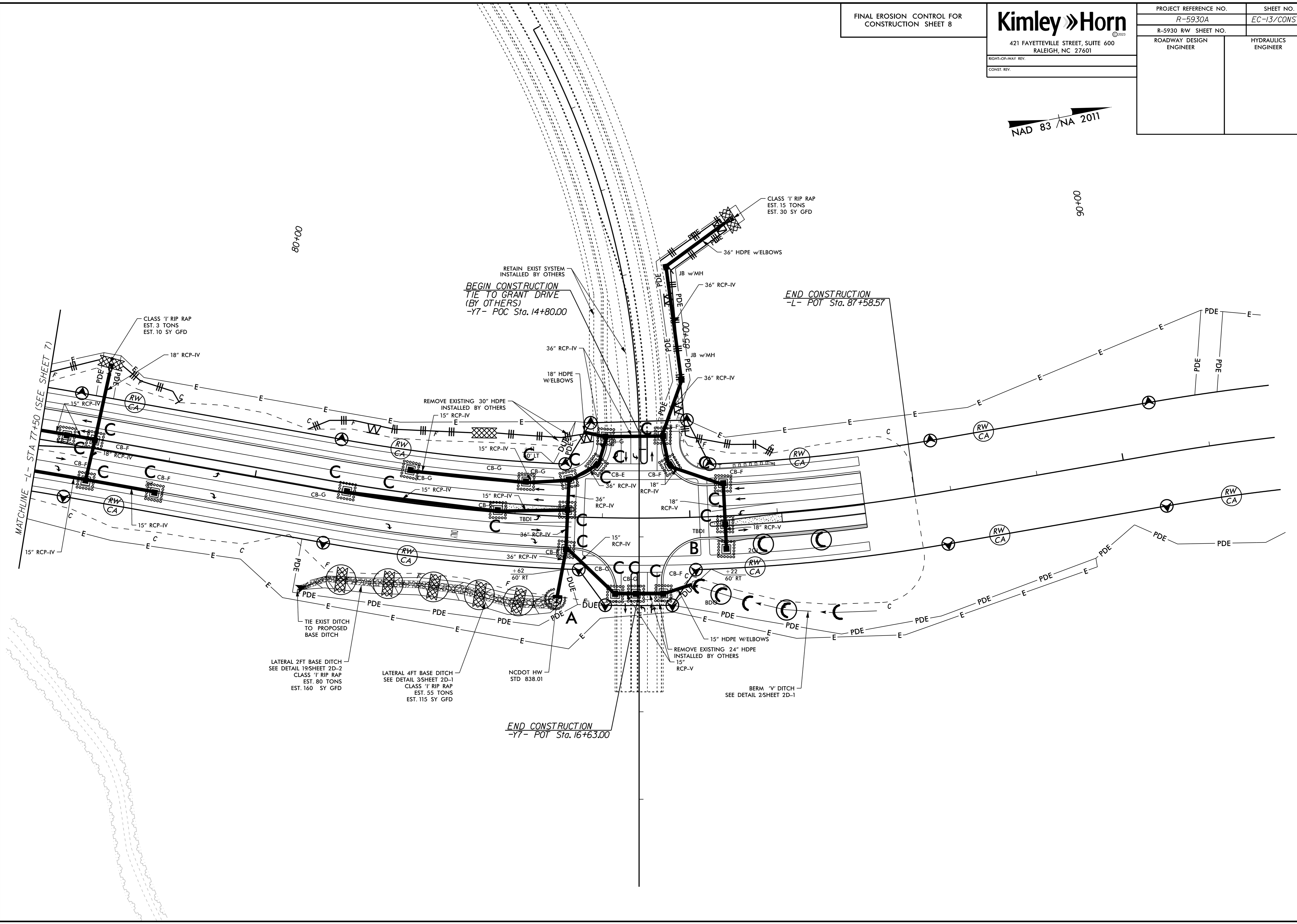
421 FAYETTEVILLE STREET, SUITE 600
RALEIGH, NC 27601

RIGHT-OF-WAY REV.
CONST. REV.

PROJECT REFERENCE NO. R-5930A	SHEET NO. EC-13/CONST.8
R-5930 RW SHEET NO.	HYDRAULICS ENGINEER
ROADWAY DESIGN ENGINEER	ENGINEER

NAD 83 / NA 2011

REVISIONS



MATCHLINE -L- STA 77+50 (SEE SHEET 7)

80+00

90+00

RETAIN EXIST SYSTEM
INSTALLED BY OTHERS
BEGIN CONSTRUCTION
TIE TO GRANT DRIVE
(BY OTHERS)
-Y7- POT Sta. 14+80.00

END CONSTRUCTION
-L- POT Sta. 87+58.57

END CONSTRUCTION
-Y7- POT Sta. 16+63.00

CLASS '1' RIP RAP
EST. 3 TONS
EST. 10 SY GFD

CLASS '1' RIP RAP
EST. 15 TONS
EST. 30 SY GFD

REMOVE EXISTING 30\"/> HDPE
INSTALLED BY OTHERS

REMOVE EXISTING 24\"/> HDPE
INSTALLED BY OTHERS

LATERAL 2FT BASE DITCH
SEE DETAIL 19/SHEET 2D-2
CLASS '1' RIP RAP
EST. 80 TONS
EST. 160 SY GFD

LATERAL 4FT BASE DITCH
SEE DETAIL 3/SHEET 2D-1
CLASS '1' RIP RAP
EST. 55 TONS
EST. 115 SY GFD

BERM 'V' DITCH
SEE DETAIL 2/SHEET 2D-1

NCDOT HW
STD 838.01

