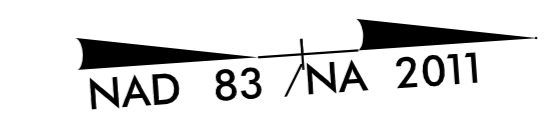


5/14/99

FINAL EROSION CONTROL FOR CONSTRUCTION SHEET 7

PROJECT REFERENCE NO. R-5930A		SHEET NO. EC-12/CONST.7	
R-5930 RW SHEET NO.		ROADWAY DESIGN ENGINEER	
421 FAYETTEVILLE STREET, SUITE 600 RALEIGH, NC 27601		HYDRAULICS ENGINEER	
RIGHT-OF-WAY REV.		CONST. REV.	

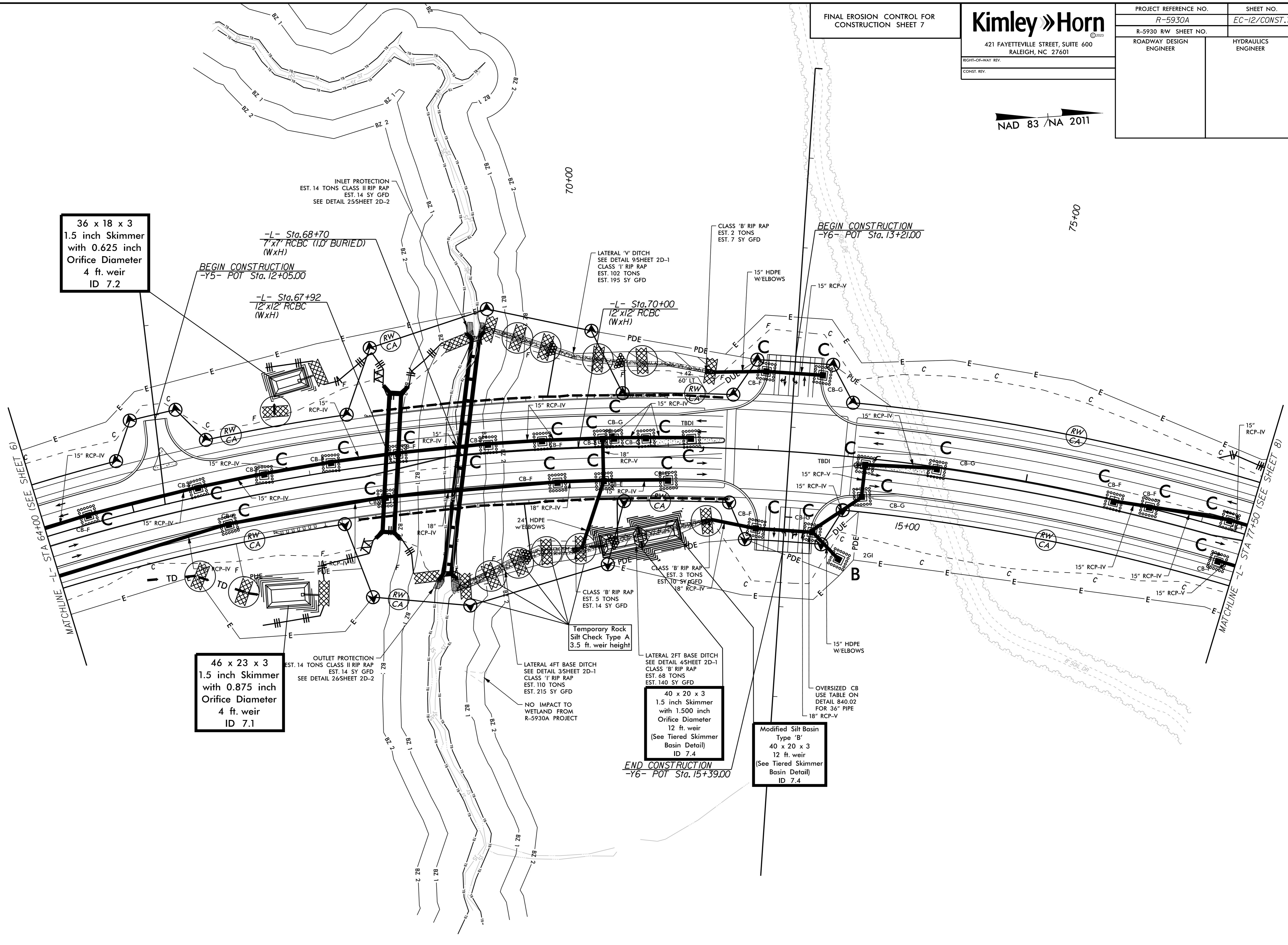


36 x 18 x 3
1.5 inch Skimmer
with 0.625 inch
Orifice Diameter
4 ft. weir
ID 7.2

46 x 23 x 3
1.5 inch Skimmer
with 0.875 inch
Orifice Diameter
4 ft. weir
ID 7.1

40 x 20 x 3
1.5 inch Skimmer
with 1.500 inch
Orifice Diameter
12 ft. weir
(See Tiered Skimmer
Basin Detail)
ID 7.4

Modified Silt Basin
Type 'B'
40 x 20 x 3
12 ft. weir
(See Tiered Skimmer
Basin Detail)
ID 7.4



REVISIONS

MATCHLINE -L- STA 64+00 (SEE SHEET 6)

MATCHLINE -L- STA 77+50 (SEE SHEET 8)

INLET PROTECTION
EST. 14 TONS CLASS II RIP RAP
EST. 14 SY GFD
SEE DETAIL 25 SHEET 2D-2

BEGIN CONSTRUCTION
-Y5- POT Sta. 12+05.00

BEGIN CONSTRUCTION
-Y6- POT Sta. 13+21.00

END CONSTRUCTION
-Y6- POT Sta. 15+39.00

NO IMPACT TO
WETLAND FROM
R-5930A PROJECT

OVERSIZED CB
USE TABLE ON
DETAIL 840.02
FOR 36\"/>