

5/14/99

PROJECT REFERENCE NO. R-5930A	SHEET NO. EC-7A/CONST.7
ROADWAY DESIGN ENGINEER	HYDRAULICS ENGINEER

# CULVERT CONSTRUCTION SEQUENCE STA. 68+70-L-

## PHASE I

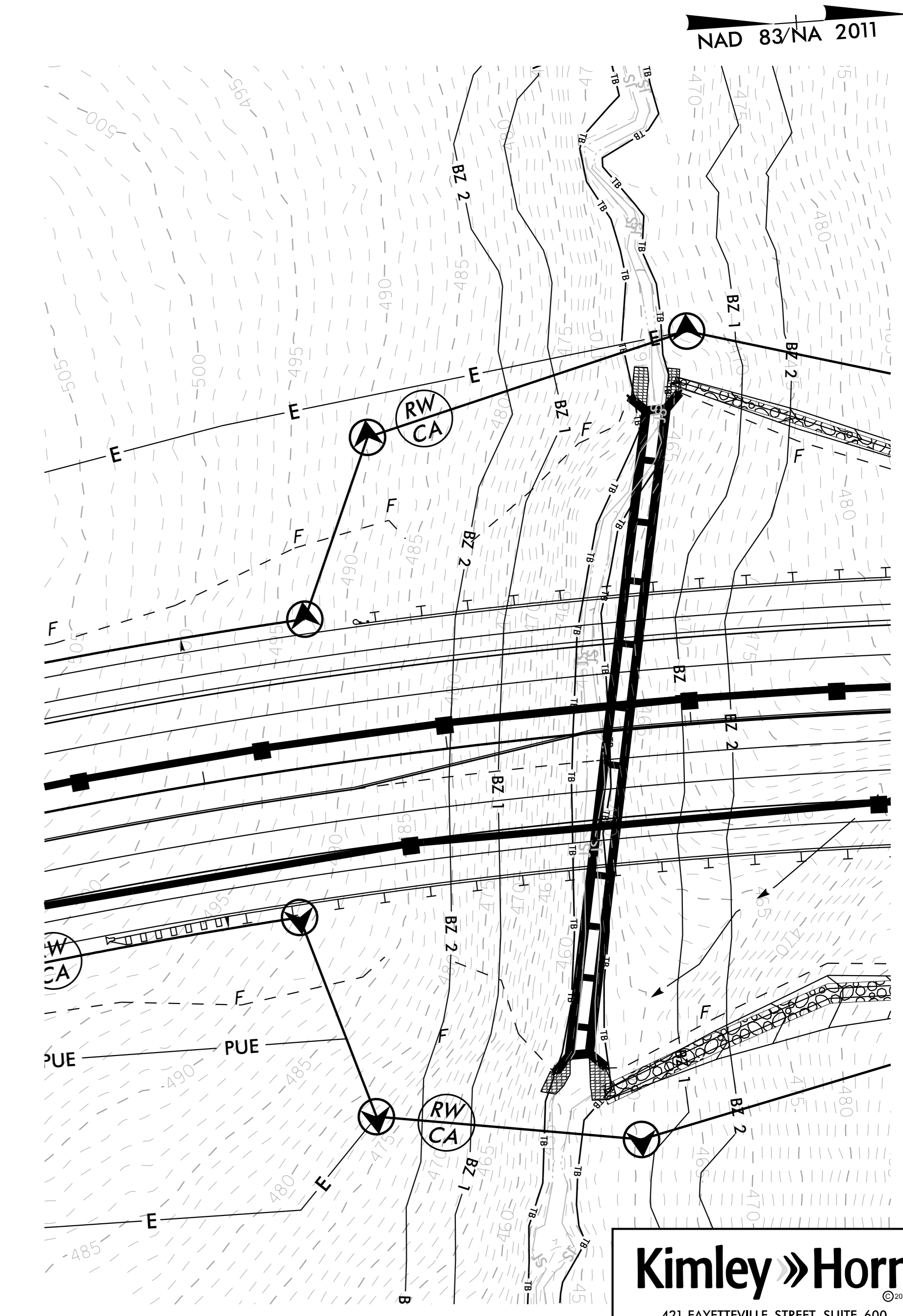
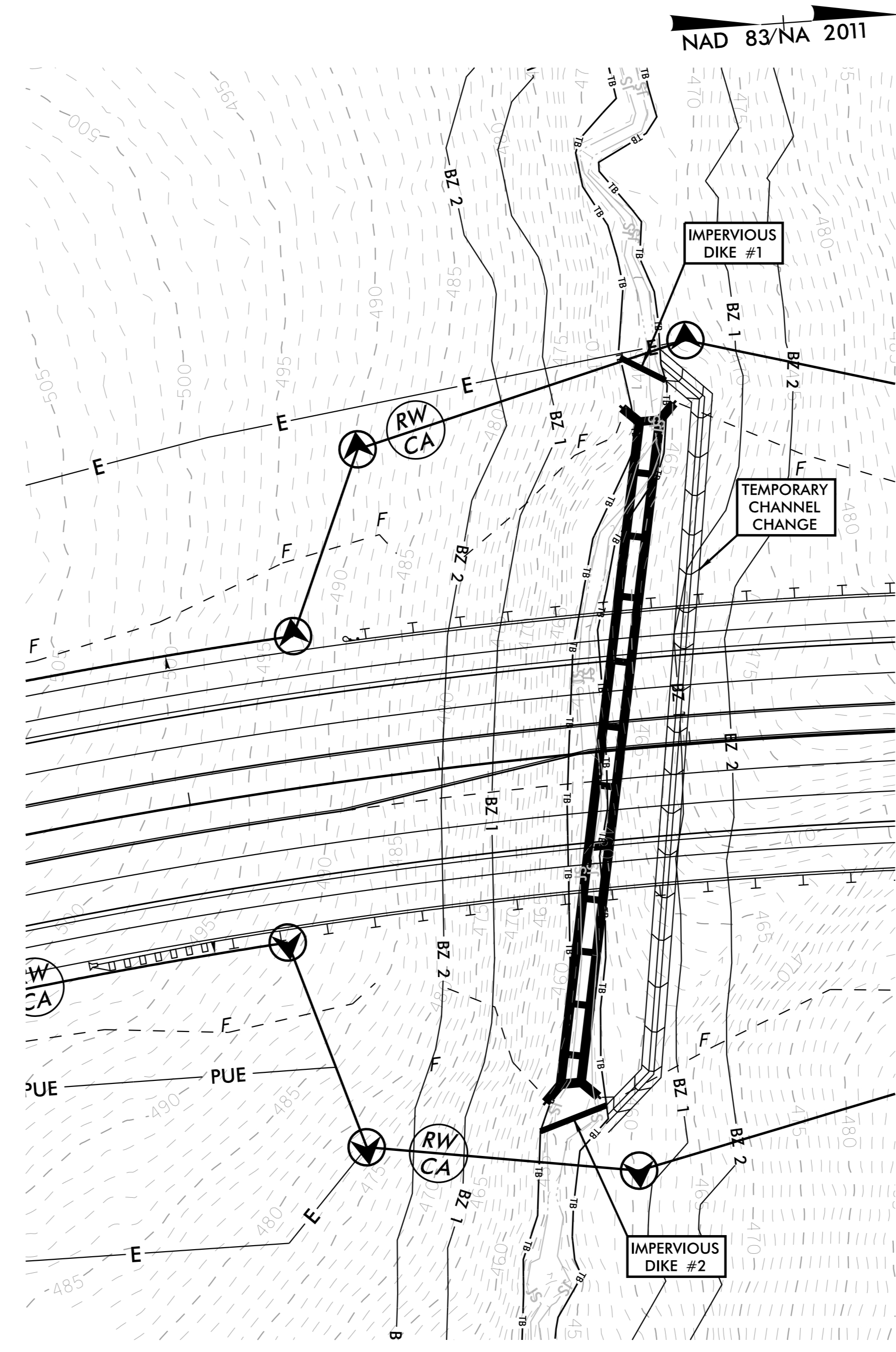
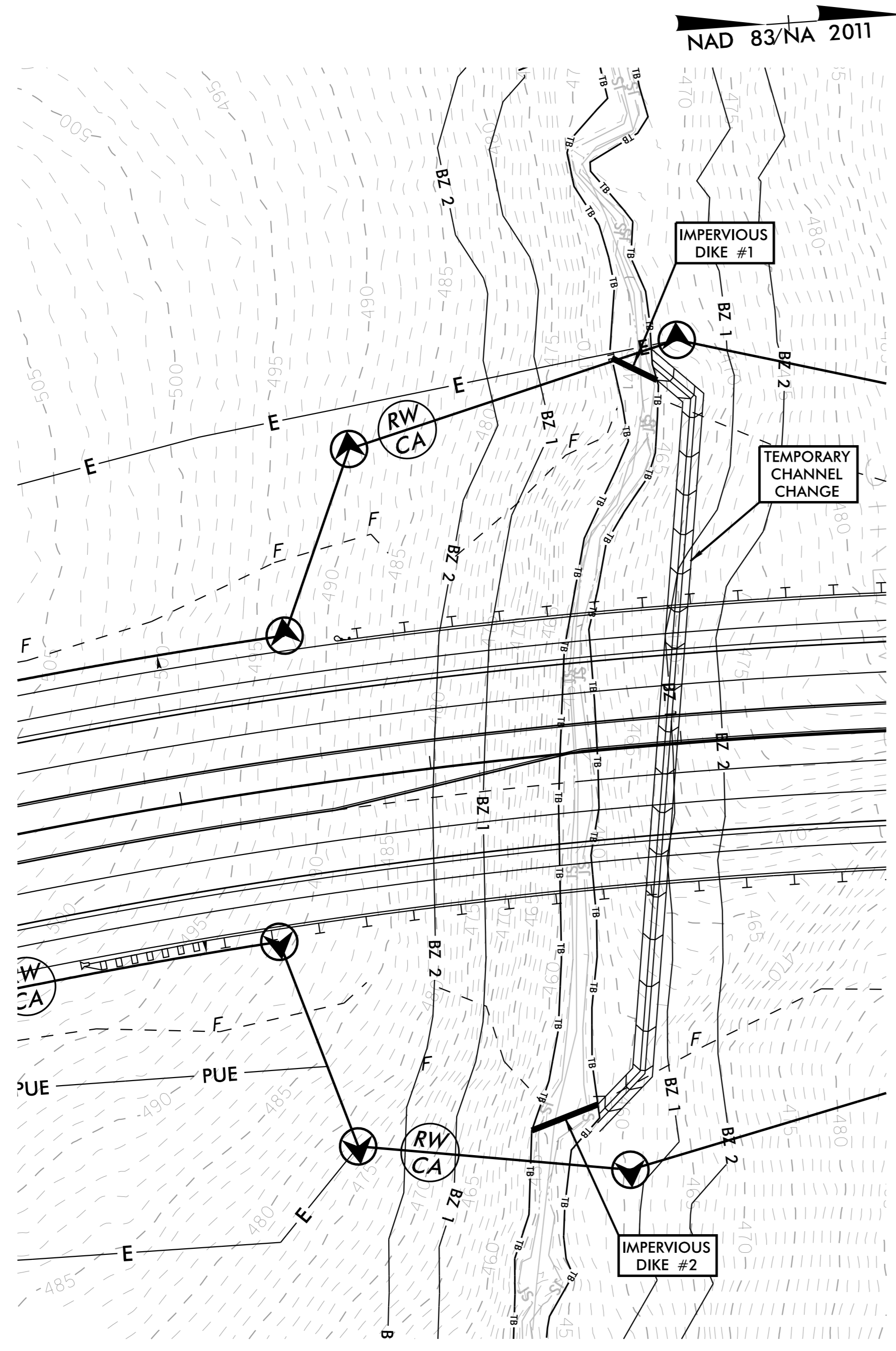
- 1.) UTILIZE SPECIAL STILLING BASIN(S) DURING CONSTRUCTION AS NEEDED TO DEWATER WORK SITE. (TYP.)
- 2.) CONSTRUCT TEMPORARY CHANNEL CHANGE WITH LINER (2 FT BASE, 1.5 FT DEEP, 2:1 SIDE SLOPES).
- 3.) CONSTRUCT IMPERVIOUS DIKES 1 AND 2 DIVERTING FLOW THROUGH TEMPORARY CHANNEL CHANGE.

## PHASE II

- 1.) CONSTRUCT PROPOSED 1 @ 7' X 7' RCBC, 1' BURIED.
- 2.) ADJUST TEMPORARY CHANNEL CHANGE AS NECESSARY TO MAKE UPSTREAM AND DOWNSTREAM CHANNEL IMPROVEMENTS WITHIN EASEMENTS AND PLACE REQUIRED RIPRAP AND MATTING ON CHANNEL BANKS.

## PHASE III

- 1.) REMOVE IMPERVIOUS DIKE 1 AND 2 AND REMOVE TEMPORARY CHANNEL CHANGE.
- 2.) REMOVE SPECIAL STILLING BASIN.
- 3.) STABILIZE DISTURBED AREA AND REMOVE ALL EROSION AND SEDIMENT CONTROL DEVICES AS DIRECTED.
- 4.) FINISH ROADWAY AND DRAINAGE CONSTRUCTION.



5/12/2023