

Location and Surveys

NIV5

NIV5 ENGINEERS & CONSULTANTS, INC.
3300 REGENCY PARKWAY, SUITE 100
CARY, NC 27518
P: 919.851.1912 www.NIV5.com
NCE License # 4282 Formerly CAE's Engineers & Consultants

PROJECT SURVEYOR

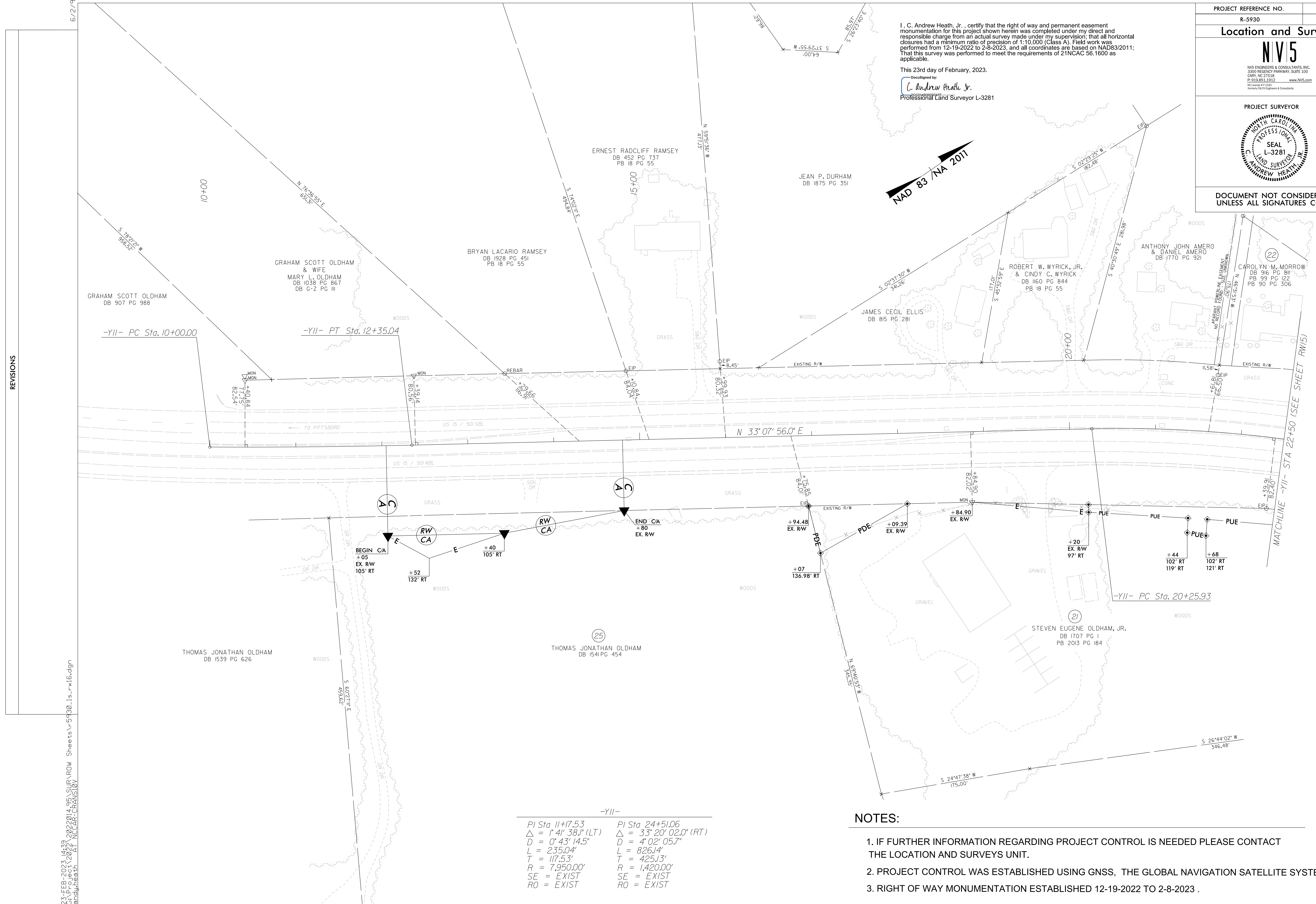
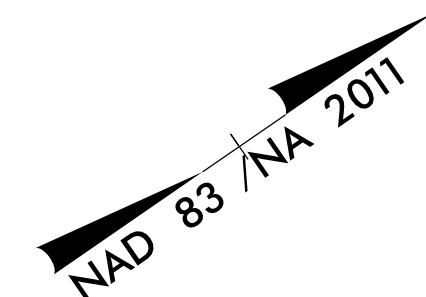


DOCUMENT NOT CONSIDERED FINAL UNLESS ALL SIGNATURES COMPLETED

I, C. Andrew Heath, Jr., certify that the right of way and permanent easement monumentation for this project shown herein was completed under my direct and responsible charge from an actual survey made under my supervision; that all horizontal closures had a minimum ratio of precision of 1:10,000 (Class A). Field work was performed from 12-19-2022 to 2-8-2023, and all coordinates are based on NAD83/2011; That this survey was performed to meet the requirements of 21NCAC 56.1600 as applicable.

This 23rd day of February, 2023.

DocuSigned by:
I. C. Andrew Heath, Jr.
Professional Land Surveyor L-3281



REVISIONS

23 FEB 2023 16:39 C:\3\FEB-2023\2022\014_95\SUR\RDW_Sheets\5930_1s_r.w16.dgn
I. C. Andrew Heath
NCCAR-CRANS10V

-YII-

PI Sta 11+17.53	PI Sta 24+51.06
$\Delta = 1' 41'' 38.1''$ (LT)	$\Delta = 33' 20'' 02.0''$ (RT)
$D = 0' 43'' 14.5''$	$D = 4' 02'' 05.7''$
$L = 235.04'$	$L = 826.14'$
$T = 117.53'$	$T = 425.13'$
$R = 7,950.00'$	$R = 1,420.00'$
SE = EXIST	SE = EXIST
RO = EXIST	RO = EXIST

NOTES:

1. IF FURTHER INFORMATION REGARDING PROJECT CONTROL IS NEEDED PLEASE CONTACT THE LOCATION AND SURVEYS UNIT.
2. PROJECT CONTROL WAS ESTABLISHED USING GNSS, THE GLOBAL NAVIGATION SATELLITE SYSTEM.
3. RIGHT OF WAY MONUMENTATION ESTABLISHED 12-19-2022 TO 2-8-2023 .