

Location and Surveys

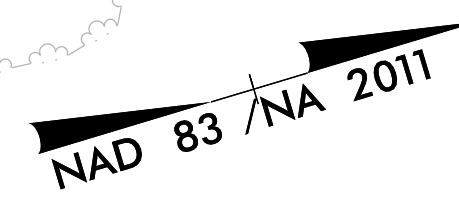
NV5

NVS ENGINEERS & CONSULTANTS, INC. 3300 REGENCY PARKWAY, SUITE 100 CARY, NC 27518 P: 919.851.1912 www.NV5.com

PROJECT SURVEYOR



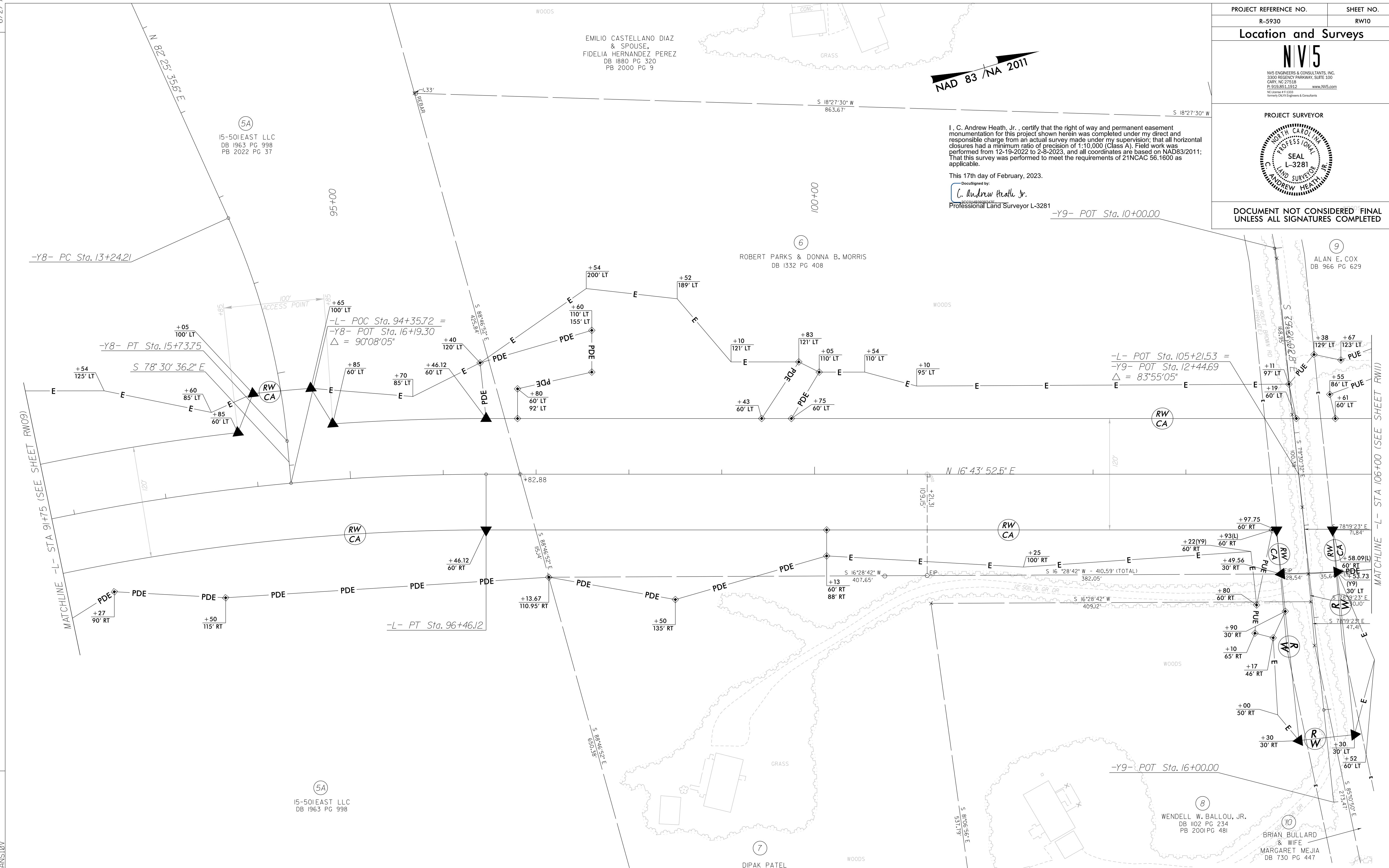
DOCUMENT NOT CONSIDERED FINAL UNLESS ALL SIGNATURES COMPLETED



I, C. Andrew Heath, Jr., certify that the right of way and permanent easement monumentation for this project shown herein was completed under my direct and responsible charge from an actual survey made under my supervision; that all horizontal closures had a minimum ratio of precision of 1:10,000 (Class A). Field work was performed from 12-19-2022 to 2-8-2023, and all coordinates are based on NAD83/2011; That this survey was performed to meet the requirements of 21NCAC 56.1600 as applicable.

This 17th day of February, 2023.

DocuSigned by: C. Andrew Heath, Jr. Professional Land Surveyor L-3281



-L-	-Y8-
PI Sta 93+44.86	PI Sta 14+50.14
$\Delta = 15^{\circ} 05' 51.3" (RT)$	$\Delta = 19^{\circ} 03' 48.2" (RT)$
$D = 2^{\circ} 29' 28.0"$	$D = 7^{\circ} 38' 22.0"$
$L = 606.06'$	$L = 249.54'$
$T = 304.79'$	$T = 125.93'$
$R = 2,300.00'$	$R = 750.00'$
$SE = 0.03$	
$RO = 144$	

- NOTES:
1. IF FURTHER INFORMATION REGARDING PROJECT CONTROL IS NEEDED PLEASE CONTACT THE LOCATION AND SURVEYS UNIT.
  2. PROJECT CONTROL WAS ESTABLISHED USING GNSS, THE GLOBAL NAVIGATION SATELLITE SYSTEM.
  3. RIGHT OF WAY MONUMENTATION ESTABLISHED 12-19-2022 TO 2-8-2023 .

REVISIONS

CV, FEB-2023, 11:23 2022/014\_9F\SUR\RDW Sheets V-5930\_1.s\_r.w.10.dgn  
C:\FEB-2023\11:23 2022\014\_9F\SUR\RDW Sheets V-5930\_1.s\_r.w.10.dgn  
NCCAR-CRANSTON

MATCHLINE -L- STA 91+75 (SEE SHEET RW09)

MATCHLINE -L- STA 106+00 (SEE SHEET RW11)

-Y8- PC Sta. 13+24.21

-Y8- PT Sta. 15+73.75

-L- POC Sta. 94+35.72 =  
-Y8- POT Sta. 16+19.30  
 $\Delta = 90^{\circ} 08' 05"$

-L- POT Sta. 105+21.53 =  
-Y9- POT Sta. 12+44.69  
 $\Delta = 83^{\circ} 55' 05"$

-L- PT Sta. 96+46.12

-Y9- L.POT Sta. 16+00.00

5A  
15-501EAST LLC  
DB 1963 PG 998  
PB 2022 PG 37

5A  
15-501EAST LLC  
DB 1963 PG 998

EMILIO CASTELLANO DIAZ  
& SPOUSE,  
FIDELIA HERNANDEZ PEREZ  
DB 1880 PG 320  
PB 2000 PG 9

6  
ROBERT PARKS & DONNA B. MORRIS  
DB 1332 PG 408

7  
DIPAK PATEL  
AND WIFE,  
BIJAL PATEL  
DB 2258 PG 1080  
PB 2001 PG 481

9  
ALAN E. COX  
DB 966 PG 629

8  
WENDELL W. BALLOU, JR.  
DB 1102 PG 234  
PB 2001 PG 481

10  
BRIAN BULLARD  
& WIFE  
MARGARET MEJIA  
DB 730 PG 447