

Location and Surveys

NV5

NVS ENGINEERS & CONSULTANTS, INC.
3300 REGENCY PARKWAY, SUITE 100
CARY, NC 27518
P: 919.851.1912 www.NV5.com
NC License # 4389
Formerly C.A.V. Engineers & Consultants

PROJECT SURVEYOR

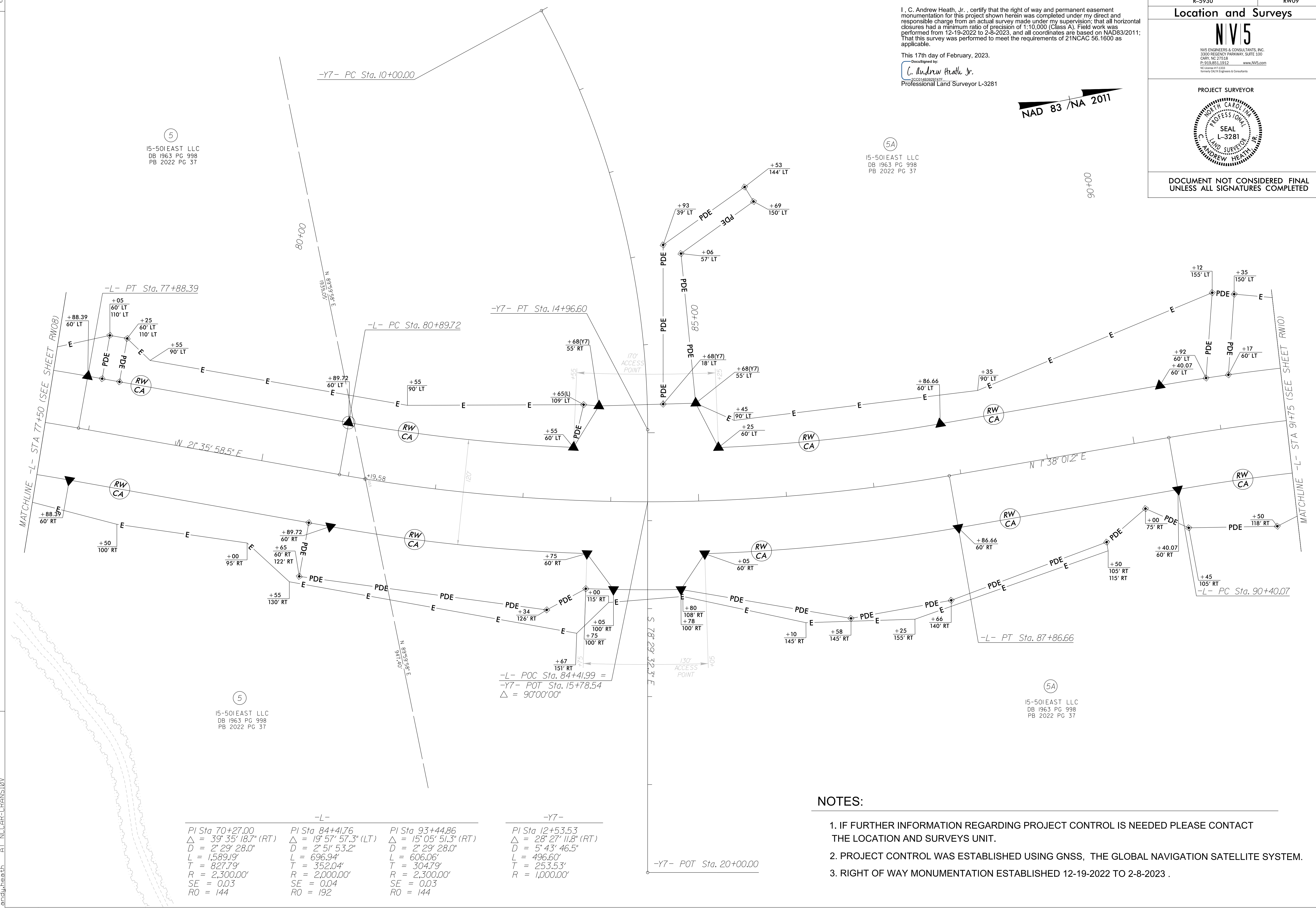
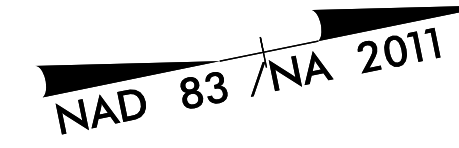


DOCUMENT NOT CONSIDERED FINAL UNLESS ALL SIGNATURES COMPLETED

I, C. Andrew Heath, Jr., certify that the right of way and permanent easement monumentation for this project shown herein was completed under my direct and responsible charge from an actual survey made under my supervision; that all horizontal closures had a minimum ratio of precision of 1:10,000 (Class A). Field work was performed from 12-19-2022 to 2-8-2023, and all coordinates are based on NAD83/2011; That this survey was performed to meet the requirements of 21NCAC 56.1600 as applicable.

This 17th day of February, 2023.

C. Andrew Heath Jr.
Professional Land Surveyor L-3281



REVISIONS

5
15-501EAST LLC
DB 1963 PG 998
PB 2022 PG 37

5A
15-501EAST LLC
DB 1963 PG 998
PB 2022 PG 37

5
15-501EAST LLC
DB 1963 PG 998
PB 2022 PG 37

5A
15-501EAST LLC
DB 1963 PG 998
PB 2022 PG 37

-L-			-Y7-		
PI Sta 70+27.00	PI Sta 84+41.76	PI Sta 93+44.86	PI Sta 12+53.53		
$\Delta = 39^\circ 35' 18.7''$ (RT)	$\Delta = 19^\circ 57' 57.3''$ (LT)	$\Delta = 15^\circ 05' 51.3''$ (RT)	$\Delta = 28^\circ 27' 11.8''$ (RT)		
D = 2' 29' 28.0"	D = 2' 51' 53.2"	D = 2' 29' 28.0"	D = 5' 43' 46.5"		
L = 1,589.19'	L = 696.94'	L = 606.06'	L = 496.60'		
T = 827.79'	T = 352.04'	T = 304.79'	T = 253.53'		
R = 2,300.00'	R = 2,000.00'	R = 2,300.00'	R = 1,000.00'		
SE = 0.03	SE = 0.04	SE = 0.03			
RO = 144	RO = 192	RO = 144			

NOTES:

1. IF FURTHER INFORMATION REGARDING PROJECT CONTROL IS NEEDED PLEASE CONTACT THE LOCATION AND SURVEYS UNIT.
2. PROJECT CONTROL WAS ESTABLISHED USING GNSS, THE GLOBAL NAVIGATION SATELLITE SYSTEM.
3. RIGHT OF WAY MONUMENTATION ESTABLISHED 12-19-2022 TO 2-8-2023 .

17-FEB-2023 18:14
C:\FES\proj\2022\2022014_9F\SUR\ROW_Sheets\5930_1s.rw09.dgn
AT NCCAR-CRANSTON
andy.heath