

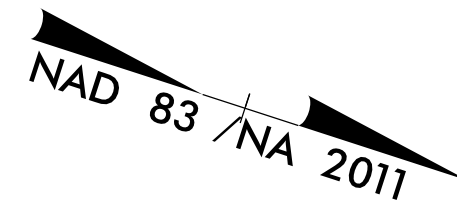


PROJECT REFERENCE NO.	SHEET NO.
R-5930	RW07
Location and Surveys	
 NIV5 <small>NIV5 ENGINEERS & CONSULTANTS, INC. 3300 REGENCY PARKWAY, SUITE 100 CARY, NC 27518 P: 919.851.1912 www.NIV5.com NC License # 13281 Formerly CA/VA Engineers & Consultants</small>	
PROJECT SURVEYOR	
 SEAL L-3281 LAND SURVEYOR C. ANDREW HEATH, JR.	
DOCUMENT NOT CONSIDERED FINAL UNLESS ALL SIGNATURES COMPLETED	

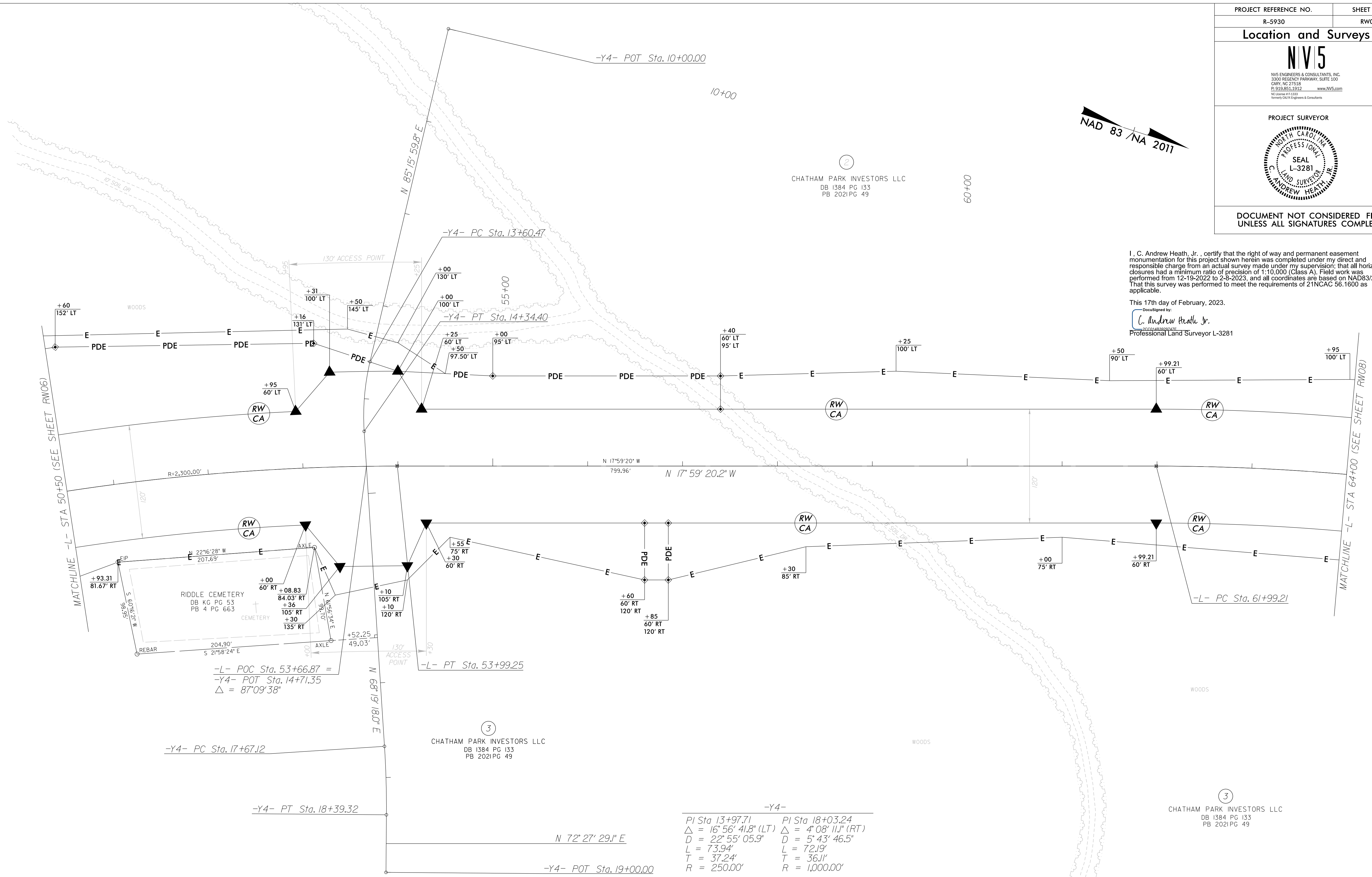


I, C. Andrew Heath, Jr., certify that the right of way and permanent easement monumentation for this project shown herein was completed under my direct and responsible charge from an actual survey made under my supervision; that all horizontal closures had a minimum ratio of precision of 1:10,000 (Class A). Field work was performed from 12-19-2022 to 2-8-2023, and all coordinates are based on NAD83/2011; That this survey was performed to meet the requirements of 21NCAC 56.1600 as applicable.

This 17th day of February, 2023.
 Decided by:

 C. Andrew Heath, Jr.
 Professional Land Surveyor L-3281

REVISIONS



-Y4-	
PI Sta 13+97.71	PI Sta 18+03.24
Δ = 16' 56' 41.8" (LT)	Δ = 4' 08' 11.1" (RT)
D = 22' 55' 05.9"	D = 5' 43' 46.5"
L = 73.94'	L = 72.19'
T = 37.24'	T = 36.11'
R = 250.00'	R = 1,000.00'

-L-	
PI Sta 51+17.00	PI Sta 70+27.00
Δ = 14' 08' 03.1" (RT)	Δ = 39' 35' 18.7" (RT)
D = 2' 29' 28.0"	D = 2' 29' 28.0"
L = 567.38'	L = 1,589.19'
T = 285.14'	T = 827.79'
R = 2,300.00'	R = 2,300.00'
SE = 0.03	SE = 0.03
RO = 144	RO = 144

NOTES:

1. IF FURTHER INFORMATION REGARDING PROJECT CONTROL IS NEEDED PLEASE CONTACT THE LOCATION AND SURVEYS UNIT.
2. PROJECT CONTROL WAS ESTABLISHED USING GNSS, THE GLOBAL NAVIGATION SATELLITE SYSTEM.
3. RIGHT OF WAY MONUMENTATION ESTABLISHED 12-19-2022 TO 2-8-2023 .

17-FEB-2023 10:14
 C:\FEB_2023\1022\2022\014_95\SUR\ROW_Sheets\5930_1s_rw07.dgn
 AT NCCAR-CRANSTON
 andy.heath