

Location and Surveys

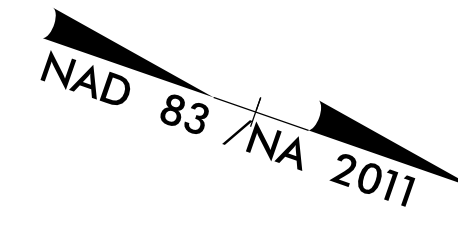
NV5

NVS ENGINEERS & CONSULTANTS, INC.
3300 REGENCY PARKWAY, SUITE 100
CARY, NC 27518
P: 919.851.1912 www.NV5.com
NC License # 1339 Formerly CA/N Engineers & Consultants

PROJECT SURVEYOR



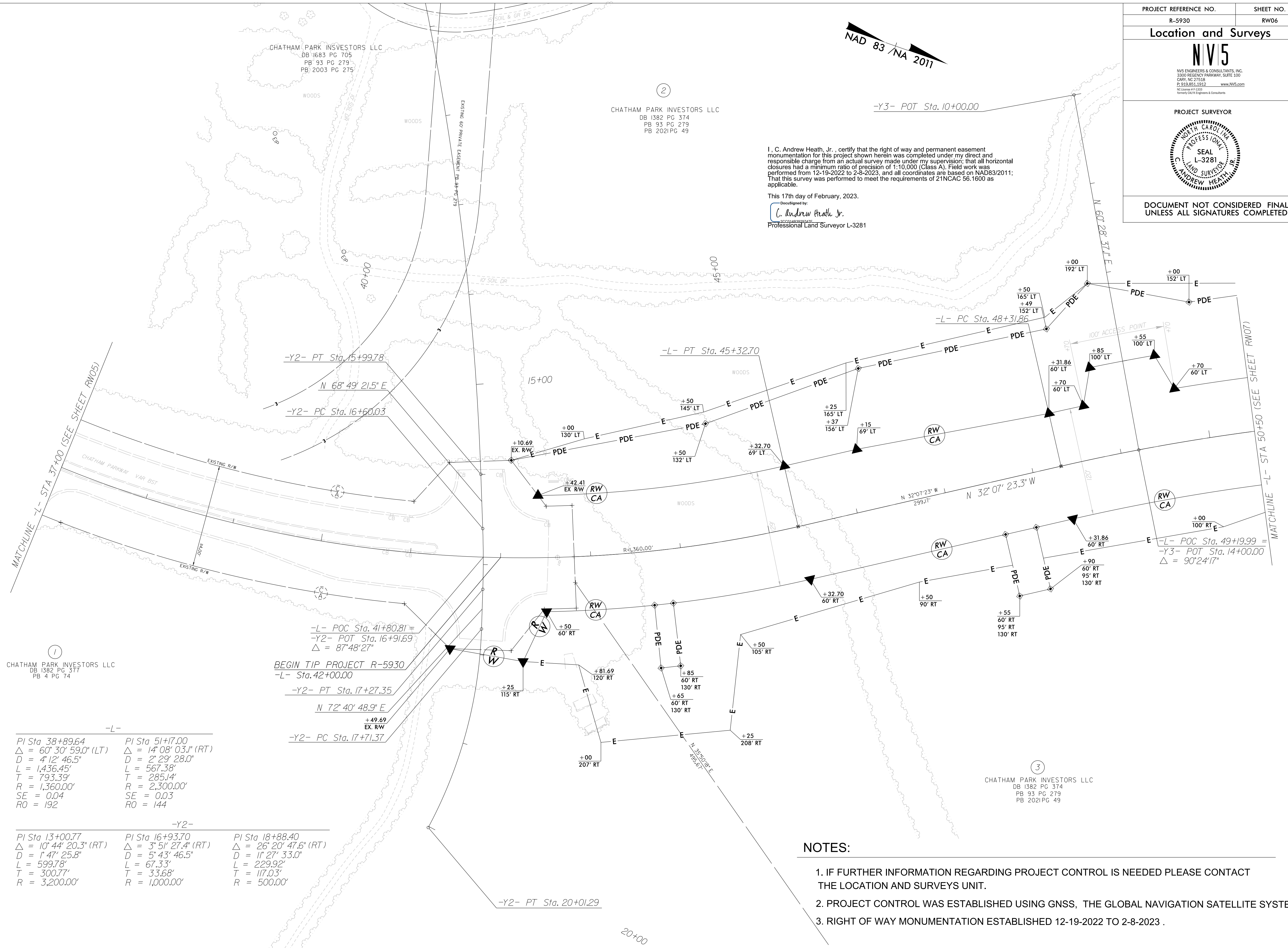
DOCUMENT NOT CONSIDERED FINAL UNLESS ALL SIGNATURES COMPLETED



CHATHAM PARK INVESTORS LLC
DB 1382 PG 374
PB 93 PG 279
PB 2021 PG 49

I, C. Andrew Heath, Jr., certify that the right of way and permanent easement monumentation for this project shown herein was completed under my direct and responsible charge from an actual survey made under my supervision; that all horizontal closures had a minimum ratio of precision of 1:10,000 (Class A). Field work was performed from 12-19-2022 to 2-8-2023, and all coordinates are based on NAD83/2011; That this survey was performed to meet the requirements of 21NCAC 56.1600 as applicable.

This 17th day of February, 2023.
DocuSigned by:
C. Andrew Heath, Jr.
2023.02.18 10:29:17Z
Professional Land Surveyor L-3281



REVISIONS

CHATHAM PARK INVESTORS LLC
DB 1382 PG 377
PB 4 PG 74

CHATHAM PARK INVESTORS LLC
DB 1382 PG 374
PB 93 PG 279
PB 2021 PG 49

-L-
 PI Sta 38+89.64 PI Sta 51+17.00
 $\Delta = 60' 30'' 59.0''$ (LT) $\Delta = 14' 08'' 03.1''$ (RT)
 D = 4' 12' 46.5" D = 2' 29' 28.0"
 L = 1,436.45' L = 567.38'
 T = 793.39' T = 285.14'
 R = 1,360.00' R = 2,300.00'
 SE = 0.04 SE = 0.03
 RO = 192 RO = 144

-Y2-
 PI Sta 13+00.77 PI Sta 16+93.70 PI Sta 18+88.40
 $\Delta = 10' 44'' 20.3''$ (RT) $\Delta = 3' 51'' 27.4''$ (RT) $\Delta = 26' 20'' 47.6''$ (RT)
 D = 1' 47' 25.8" D = 5' 43' 46.5" D = 11' 27' 33.0"
 L = 599.78' L = 67.33' L = 229.92'
 T = 300.77' T = 33.68' T = 117.03'
 R = 3,200.00' R = 1,000.00' R = 500.00'

NOTES:

1. IF FURTHER INFORMATION REGARDING PROJECT CONTROL IS NEEDED PLEASE CONTACT THE LOCATION AND SURVEYS UNIT.
2. PROJECT CONTROL WAS ESTABLISHED USING GNSS, THE GLOBAL NAVIGATION SATELLITE SYSTEM.
3. RIGHT OF WAY MONUMENTATION ESTABLISHED 12-19-2022 TO 2-8-2023 .

17-FEB-2023 10:44:22 2022014.95\SUR\ROW Sheets\5930_1.s_r.w06.dgn
C:\Users\andrewh\OneDrive\Documents\Projects\5930\17-FEB-2023 10:44:22 2022014.95\SUR\ROW Sheets\5930_1.s_r.w06.dgn
C:\Users\andrewh\OneDrive\Documents\Projects\5930\17-FEB-2023 10:44:22 2022014.95\SUR\ROW Sheets\5930_1.s_r.w06.dgn