

Location and Surveys

NV5

NVS ENGINEERS & CONSULTANTS, INC.
3300 RESEDA PARKWAY, SUITE 100
CARY, NC 27518
P: 919.851.1912 www.NV5.com
NC License # 3239 Formerly C&H Engineers & Consultants

PROJECT SURVEYOR

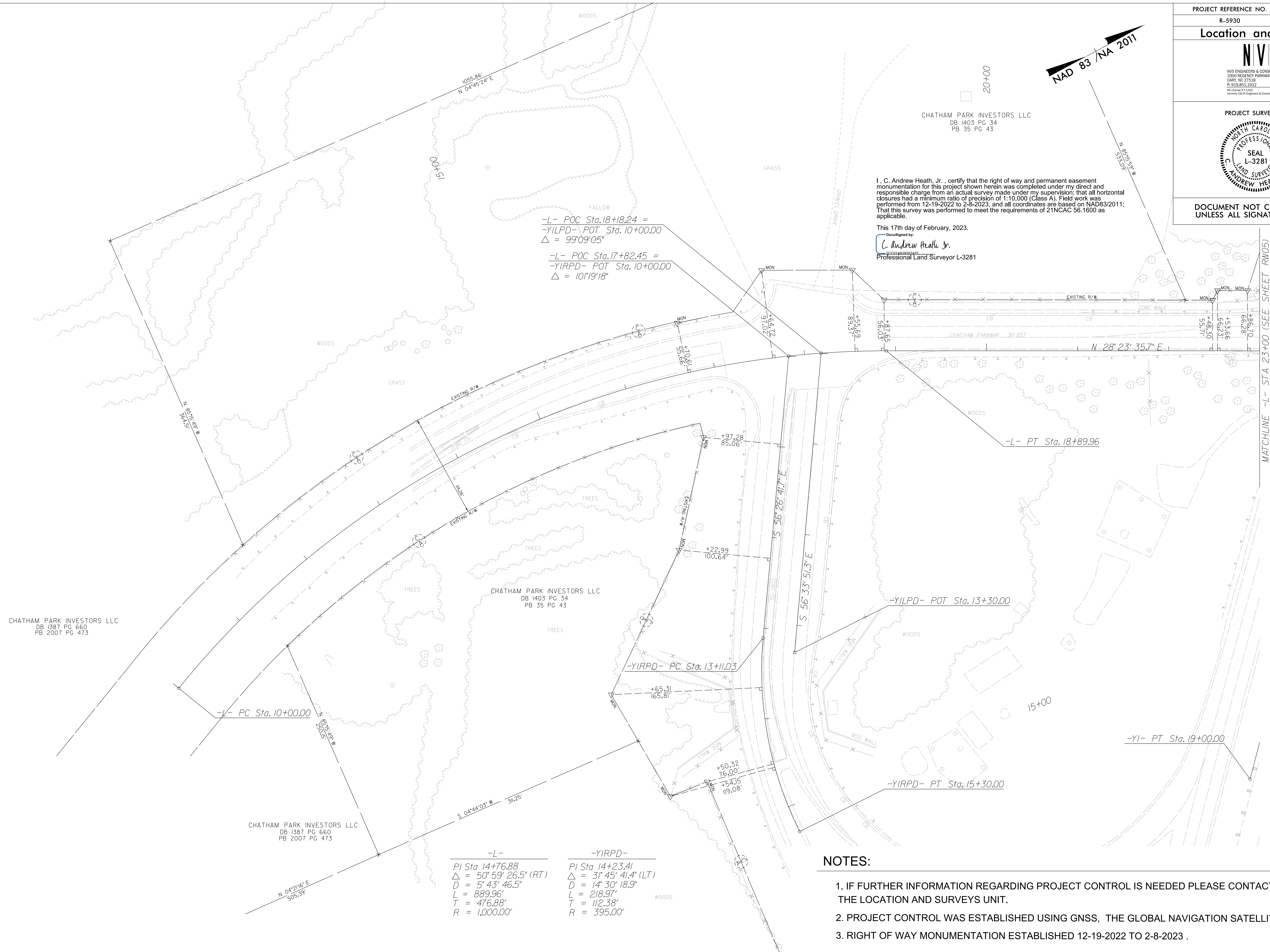
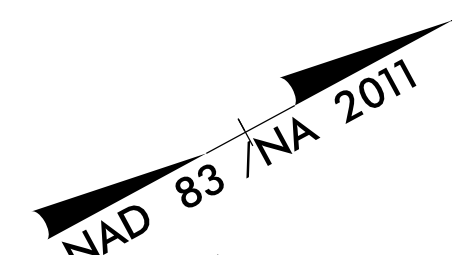


DOCUMENT NOT CONSIDERED FINAL
UNLESS ALL SIGNATURES COMPLETED

I, C. Andrew Heath, Jr., certify that the right of way and permanent easement monumentation for this project shown herein was completed under my direct and responsible charge from an actual survey made under my supervision; that all horizontal closures had a minimum ratio of precision of 1:10,000 (Class A). Field work was performed from 12-19-2022 to 2-8-2023, and all coordinates are based on NAD83/2011; That this survey was performed to meet the requirements of 21NCAC 56.1600 as applicable.

This 17th day of February, 2023.

Designed by
C. Andrew Heath, Jr.
Professional Land Surveyor L-3281



-L- POC Sta. 18+18.24 =
-YILPD- POT Sta. 10+00.00
Δ = 99°09'05"

-L- POC Sta. 17+82.45 =
-YIRPD- POT Sta. 10+00.00
Δ = 10°19'18"

-L-
PI Sta 14+76.88
Δ = 50° 59' 26.5" (RT)
D = 5' 43' 46.5"
L = 889.96'
T = 476.88'
R = 1,000.00'

-YIRPD-
PI Sta 14+23.41
Δ = 31° 45' 41.4" (LT)
D = 14' 30' 18.9"
L = 218.97'
T = 112.38'
R = 395.00'

NOTES:

- 1. IF FURTHER INFORMATION REGARDING PROJECT CONTROL IS NEEDED PLEASE CONTACT THE LOCATION AND SURVEYS UNIT.
- 2. PROJECT CONTROL WAS ESTABLISHED USING GNSS, THE GLOBAL NAVIGATION SATELLITE SYSTEM.
- 3. RIGHT OF WAY MONUMENTATION ESTABLISHED 12-19-2022 TO 2-8-2023 .

REVISIONS

17-FEB-2023 14:10
C:\F\03\loc\2022\2022014_95\SUR\RDW Sheets\5930_1s.rw04.dgn
AT NCCAR-CRANSTON
andy.heath

MATCHLINE -L- STA 23+00 (SEE SHEET RW05)