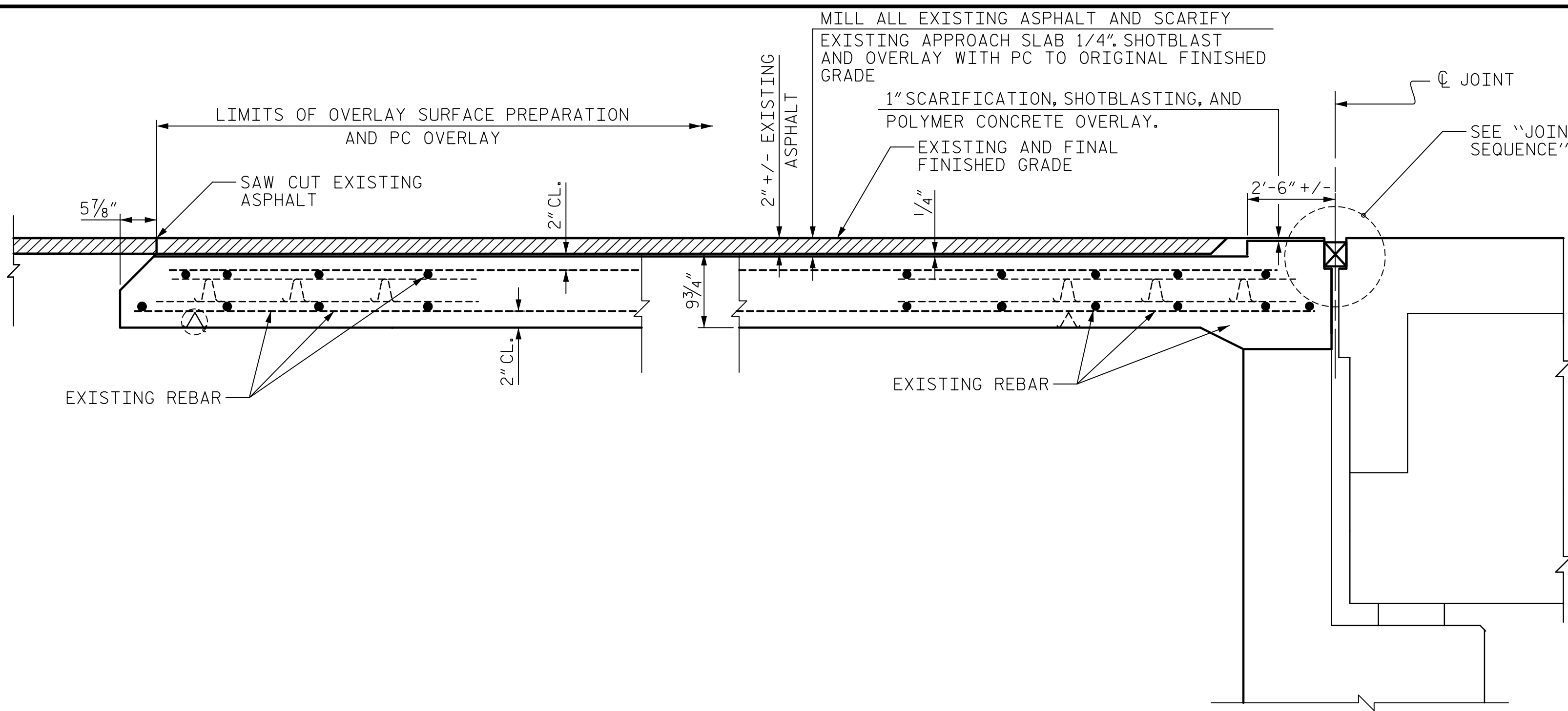
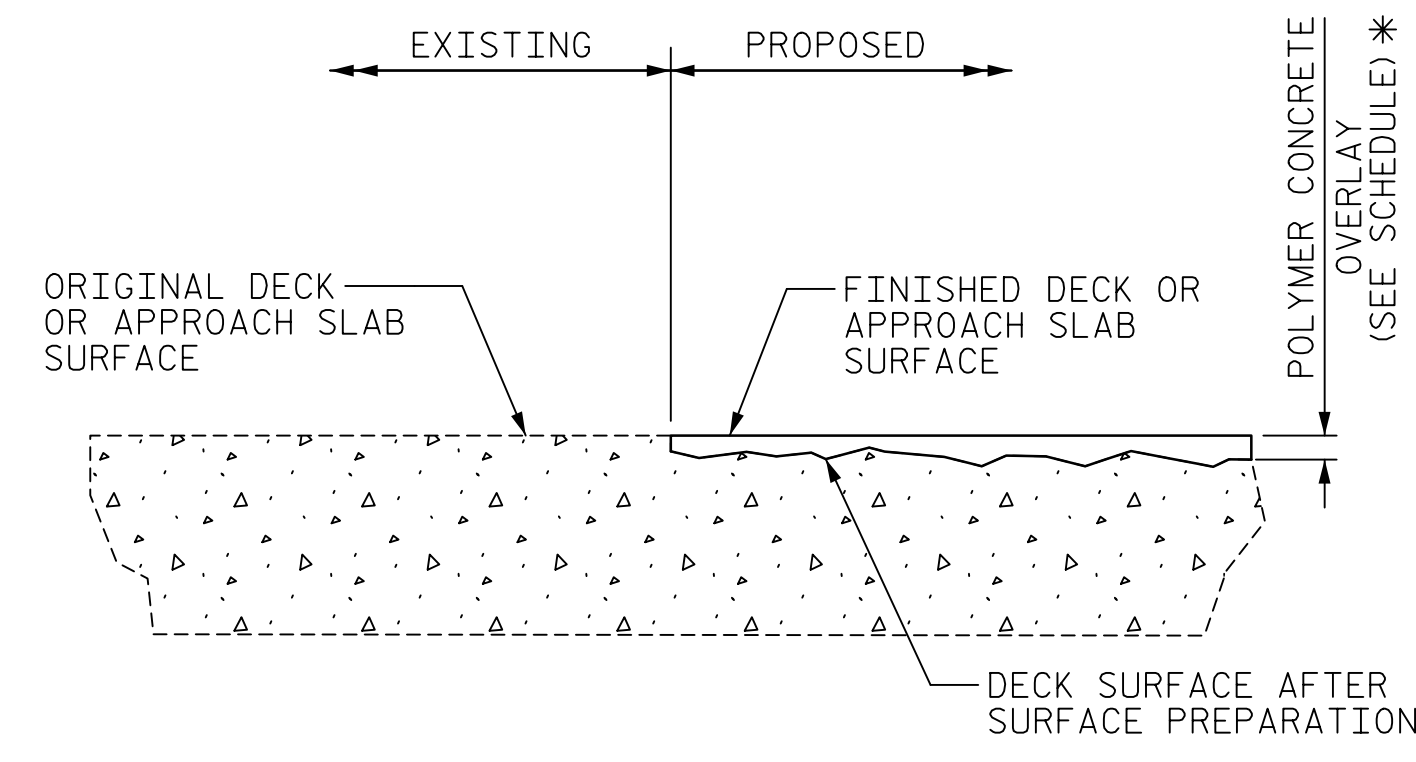


DATE: 2/10/2023
TIME: 10:28 PM

USER: cater, pw\cater@aec.com DS21_ML_2020\Documents\60609754-U-5748 Ugon MIT900-CAD GIS\910_CAD\70_MCDOT_TIP\Structures\04 Drawings\402_109-U-5748_SMLT_SDP_S2-54_91031



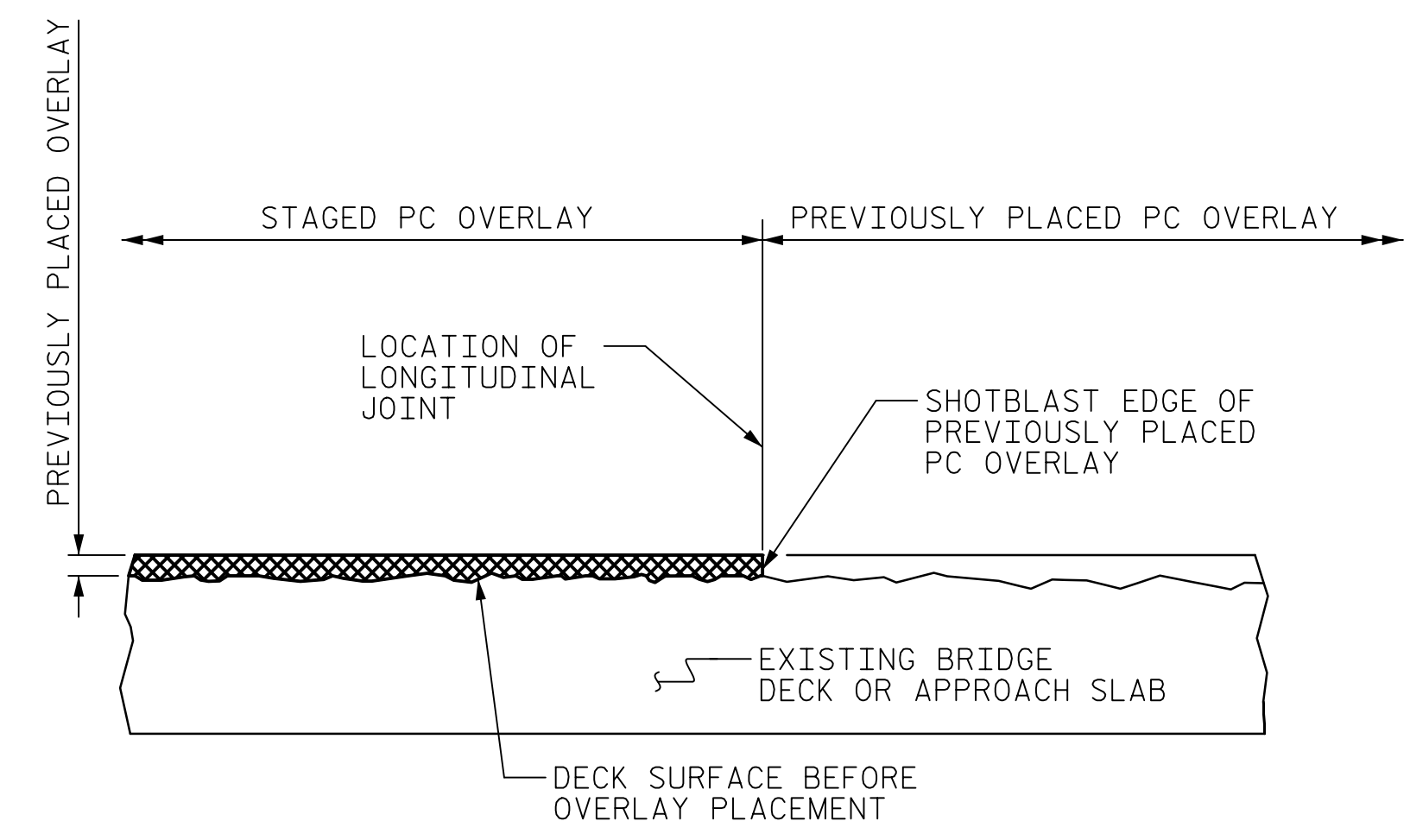
SECTION THRU EXISTING APPROACH SLAB



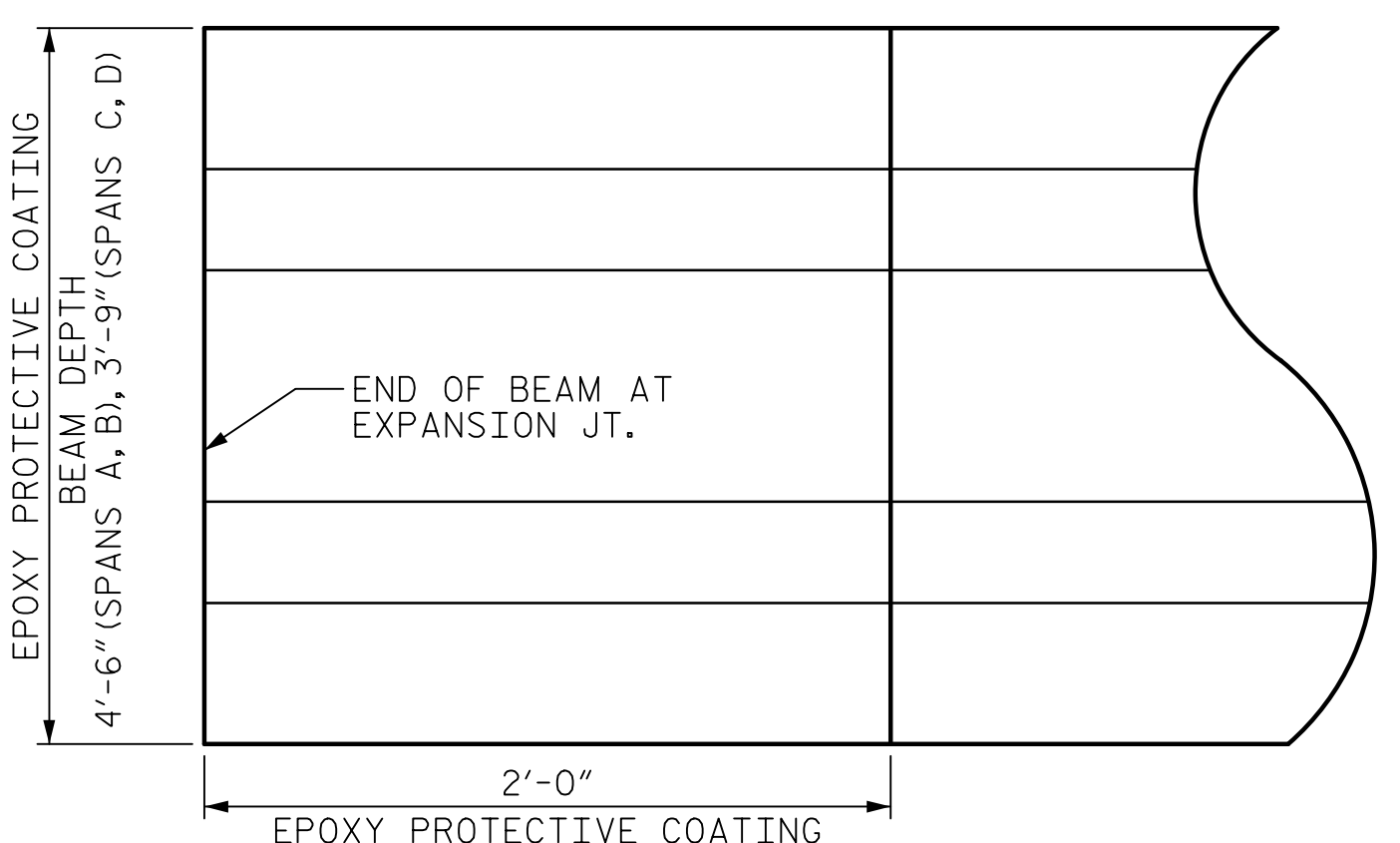
DETAIL FOR POLYMER CONCRETE OVERLAY
* POLYMER CONCRETE OVERLAY SCHEDULE

ON EXISTING AND PROPOSED BRIDGE DECK, EXISTING APPROACH SLAB WITH EXPOSED CONCRETE, AND PROPOSED APPROACH SLAB:
1" REMOVAL AND OVERLAY.

ON EXISTING APPROACH SLAB WITH EXISTING ASPHALT OVERLAY:
2 1/4" +/- REMOVAL AND OVERLAY



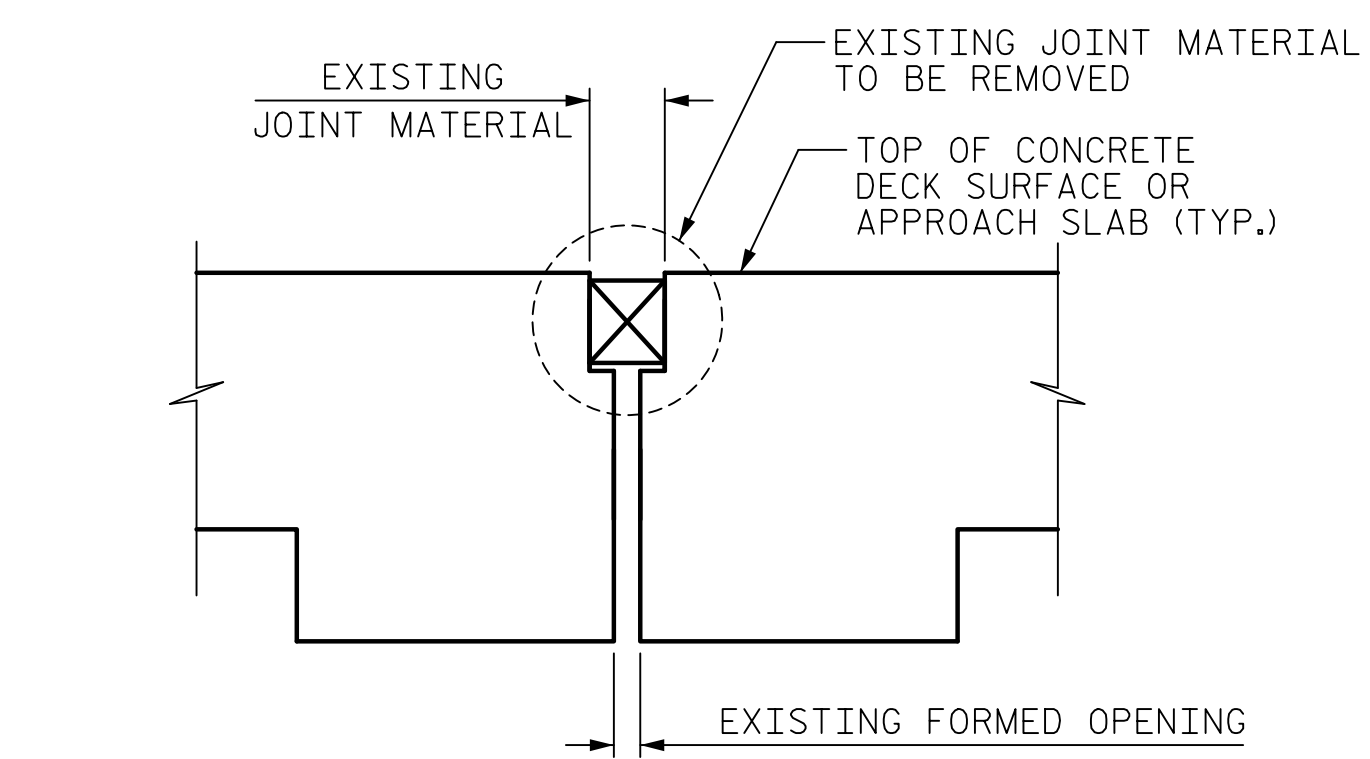
STAGED PC OVERLAY JOINT (AS NEEDED)



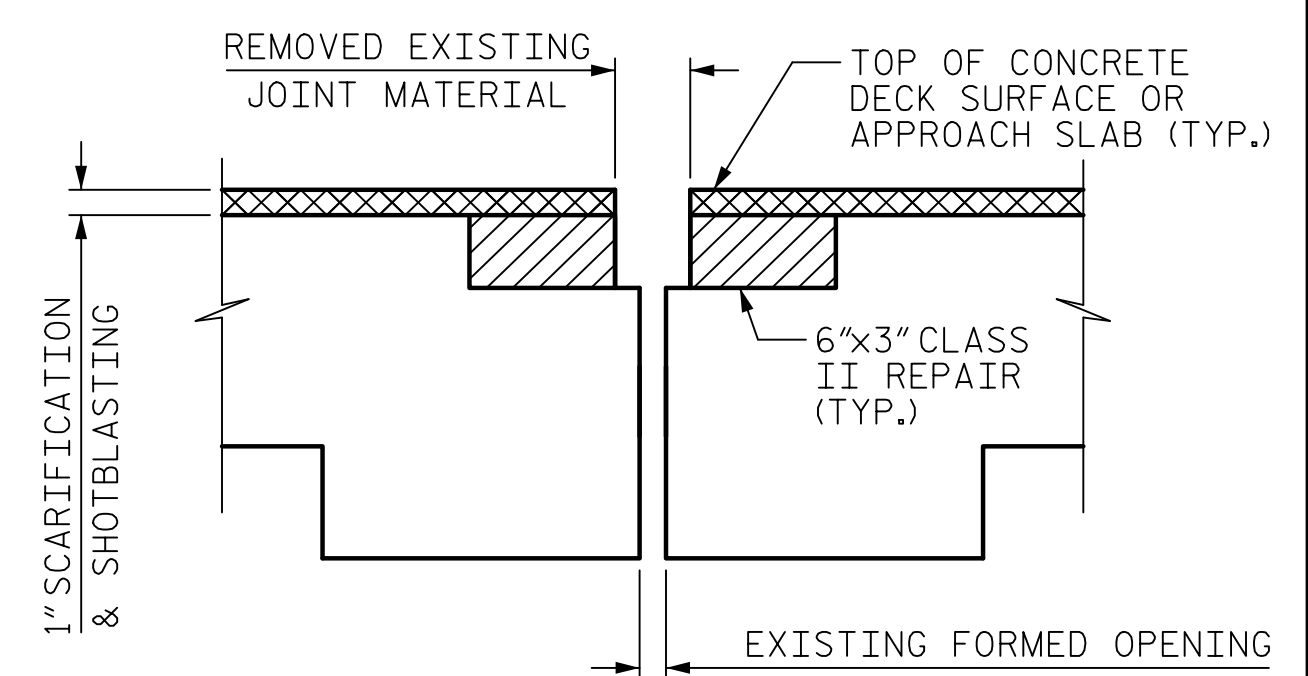
EPOXY-COAT EXISTING BEAM ENDS (END FACE, BOTTOM, SIDES) AT END BENTS 1 AND 2 AND AT BENT 2. SEE SPECIAL PROVISIONS.

EST. QTY. "EPOXY COATING CONCRETE GIRDER ENDS" = 550SF

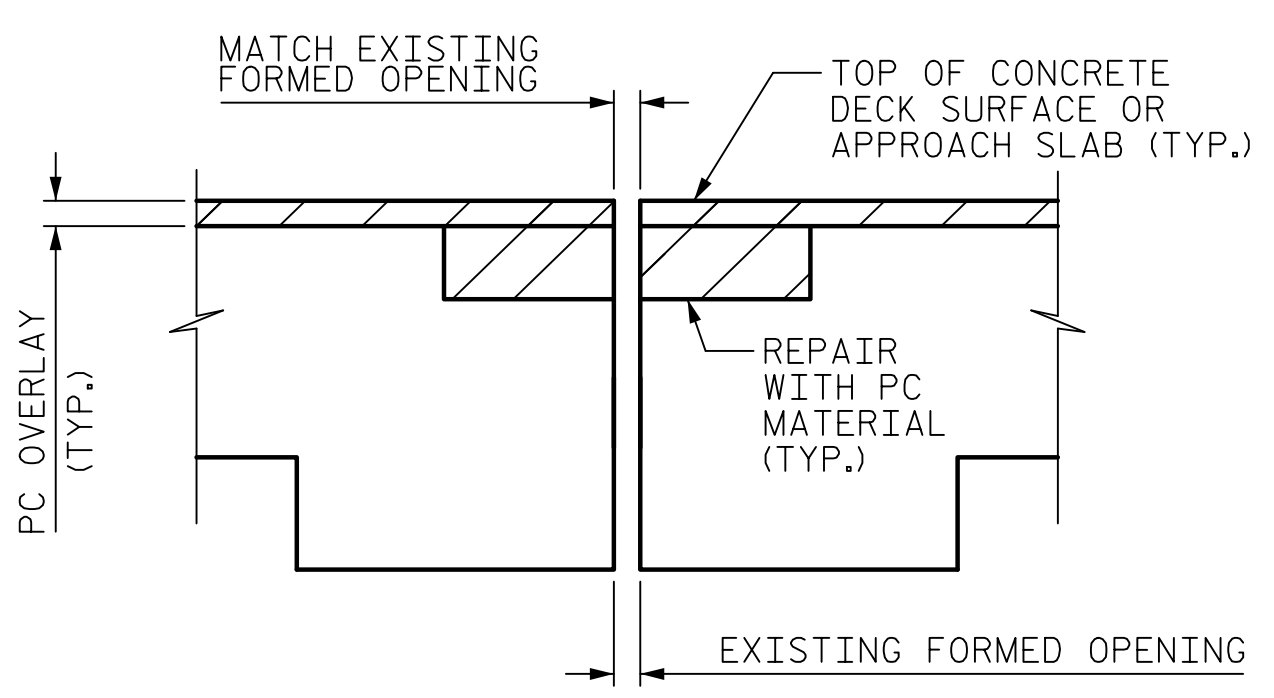
EPOXY COATING DETAIL



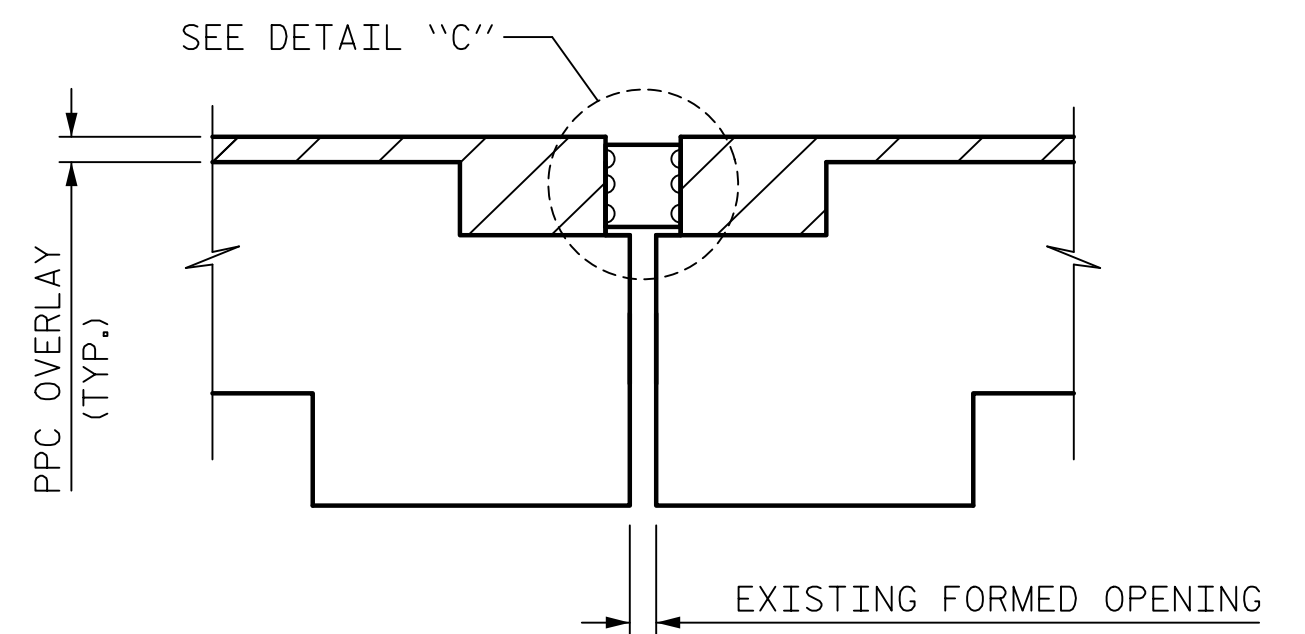
1. EXISTING



2. MINIMUM EXISTING JOINT DEMOLITION



3. PC JOINT REPAIR

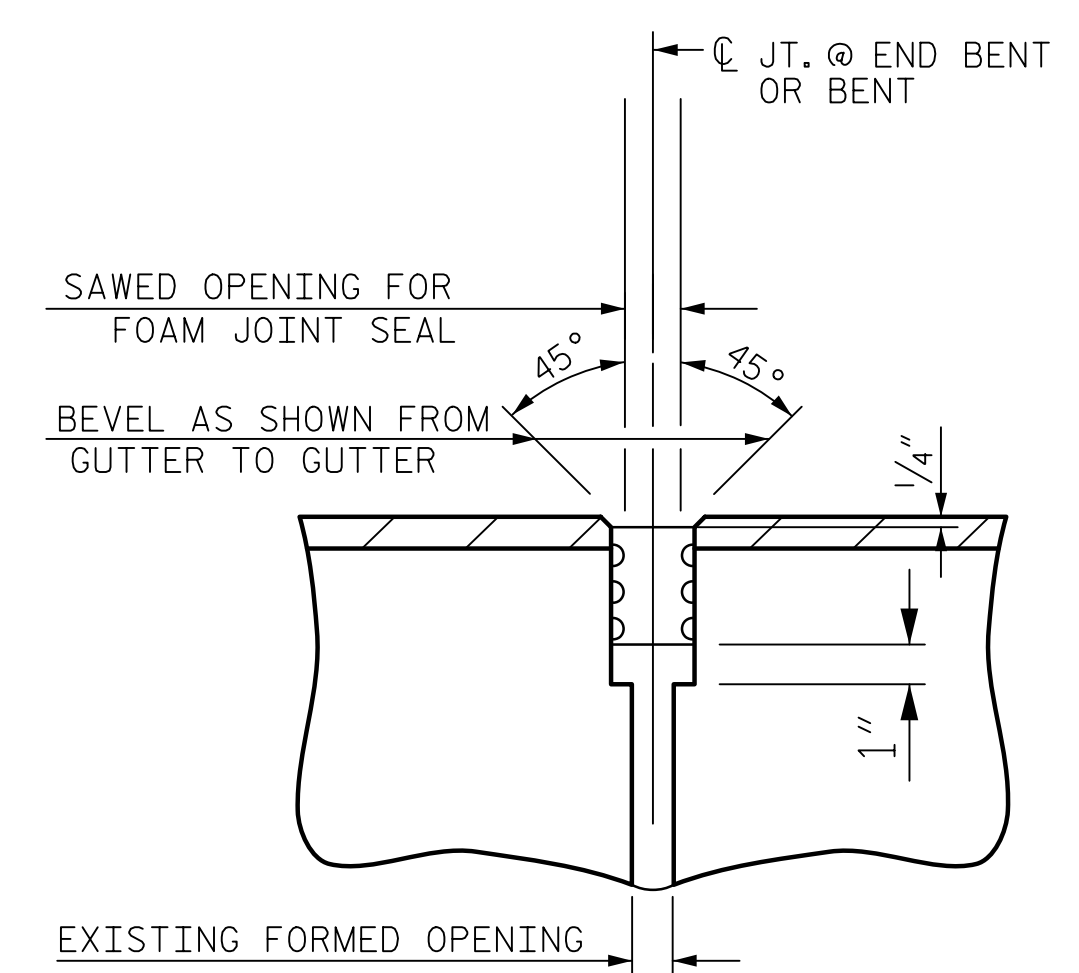


4. PROPOSED FOAM JOINT

FOAM JOINT SEAL SHALL BE INSTALLED IN EXISTING AND WIDENED PORTION AS PART OF A SINGLE OPERATION. SEE "FOAM JOINT SEAL DETAILS" SHEET AND TMP PLANS.

JOINT INSTALLATION SEQUENCE

FOR PPC OVERLAY THICKNESS, SEE "DETAIL FOR POLYMER CONCRETE OVERLAY"



DETAIL "C"

FOAM JOINT SEAL FOR SAWED OPENING WIDTH AT BENTS AND END BENTS, SEE "FOAM JOINT SEAL DETAILS" SHEET.

DOCUMENT NOT CONSIDERED FINAL UNLESS ALL SIGNATURES COMPLETED

PROJECT NO. U-5748
WAKE COUNTY
STATION: 24+88.00 -L-

SHEET 2 OF 2

AECOM
AECOM TECHNICAL SERVICES OF NC, INC.
5438 WADE PARK BOULEVARD, SUITE 200
RALEIGH, NC 27607
(919) 854-4200 www.aecom.com
AECOM License No. F-0342

NORTH CAROLINA PROFESSIONAL SEAL 041543 ENGINEER GREGORY R. COLLS

2/10/2023

STATE OF NORTH CAROLINA DEPARTMENT OF TRANSPORTATION RALEIGH					
PRESERVATION					
TYPICAL SECTION DETAILS (SOUTHBOUND)					
REVISIONS					
NO.	BY:	DATE:	NO.	BY:	DATE:
1			3		
2			4		
SHEET NO. S2-54					TOTAL SHEETS 119

DRAWN BY : M. CATER	DATE : 01/2021
CHECKED BY : G. COLS	DATE : 10/2022
DESIGNED BY : G. COLS	DATE : 10/2022
DESIGN CHECKED BY : J. SLOAN	DATE : 10/2022