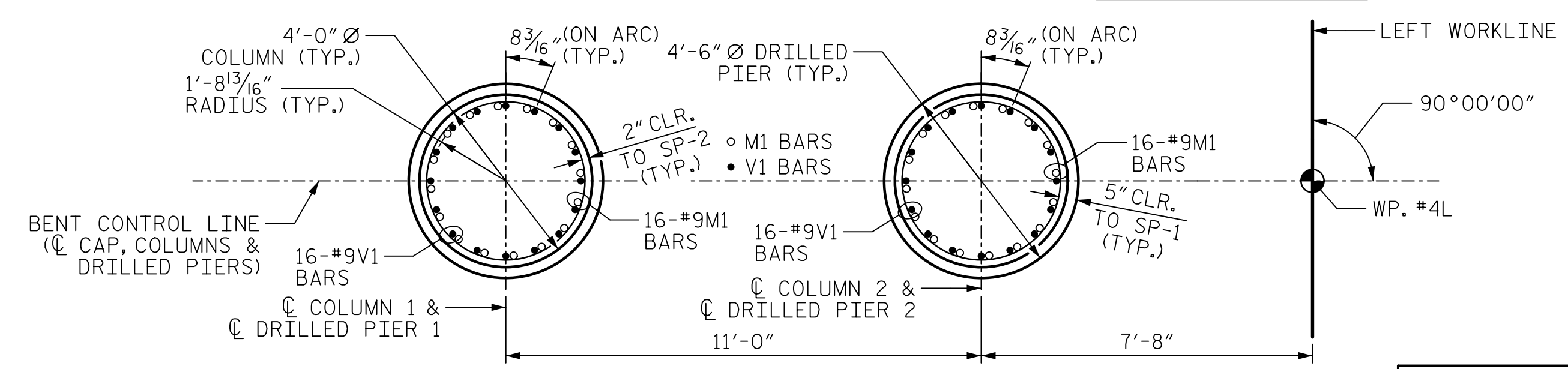
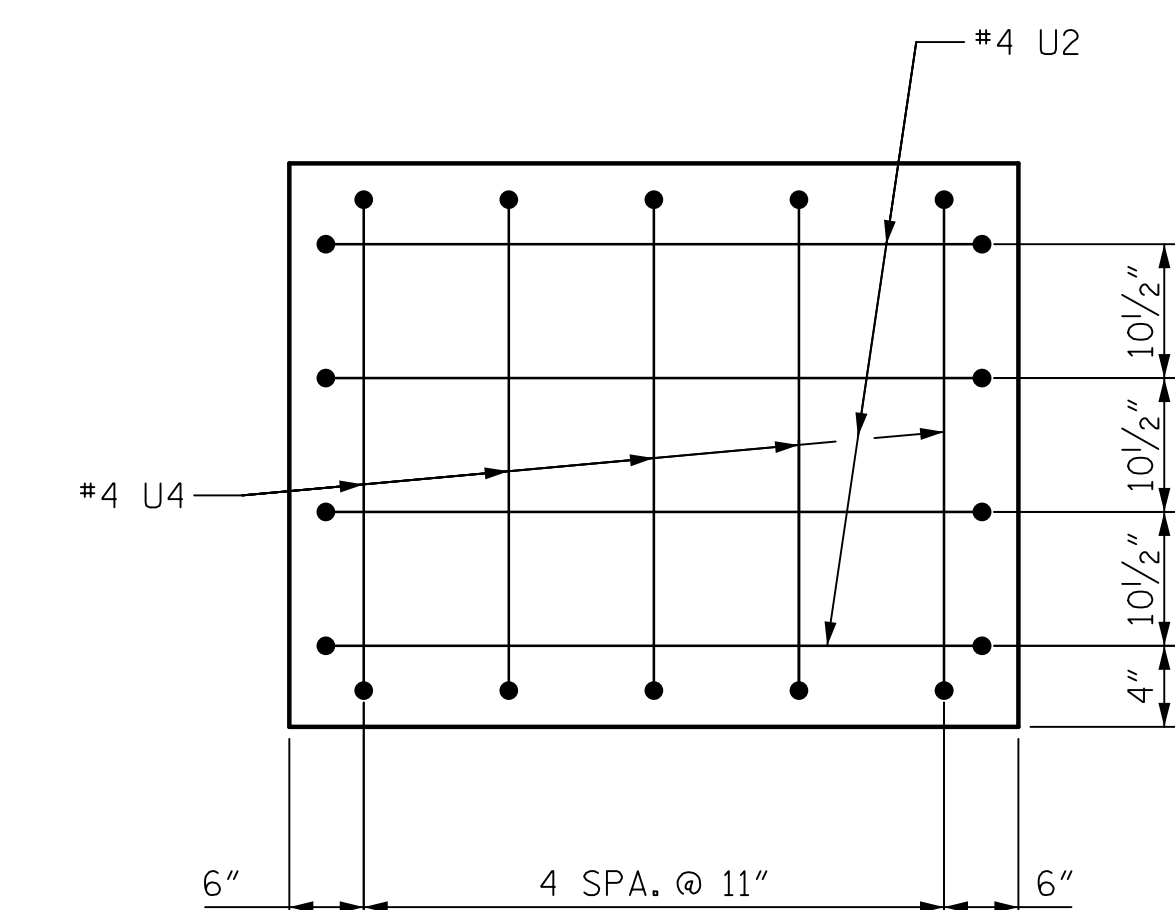
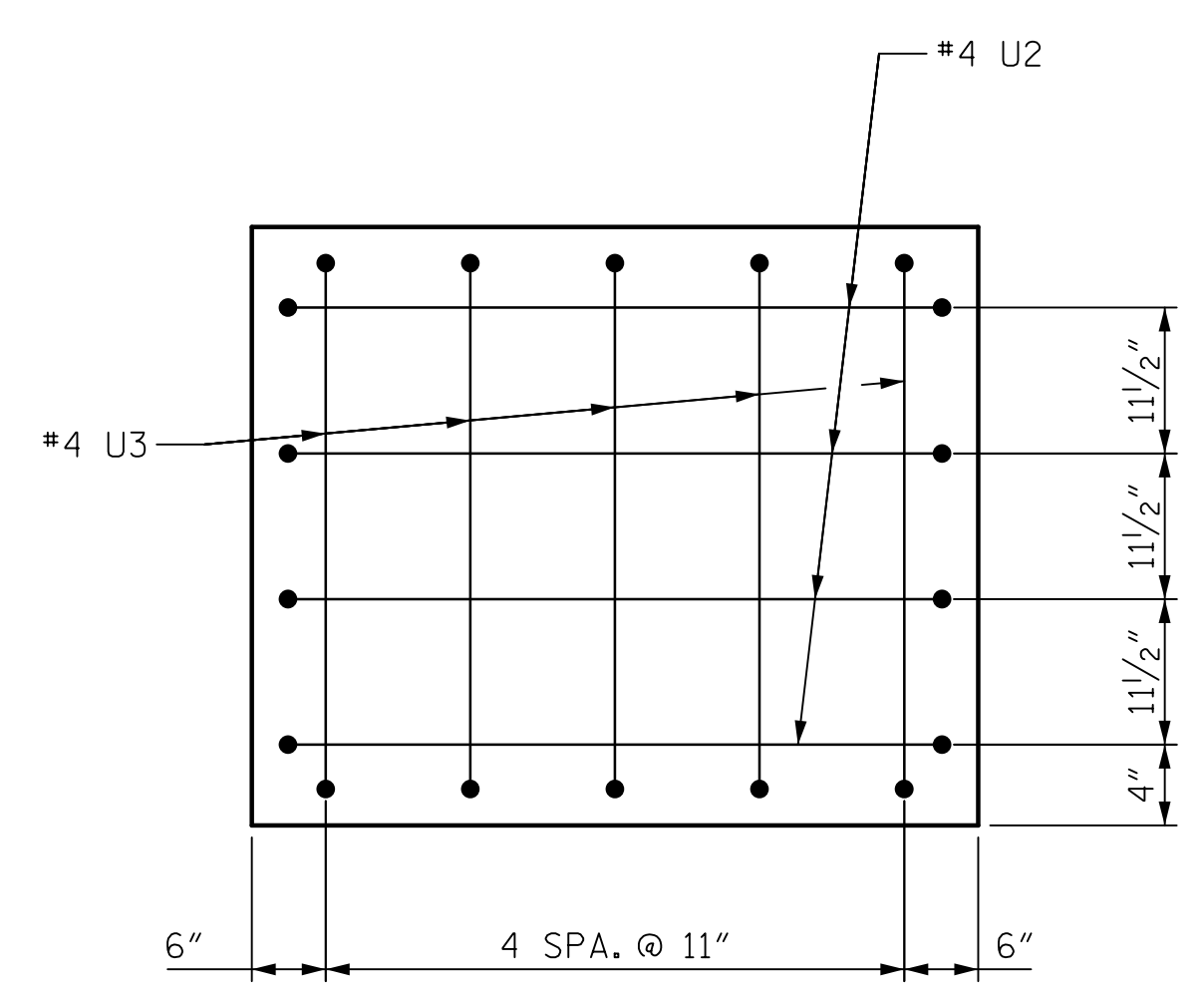
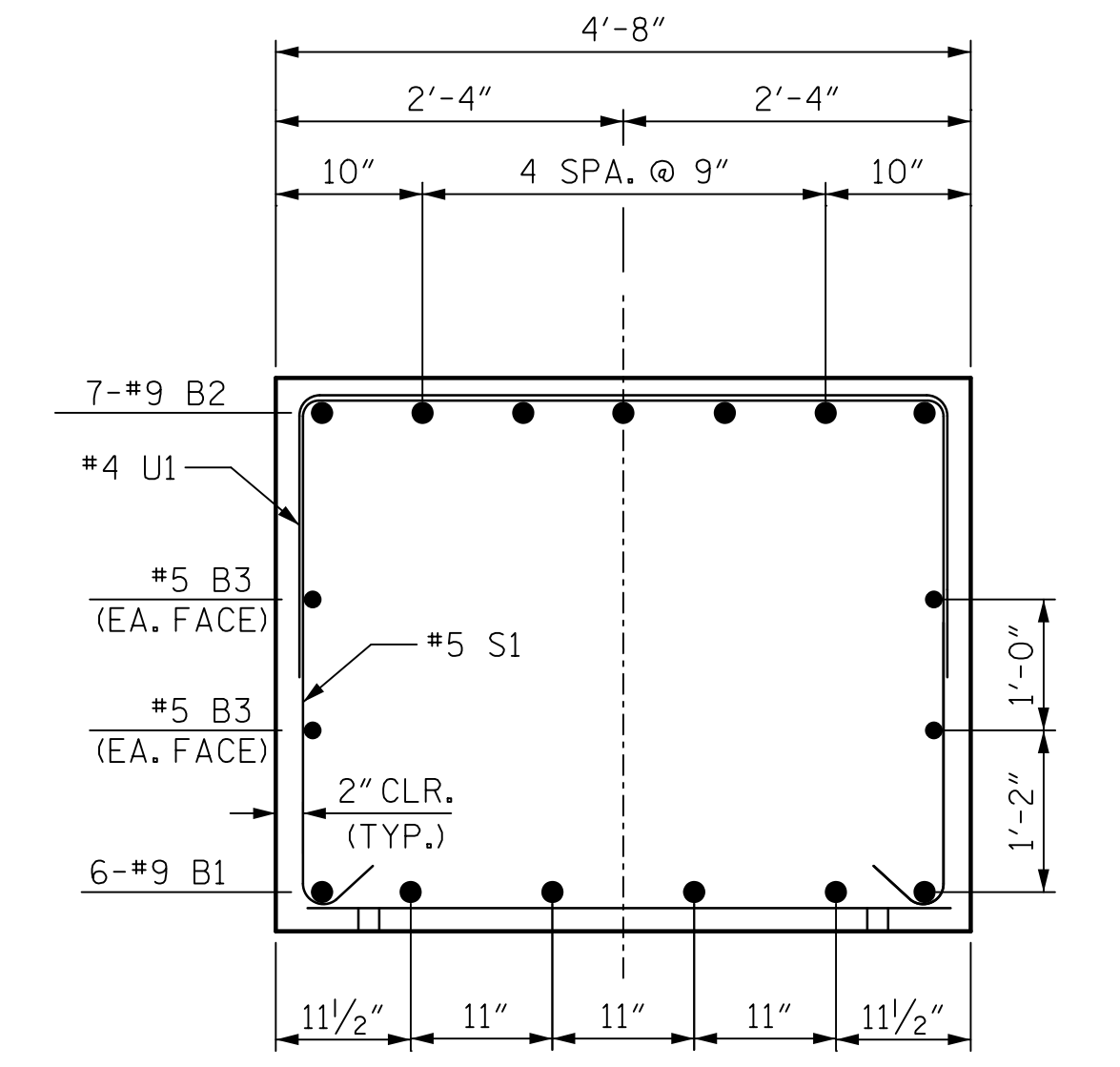
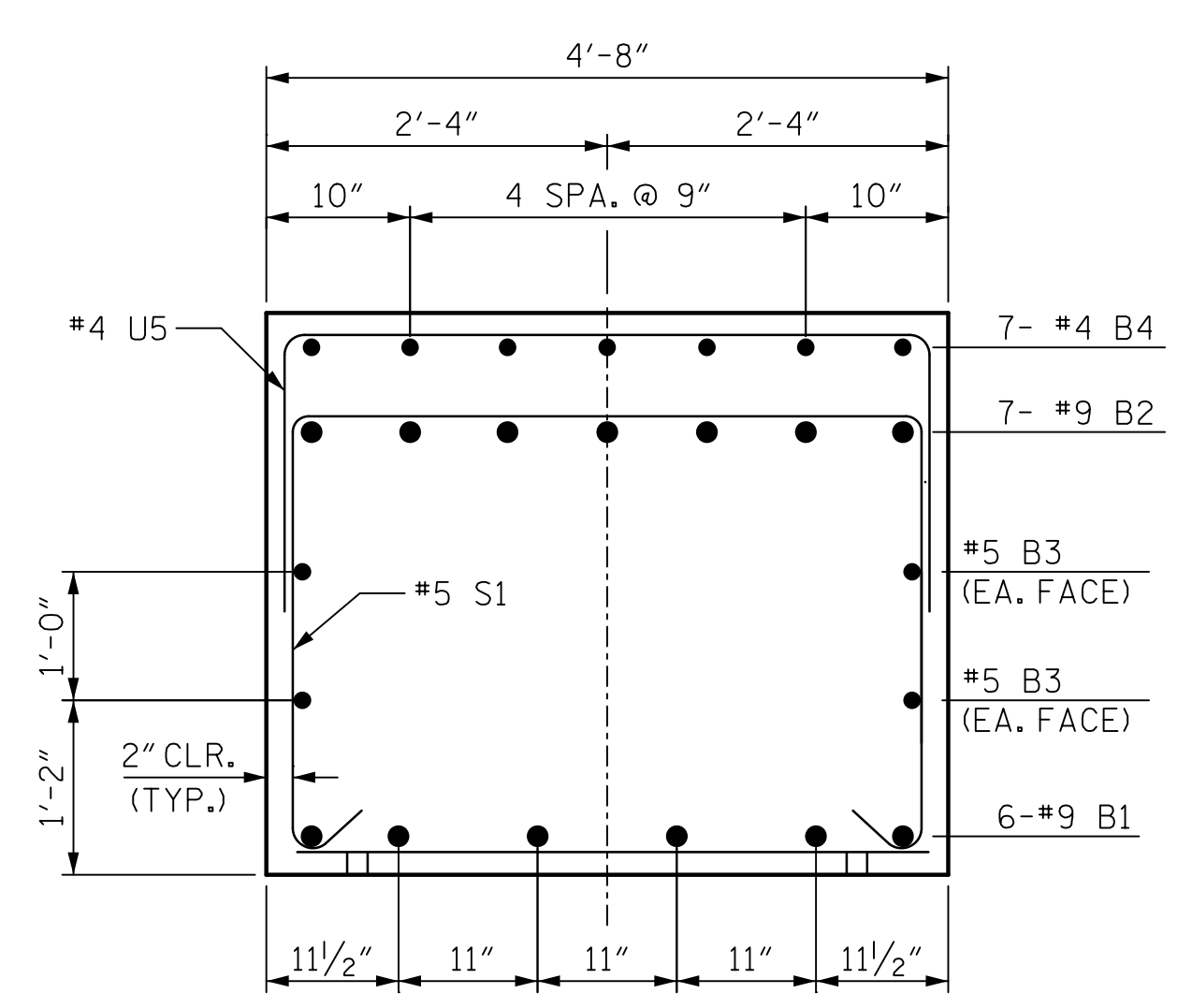
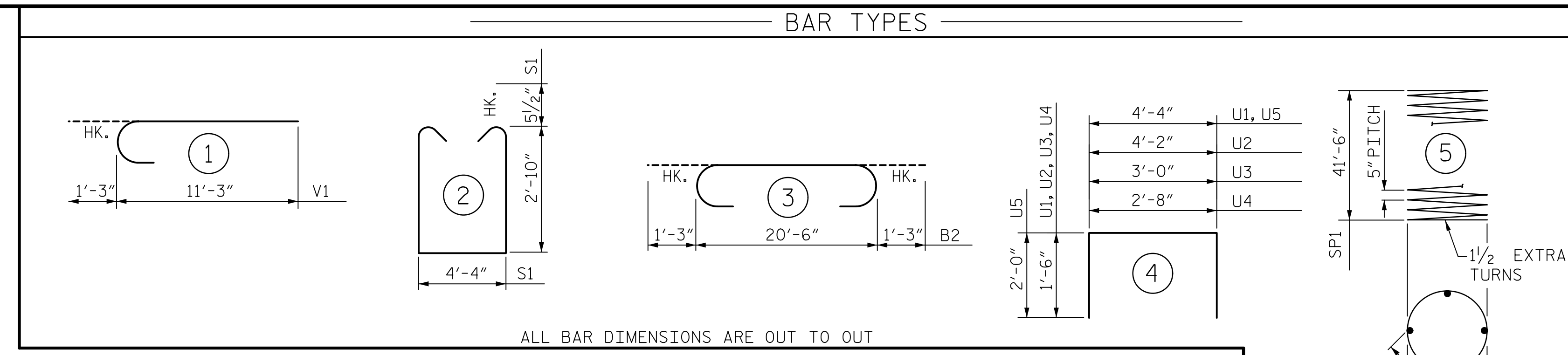
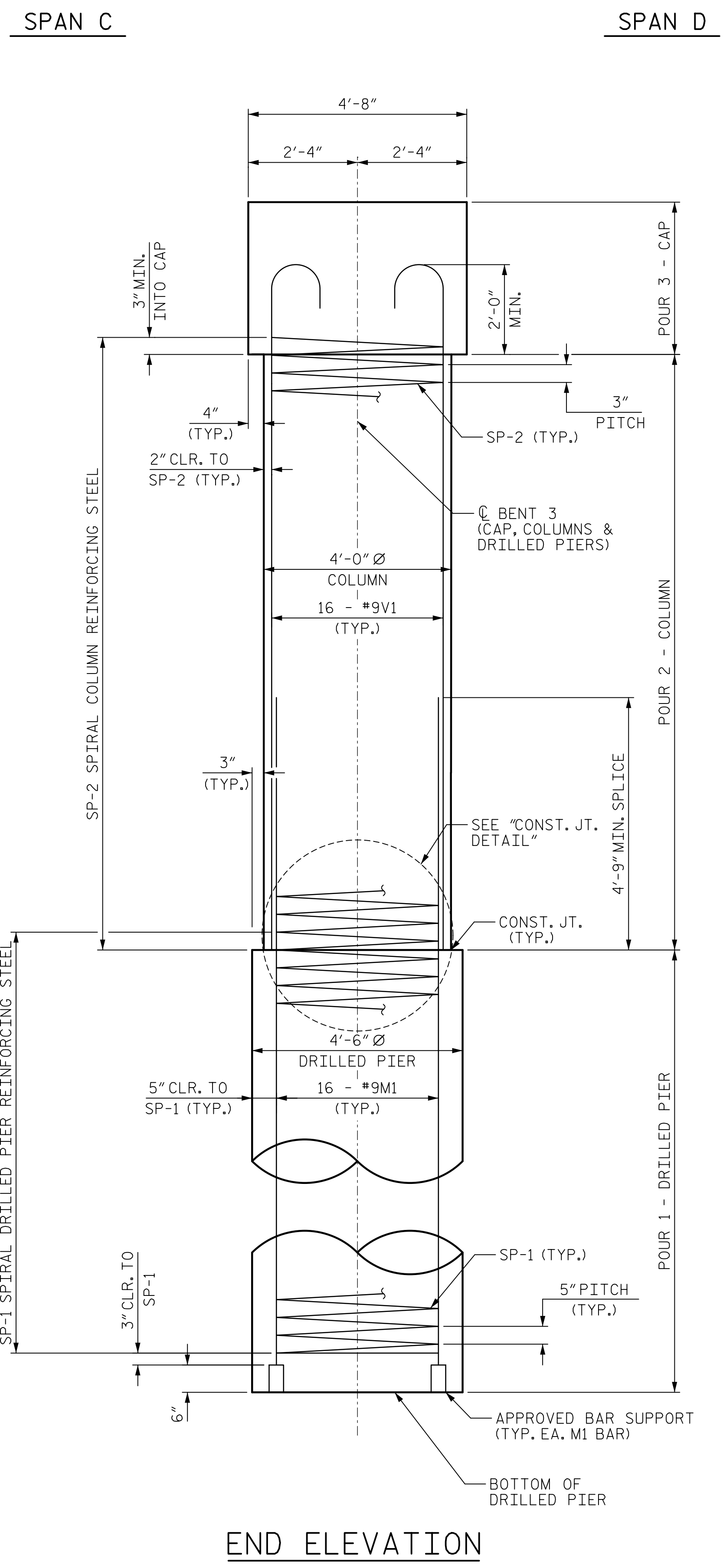


DATE: 2/9/2023
 TIME: 10:47 PM
 USER: catter
 DGN: pva\acomm-nr-pw\beta\19\com\AECOM_DS21_MA_2020\Documents\60609754-U-5748 Ugn MIT900-CAD GIS\910-CAD\70_MCDOT_TIF\Structures\04 Drawings\402_089_U-5748-SM\LB_2_32-44_91031



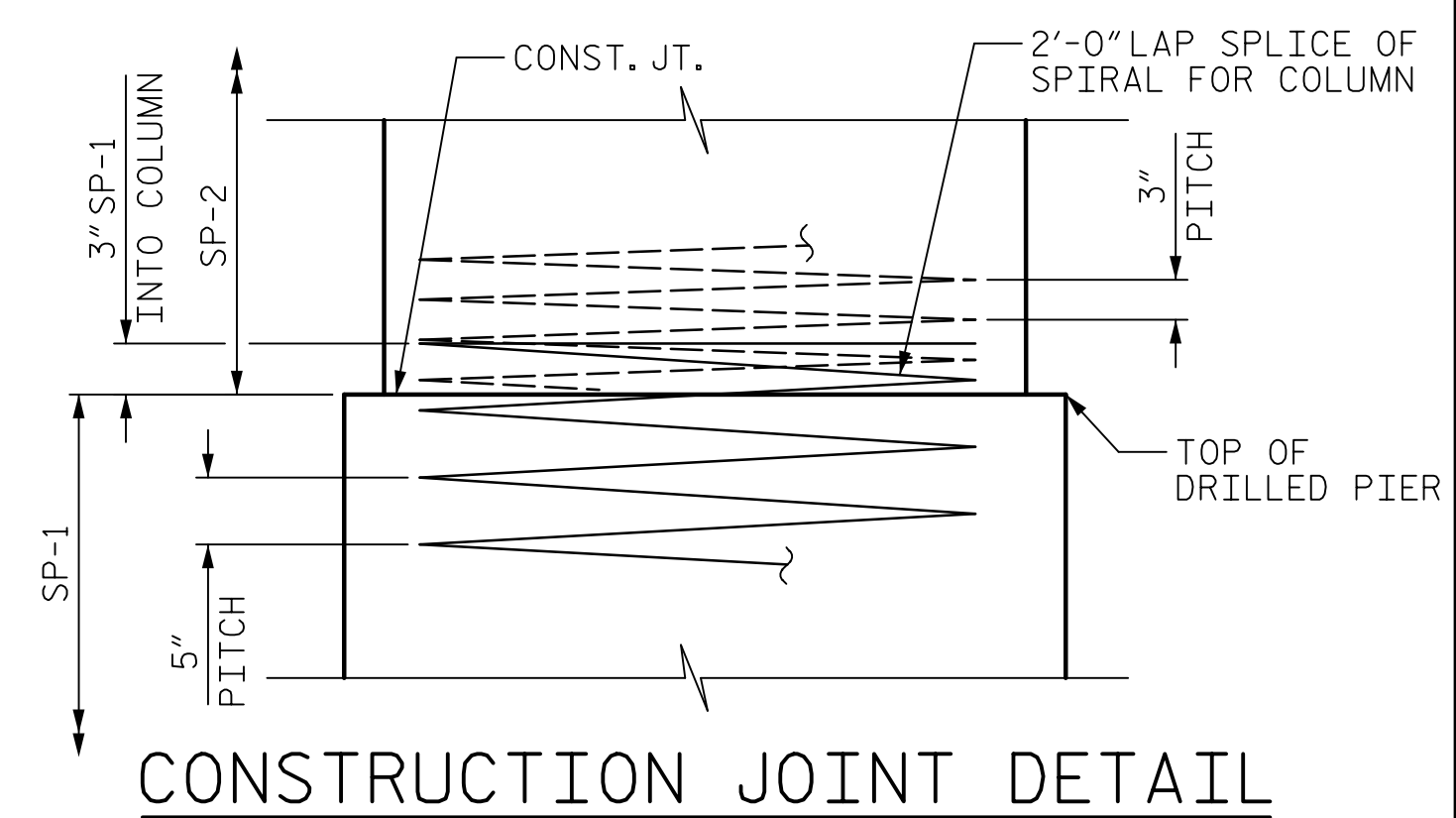
BILL OF MATERIAL

BENT 3

BAR	No.	SIZE	TYPE	LENGTH	WEIGHT
B1	6	9	STR	20'-8"	422
B2	7	9	3	23'-0"	547
B3	6	5	STR	20'-8"	129
B4	7	4	STR	4'-4"	20
M1	32	9	STR	49'-3"	5,358
V1	32	9	1	12'-6"	1,360
S1	23	5	2	10'-11"	262
U1	14	4	4	7'-4"	69
U2	8	4	4	7'-2"	38
U3	5	4	4	6'-0"	20
U4	5	4	4	5'-8"	19
U5	7	4	4	8'-4"	39
SP-1	2	**	5	1147'-2"	2,393
SP-2	2	*	6	449'-4"	600
REINFORCING STEEL					8,283 LBS.
SPIRAL COLUMN REINFORCING STEEL					2,993 LBS.
CLASS A CONCRETE BREAKDOWN					
POUR #2 (COLUMNS)					8.6 C.Y.
POUR #3 (CAP)					12.2 C.Y.
TOTAL CLASS A CONCRETE					20.8 C.Y.
DRILLED PIERS					
DRILLED PIER CONCRETE POUR 1 (DRILLED PIERS)					49.5 C.Y.

** THE "SP-1" SPIRAL REINFORCING STEEL SHALL BE W21 OR D-31 COLD DRAWN WIRE OR #5 PLAIN OR DEFORMED BAR.

* THE "SP-2" SPIRAL REINFORCING STEEL SHALL BE W20 OR D-20 COLD DRAWN WIRE OR #4 PLAIN OR DEFORMED BAR.



PROJECT NO. U-5748

WAKE COUNTY

STATION: 24+88.00 -L-

SHEET 2 OF 2

DRAWN BY : M. CATER DATE : 12/2022
 CHECKED BY : J. MORRISON DATE : 12/2022
 DESIGNED BY : B. LEROY DATE : 11/2022
 DESIGN CHECKED BY : J. MORRISON DATE : 11/2022

DOCUMENT NOT CONSIDERED FINAL UNLESS ALL SIGNATURES COMPLETED

AECOM

AECOM TECHNICAL SERVICES OF NC, INC.
 5438 WADE PARK BOULEVARD, SUITE 200
 RALEIGH, NC 27607
 (919) 854-6200 www.aecom.com
 AECOM License No. F-0342

JOHN C. MORRISON
 NORTH CAROLINA PROFESSIONAL ENGINEER
 SEAL 030474

2/10/2023

STATE OF NORTH CAROLINA
DEPARTMENT OF TRANSPORTATION
 RALEIGH

SUBSTRUCTURE

BENT 3

(SOUTHBOUND LANES)

REVISIONS						SHEET NO.
NO.	BY:	DATE:	NO.	BY:	DATE:	S2-44
1			3			TOTAL SHEETS
2			4			119