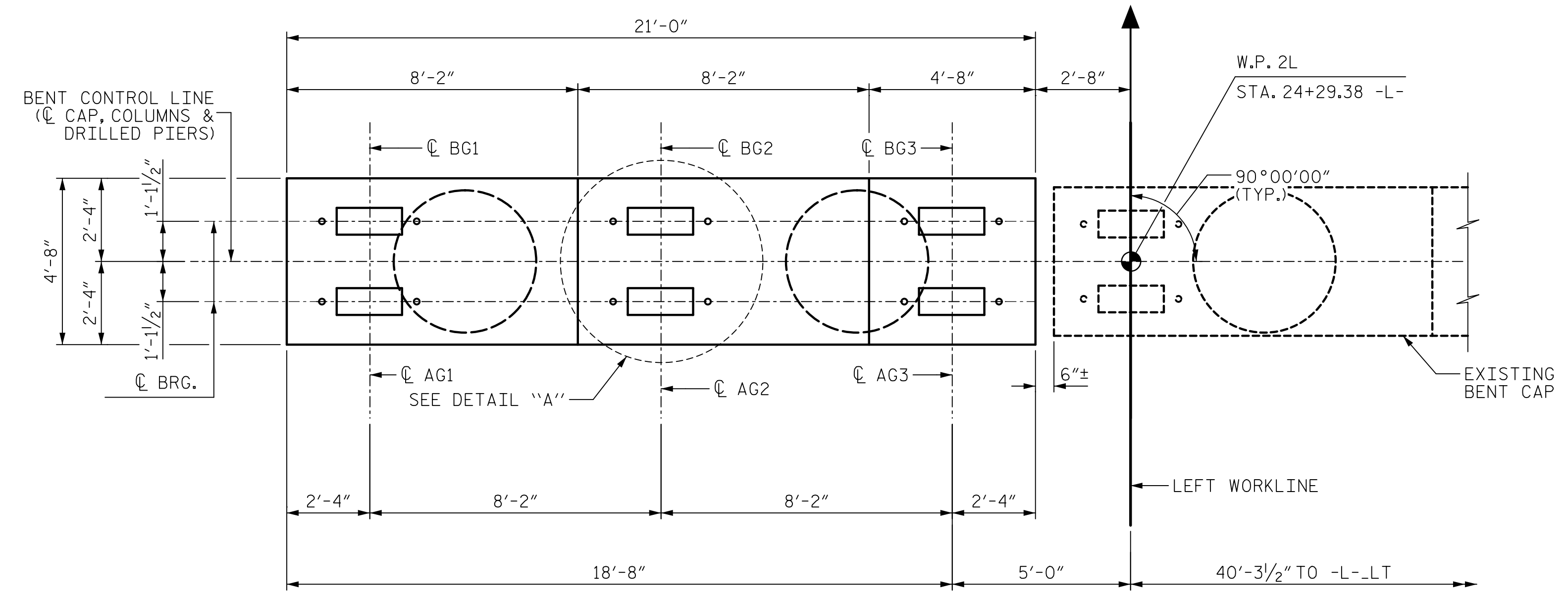
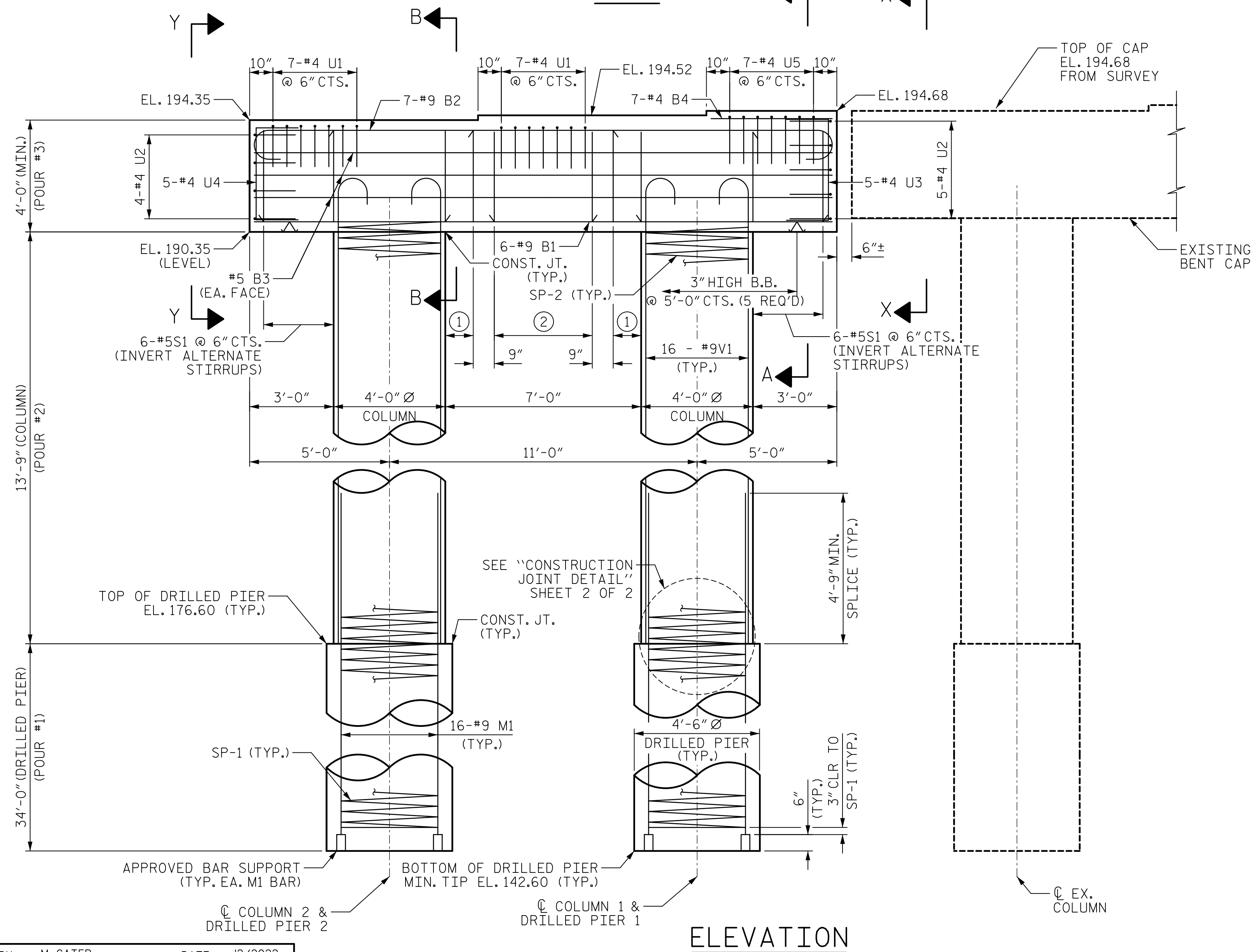


DATE: 2/2/2023  
TIME: 1:04:40 PM

USER: c:\pwworking\john.morrison\appdata\local\temp\AutoCAD2023\Drawings\402.ctb J:\U-5748-SM\BLJ\_S2-39\_9101.dwg  
DRAWN BY: M. CATER  
CHECKED BY: J. MORRISON  
DESIGNED BY: B. LEROY  
DESIGN CHECKED BY: J. MORRISON



**PLAN**



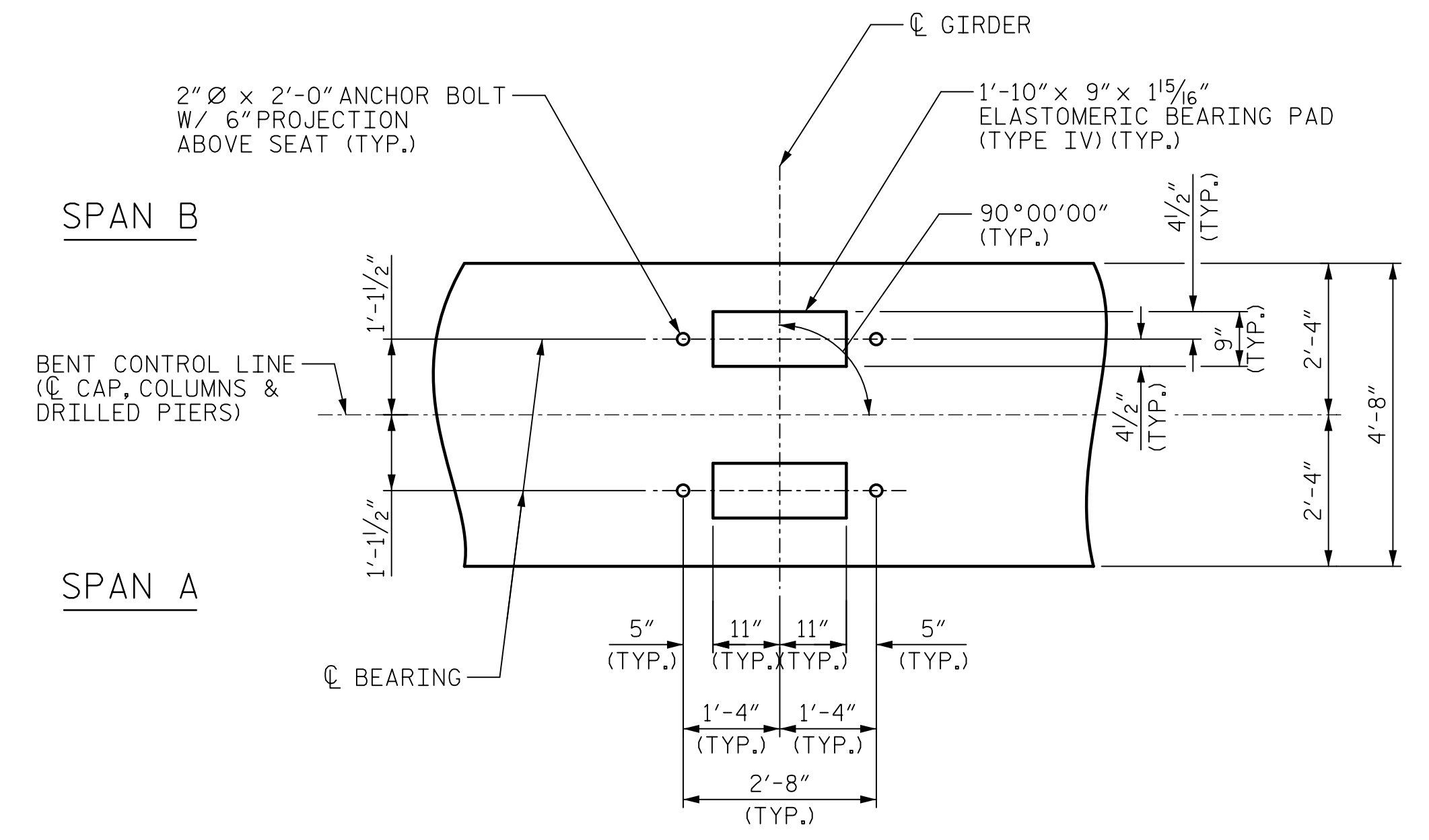
**ELEVATION**

SPAN B

SPAN A

**NOTES:**

- STIRRUPS AND "U" BARS IN CAP MAY BE SHIFTED AS NECESSARY TO CLEAR ANCHOR BOLTS.
- HOOKS ON "V" BARS MAY BE TURNED AS NECESSARY FOR PLACING REINFORCING STEEL.
- ALL STEEL IN THE DRILLED PIERS IS INCLUDED IN THE PAY ITEMS FOR "REINFORCING STEEL" AND "SPIRAL COLUMN REINFORCING STEEL".
- DRILLED PIERS SHALL BE TERMINATED ONE FOOT ± ABOVE NORMAL WATER SURFACE ELEVATION FOR SHAFTS LOCATED IN WATER.
- THE CONTRACTOR'S ATTENTION IS CALLED TO THE FACT THAT THE LONGITUDINAL REINFORCEMENT FOR THE DRILLED PIERS IS DETAILED WITH 3 FEET OF EXTRA LENGTH.
- FOR DRILLED PIERS, SEE SECTION 411 OF THE STANDARD SPECIFICATIONS.
- THE TOP SURFACE AREA OF THE BENT CAPS SHALL BE CURED IN ACCORDANCE WITH THE STANDARD SPECIFICATIONS EXCEPT THE MEMBRANE CURING COMPOUND METHOD SHALL NOT BE USED.



**DETAIL "A"**  
TYP. EA. BEARING

- ① 2-#5S1 @ 6" CTS. (INVERT ALTERNATE STIRRUPS)
- ② 7-#5S1 @ 9" CTS. (INVERT ALTERNATE STIRRUPS)

PROJECT NO. U-5748  
WAKE COUNTY  
STATION: 24+88.00 -L-

SHEET 1 OF 2

**AECOM**  
AECOM TECHNICAL SERVICES OF NC, INC.  
5438 WADE PARK BOULEVARD, SUITE 200  
RALEIGH, NC 27607  
(919) 854-6200 www.aecom.com  
AECOM License No. F-0342

**JOHN C. MORRISON**  
NORTH CAROLINA PROFESSIONAL ENGINEER  
SEAL 030474

2/10/2023

STATE OF NORTH CAROLINA DEPARTMENT OF TRANSPORTATION RALEIGH					
SUBSTRUCTURE					
BENT 1					
(SOUTHBOUND LANES)					
REVISIONS					
NO.	BY:	DATE:	NO.	BY:	DATE:
1			3		
2			4		
SHEET NO. S2-39					TOTAL SHEETS 119

DOCUMENT NOT CONSIDERED FINAL UNLESS ALL SIGNATURES COMPLETED