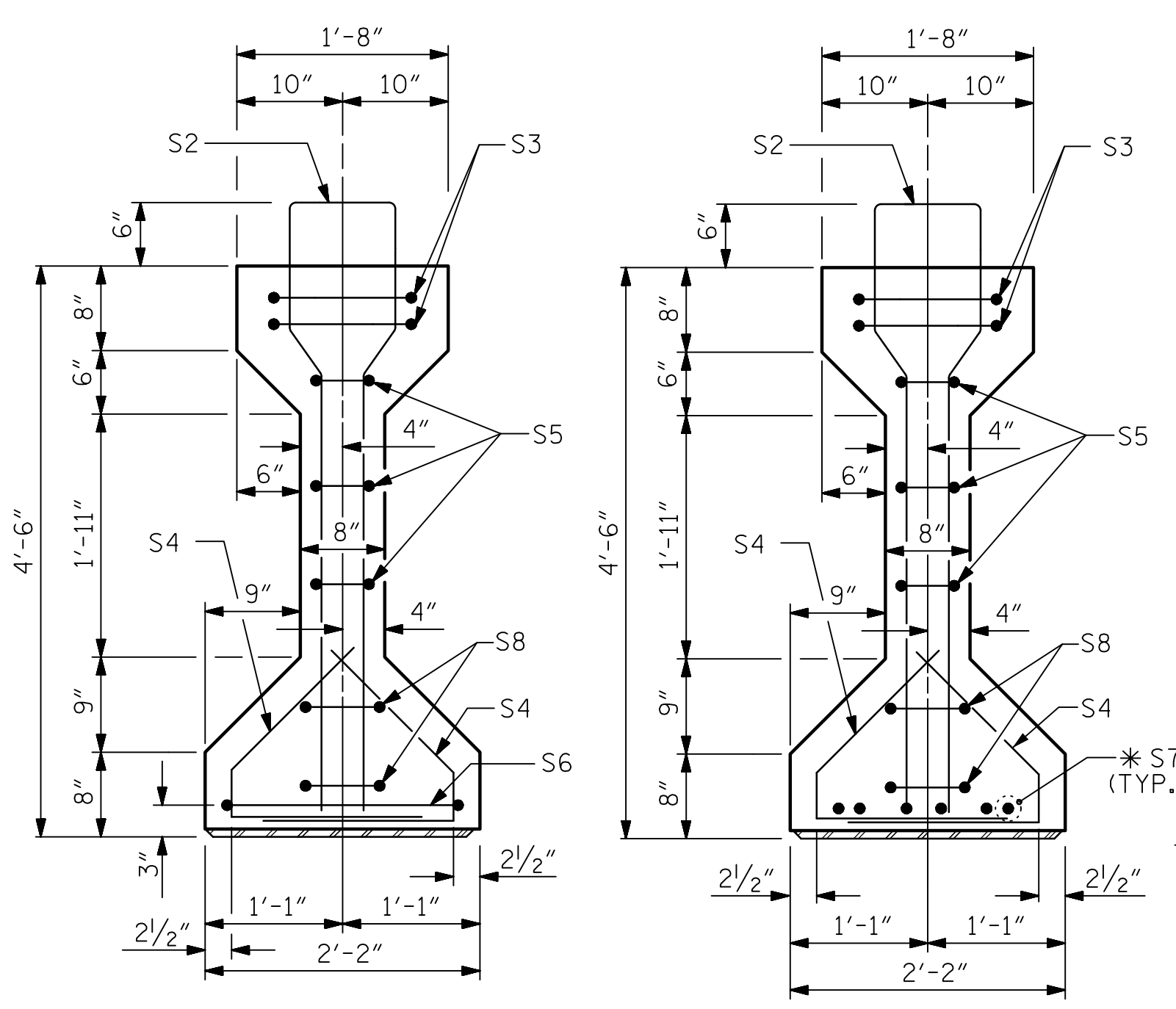


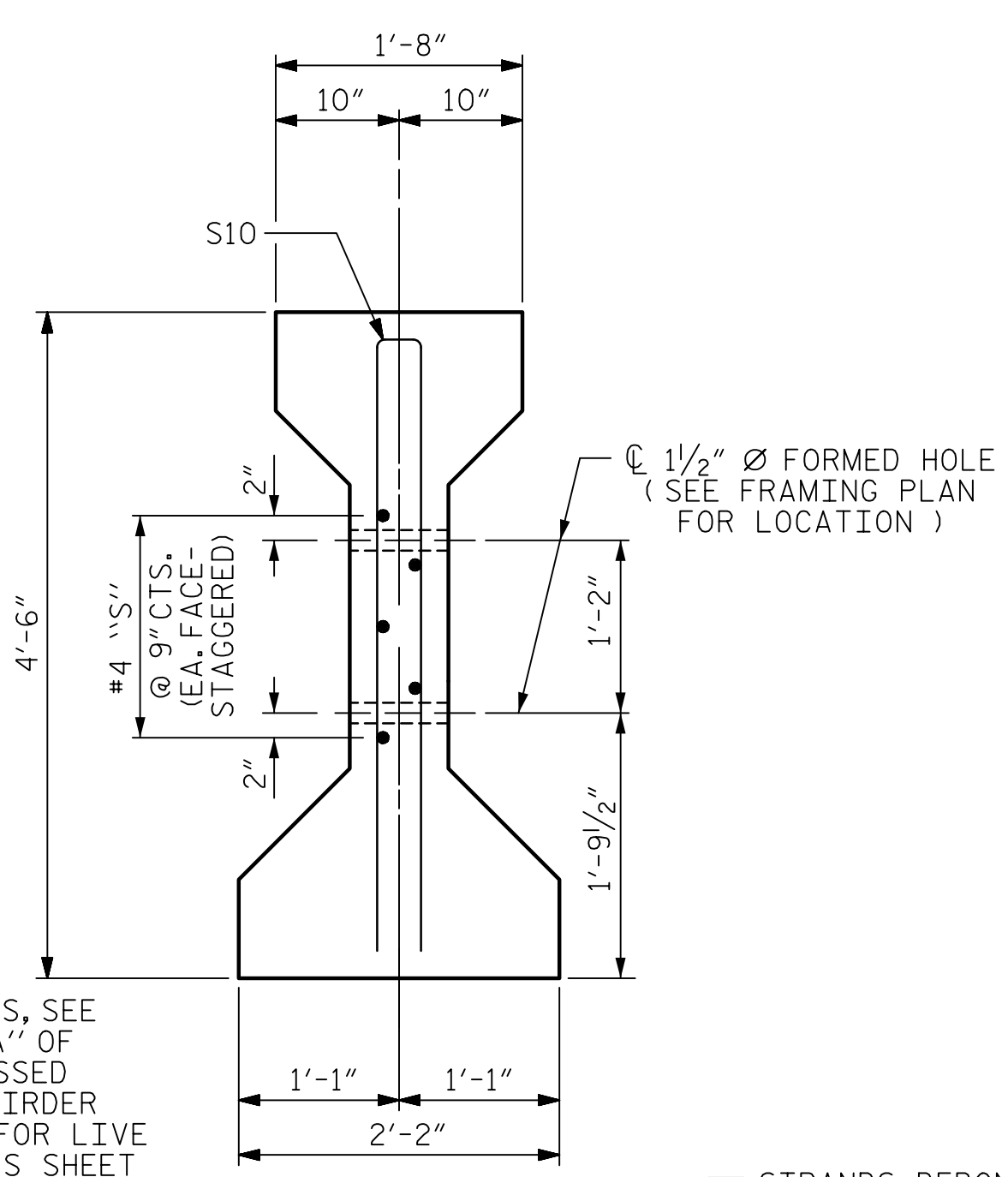
DATE: 10/20/2023  
TIME: 10:53 PM

USER: c:\pwworking\pwworking.com\AECOM\LSZL\A\2020\Drawings\402\DOT-T\IFStructures\04 Drawings\402\DOT-T\U-5748-SIKL.G.L.S2-18-S101.DWG  
DRAWN BY: ELR 8/91  
CHECKED BY: GRP 8/91



SECTION A-A

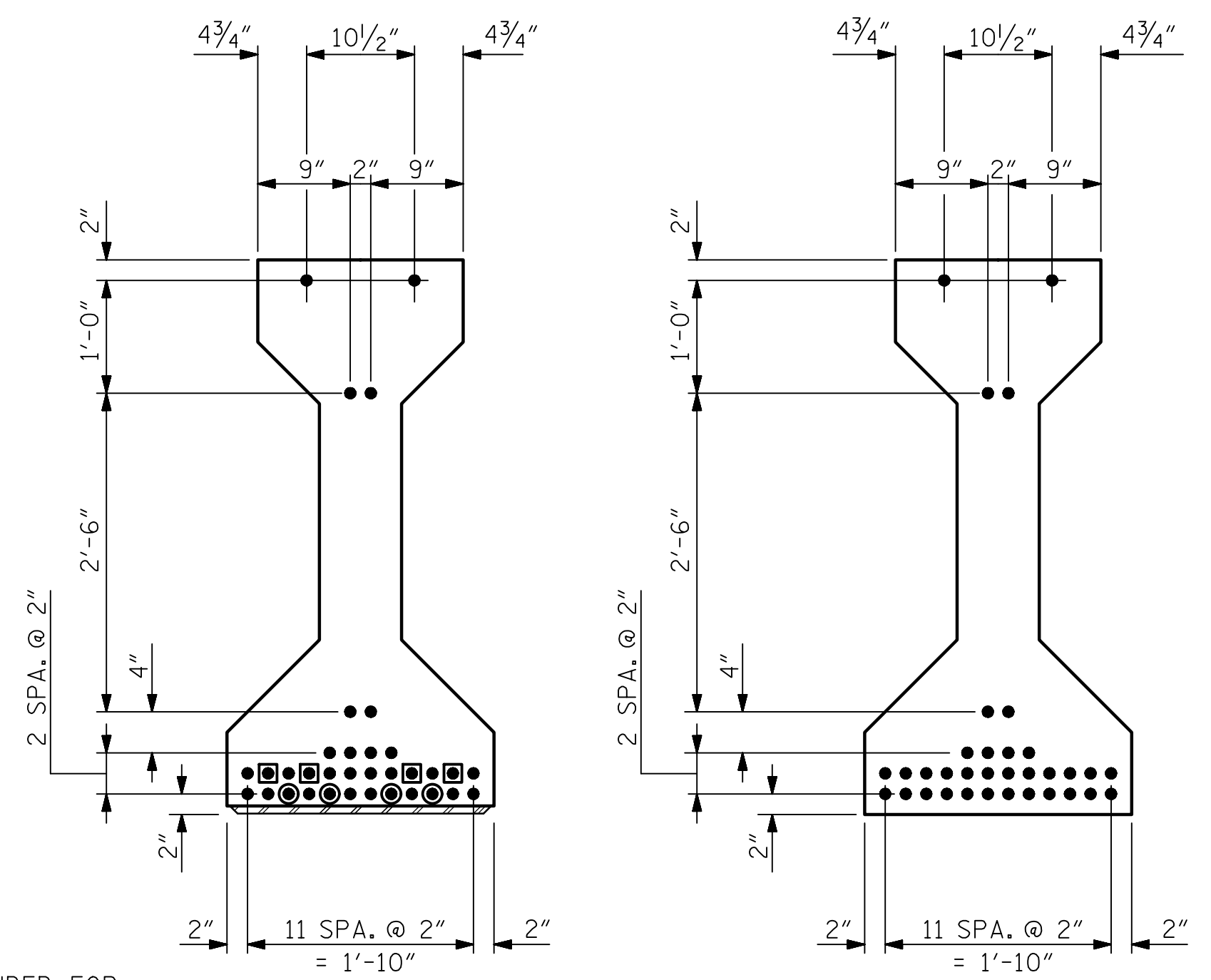
SECTION B-B



SECTION C-C  
(S1 BARS NOT SHOWN)

\* FOR S7 BARS, SEE  
DETAIL "A" OF  
PRESTRESSED  
CONCRETE GIRDER  
CONTINUOUS FOR LIVE  
LOAD DETAILS SHEET

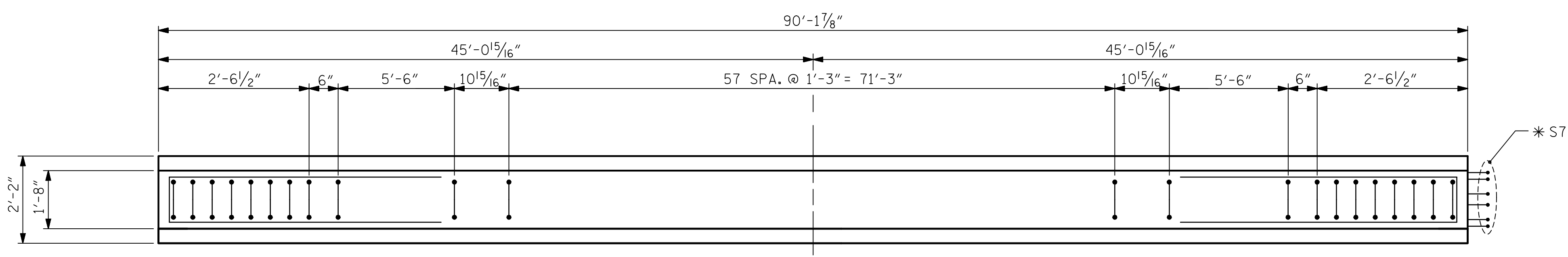
- STRANDS DEBONDED FOR 4'-0" FROM END OF GIRDER
- STRANDS DEBONDED FOR 8'-0" FROM END OF GIRDER



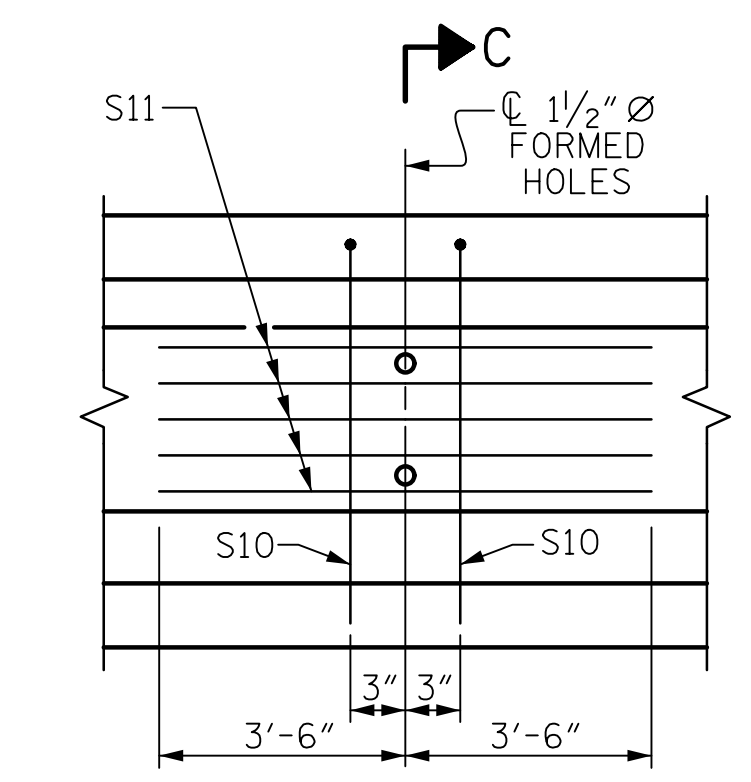
AT END OF GIRDER

AT C OF GIRDER

0.6" Ø LOW RELAXATION STRAND LAYOUT

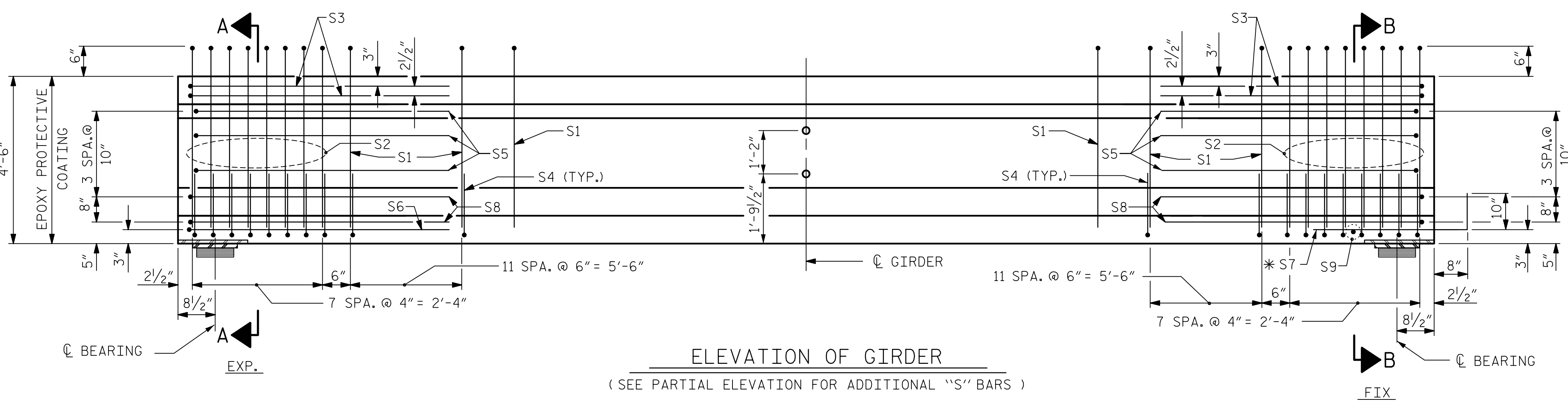


PLAN OF GIRDER



PARTIAL ELEVATION

SHOWING INTERMEDIATE DIAPHRAGM  
REINFORCING STEEL FOR GIRDER Nos. 1, 2 & 3



ELEVATION OF GIRDER

(SEE PARTIAL ELEVATION FOR ADDITIONAL "S" BARS)

0.6" Ø L. R. GRADE 270 STRANDS		
AREA (SQUARE INCHES)	ULTIMATE STRENGTH (LBS. PER STRAND)	APPLIED PRESTRESS (LBS. PER STRAND)
0.217	58,600	43,950

REINFORCING STEEL FOR ONE GIRDER					
BAR	NUMBER	SIZE	TYPE	LENGTH	WEIGHT
S1	74	#4	1	10'-8"	527
S2	16	#6	1	10'-8"	256
S3	4	#4	2	9'-1"	24
S4	80	#4	3	3'-5"	183
S5	6	#4	2	8'-5"	34
S6	1	#4	2	9'-11"	7
* S7	6	#5	STR	3'-8"	23
S8	4	#4	2	8'-7"	23
S9	1	#3	STR	1'-10"	1
S10	2	#5	2	8'-8"	18
S11	5	#4	STR	7'-0"	23

\* NOTE: S7 BARS SHALL BE BENT BEFORE SHIPMENT. HEAT BENDING SHALL NOT BE ALLOWED.

BAR TYPES	
ALL BAR DIMENSIONS ARE OUT-TO-OUT	
	1'-1" S3
	5" S5
	1'-11" S6
	7" S8
	4" S10
	4'-2" S10
	4'-0" S3, S5, S6 & S8

QUANTITIES FOR ONE GIRDER			
	REINFORCING STEEL	8,000 PSI CONCRETE	0.6" Ø L. R. STRANDS
	LB.	C.Y.	No.
GIRDER 1, 2 & 3	1,119	18.3	34

GIRDERS REQUIRED		
NUMBER	LENGTH	TOTAL LENGTH
3	90'-17/8"	270'-5/8"

PROJECT NO. U-5748  
 WAKE COUNTY  
 STATION: 24+88.00 -L-

SHEET 1 OF 5

ASSEMBLED BY : M. CATER	DATE : 10/20/2020
CHECKED BY : J.C. MORRISON	DATE : 05/20/2021
DRAWN BY : ELR 8/91	REV. 10/11/11 MAA/GM
CHECKED BY : GRP 8/91	REV. 1/15 MAA/TMG
	REV. 12/17 MAA/THC

DOCUMENT NOT CONSIDERED FINAL UNLESS ALL SIGNATURES COMPLETED

**AECOM**  
 AECOM TECHNICAL SERVICES OF NC, INC.  
 5438 WADE PARK BOULEVARD, SUITE 200  
 RALEIGH, NC 27607  
 (919) 854-6200  
 www.aecom.com  
 AECOM License No. F-0342

**John C. Morrison**  
 NORTH CAROLINA PROFESSIONAL ENGINEER  
 SEAL 030474  
 JOHN C. MORRISON  
 2/10/2023

STATE OF NORTH CAROLINA DEPARTMENT OF TRANSPORTATION RALEIGH					
STANDARD AASHTO TYPE IV PRESTRESSED CONCRETE GIRDER CONTINUOUS FOR LIVE LOAD SPAN A					
REVISIONS					
NO.	BY:	DATE:	NO.	BY:	DATE:
1			3		
2			4		

SHEET NO. S2-18	
TOTAL SHEETS 119	