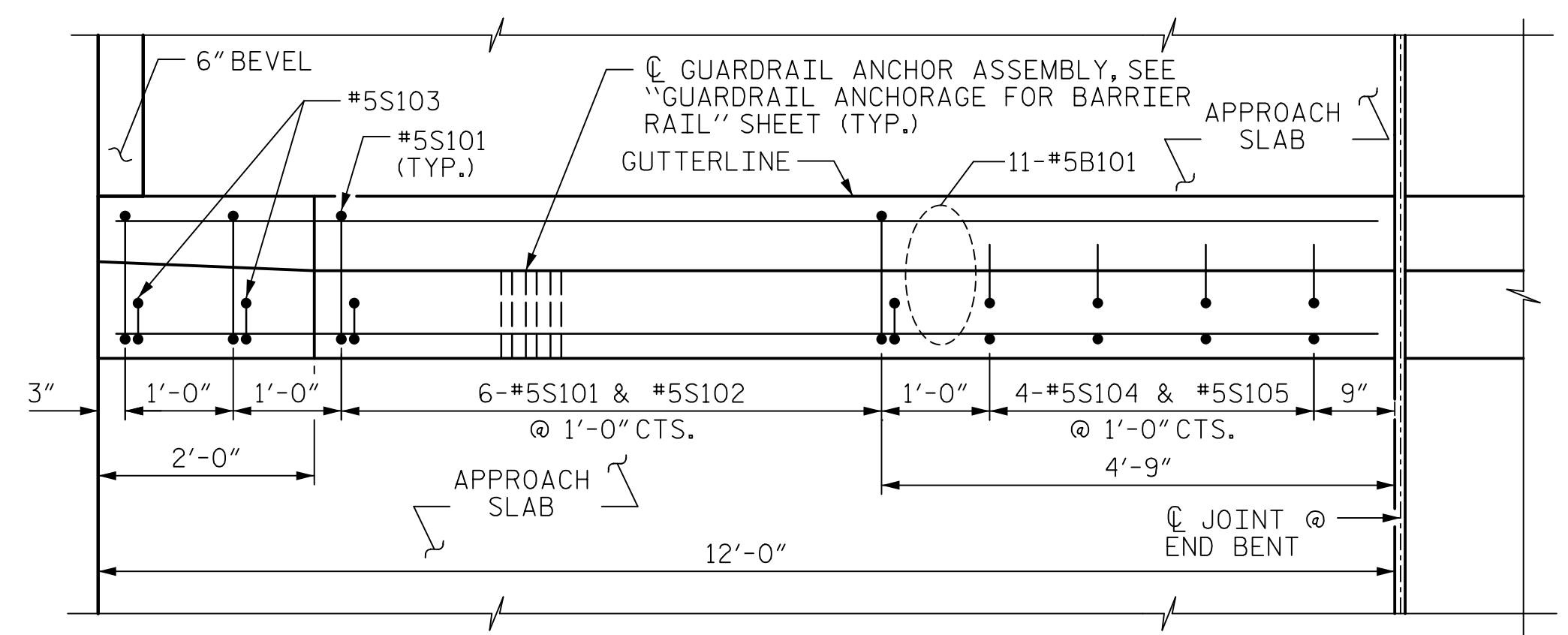
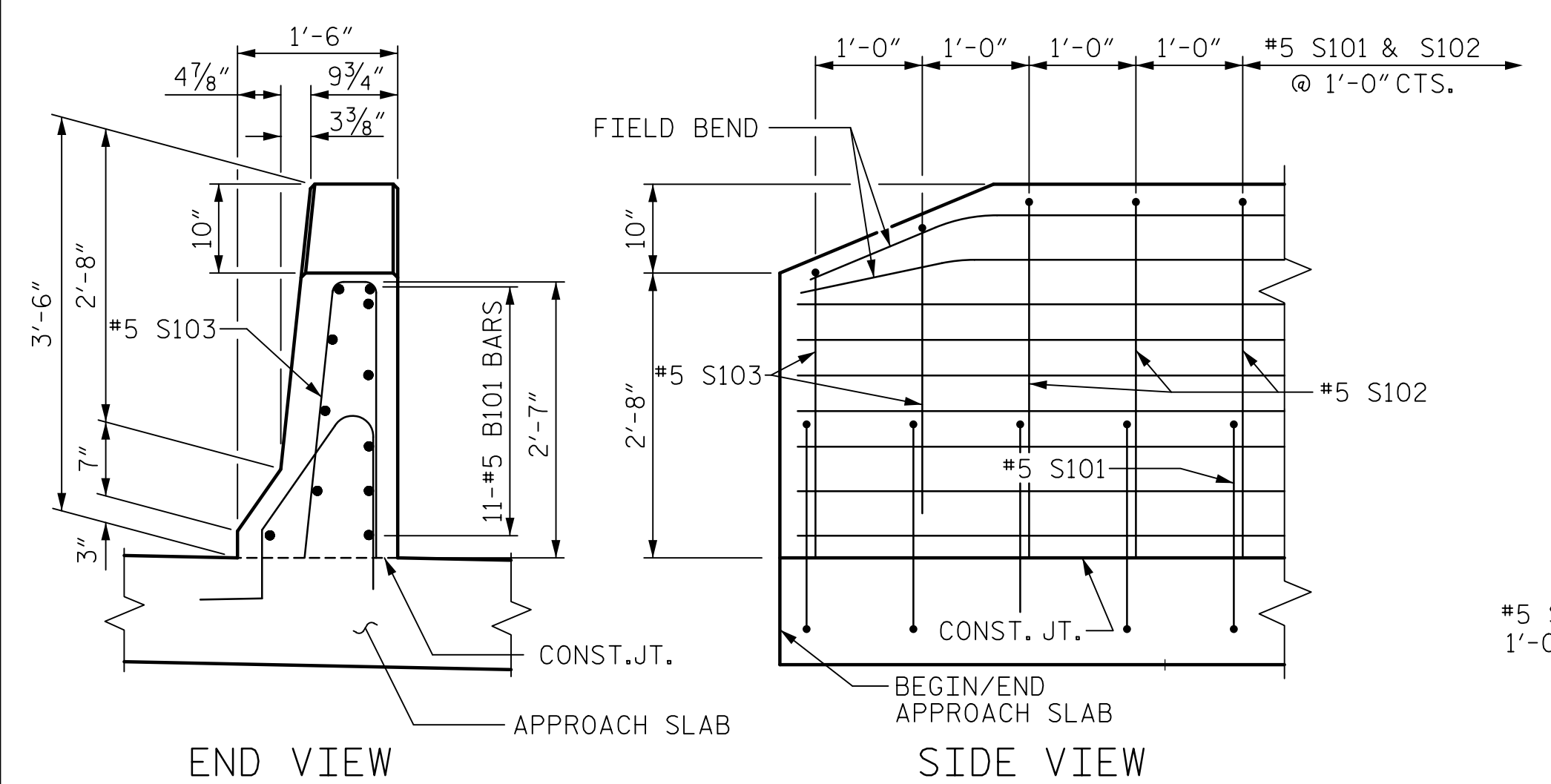


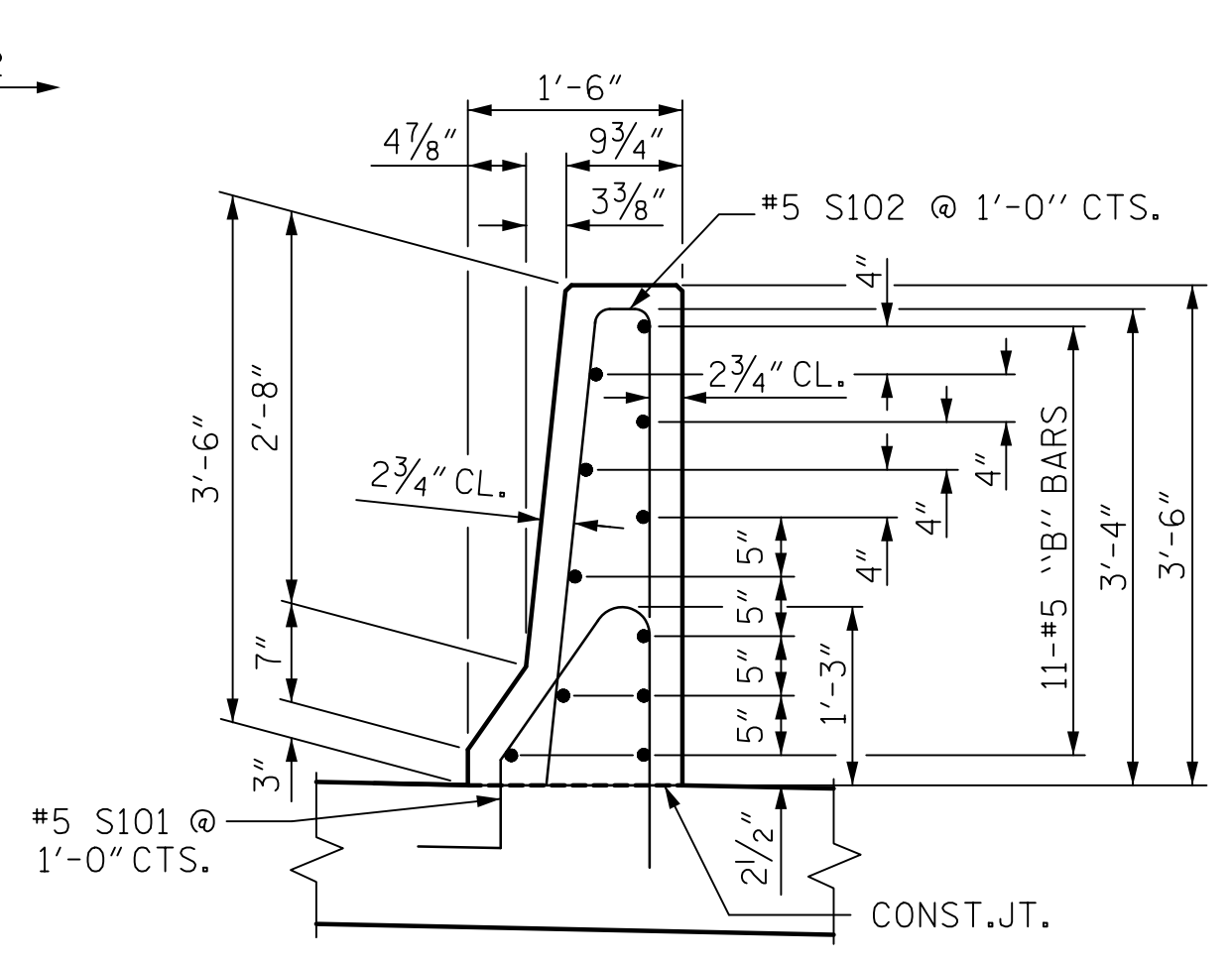
NOTES:
FOR NOTES, SEE SHEET 2 OF 3



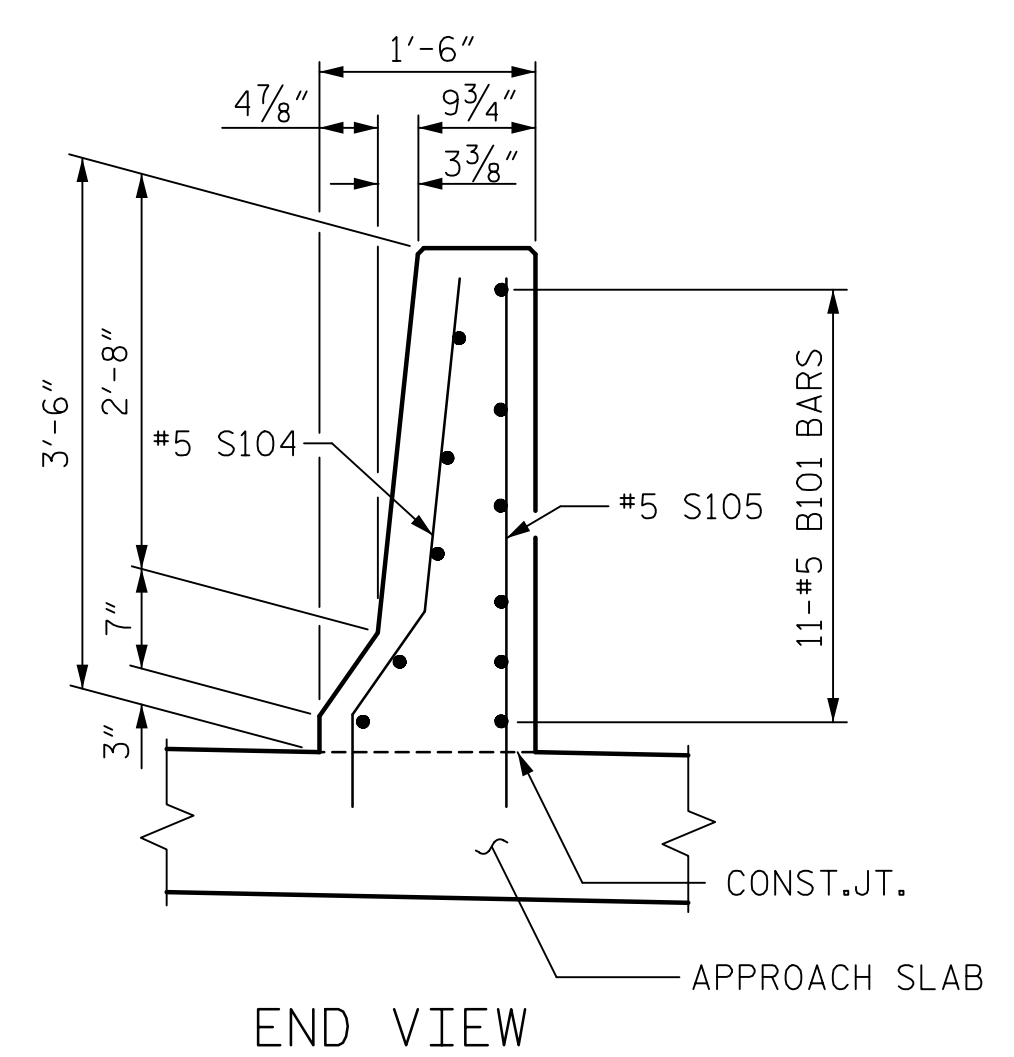
PLAN OF BARRIER RAIL
END BENT 1 SHOWN, END BENT 2 SIMILAR.



END OF RAIL DETAILS

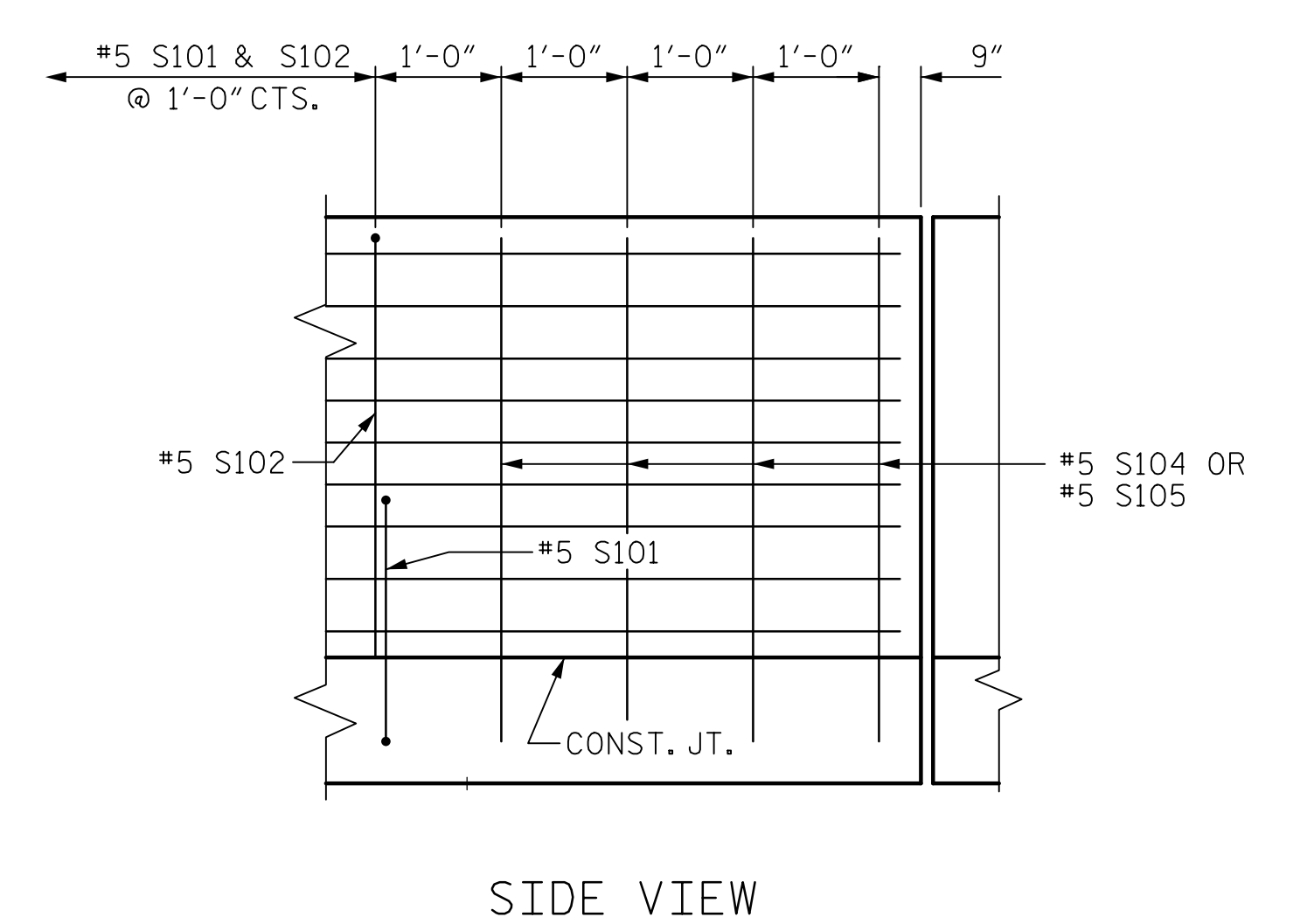


SECTION THRU RAIL

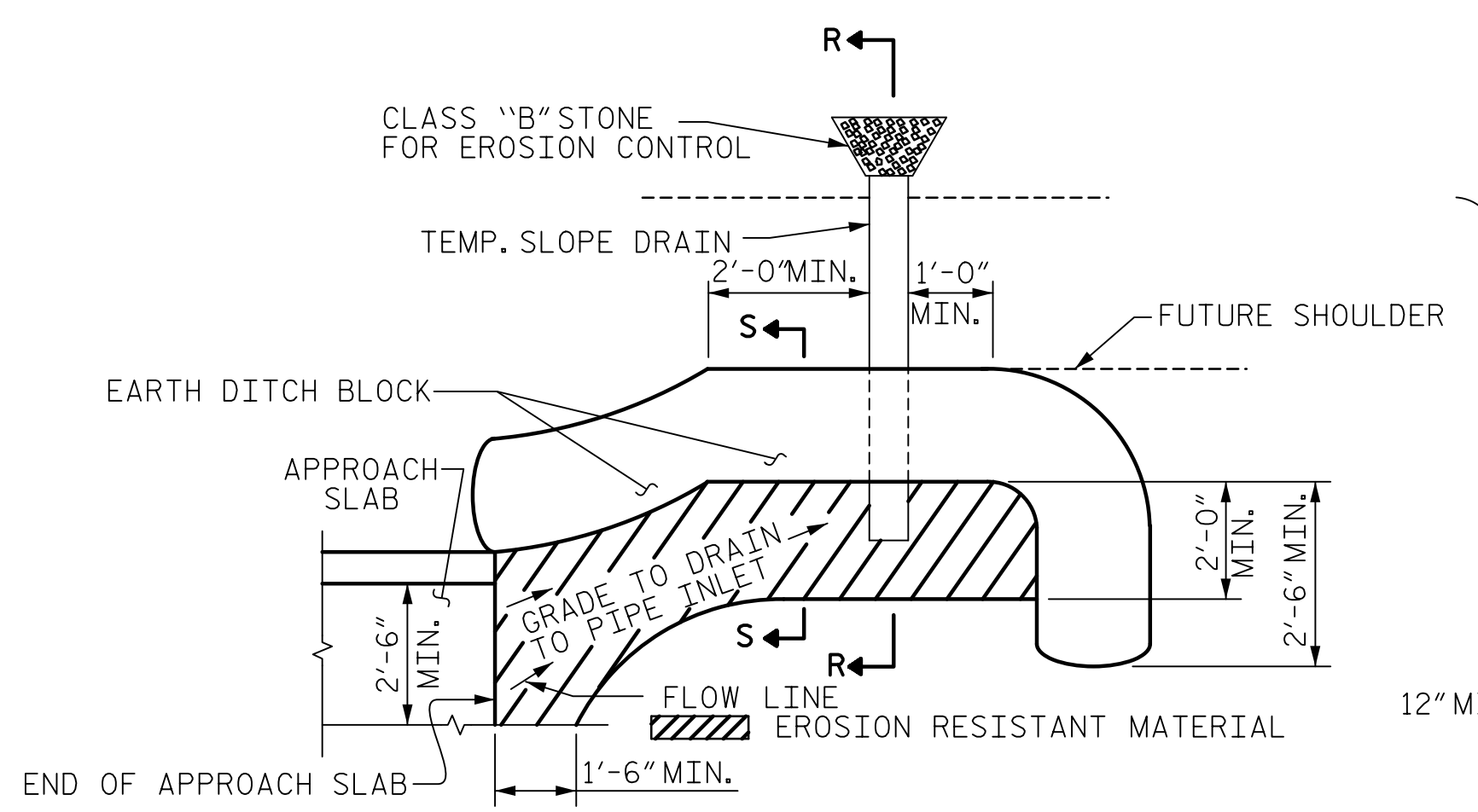


END OF RAIL DETAILS @ EXP. JOINT

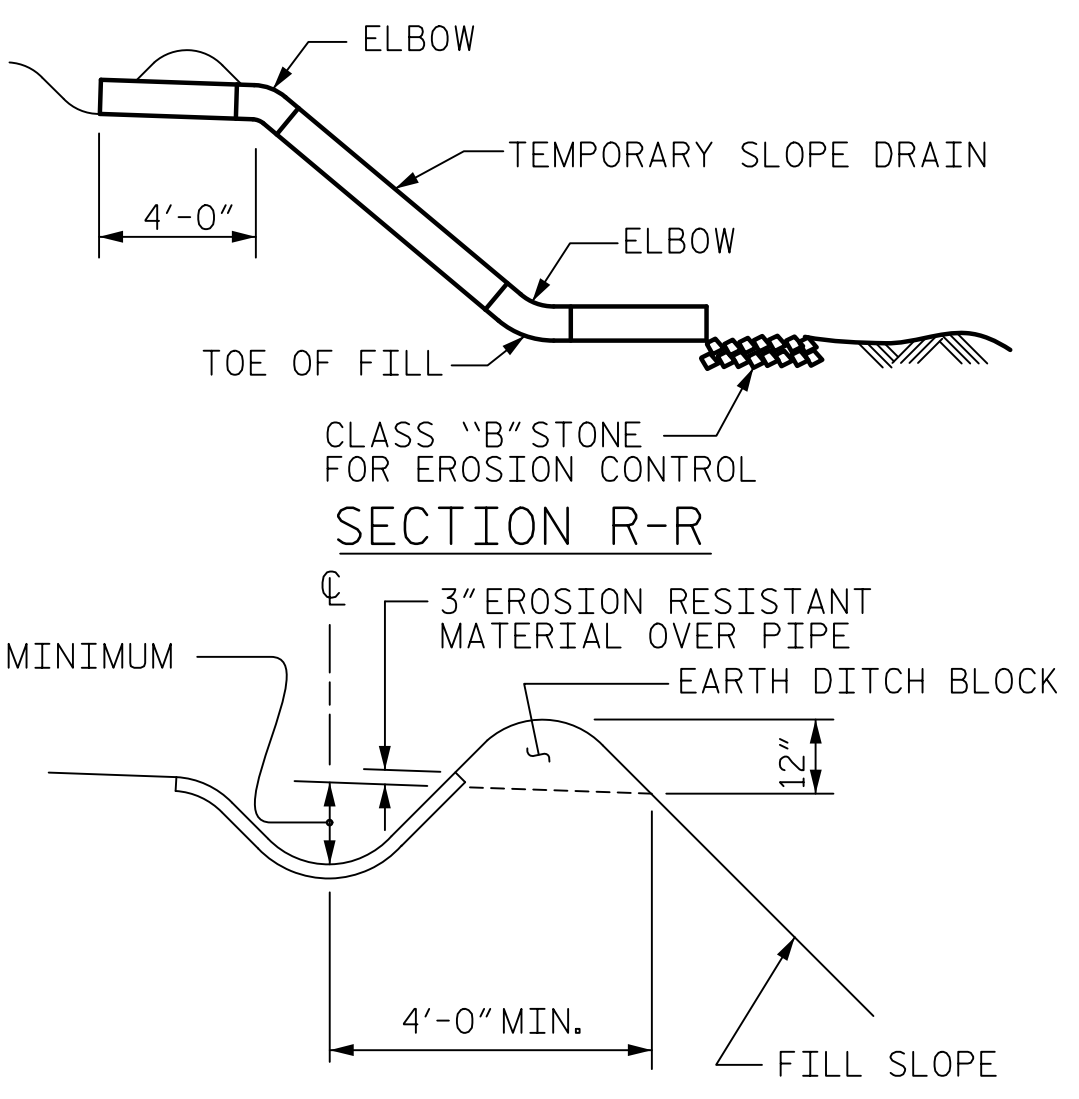
FOR ADHESIVE ANCHORING AT SAWED JOINTS



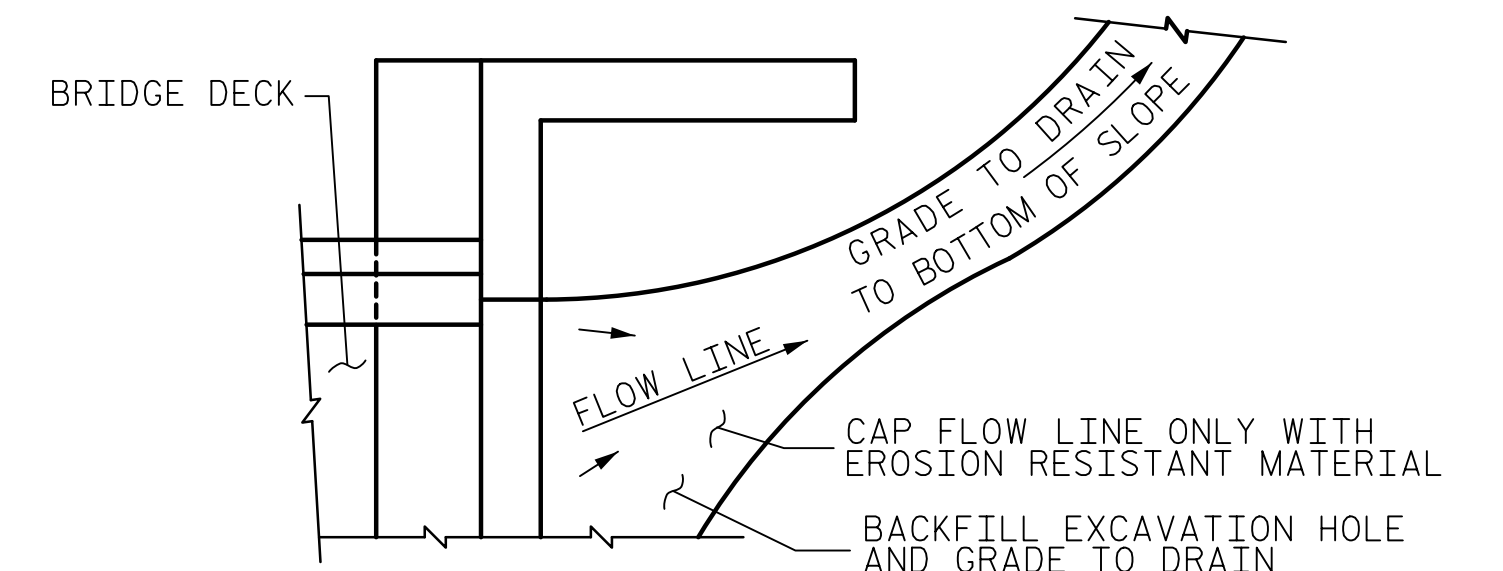
SIDE VIEW



PLAN VIEW



SECTION S-S



TEMPORARY DRAINAGE DETAIL

NOTE: IF THE APPROACH SLAB IS NOT CONSTRUCTED IMMEDIATELY AFTER THE BACKFILLING OF THE END BENT EXCAVATION, GRADE TO DRAIN TO THE BOTTOM OF THE SLOPE AND PROVIDE EROSION RESISTANT MATERIAL, SUCH AS FIBERGLASS ROVING OR AS DIRECTED BY THE ENGINEER TO PREVENT SOIL EROSION AND TO PROTECT THE AREA ADJACENT TO THE STRUCTURE. THE CONTRACTOR WILL BE REQUIRED TO REMOVE THESE MATERIALS PRIOR TO CONSTRUCTION OF THE APPROACH SLAB.

NOTE: IMMEDIATELY AFTER THE CONSTRUCTION OF THE APPROACH SLAB, THE CONTRACTOR SHALL PROVIDE TEMPORARY BERM AND SLOPE DRAIN. CONTRACTOR SHALL GRADE TO PIPE INLET AND PROVIDE EROSION RESISTANT MATERIAL AS SHOWN. THE EROSION RESISTANT MATERIAL SHALL BE EITHER 1) ASPHALT PLANT MIX, TYPE 1 OR TYPE 2, MIN. 2" DEPTH, 2) EROSION CONTROL MAT, OR 3) CONCRETE, AS DIRECTED BY THE ENGINEER. THE SLOPE DRAIN SHALL CONSIST OF A NON-PERFORATED TEMPORARY DRAINAGE PIPE, 12 INCHES IN DIAMETER.

PROJECT NO. U-5748
WAKE COUNTY
STATION: 24+88.00 -L-

SHEET 3 OF 3

AECOM
AECOM TECHNICAL SERVICES OF NC, INC.
5438 WADE PARK BOULEVARD, SUITE 200
RALEIGH, NC 27607
(919) 854-6200
www.aecom.com
AECOM License No. F-0342

John C. Morrison
NORTH CAROLINA PROFESSIONAL ENGINEER
SEAL 030474
2/10/2023

STATE OF NORTH CAROLINA DEPARTMENT OF TRANSPORTATION RALEIGH					
STANDARD					
BRIDGE APPROACH SLAB DETAILS (NORTHBOUND LANES)					
REVISIONS					
NO.	BY:	DATE:	NO.	BY:	DATE:
1			3		
2			4		
SHEET NO. S1-52					TOTAL SHEETS 119

ASSEMBLED BY : D.R. DRUM, M. CATER	DATE : 08/2021
CHECKED BY : J.C. MORRISON	DATE : 06/2021
DRAWN BY : FCJ	11/88
CHECKED BY : ARB	11/88
REV. 6/13	MAA/GM
REV. 12/17	MAA/THC
REV. 5/18	MAA/THC

TEMPORARY BERM AND SLOPE DRAIN DETAILS
(TO BE USED WHEN SHOULDER BERM GUTTER IS REQUIRED)

DOCUMENT NOT CONSIDERED FINAL UNLESS ALL SIGNATURES COMPLETED

DATE: 2/9/2023 TIME: 12:45:08 PM USER: c:\pwworking\AECOM\DS21\LA_2020\Drawings\04_MCDOT_TIP\Structures\04 Drawings\04_U-5748_S1-52_91021.dgn