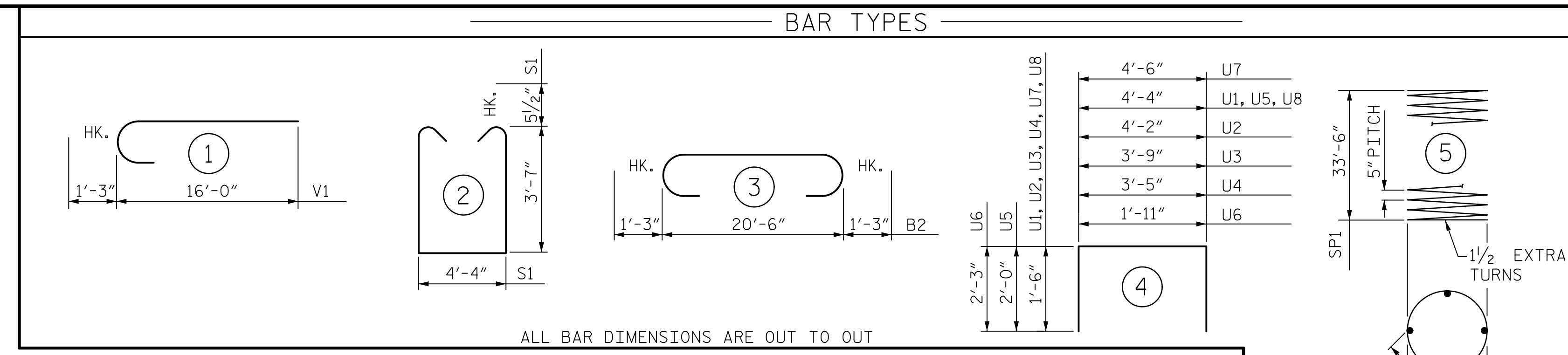
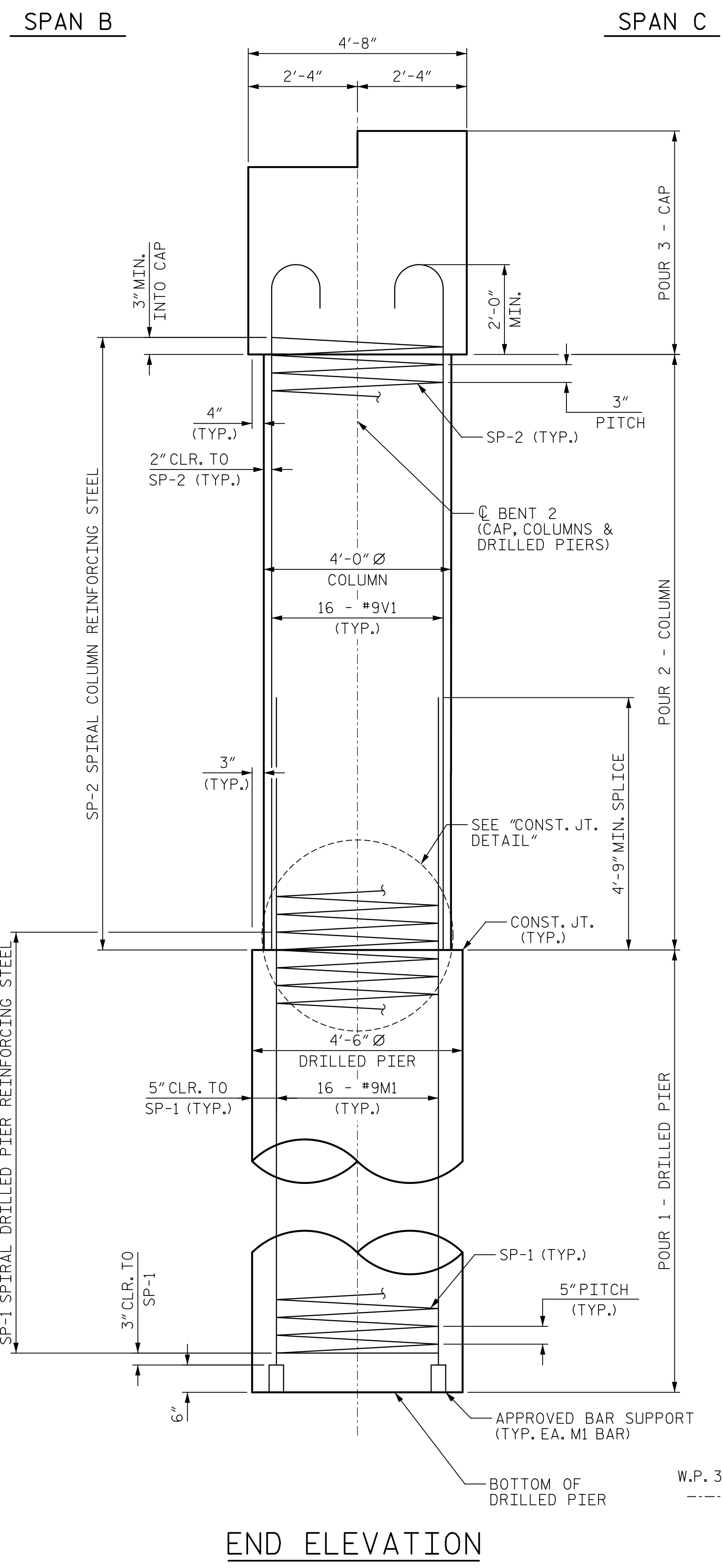


DATE: 2/9/2023
TIME: 12:46:51 PM

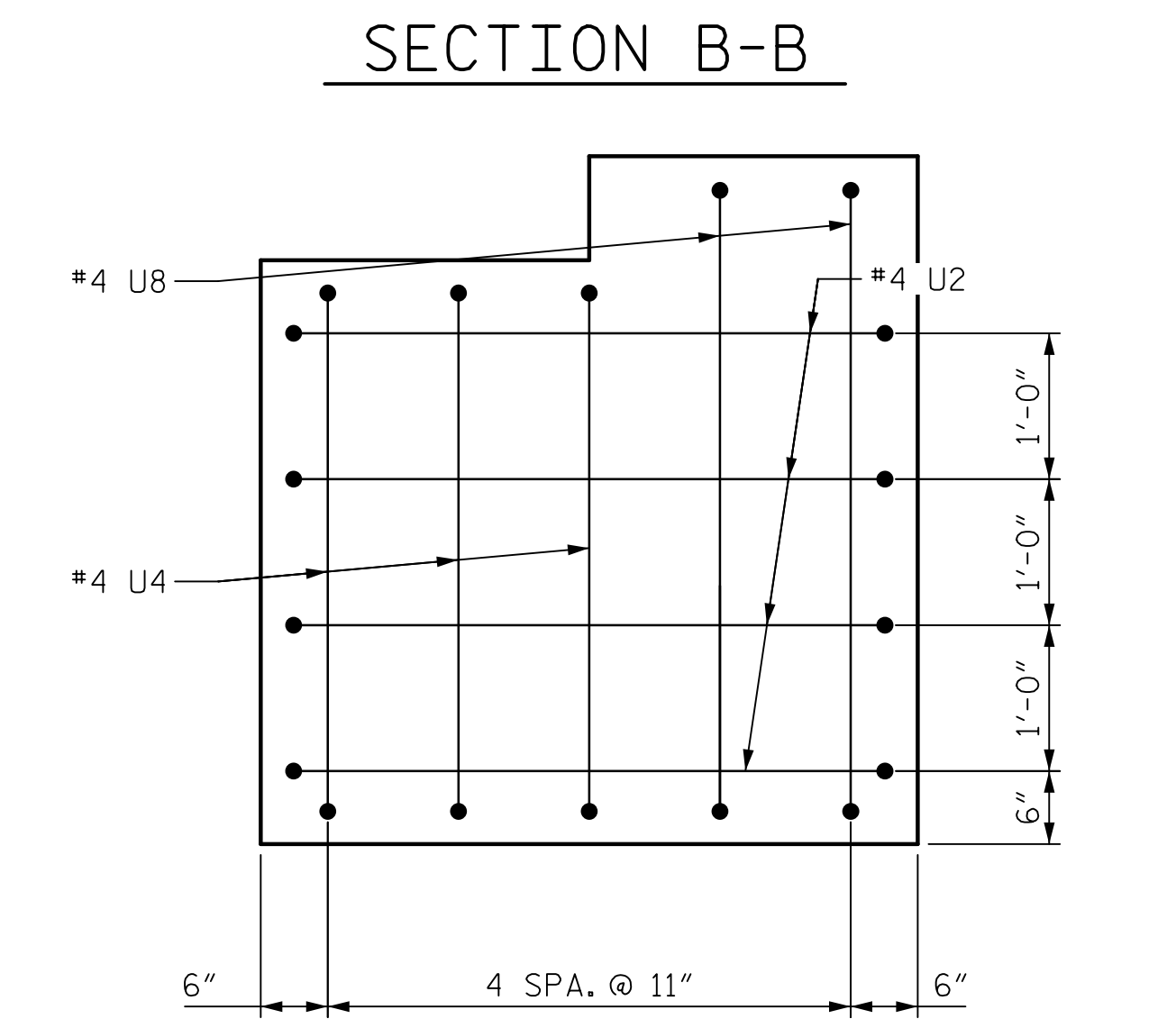
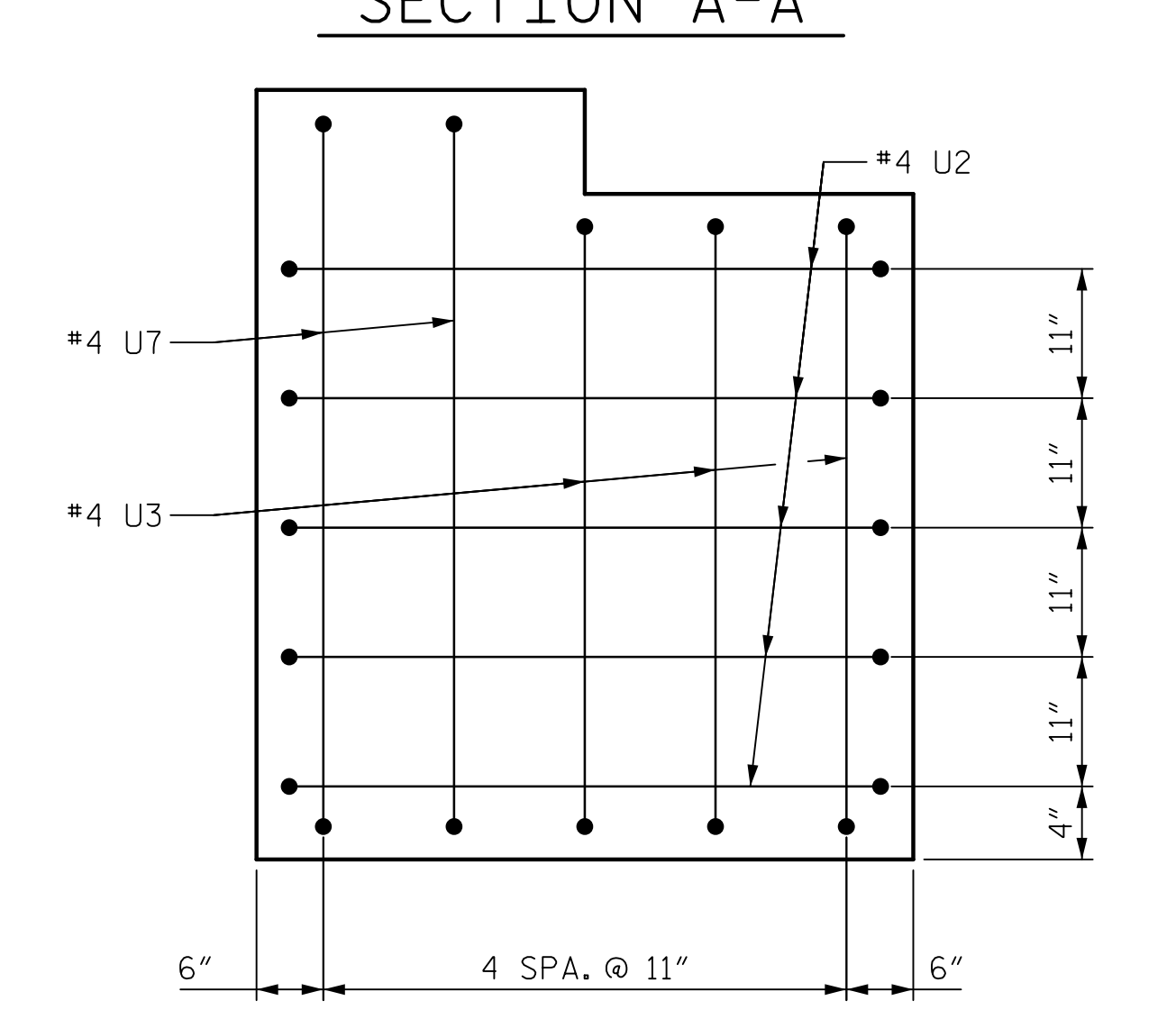
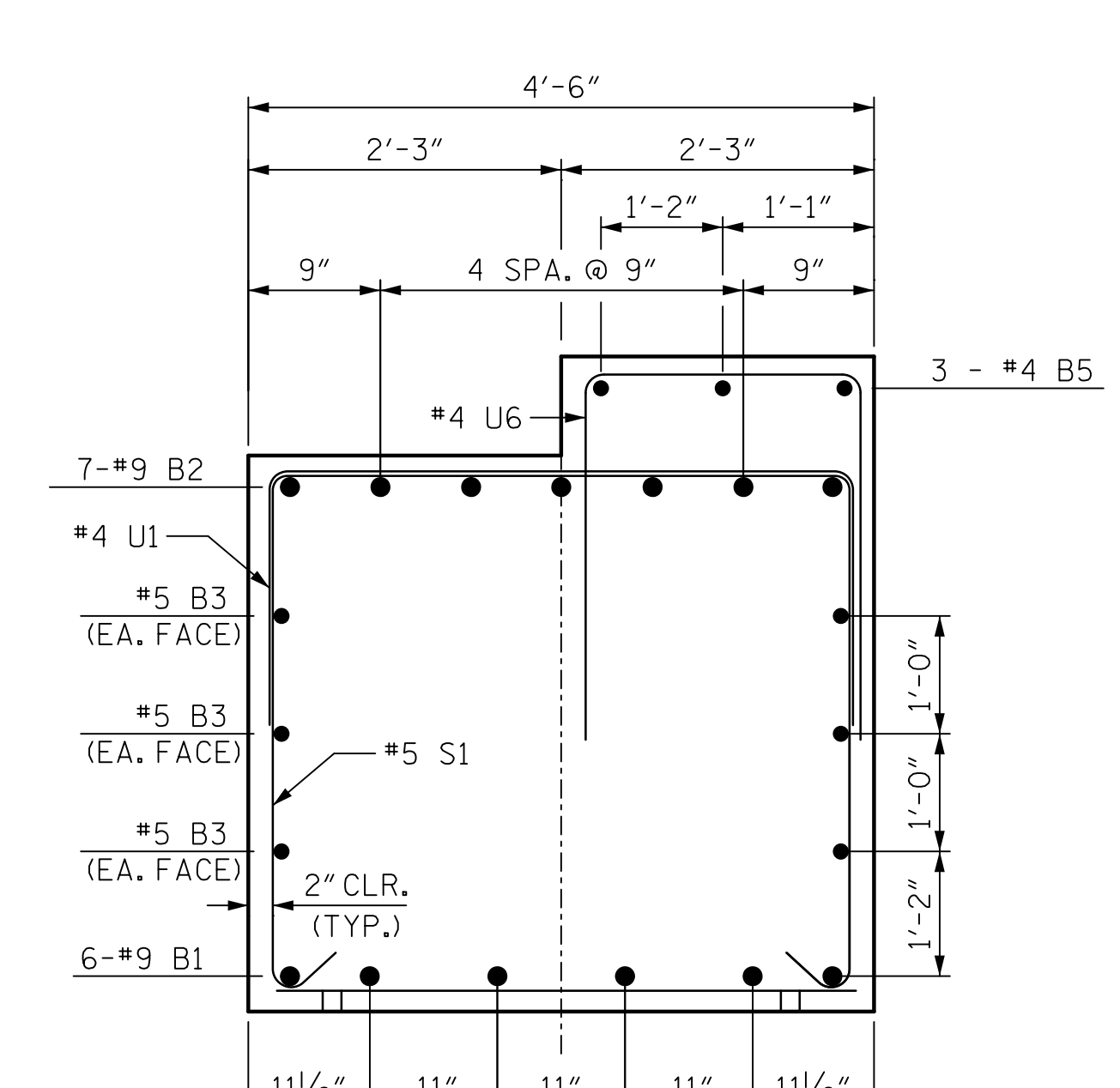
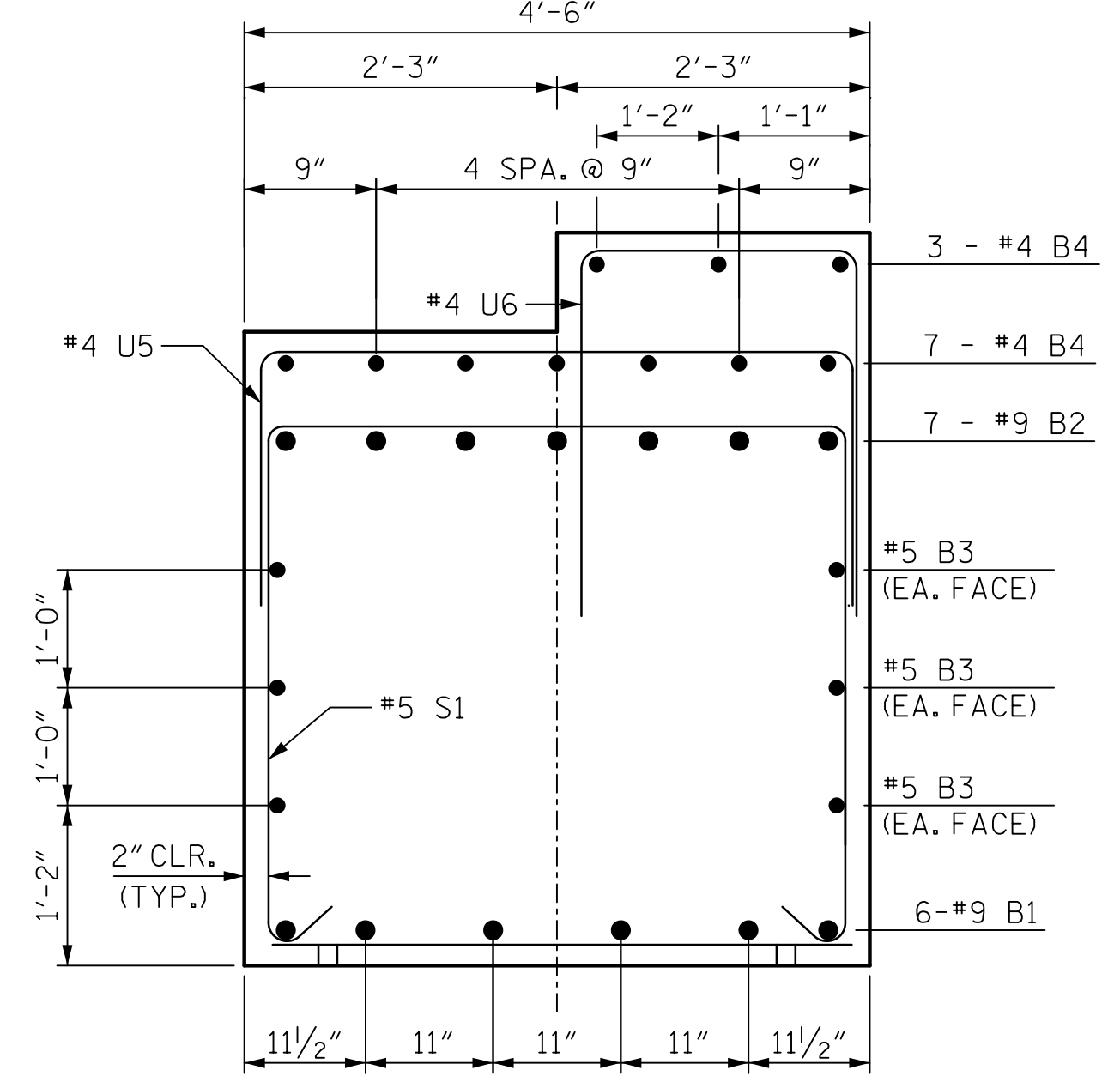
USER: c:\pwworking\autodesk\users\jmorrisson\dwg\142022\Drawings\04_Design\142022\142022-01.dwg
DRAWN BY: J. MORRISON
CHECKED BY: J. MORRISON
DESIGNED BY: B. LEROY
DESIGN CHECKED BY: J. MORRISON



BILL OF MATERIAL

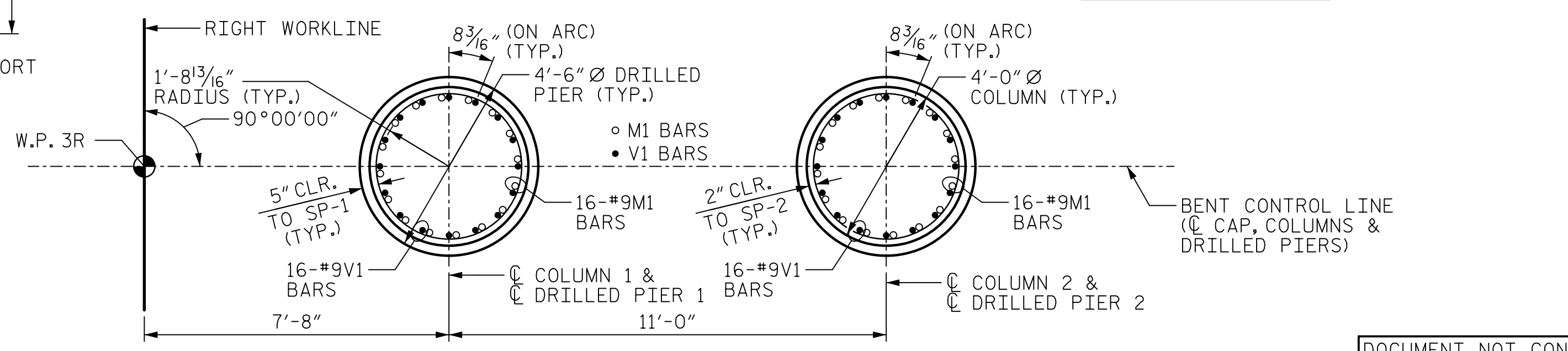
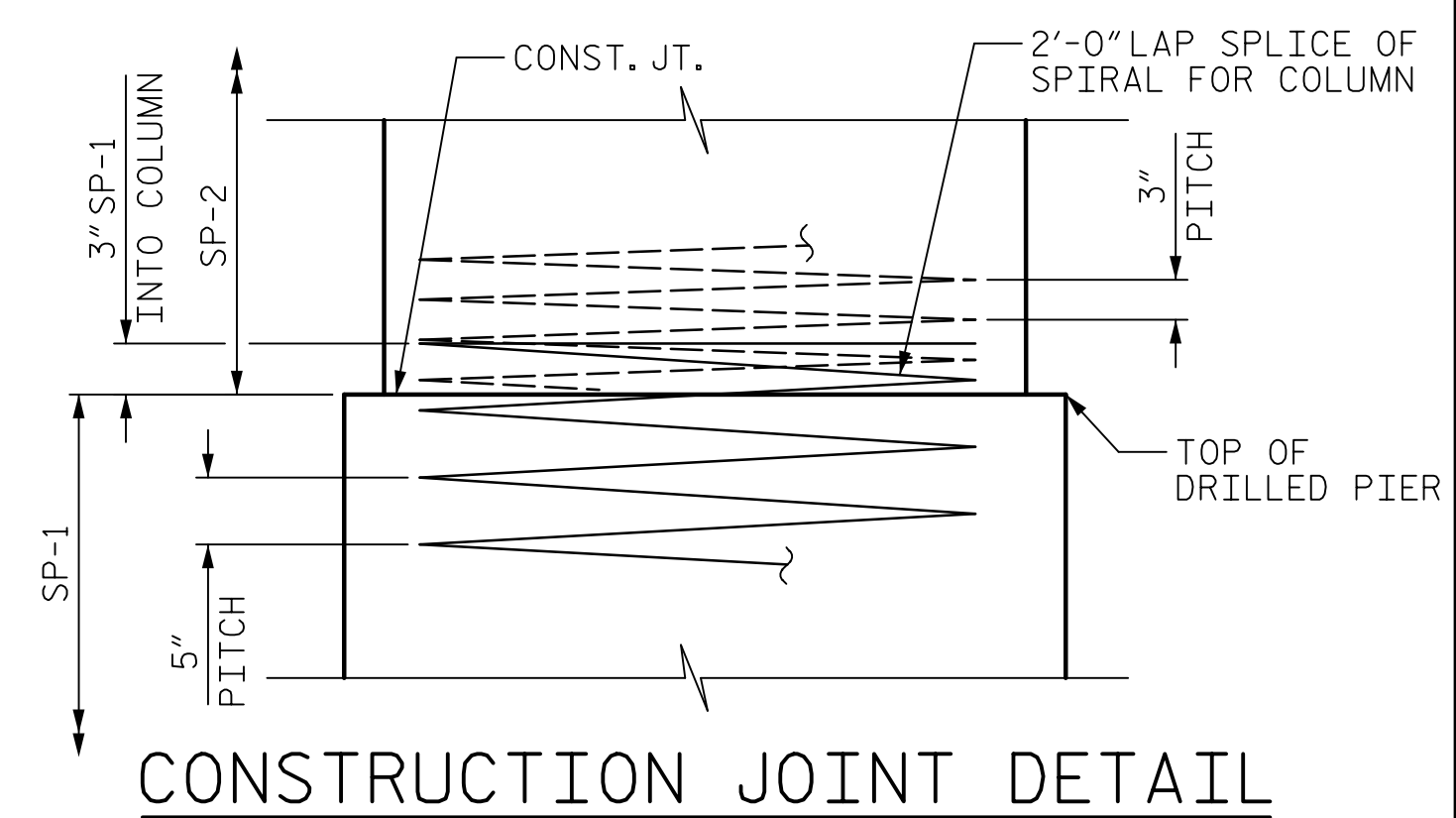
BENT 2

BAR	No.	SIZE	TYPE	LENGTH	WEIGHT
B1	6	9	STR	20'-8"	422
B2	7	9	3	23'-0"	547
B3	6	5	STR	20'-8"	129
B4	10	4	STR	4'-4"	29
B5	3	4	STR	16'-0"	32
M1	32	9	STR	41'-3"	4,488
V1	32	9	1	17'-3"	1,877
S1	23	5	2	12'-5"	298
U1	14	4	4	7'-4"	69
U2	9	4	4	7'-2"	43
U3	3	4	4	6'-9"	14
U4	3	4	4	6'-5"	13
U5	7	4	4	8'-4"	39
U6	27	4	4	6'-5"	116
U7	2	4	4	7'-6"	10
U8	2	4	4	7'-2"	10
SP-1	2	*	5	929'-4"	1,939
SP-2	2	*	6	665'-5"	889
REINFORCING STEEL				8,136	LBS.
SPIRAL COLUMN REINFORCING STEEL				2,828	LBS.
CLASS A CONCRETE BREAKDOWN					
POUR #2 (COLUMNS)				13.0	C.Y.
POUR #3 (CAP)				16.4	C.Y.
TOTAL CLASS A CONCRETE				29.4	C.Y.
DRILLED PIERS					
DRILLED PIER CONCRETE POUR 1 (DRILLED PIERS)				40.1	C.Y.



*THE "SP-1" SPIRAL REINFORCING STEEL SHALL BE W21 OR D-31 COLD DRAWN WIRE OR #5 PLAIN OR DEFORMED BAR.

*THE "SP-2" SPIRAL REINFORCING STEEL SHALL BE W20 OR D-20 COLD DRAWN WIRE OR #4 PLAIN OR DEFORMED BAR.



PROJECT NO. U-5748

WAKE COUNTY

STATION: 24+88.00 -L-

SHEET 2 OF 2

AECOM

STATE OF NORTH CAROLINA
DEPARTMENT OF TRANSPORTATION
RALEIGH

SUBSTRUCTURE
BENT 2
(NORTHBOUND LANES)

REVISIONS

NO.	BY:	DATE:	NO.	BY:	DATE:
1			3		
2			4		

SHEET NO. S1-42
TOTAL SHEETS 119

DocuSigned by: John C. Morrison
2/10/2023

DOCUMENT NOT CONSIDERED FINAL UNLESS ALL SIGNATURES COMPLETED