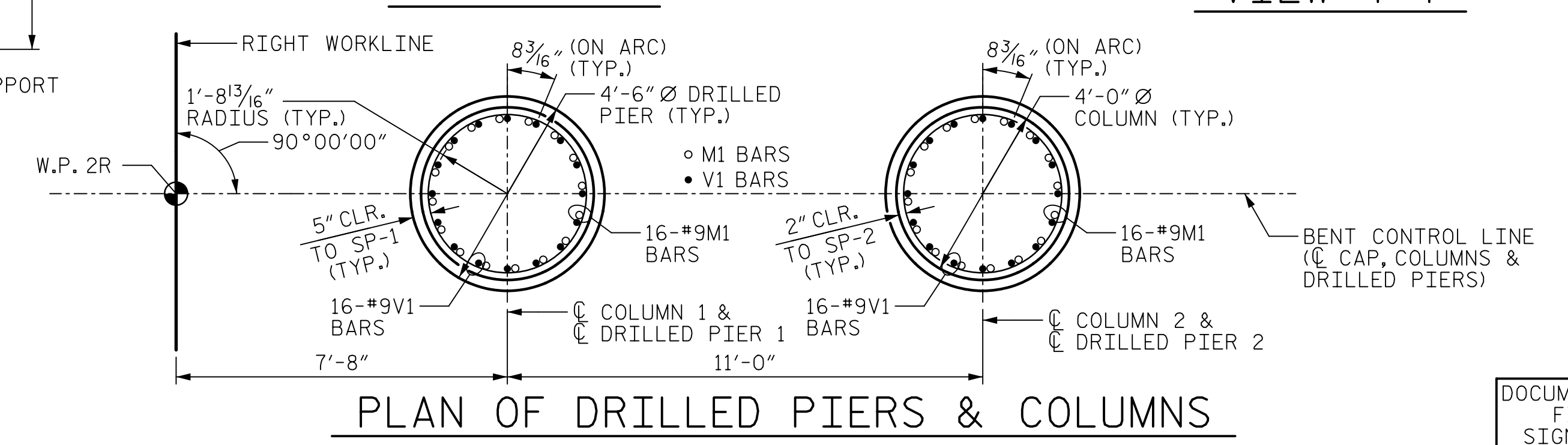
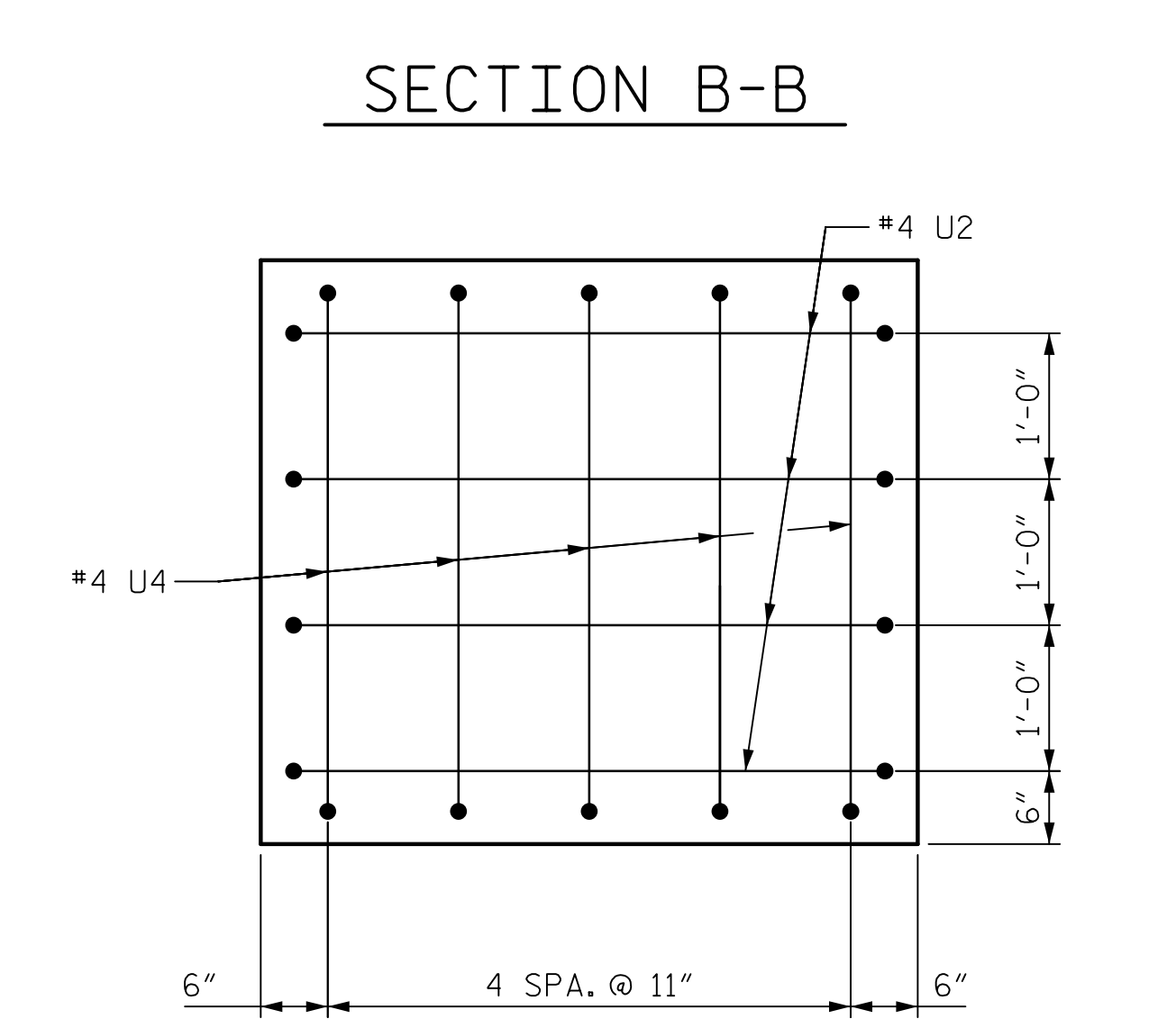
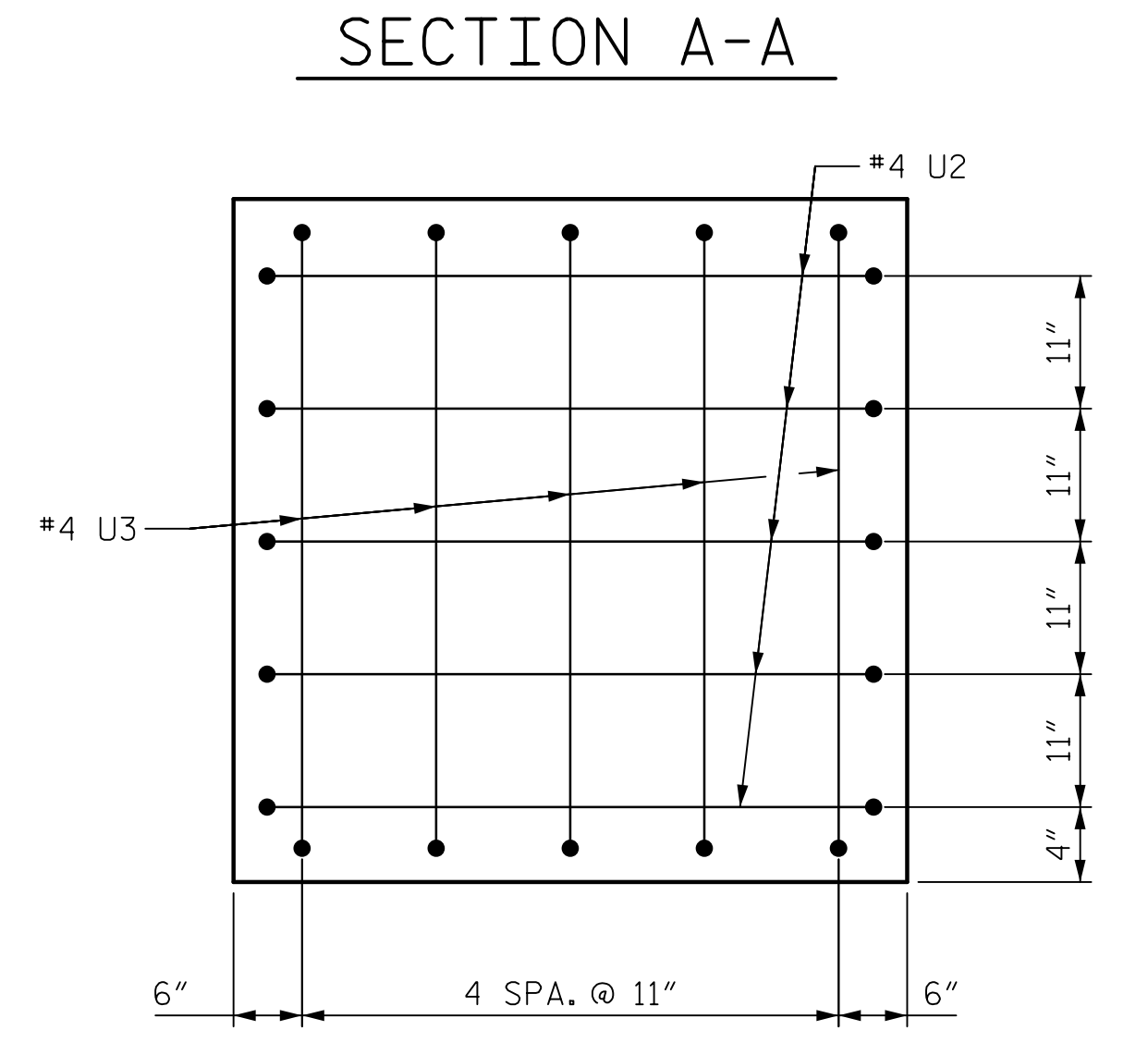
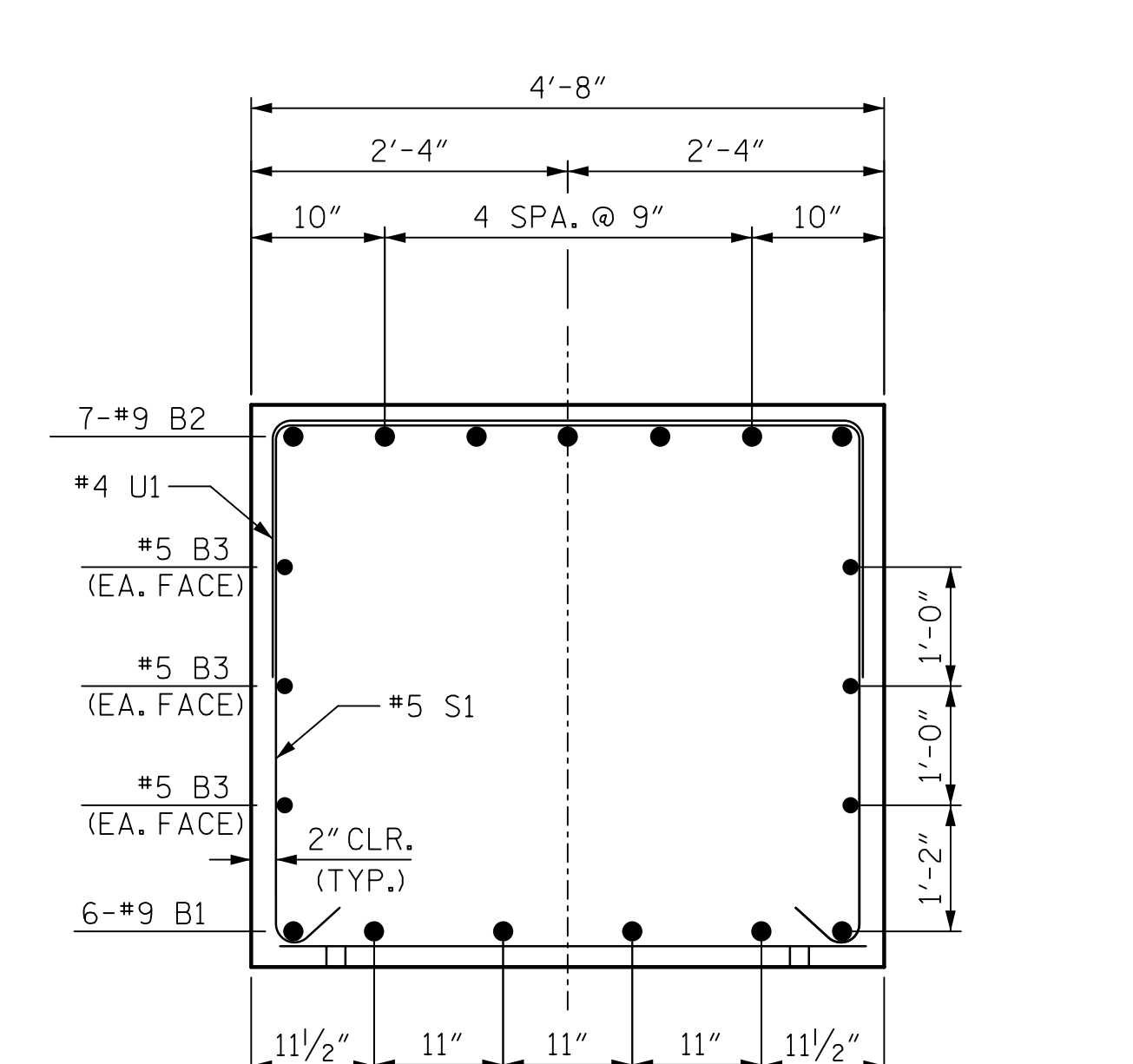
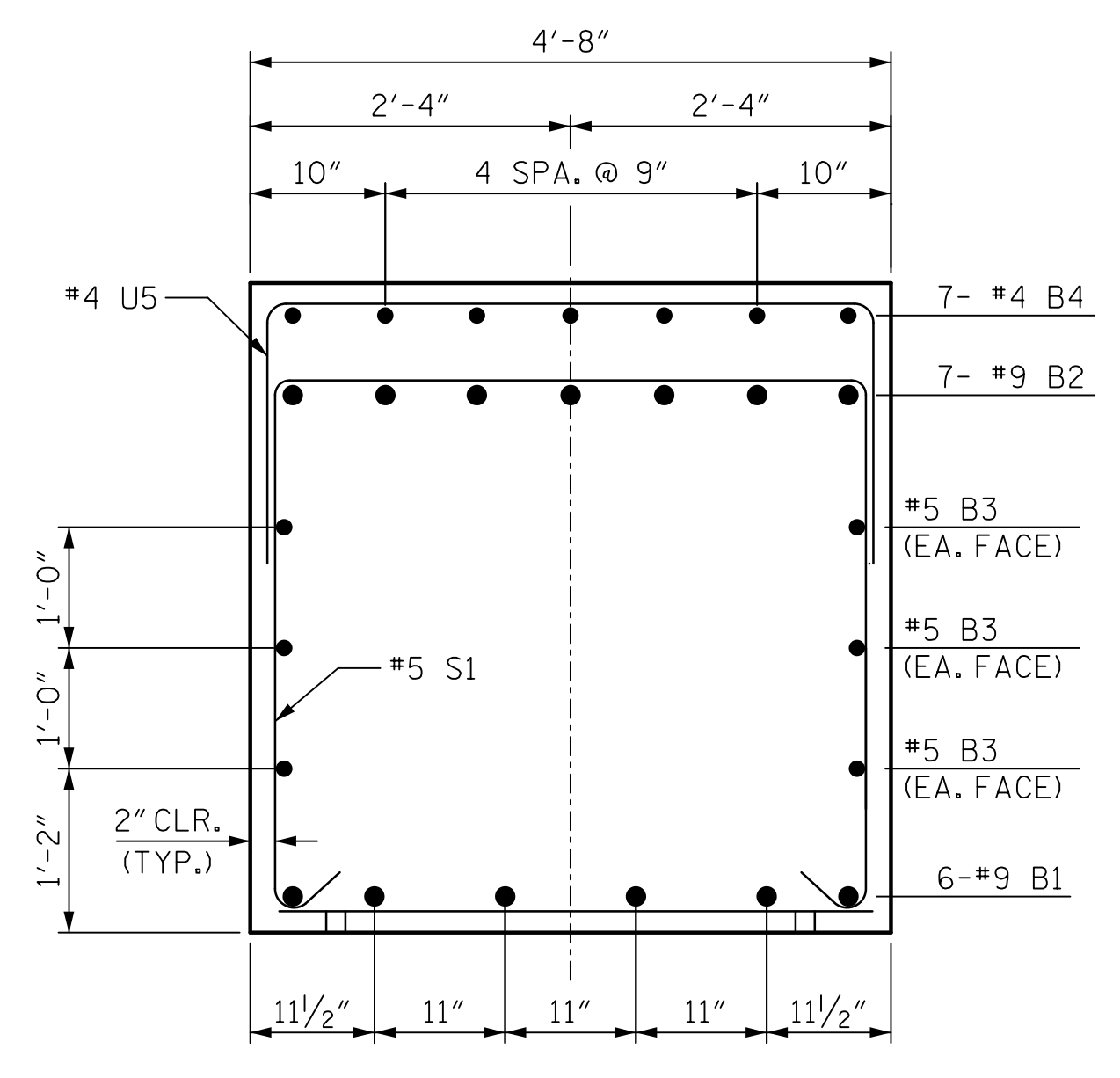
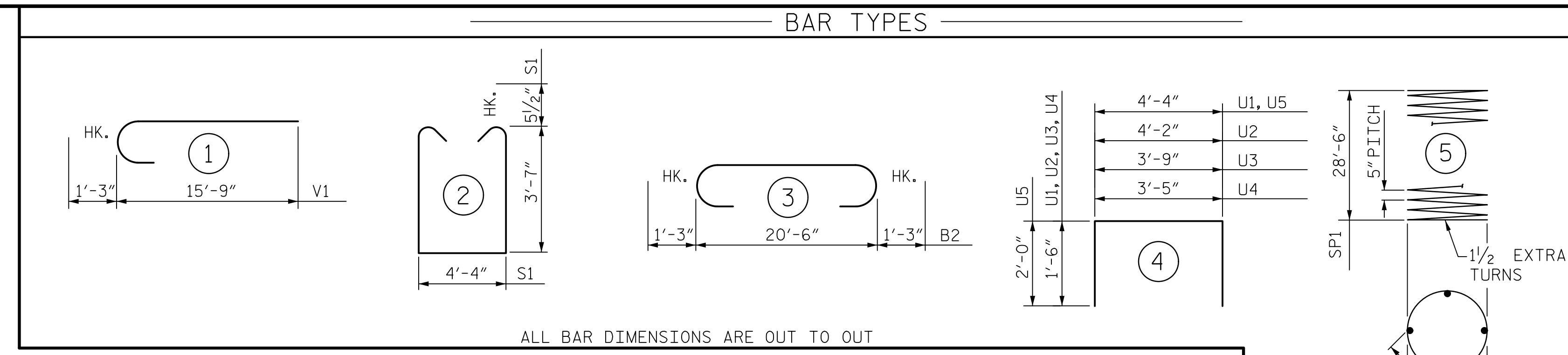
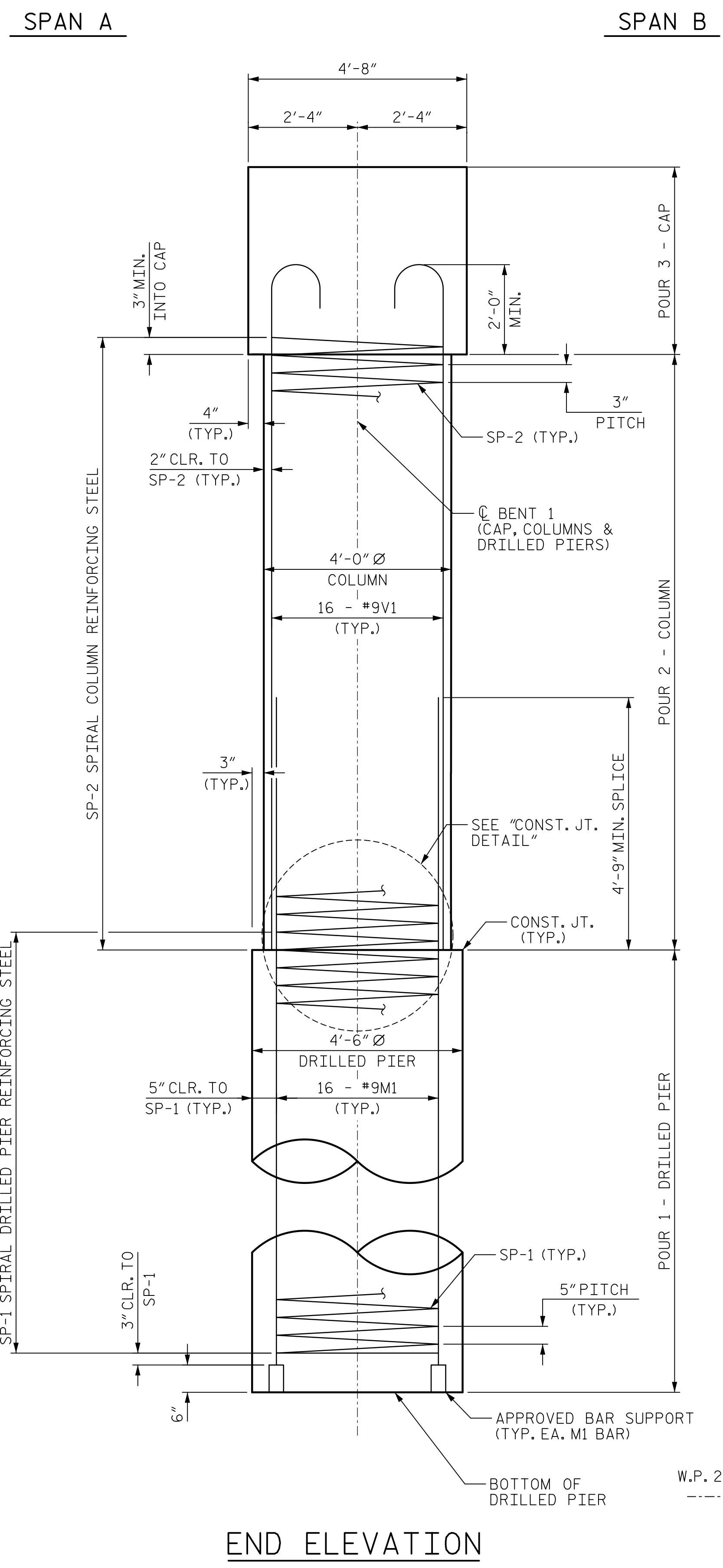
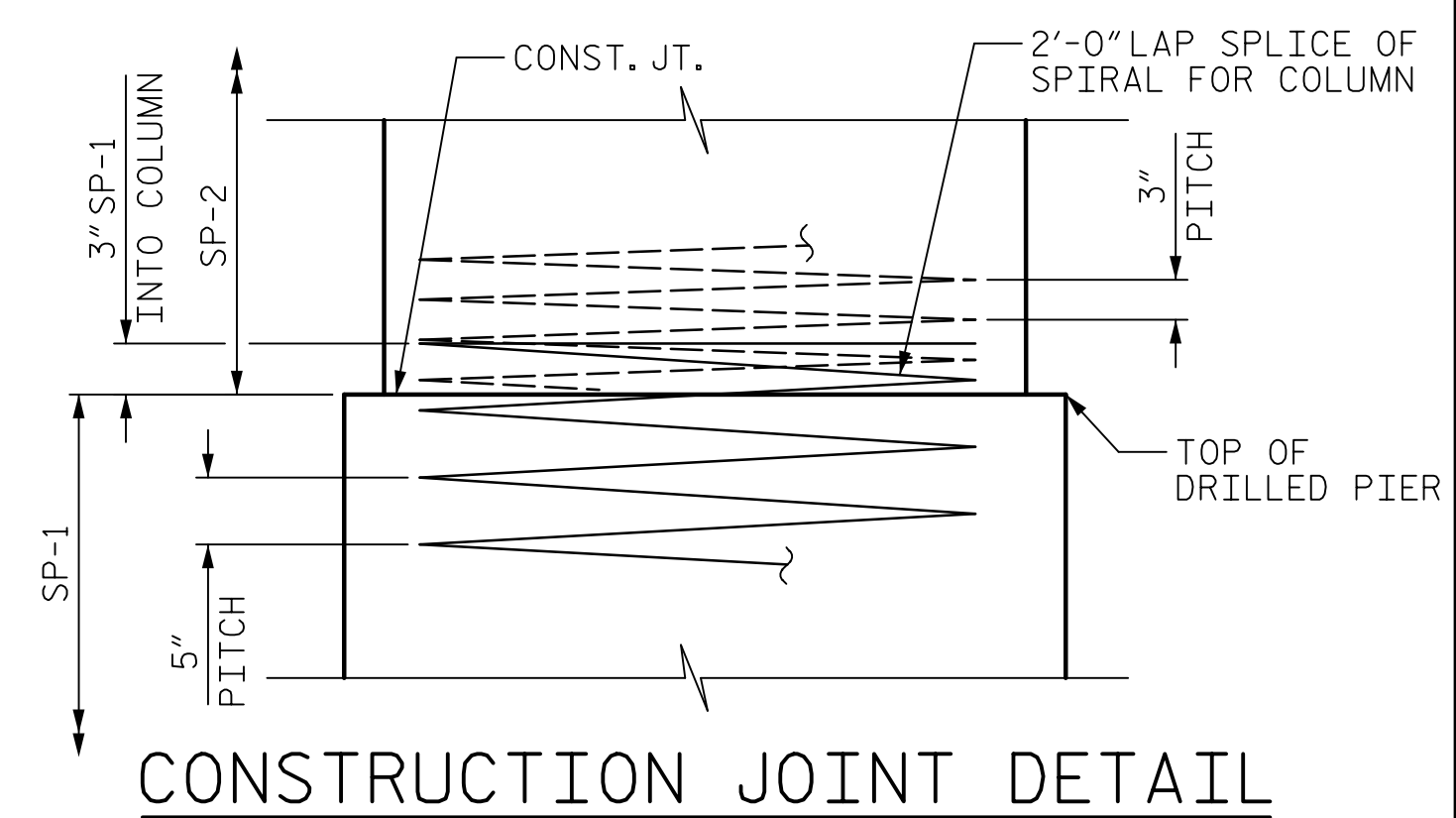


DATE: 2/9/2023 TIME: 12:40:58 PM
 USER: catter, pwj@aecom.com AECOM_DS21_MA_2020\Documents\60609754-U-5748 Ugon MIT900-CAD GIS\910-CAD\70_MCDOT-TIF\Structures\04 Drawings\01_01_LU-5748_SMU_B1_2_S1-40_S1021
 DGN: pwj@aecom.com



BILL OF MATERIAL					
BENT 1					
BAR	No.	SIZE	TYPE	LENGTH	WEIGHT
B1	6	9	STR	20'-8"	422
B2	7	9	3	23'-0"	547
B3	6	5	STR	20'-8"	129
B4	7	4	STR	4'-4"	20
M1	32	9	STR	36'-3"	3944
V1	32	9	1	17'-0"	1850
S1	23	5	2	12'-5"	298
U1	14	4	4	7'-4"	69
U2	9	4	4	7'-2"	43
U3	5	4	4	6'-9"	23
U4	5	4	4	6'-5"	21
U5	7	4	4	8'-4"	39
SP-1	2	**	5	793'-2"	1,655
SP-2	2	*	6	654'-1"	874
REINFORCING STEEL					7,405 LBS.
SPIRAL COLUMN REINFORCING STEEL					2,529 LBS.
CLASS A CONCRETE BREAKDOWN					
POUR #2 (COLUMNS)					12.8 C.Y.
POUR #3 (CAP)					15.0 C.Y.
TOTAL CLASS A CONCRETE					27.8 C.Y.
DRILLED PIERS					
DRILLED PIER CONCRETE POUR 1 (DRILLED PIERS)					34.2 C.Y.

*THE "SP-1" SPIRAL REINFORCING STEEL SHALL BE W21 OR D-31 COLD DRAWN WIRE OR #5 PLAIN OR DEFORMED BAR.
 *THE "SP-2" SPIRAL REINFORCING STEEL SHALL BE W20 OR D-20 COLD DRAWN WIRE OR #4 PLAIN OR DEFORMED BAR.



PROJECT NO. U-5748
 WAKE COUNTY
 STATION: 24+88.00 -L-

SHEET 2 OF 2

DRAWN BY : M. CATER DATE : 12/2022
 CHECKED BY : J. MORRISON DATE : 12/2022
 DESIGNED BY : B. LEROY DATE : 11/2022
 DESIGN CHECKED BY : J. MORRISON DATE : 11/2022

DOCUMENT NOT CONSIDERED FINAL UNLESS ALL SIGNATURES COMPLETED

AECOM
 AECOM TECHNICAL SERVICES OF NC, INC.
 5438 WADE PARK BOULEVARD, SUITE 200
 RALEIGH, NC 27607
 (919) 854-4200 www.aecom.com
 AECOM License No. F-0342

NORTH CAROLINA PROFESSIONAL ENGINEER
 SEAL 030474
 JOHN C. MORRISON

2/10/2023

STATE OF NORTH CAROLINA DEPARTMENT OF TRANSPORTATION RALEIGH					
SUBSTRUCTURE					
BENT 1 (NORTHBOUND LANES)					
REVISIONS					
NO.	BY:	DATE:	NO.	BY:	DATE:
1			3		
2			4		

SHEET NO. S1-40
 TOTAL SHEETS 119