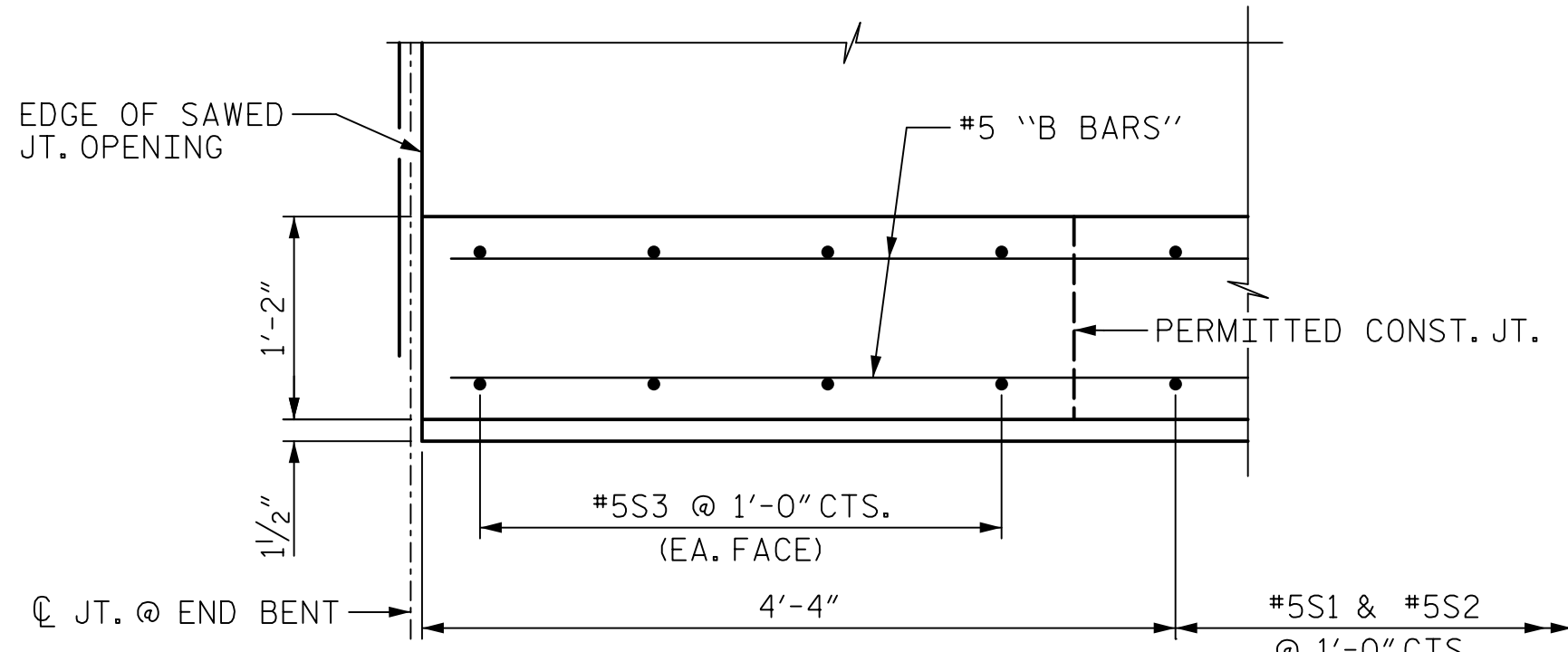
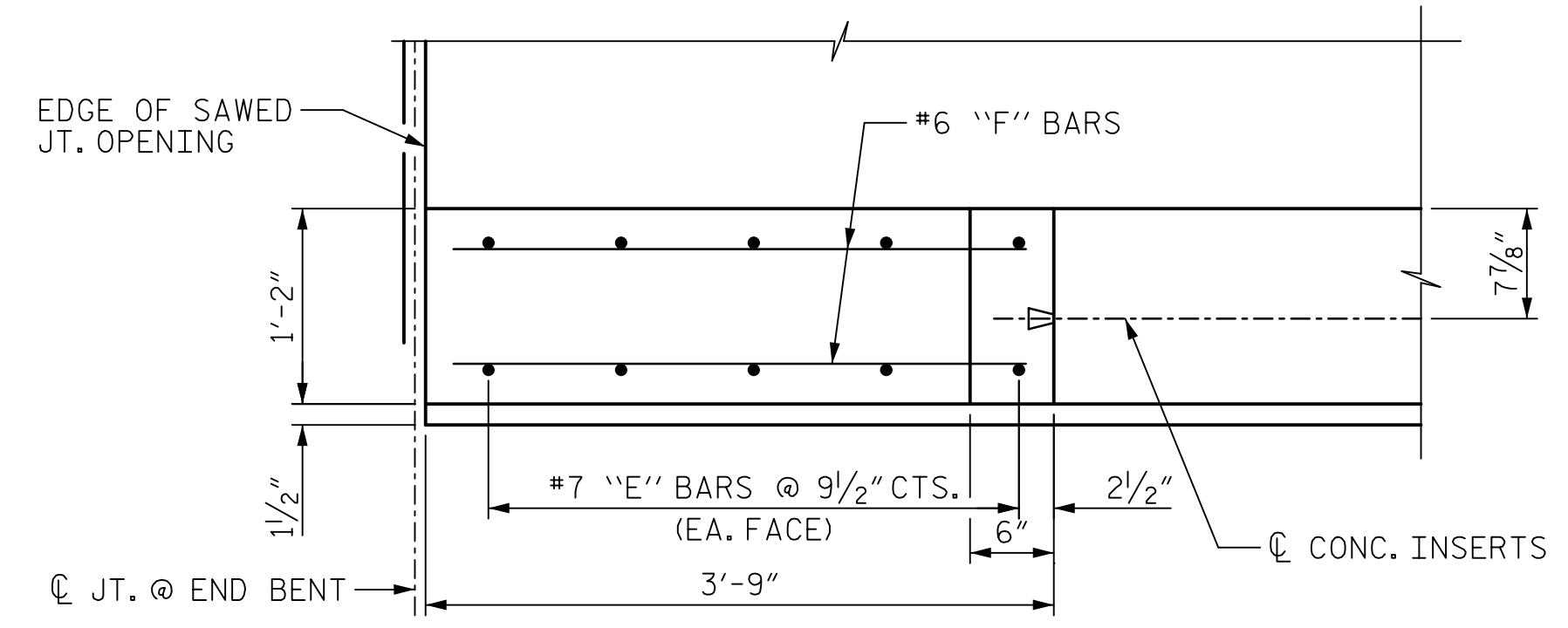


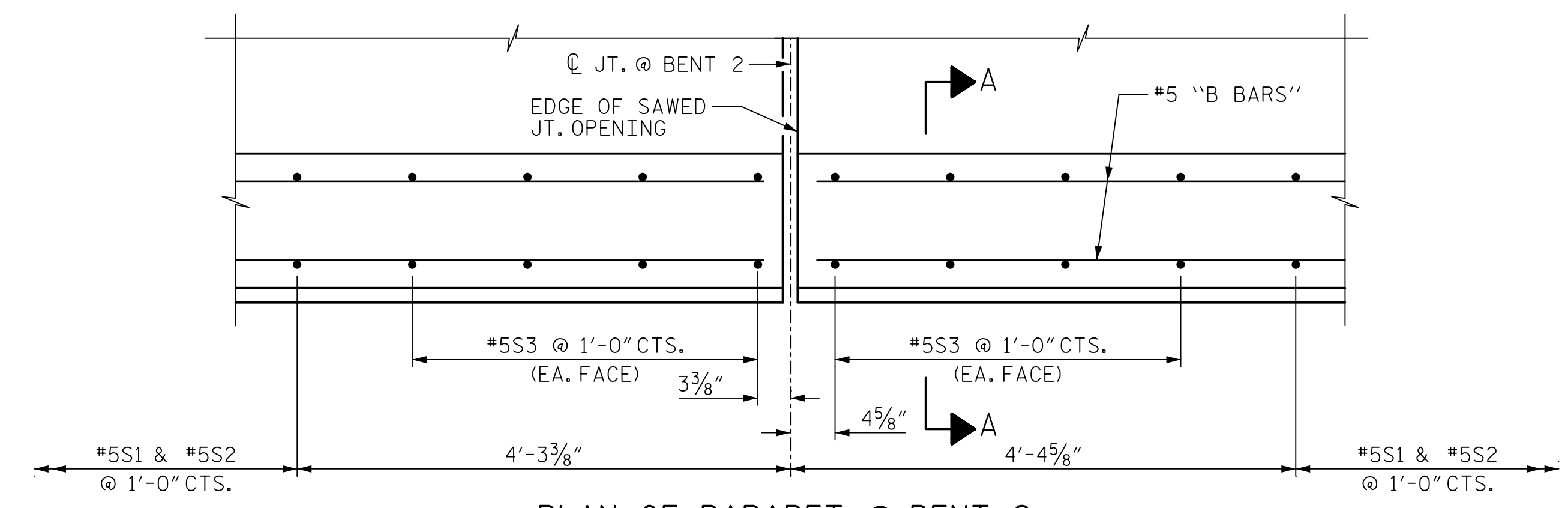
DATE: 2/10/2023
 TIME: 12:55:03 PM
 USER: c:\pwworking\john.c.morrison\My Documents\AECOM\2020\Documents\60609754-U-5748 Ugn MIT1900-CAD GIS\910-CAD\JO_MCDOT_TIF\Structures\04 Drawings\40_059-U-5748-SM1_LEF_S1-29_01(2).DWG
 P:\Users\john.c.morrison\My Documents\AECOM\2020\Documents\60609754-U-5748 Ugn MIT1900-CAD GIS\910-CAD\JO_MCDOT_TIF\Structures\04 Drawings\40_059-U-5748-SM1_LEF_S1-29_01(2).DWG



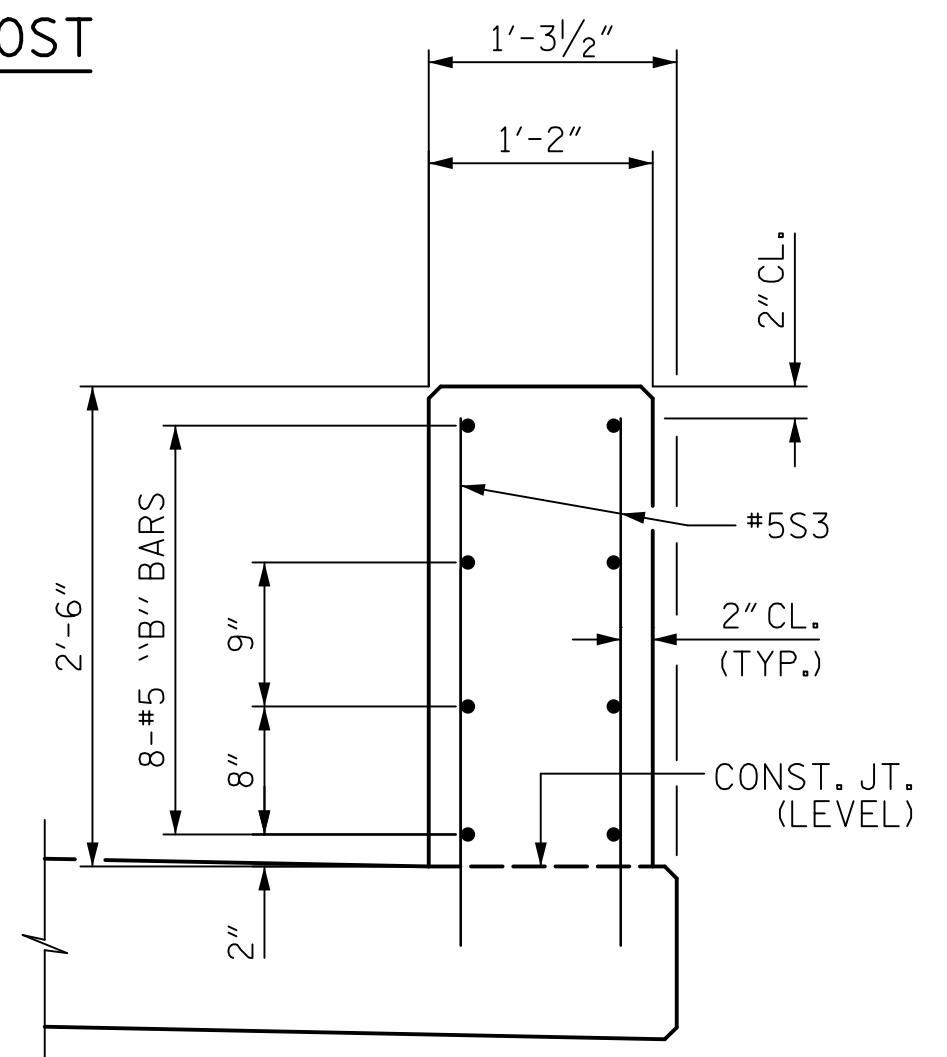
PLAN OF PARAPET @ END BENT



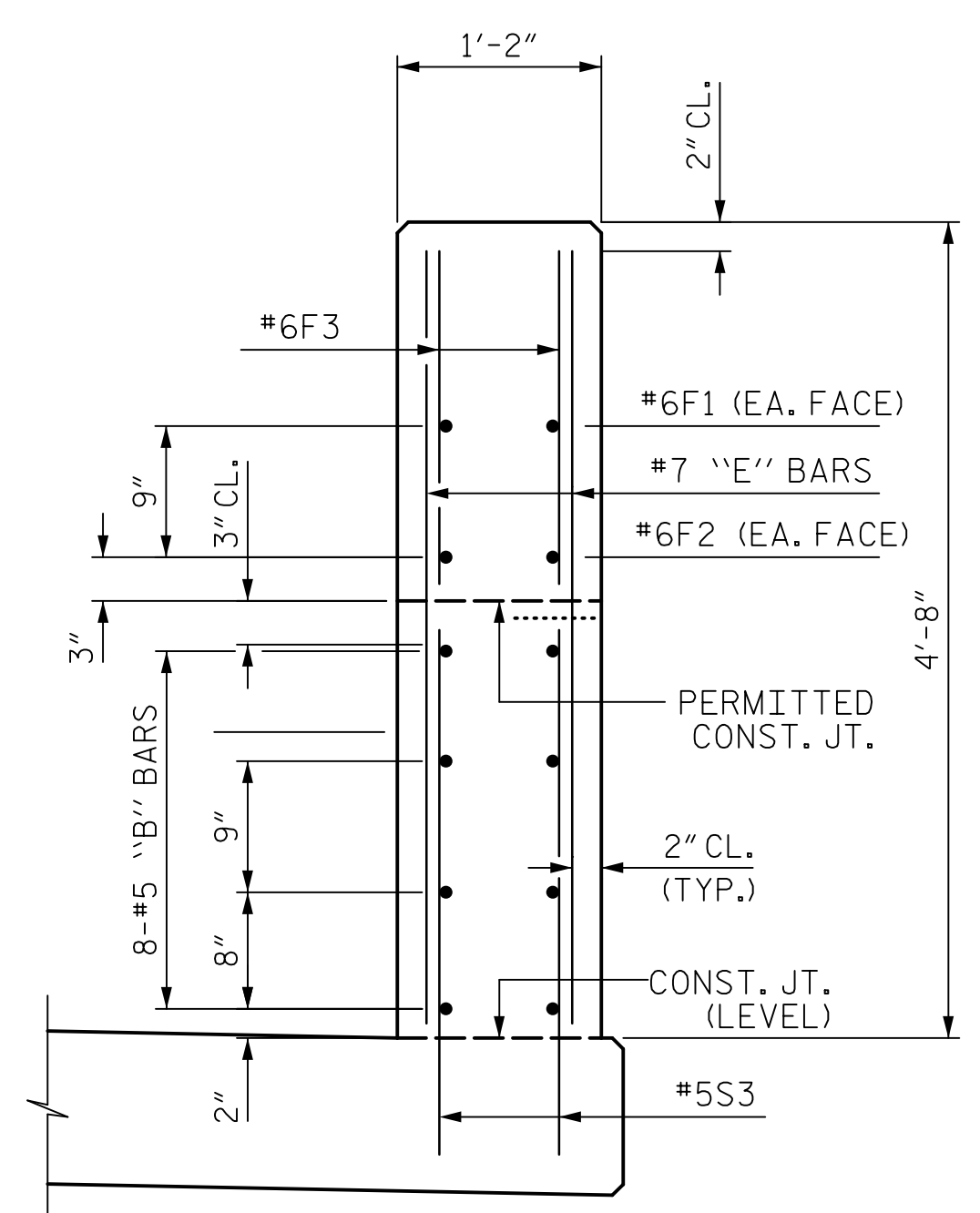
PLAN OF END POST



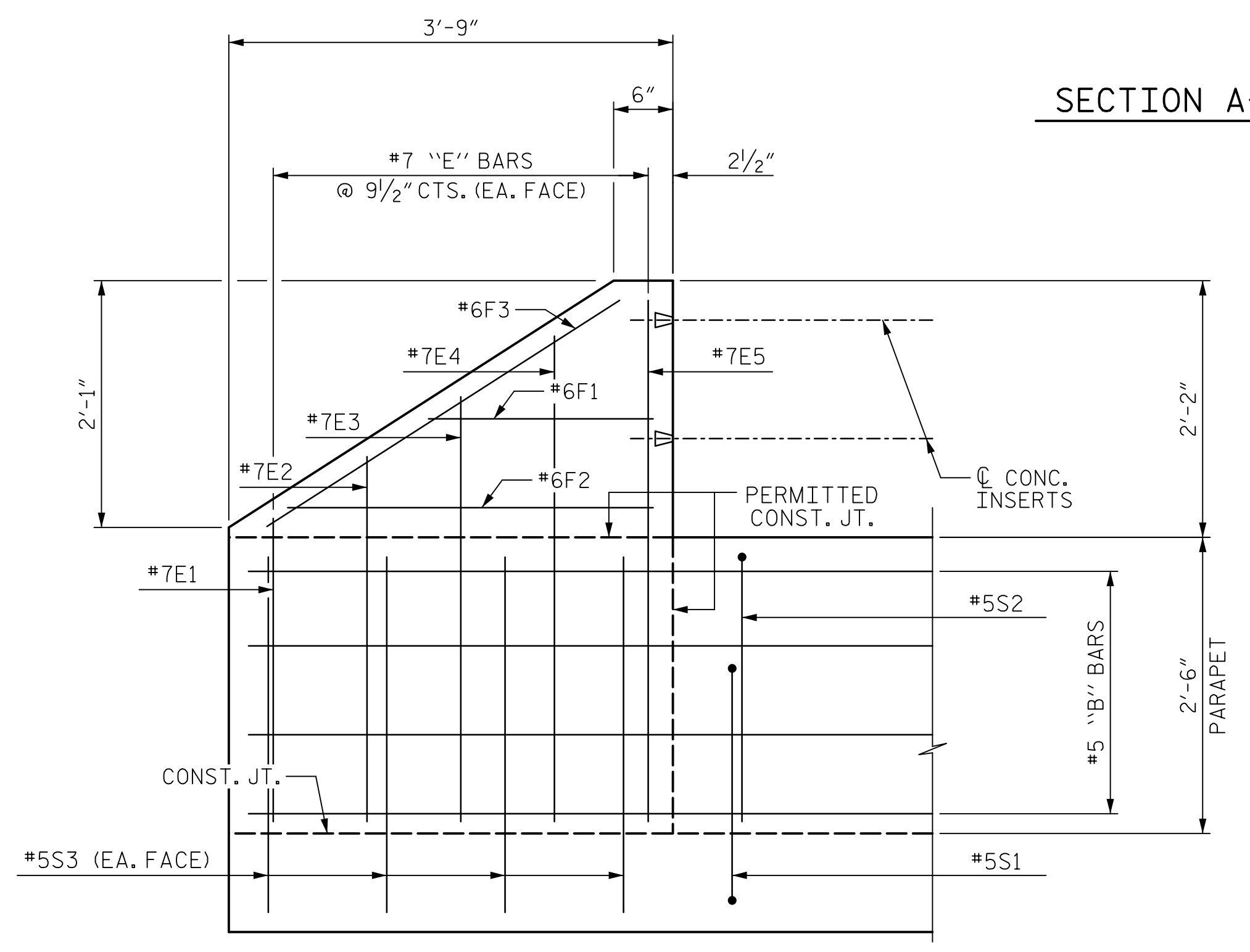
PLAN OF PARAPET @ BENT 2



SECTION A-A



END VIEW



ELEVATION

NOTES:

CONCRETE PARAPET IN A CONTINUOUS UNIT SHALL NOT BE CAST UNTIL ALL SLAB CONCRETE IN THAT UNIT HAS BEEN CAST AND HAS REACHED A MINIMUM COMPRESSIVE STRENGTH OF 3,000 PSI.

ALL REINFORCING STEEL IN PARAPETS AND END POSTS SHALL BE EPOXY COATED.

FOR DETAILS OF CONCRETE INSERTS IN END POSTS, SEE "RAIL POST SPACINGS AND END OF RAIL DETAILS" SHEET.

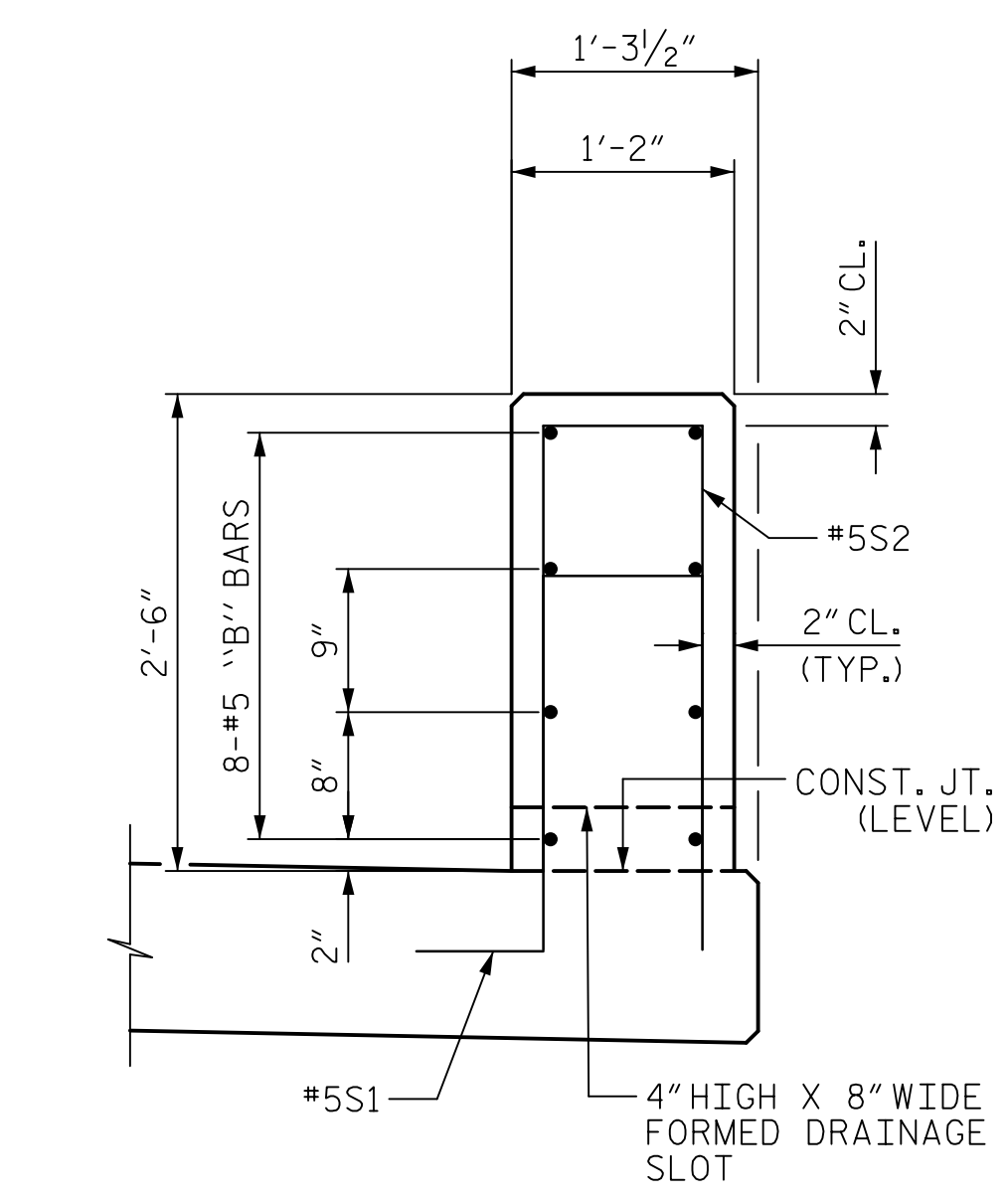
THE #5 S1 AND S2 BARS MAY BE SHIFTED SLIGHTLY IN ORDER TO MAINTAIN A 2" MIN. CLEARANCE TO THE 1/2" EXPANSION JOINT MATERIAL IN PARAPET.

GROOVED CONTRACTION JOINTS 1/2" IN DEPTH SHALL BE TOOLED IN ALL EXPOSED FACES OF THE PARAPET AND IN ACCORDANCE WITH ARTICLE 825-10(B) OF THE STANDARD SPECIFICATIONS. THE CONTRACTION JOINT SHALL BE LOCATED AT EACH THIRD POINT BETWEEN EXPANSION JOINTS. ONLY ONE CONTRACTION JOINT IS REQUIRED AT MIDPOINT OF PARAPET SEGMENTS LESS THAN 20 FEET IN LENGTH AND NO CONTRACTION JOINTS ARE REQUIRED FOR THOSE SEGMENTS LESS THAN 10 FEET IN LENGTH.

FOR DETAILS AND LOCATION OF GUARDRAIL ANCHORAGE ASSEMBLIES, SEE "GUARDRAIL ANCHORAGE DETAILS FOR METAL RAILS" SHEETS.

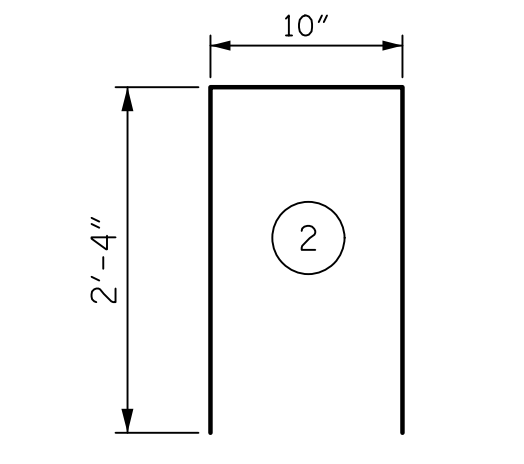
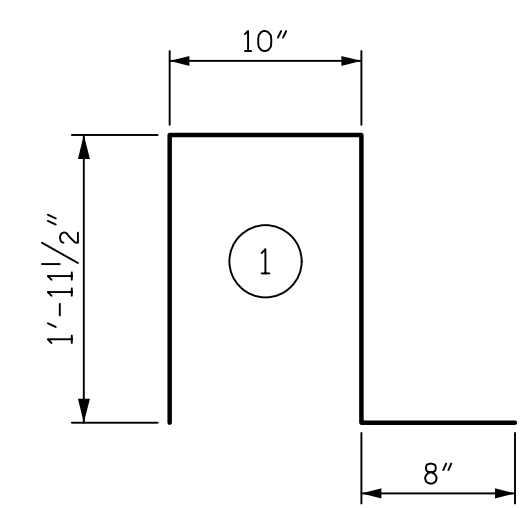
THE 8" WIDE X 4" HIGH FORMED DRAINAGE SLOTS MAY BE SHIFTED SLIGHTLY, AS NECESSARY, TO CLEAR THE 'S' BARS IN THE PARAPET.

THE #5 S3 BARS SHALL BE INSTALLED, USING AN ADHESIVE ANCHORING SYSTEM, AFTER SAWING THE JOINT. THE YIELD LOAD FOR THE #5 S3 BARS IS 18.6 KIPS. FIELD TESTING FOR THE ADHESIVE BONDING SYSTEM IS NOT REQUIRED.



SECTION THRU PARAPET

BAR TYPES



ALL BAR DIMENSIONS ARE OUT TO OUT

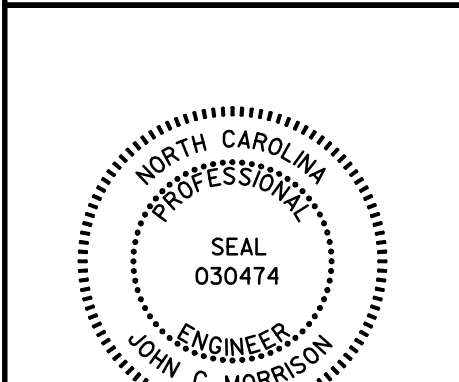
BILL OF MATERIAL

FOR CONCRETE PARAPET AND END POST ONLY

BAR	NO.	SIZE	TYPE	LENGTH	WEIGHT
* B1	8	#5	STR	12'-4"	103
* B2	48	#5	STR	25'-7"	1281
* B3	8	#5	STR	13'-5"	112
* B4	8	#5	STR	18'-11"	158
* B5	32	#5	STR	18'-7"	620
* B6	8	#5	STR	17'-11"	149
* E1	4	#7	STR	2'-6"	20
* E2	4	#7	STR	3'-0"	25
* E3	4	#7	STR	3'-6"	29
* E4	4	#7	STR	4'-0"	33
* E5	4	#7	STR	4'-4"	35
* F1	4	#6	STR	1'-9"	11
* F2	4	#6	STR	2'-11"	18
* F3	4	#6	STR	3'-9"	23
* S1	281	#5	1	5'-5"	1588
* S2	281	#5	2	5'-6"	1612
* S3	32	#5	STR	3'-0"	100

* EPOXY COATED REINFORCING STEEL	5,917 LBS.
CLASS AA CONCRETE	32.7 CU. YDS.
2'-6" CONCRETE PARAPET	296.33 LIN. FT.

PROJECT NO. U-5748
 WAKE COUNTY
 STATION: 24+88.00 -L-



STATE OF NORTH CAROLINA
 DEPARTMENT OF TRANSPORTATION
 RALEIGH
 SUPERSTRUCTURE
 CONCRETE PARAPET & END POST DETAILS
 (NORTHBOUND LANES)

REVISIONS						SHEET NO.
NO.	BY:	DATE:	NO.	BY:	DATE:	
1			3			TOTAL SHEETS
2			4			119

DOCUMENT NOT CONSIDERED FINAL UNLESS ALL SIGNATURES COMPLETED

DocuSigned by: John C. Morrison 2/10/2023

DRAWN BY : D.R. DRUM DATE : 06/2021
 CHECKED BY : J.C. MORRISON DATE : 06/2021
 DESIGNED BY : D.R. DRUM DATE : 06/2021
 DESIGN CHECKED BY : J.C. MORRISON DATE : 06/2021