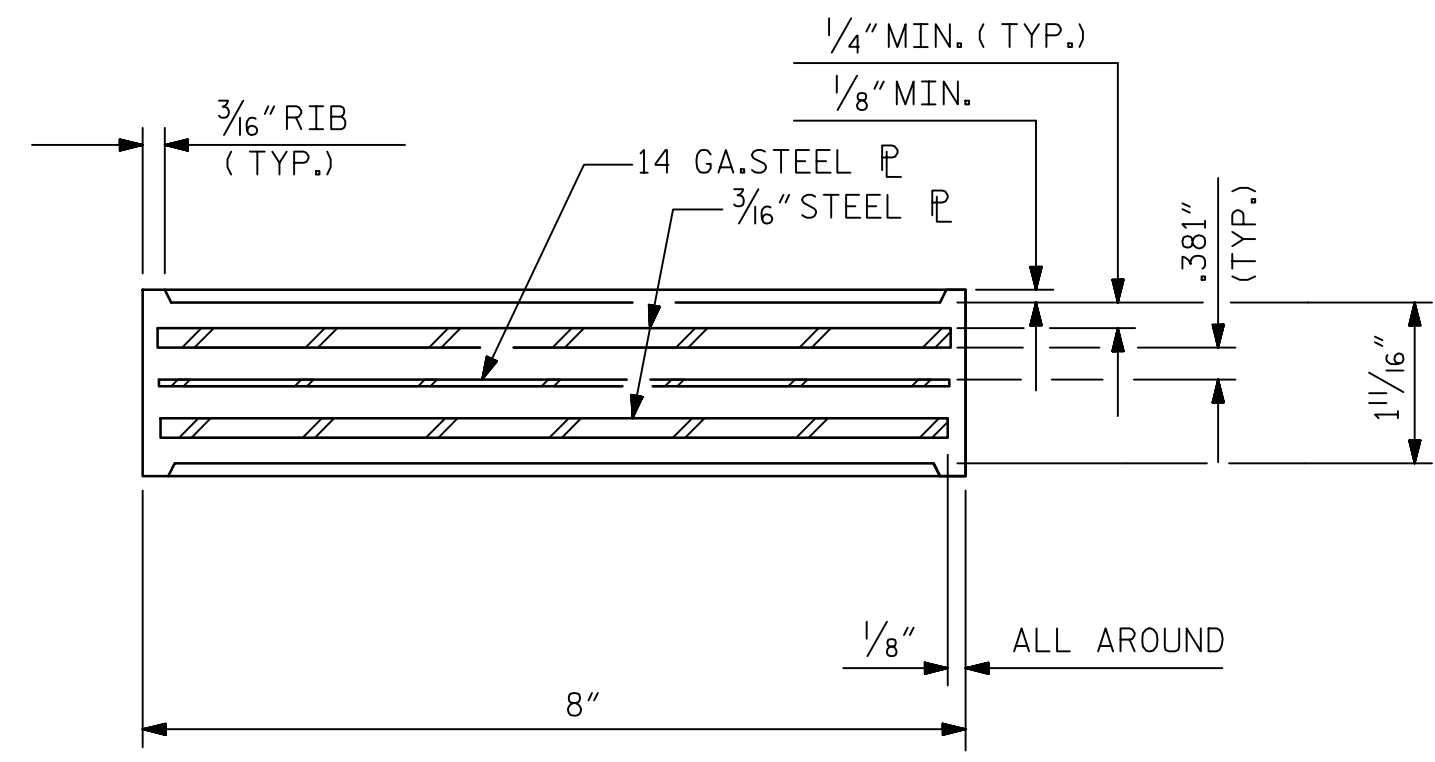
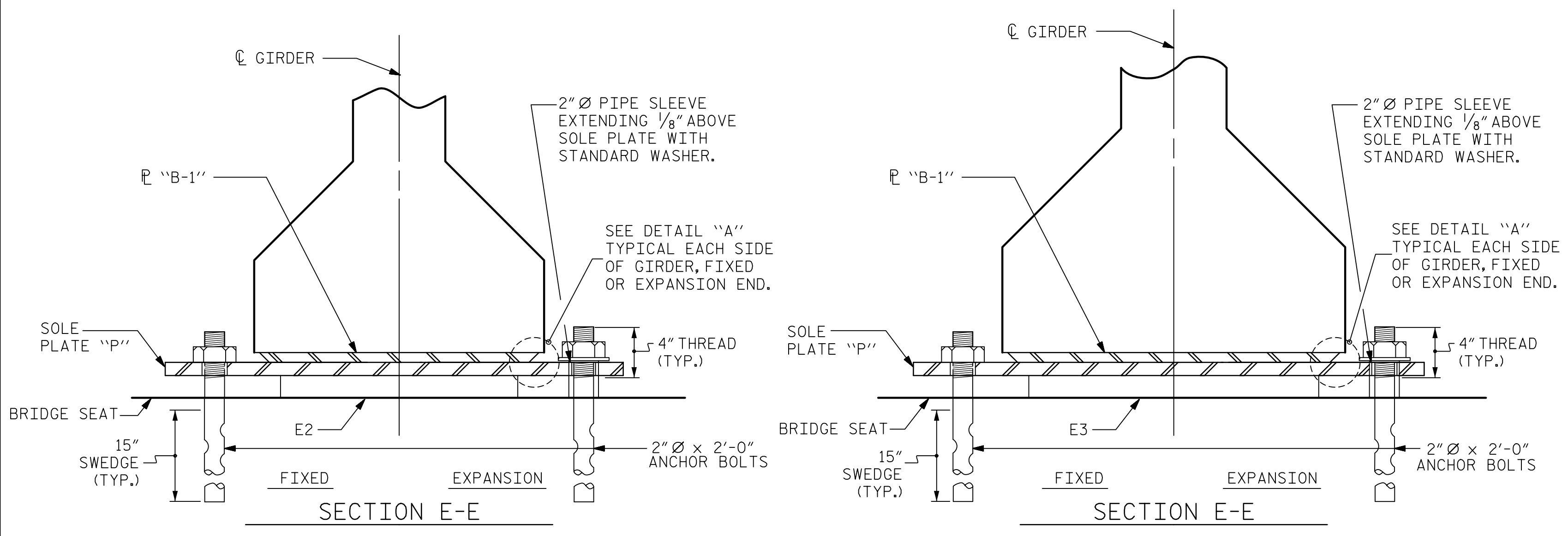
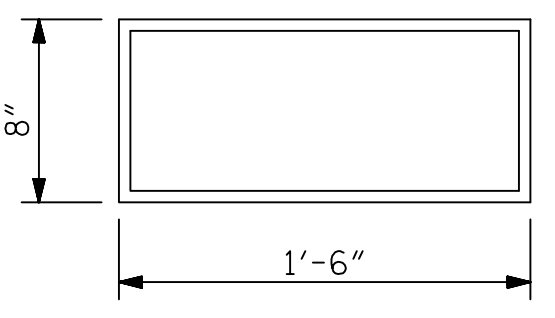


DATE: 2/10/2023 TIME: 12:36:32 PM
USER: jmorriso - pw: jmorriso@aecom.com AECOM_DS21_MLA_2020\Drawings\60609754-U-5748 Uprn_MIT000-CAD GIS\910_CAD\70_MCDOT_TIF\Structures\04 Drawings\401_053_U-5748_S1U_LB6_S1-06_910\021



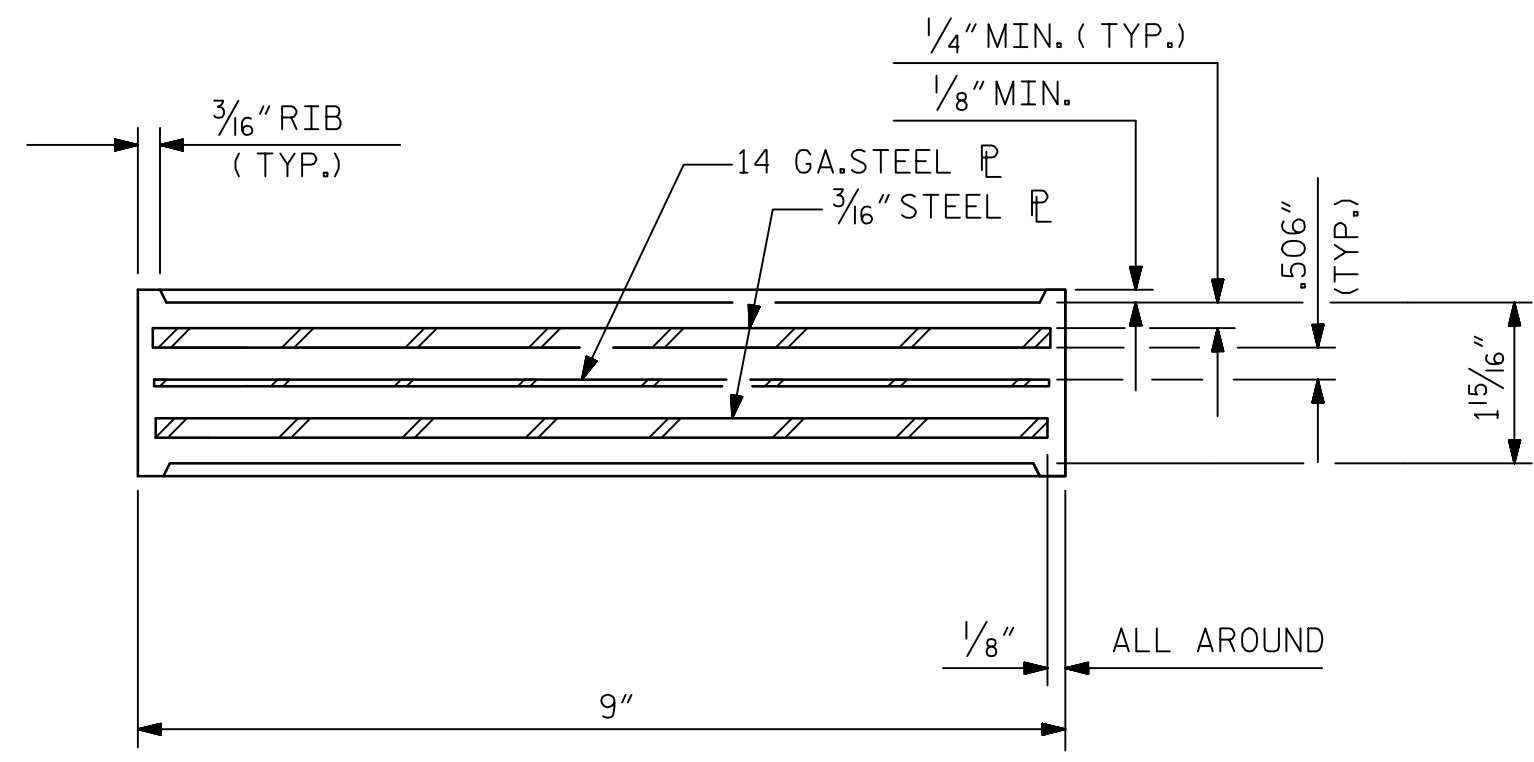
TYPICAL SECTION OF ELASTOMERIC BEARINGS



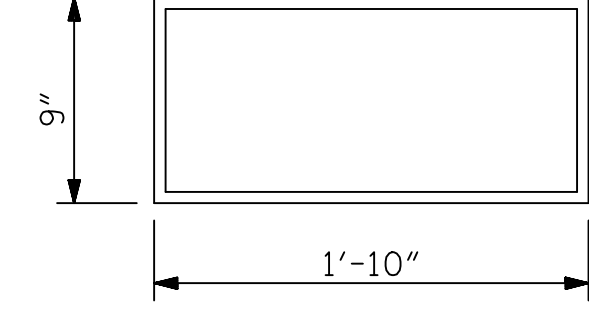
E2 (12 REQ'D)

PLAN VIEW OF ELASTOMERIC BEARING

TYPE III



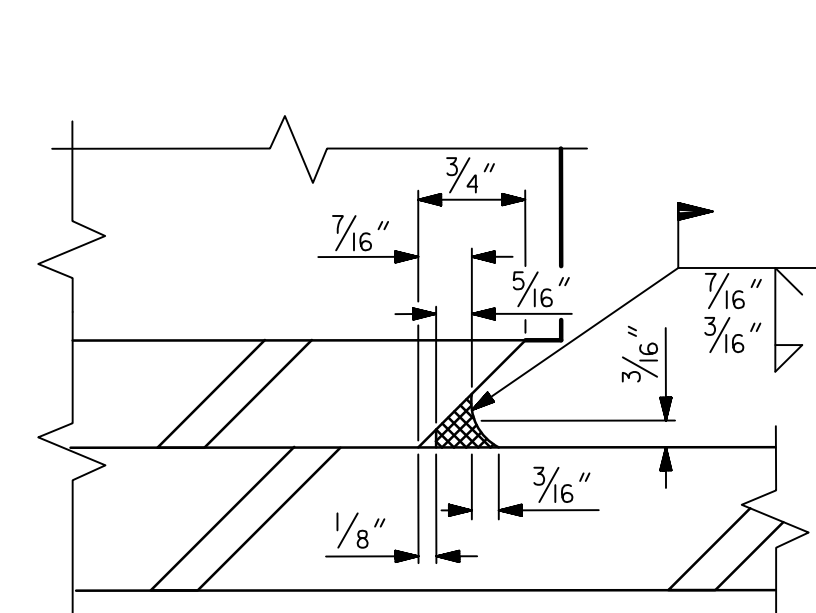
TYPICAL SECTION OF ELASTOMERIC BEARINGS



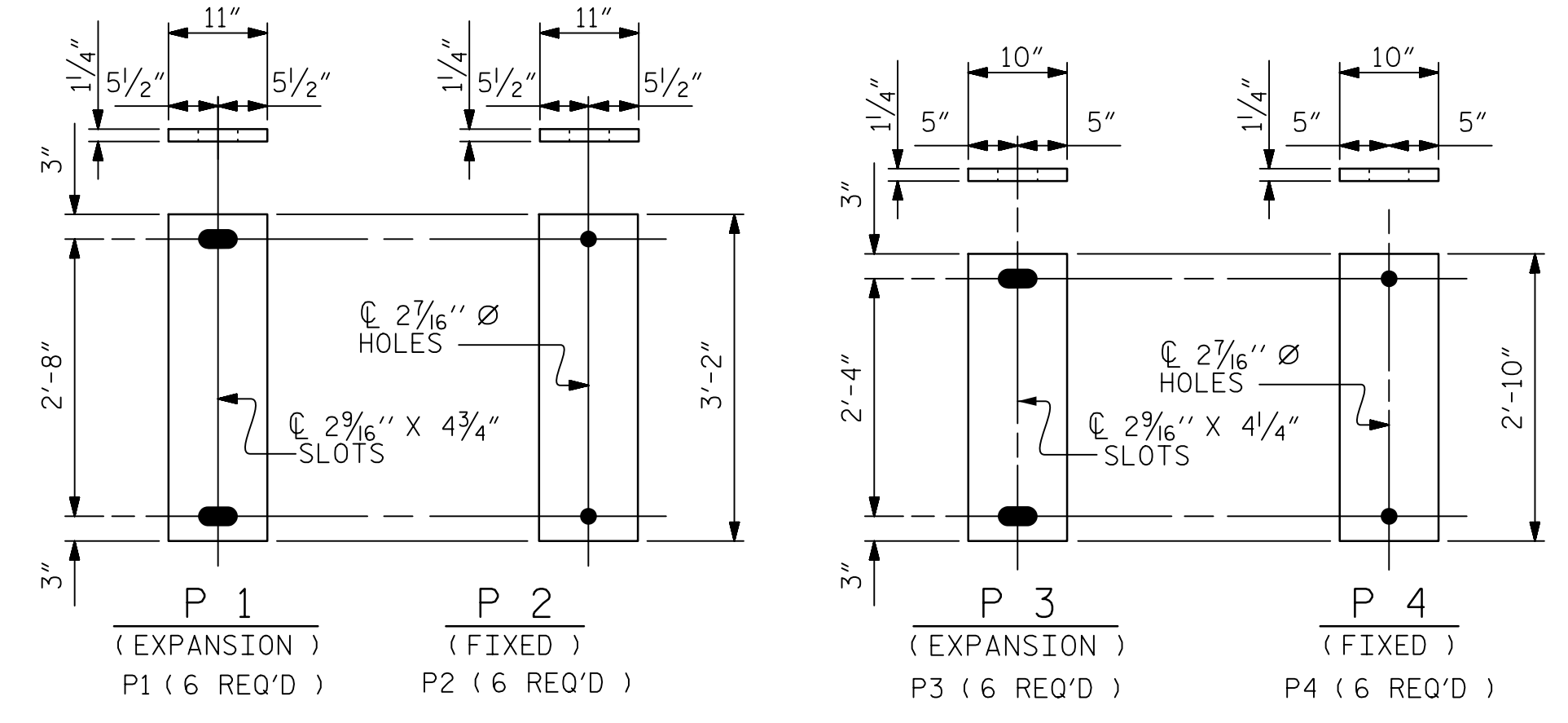
E3 (12 REQ'D)

PLAN VIEW OF ELASTOMERIC BEARING

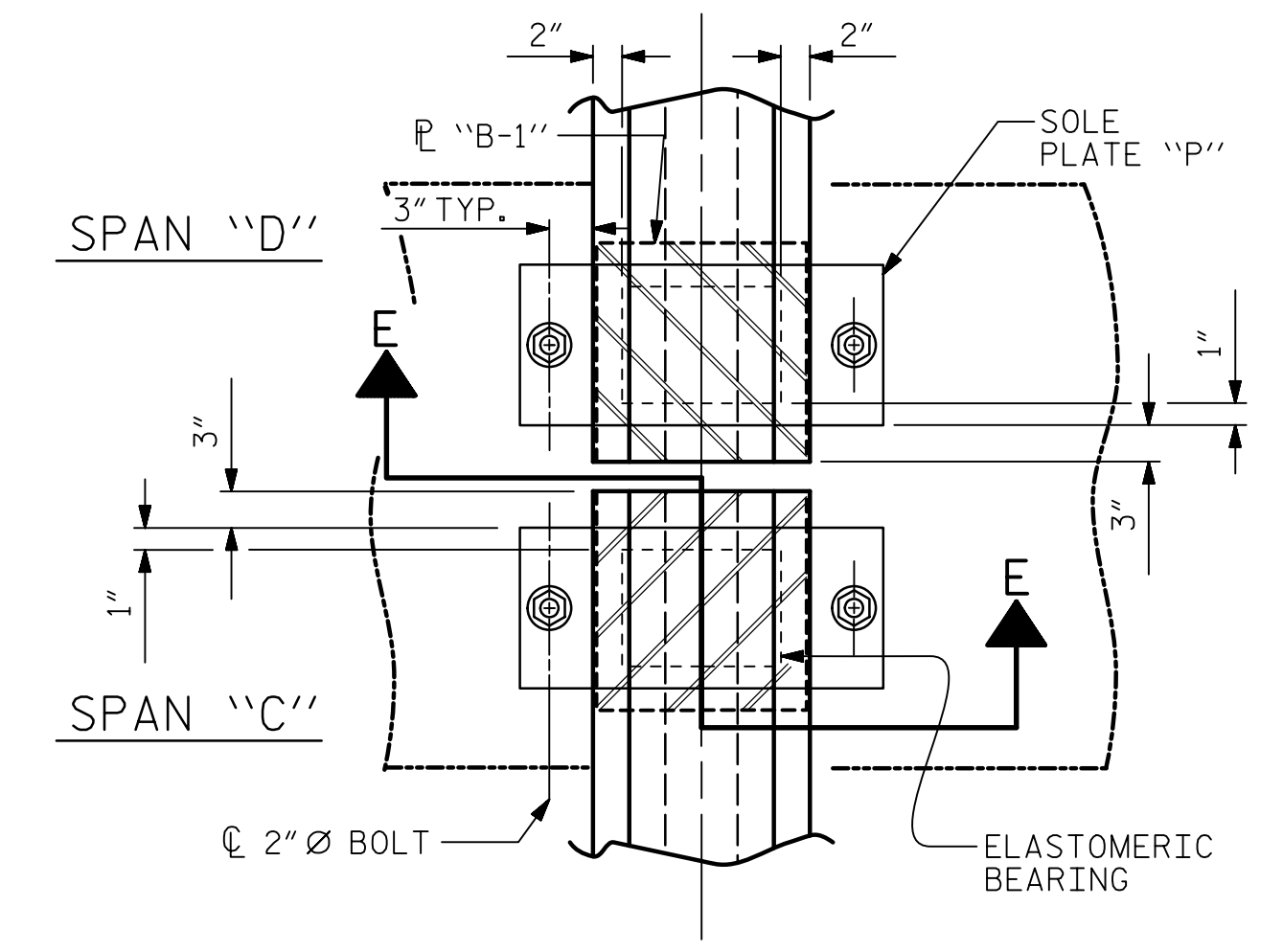
TYPE IV



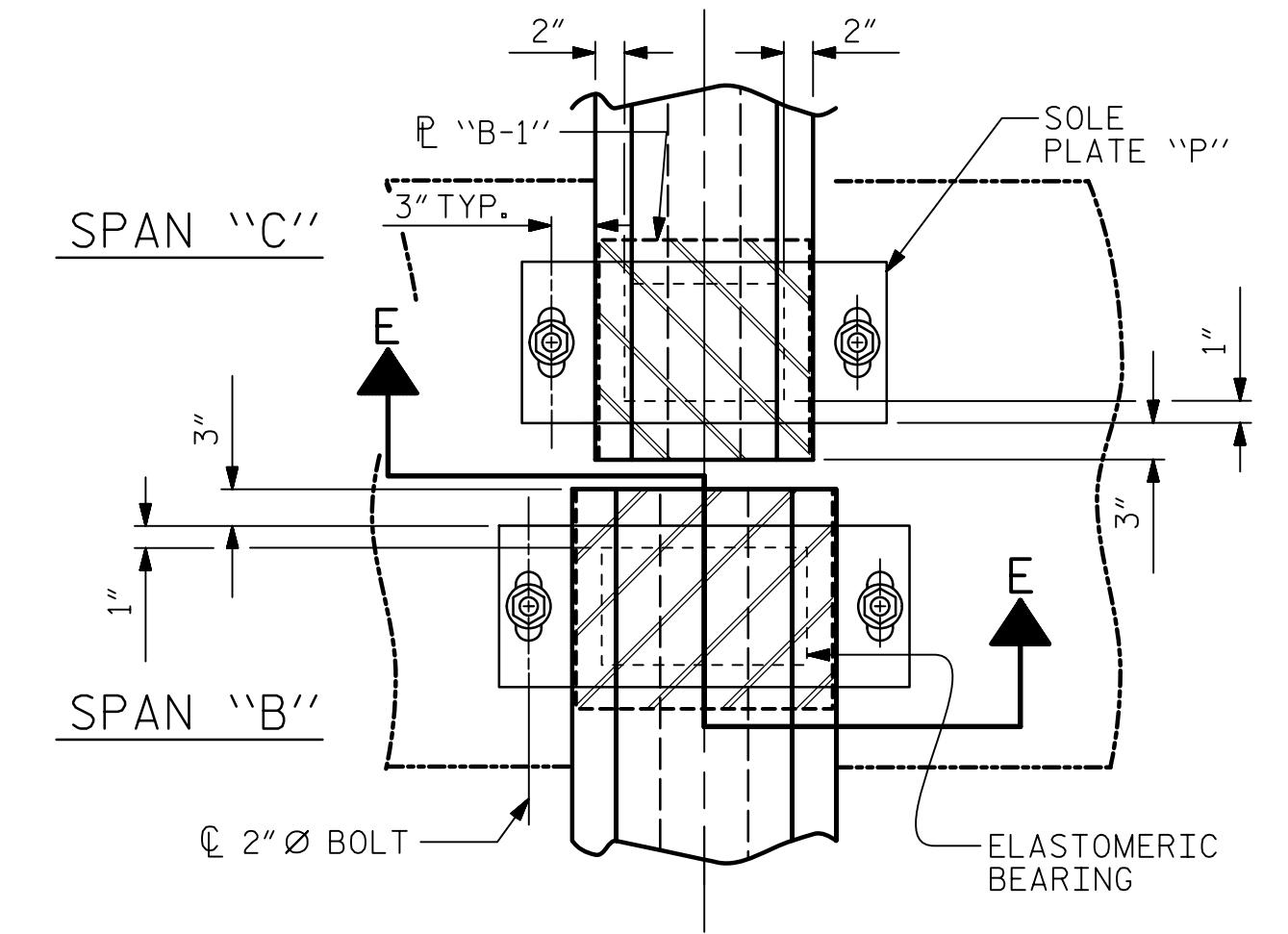
DETAIL "A"



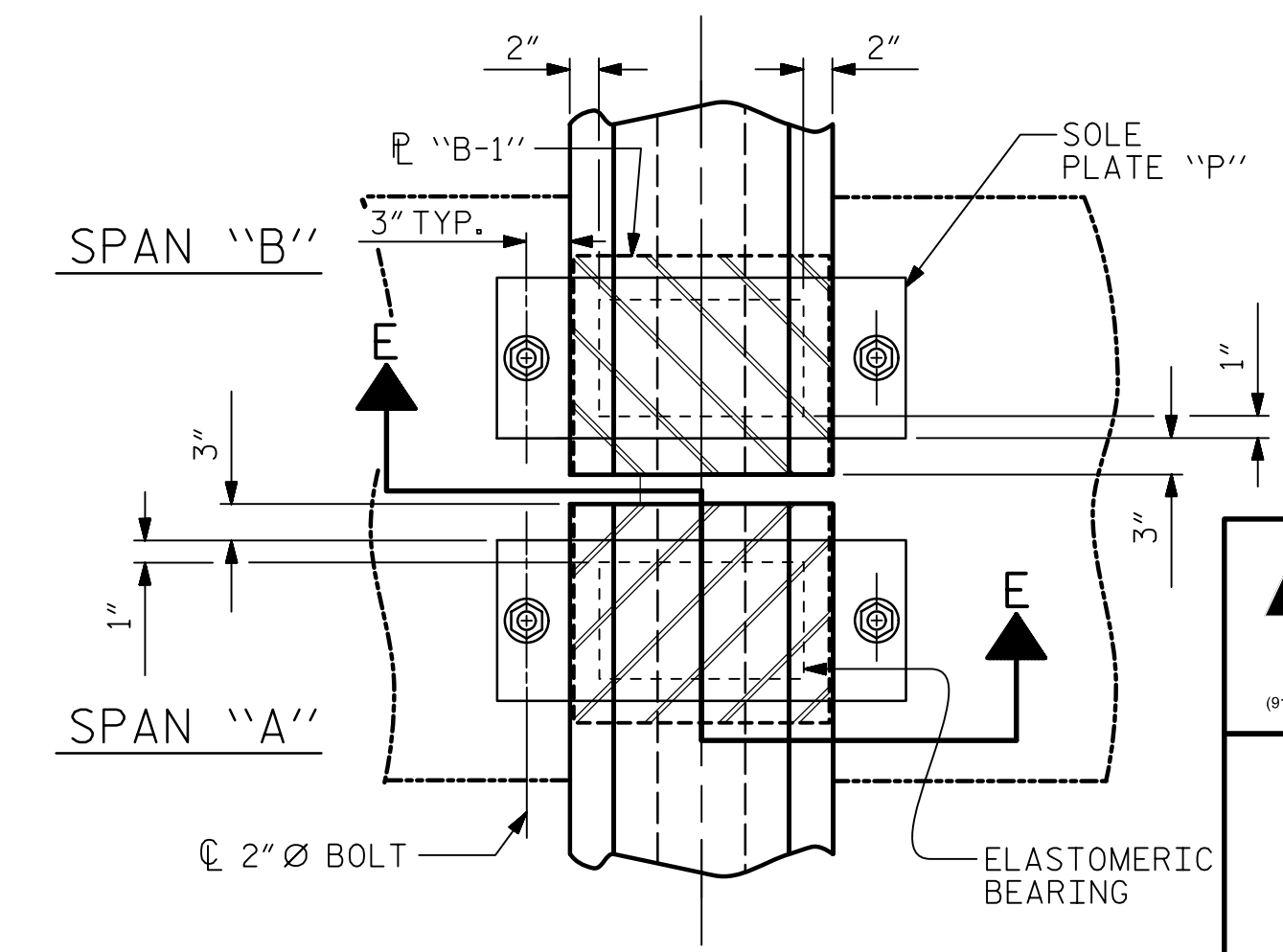
SOLE PLATE DETAILS ("P")



TYPICAL PLAN AT BENT No. 3
(FIXED)



TYPICAL PLAN AT BENT No. 2
(EXPANSION)



TYPICAL PLAN AT BENT No. 1
(FIXED)

NOTES

- AT ALL FIXED POINTS OF SUPPORT, NUTS FOR ANCHOR BOLTS ARE TO BE TIGHTENED FINGER TIGHT AND THEN BACKED OFF 1/2 TURN. THE THREAD OF THE NUT AND BOLT SHALL THEN BE BURRED WITH A SHARP POINTED TOOL.
- THE 2" Ø PIPE SLEEVE SHALL BE CUT FROM SCHEDULE 40 PVC PLASTIC PIPE. THE PVC PLASTIC PIPE SHALL MEET THE REQUIREMENTS OF ASTM D1785.
- STEEL SOLE PLATES, ANCHOR BOLTS, NUTS, AND WASHERS SHALL BE GALVANIZED IN ACCORDANCE WITH THE STANDARD SPECIFICATIONS.
- PRIOR TO WELDING, GRIND THE GALVANIZED SURFACE OF THE PORTION OF THE EMBEDDED PLATE AND SOLE PLATE THAT ARE TO BE WELDED. AFTER WELDING, DAMAGED GALVANIZED SURFACES SHALL BE REPAIRED IN ACCORDANCE WITH THE STANDARD SPECIFICATIONS.
- WHEN WELDING THE SOLE PLATE TO THE EMBEDDED PLATE IN THE GIRDER, USE TEMPERATURE INDICATING WAX PENS, OR OTHER SUITABLE MEANS, TO ENSURE THAT THE TEMPERATURE OF THE SOLE PLATE DOES NOT EXCEED 300°F. TEMPERATURES ABOVE THIS MAY DAMAGE THE ELASTOMER.
- SOLE PLATE "P", BOLTS, NUTS, WASHERS, AND PIPE SLEEVE SHALL BE INCLUDED IN THE PAY ITEM FOR PRESTRESSED CONCRETE GIRDERS.
- ANCHOR BOLTS SHALL MEET THE REQUIREMENTS OF ASTM A449. NUTS SHALL MEET THE REQUIREMENTS OF AASHTO M291-DH OR AASHTO M292-2H. WASHERS SHALL MEET THE REQUIREMENTS OF AASHTO M293. SHOP DRAWINGS ARE NOT REQUIRED FOR ANCHOR BOLT, NUTS AND WASHERS. SHOP INSPECTION IS REQUIRED.
- ALL SURFACES OF BEARING PLATES SHALL BE SMOOTH AND STRAIGHT.
- THE ELASTOMER IN THE STEEL REINFORCED BEARINGS SHALL HAVE A SHEAR MODULUS OF 0.160 KSI, IN ACCORDANCE WITH AASHTO M251.
- FOR STEEL REINFORCED ELASTOMERIC BEARINGS, SEE SPECIAL PROVISIONS.
- ALL SOLE PLATES SHALL BE AASHTO M270 GRADE 36.

THIS SITUATION TYPICAL AT END BENT No. 2

THIS SITUATION TYPICAL AT END BENT No. 1

MAXIMUM ALLOWABLE SERVICE LOADS	
D.L.+L.L. (NO IMPACT)	
TYPE III	205 k
TYPE IV	225 k

PROJECT NO. U-5748
WAKE COUNTY
 STATION: 24+88.00 -L-

AECOM
 AECOM TECHNICAL SERVICES OF NC, INC.
 5438 WADE PARK BOULEVARD, SUITE 200
 RALEIGH, NC 27607
 (919) 854-6200 www.aecom.com
 AECOM License No. F-0342

John C. Morrison
 NORTH CAROLINA PROFESSIONAL ENGINEER
 SEAL 030474
 2/10/2023

STATE OF NORTH CAROLINA DEPARTMENT OF TRANSPORTATION RALEIGH					
STANDARD ELASTOMERIC BEARING DETAILS PRESTRESSED CONCRETE GIRDER SUPERSTRUCTURE					
REVISIONS					SHEET NO.
NO.	BY:	DATE:	NO.	BY:	DATE:
1			3		
2			4		
					TOTAL SHEETS 119

ASSEMBLED BY : M. CATER	DATE : 01/2021
CHECKED BY : J.C. MORRISON	DATE : 05/2021
DRAWN BY : WJH 8/89	REV. 1/15 MAA/TMG
CHECKED BY : CRK 8/89	REV. 12/17 MAA/THC
	REV. 10/21 BNB/AAL

DOCUMENT NOT CONSIDERED FINAL UNLESS ALL SIGNATURES COMPLETED