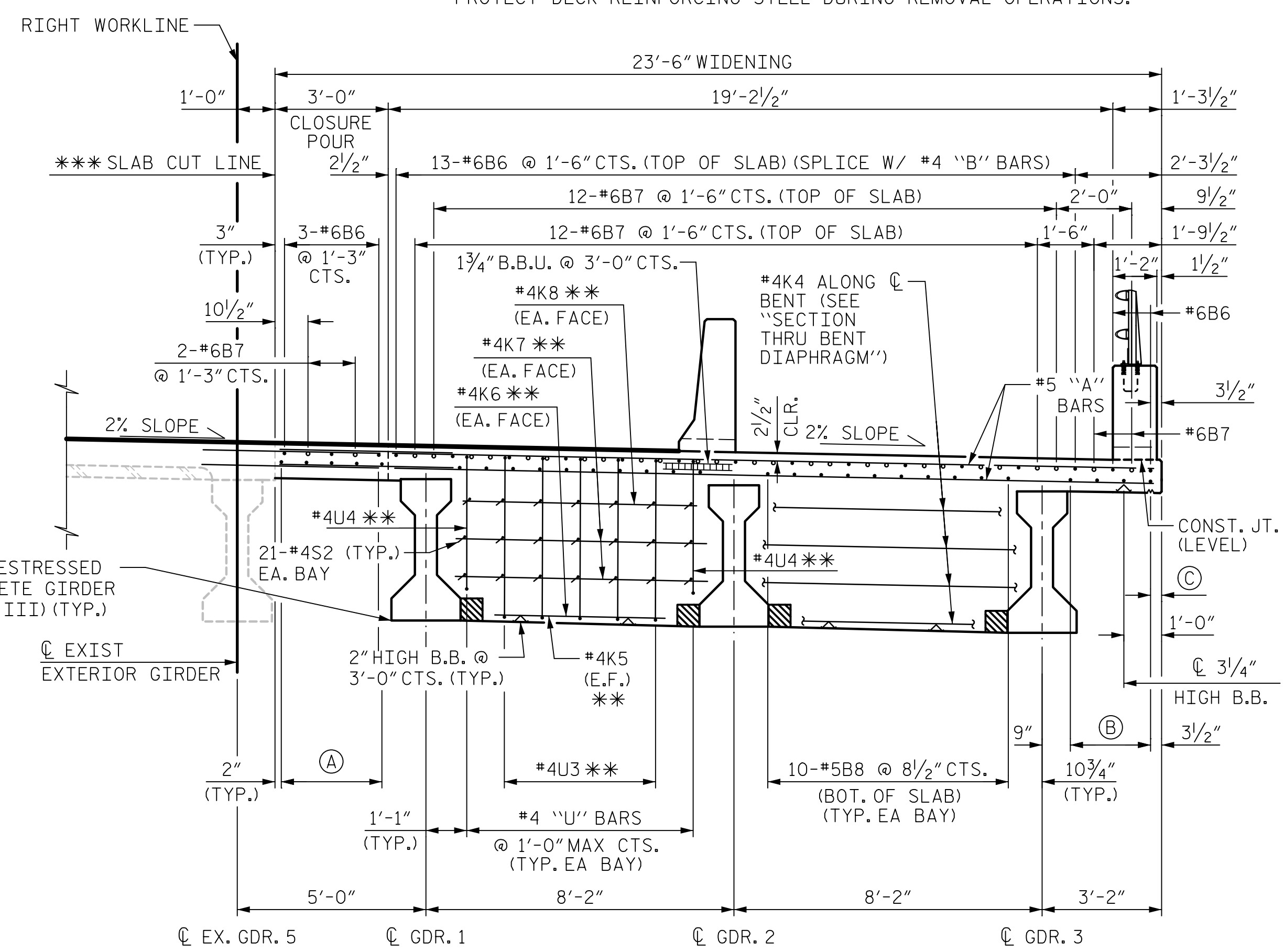


TYPICAL SECTION
(END BENT 2 & BENT 2)
(SPAN C & SPAN D)

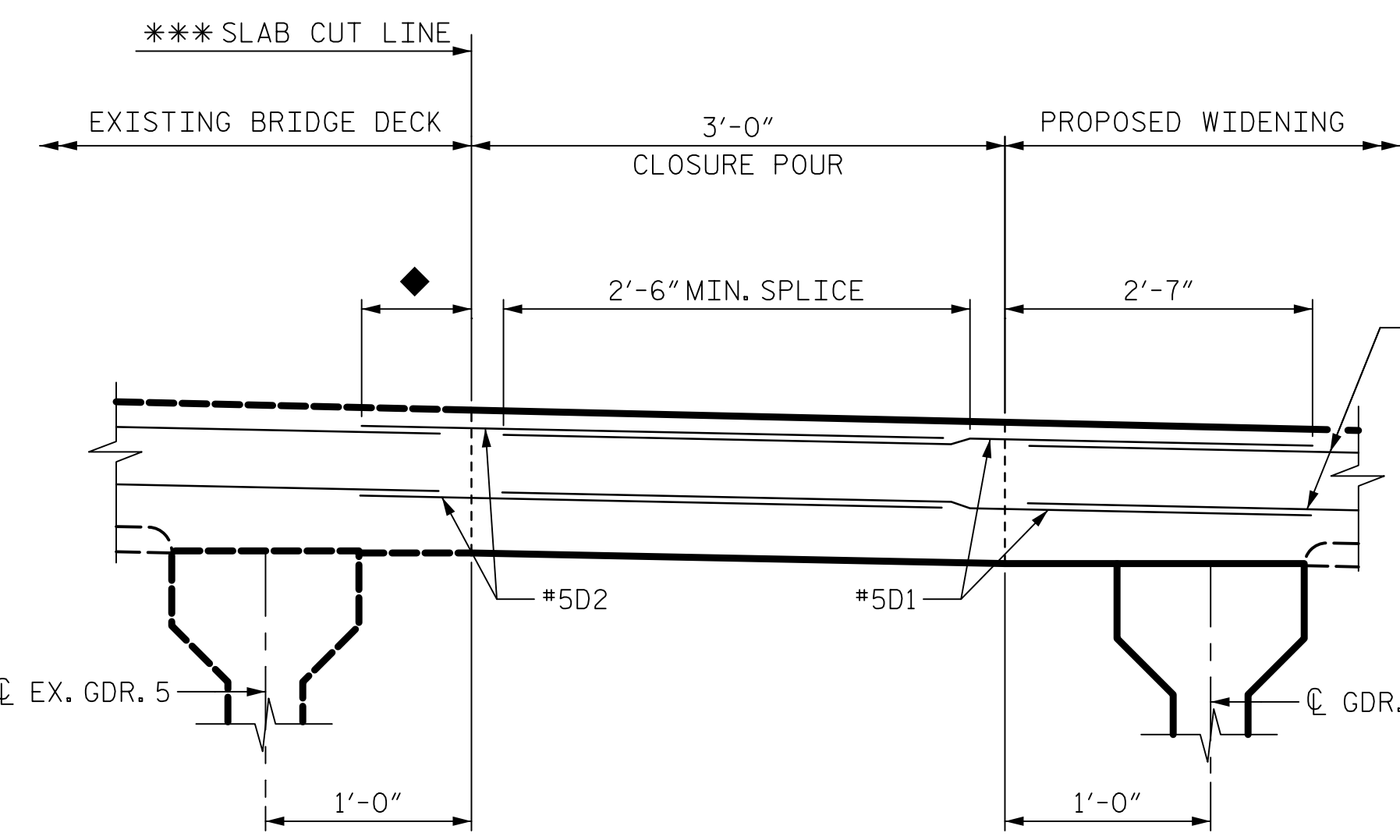
*** PRIOR TO DECK REMOVAL, THE CONTRACTOR SHALL SUBMIT METHOD OF REMOVAL OF EXISTING DECK TO SLAB CUT LINE AS SHOWN IN PLANS. CONTRACTOR SHALL ENSURE MEASURES ARE TAKEN TO PROTECT DECK REINFORCING STEEL DURING REMOVAL OPERATIONS.



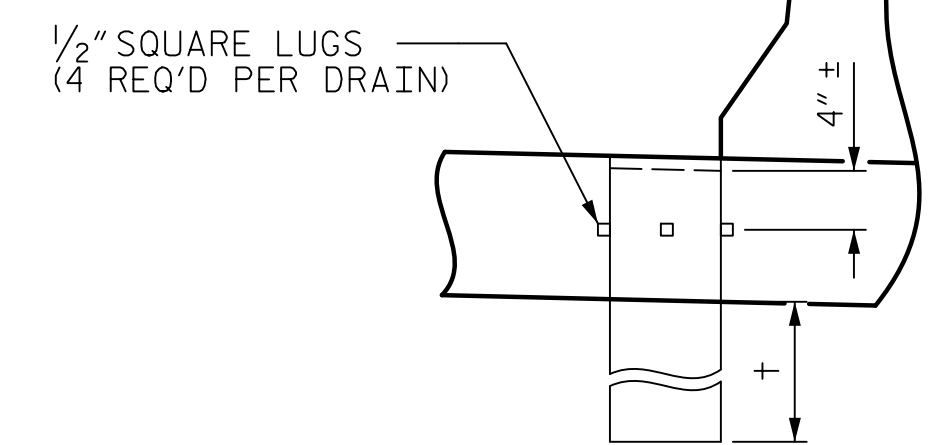
PARTIAL TYPICAL SECTION
(BENT 3)

"B" BAR KEY

- = CONTINUOUS BAR RUN
- = NON-CONTINUOUS BAR RUN FOR NEGATIVE MOMENT REGIONS, SEE "PLAN OF SPAN" SHEETS



CLOSURE POUR DETAIL
(ALL SPANS)



DECK DRAIN DETAILS

† DRAIN TO EXTEND 2" BELOW BOTTOM OF GIRDER (SEE "PLAN OF SPANS" FOR LOCATION OF DECK DRAINS)
TOP OF FLOOR DRAIN TO BE SET 3/8" BELOW SURFACE OF SLAB.
4 - 1/2" SQUARE LUGS TO BE GLUED TO THE PVC PLASTIC PIPE AT EQUAL SPACES AROUND THE PIPE DRAIN APPROXIMATELY 4" FROM THE TOP OF THE PIPE.
THE 6" DIA. PVC PLASTIC PIPE AND FITTINGS SHALL BE SCHEDULE 40 AND CONFORM TO ASTM D1785.

PROJECT NO. U-5748
WAKE COUNTY
STATION: 24+88.00 -L-

SHEET 2 OF 3

DATE: 10/20/2023 TIME: 12:35:48 PM
USER: c:\pwworking\pwworking.com\AECOM\DS21\A...2020\Documents\60609754-U-5748-L-1\B1021
DGN: pwworking\pwworking.com\AECOM\DS21\A...2020\Documents\60609754-U-5748-L-1\B1021

DRAWN BY: M. CATER DATE: 10/20/2020
CHECKED BY: J.C. MORRISON DATE: 12/20/2022
DESIGNED BY: D. RITACCO DATE: 09/20/2020
DESIGN CHECKED BY: J.C. MORRISON DATE: 10/20/2020

AECOM
AECOM TECHNICAL SERVICES OF NC, INC.
5438 WADE PARK BOULEVARD, SUITE 200
RALEIGH, NC 27607
(919) 854-6200 www.aecom.com
AECOM License No. F-0342

JOHN C. MORRISON
NORTH CAROLINA PROFESSIONAL ENGINEER
SEAL 030474
2/10/2023

STATE OF NORTH CAROLINA DEPARTMENT OF TRANSPORTATION RALEIGH					
SUPERSTRUCTURE					
TYPICAL SECTIONS (NORTHBOUND LANES)					
REVISIONS					
NO.	BY:	DATE:	NO.	BY:	DATE:
1			3		
2			4		
SHEET NO. S1-11					TOTAL SHEETS 119

DOCUMENT NOT CONSIDERED FINAL UNLESS ALL SIGNATURES COMPLETED