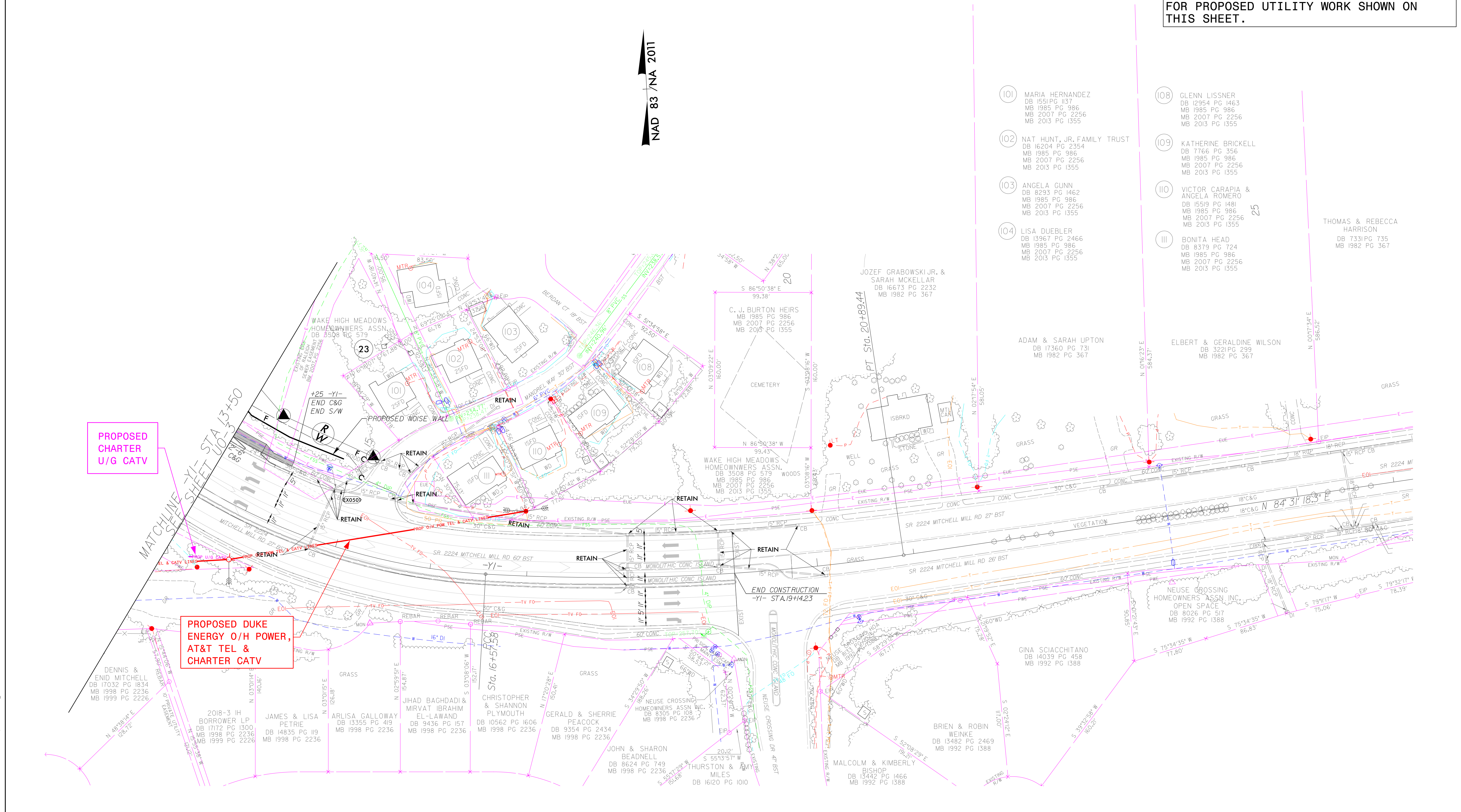


UTILITIES BY OTHERS

ALL PROPOSED UTILITY WORK SHOWN ON THIS SHEET WILL BE DONE BY OTHERS. NO PAYMENT WILL BE MADE TO THE CONTRACTOR FOR PROPOSED UTILITY WORK SHOWN ON THIS SHEET.

NAD 83 / NA 2011



PROPOSED CHARTER U/G CATV

PROPOSED DUKE ENERGY O/H POWER, AT&T TEL & CHARTER CATV

- (101) MARIA HERNANDEZ
DB 1551 PG 137
MB 1985 PG 986
MB 2007 PG 2256
MB 2013 PG 1355
- (102) NAT HUNT, JR. FAMILY TRUST
DB 16204 PG 2354
MB 1985 PG 986
MB 2007 PG 2256
MB 2013 PG 1355
- (103) ANGELA GUNN
DB 8293 PG 1462
MB 1985 PG 986
MB 2007 PG 2256
MB 2013 PG 1355
- (104) LISA DUEBLER
DB 13967 PG 2466
MB 1985 PG 986
MB 2007 PG 2256
MB 2013 PG 1355
- (108) GLENN LISSNER
DB 12954 PG 1463
MB 1985 PG 986
MB 2007 PG 2256
MB 2013 PG 1355
- (109) KATHERINE BRICKELL
DB 7766 PG 356
MB 1985 PG 986
MB 2007 PG 2256
MB 2013 PG 1355
- (110) VICTOR CARAPIA & ANGELA ROMERO
DB 15519 PG 1481
MB 1985 PG 986
MB 2007 PG 2256
MB 2013 PG 1355
- (111) BONITA HEAD
DB 8379 PG 724
MB 1985 PG 986
MB 2007 PG 2256
MB 2013 PG 1355

THOMAS & REBECCA HARRISON
DB 7331 PG 735
MB 1982 PG 367

ADAM & SARAH UPTON
DB 17360 PG 731
MB 1982 PG 367

ELBERT & GERALDINE WILSON
DB 3221 PG 299
MB 1982 PG 367

WAKE HIGH MEADOWS HOMEOWNERS ASSN.
DB 3508 PG 573
MB 1985 PG 986
MB 2007 PG 2256
MB 2013 PG 1355

JOZEF GRABOWSKI JR. & SARAH MCKELLAR
DB 16673 PG 2232
MB 1982 PG 367

DENNIS & ENID MITCHELL
DB 17032 PG 1834
MB 1998 PG 2236
MB 1999 PG 2226

2018-3 IH BORROWER LP
DB 17172 PG 1300
MB 1998 PG 2236
MB 1999 PG 2226

JAMES & LISA PETRIE
DB 14835 PG 119
MB 1998 PG 2236

ARLISA GALLOWAY
DB 13355 PG 419
MB 1998 PG 2236

JIHAD BAGHDADI & MIRVAT IBRAHIM EL-LAWAND
DB 9436 PG 157
MB 1998 PG 2236

CHRISTOPHER & SHANNON PLYMOUTH
DB 10562 PG 1606
MB 1998 PG 2236

GERALD & SHERRIE PEACOCK
DB 9354 PG 2434
MB 1998 PG 2236

JOHN & SHARON BEADNELL
DB 8624 PG 749
MB 1998 PG 2236

THURSTON & AMY MILES
DB 16120 PG 1010

NEUSE CROSSING HOMEOWNERS ASSN INC
DB 8305 PG 108
MB 1998 PG 2236

BRIEN & ROBIN WEINKE
DB 13482 PG 2469
MB 1992 PG 1388

GINA SCIACCHITANO
DB 14039 PG 458
MB 1992 PG 1388

NEUSE CROSSING HOMEOWNERS ASSN INC OPEN SPACE
DB 8026 PG 517
MB 1992 PG 1388

MALCOLM & KIMBERLY BISHOP
DB 13442 PG 1466
MB 1992 PG 1388

Prepared in the Office of:



AECOM TECHNICAL SERVICES OF NORTH CAROLINA, INC.
5438 WADE PARK BLVD, SUITE 200, RALEIGH, NC 27607
919-461-1100
F-0342

8:49:54 AM No. 2020\dms\38379\U5748_uo_psh09.dgn