

DOCUMENT NOT CONSIDERED FINAL UNLESS ALL SIGNATURES COMPLETED

PROP. 1- FIRE HYDRANT 8' - FIRE HYDRANT LEG 1- REMOVE FIRE HYDRANT

PROP. 1 - 2" AIR RELEASE VALVE 30' - 2" WATER SERVICE LINE 1 - 4' DIA UTILITY MANHOLE 2' - UTILITY MANHOLE WALL 4' DIA 1 - REMOVE UTILITY MANHOLE

PROP. 1- FIRE HYDRANT 14' - FIRE HYDRANT LEG 1- REMOVE FIRE HYDRANT

PROP. 1- FIRE HYDRANT 12' - FIRE HYDRANT LEG 1- REMOVE FIRE HYDRANT

PROP. 156' - ABANDON 8" UTILITY PIPE, 1- UTILITY MANHOLE

PROP. 4' DIA. UTILITY MANHOLE A3 4.3' - UTILITY MANHOLE WALL, 4' DIA.

PROP. 174.47' - 8" SANITARY GRAVITY SEWER

PROP. 4' DIA. UTILITY MANHOLE A1

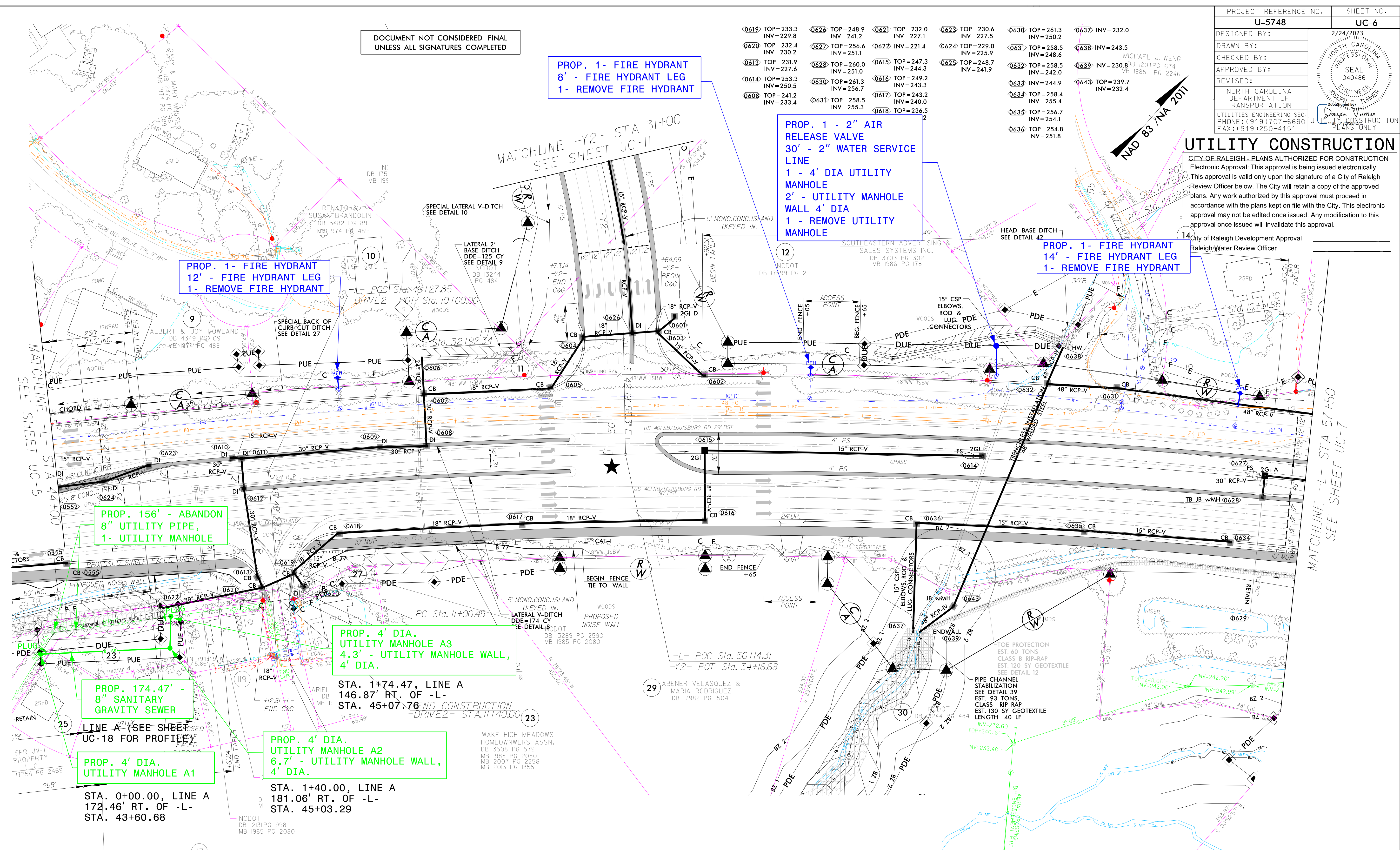
PROP. 4' DIA. UTILITY MANHOLE A2 6.7' - UTILITY MANHOLE WALL, 4' DIA.

Bypass Pumping Operations

**Sewer Bypass Pumping:**  
A bypass plan sealed by a NC Professional Engineer must be submitted to Public Utilities prior to pumping operations to coordinate with administration engineering staff. Pumps should be sized to handle the peak daily flow (2.5 times the average daily flow with a minimum of 50 gpm) for the line or area of work. The contractor shall secure pumps from a pump supplier according to the provided flow information. Pumping operations must be monitored 24-hours a day for each day of the pumping operation by qualified personnel in order to respond to problems or failures. 100% redundancy is required for pumping operations. In addition, back up pumps are to be connected to the bypass force main to facilitate immediate use upon failure of the primary pumps.

- 0601 TOP=248.1 INV=245.9
- 0602 TOP=251.2 INV=248.2
- 0603 TOP=249.8 INV=245.8
- 0604 TOP=246.5 INV=241.0
- 0605 TOP=246.4 INV=240.6
- 0606 TOP=248.1 INV=245.9
- 0609 TOP=239.4 INV=233.2
- 0610 TOP=233.8 INV=230.6
- 0611 TOP=234.3 INV=229.3
- 0612 TOP=234.4 INV=229.1
- 0607 TOP=242.0 INV=233.7

- 0619 TOP=233.3 INV=229.8
- 0620 TOP=232.4 INV=230.2
- 0613 TOP=231.9 INV=227.6
- 0614 TOP=253.3 INV=250.5
- 0608 TOP=241.2 INV=233.4
- 0626 TOP=248.9 INV=241.2
- 0627 TOP=256.6 INV=251.1
- 0628 TOP=260.0 INV=251.0
- 0630 TOP=261.3 INV=256.7
- 0631 TOP=258.5 INV=255.3
- 0621 TOP=232.0 INV=227.1
- 0622 TOP=256.6 INV=221.4
- 0615 TOP=247.3 INV=244.3
- 0616 TOP=249.2 INV=243.3
- 0617 TOP=243.2 INV=240.0
- 0618 TOP=236.5 INV=232.2
- 0623 TOP=230.6 INV=227.5
- 0624 TOP=229.0 INV=225.9
- 0625 TOP=248.7 INV=241.9
- 0630 TOP=261.3 INV=250.2
- 0631 TOP=258.5 INV=248.6
- 0632 TOP=258.5 INV=242.0
- 0633 INV=244.9
- 0634 TOP=258.4 INV=255.4
- 0635 TOP=256.7 INV=254.1
- 0636 TOP=254.8 INV=251.8
- 0637 INV=232.0
- 0638 INV=243.5
- 0639 INV=230.8 INV=232.4
- 0643 TOP=239.7 INV=232.4



UTILITY CONSTRUCTION

CITY OF RALEIGH - PLANS AUTHORIZED FOR CONSTRUCTION  
Electronic Approval: This approval is being issued electronically. This approval is valid only upon the signature of a City of Raleigh Review Officer below. The City will retain a copy of the approved plans. Any work authorized by this approval must proceed in accordance with the plans kept on file with the City. This electronic approval may not be edited once issued. Any modification to this approval once issued will invalidate this approval.

City of Raleigh Development Approval  
Raleigh Water Review Officer

MATCHLINE -L- STA 57+50 SEE SHEET UC-7

MATCHLINE -L- STA 44+00 SEE SHEET UC-5

MATCHLINE -Y2- STA 31+00 SEE SHEET UC-11

