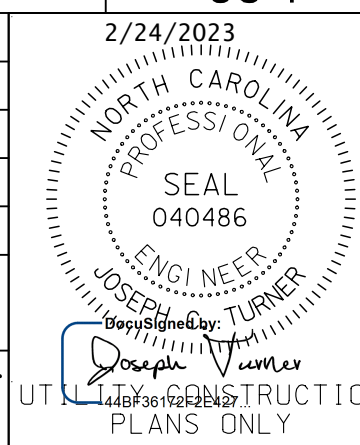




AECOM TECHNICAL SERVICES OF NORTH CAROLINA, INC.  
5438 WADE PARK BLVD, SUITE 200, RALEIGH, NC 27607  
919-461-1100  
F-0342

DOCUMENT NOT CONSIDERED FINAL  
UNLESS ALL SIGNATURES COMPLETED

|  |           |
|--|-----------|
| PROJECT REFERENCE NO.  | SHEET NO. |
| U-5748   | UC-4      |
| DESIGNED BY:   | 2/24/2023 |
| DRAWN BY:  |           |
| CHECKED BY:  |           |
| APPROVED BY:   |           |
| REVISED:   |           |
| NORTH CAROLINA DEPARTMENT OF TRANSPORTATION<br>UTILITIES ENGINEERING SECTION<br>PHONE: (919) 707-6690<br>FAX: (919) 250-4151 |           |

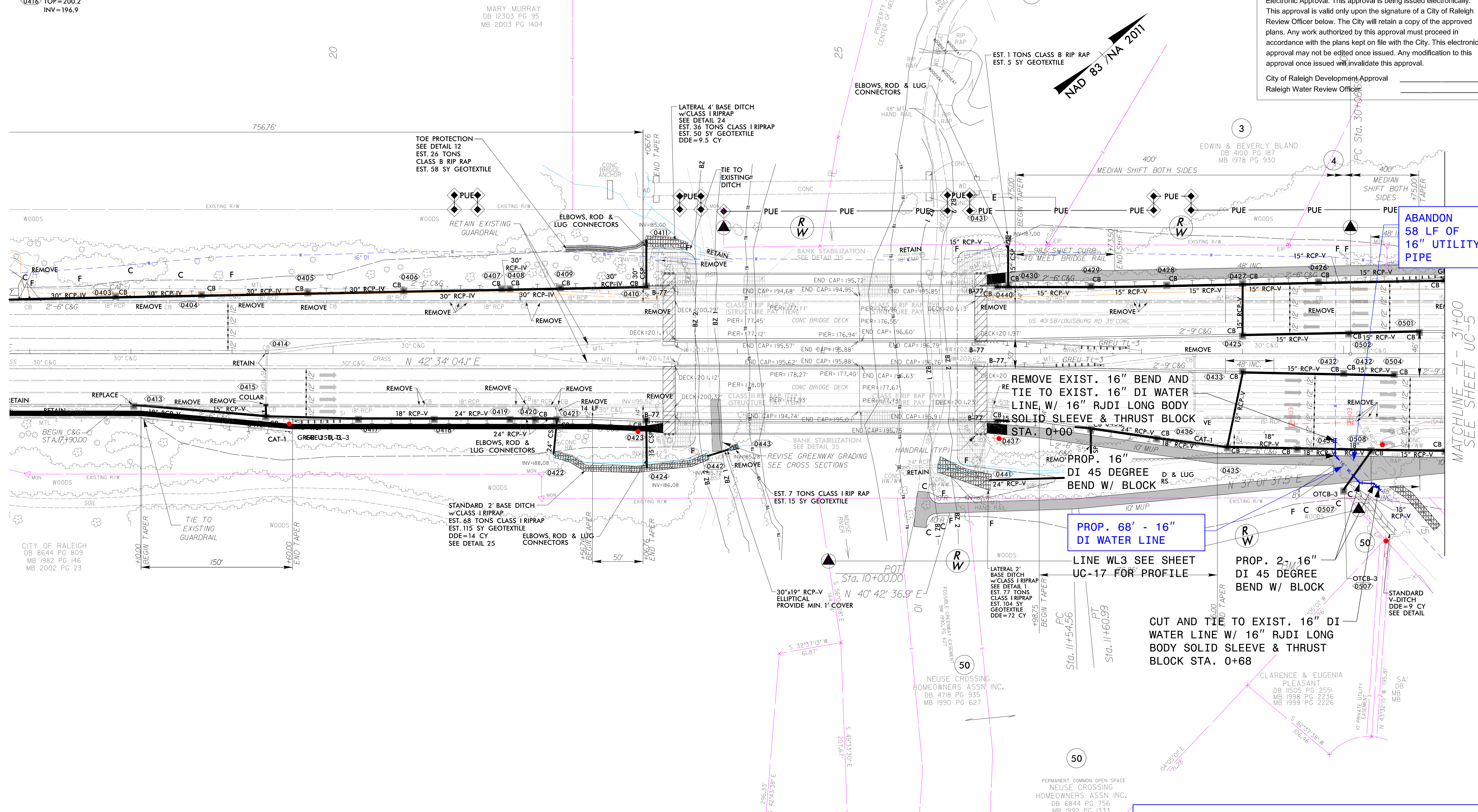


### UTILITY CONSTRUCTION

CITY OF RALEIGH - PLANS AUTHORIZED FOR CONSTRUCTION Electronic Approval: This approval is being issued electronically. This approval is valid only upon the signature of a City of Raleigh Review Officer below. The City will retain a copy of the approved plans. Any work authorized by this approval must proceed in accordance with the plans kept on file with the City. This electronic approval may not be edited once issued. Any modification to this approval once issued will invalidate this approval.

City of Raleigh Development Approval  
Raleigh Water Review Officer

- 0409 TOP=199.7 INV=192.5
- 0410 TOP=199.6 INV=192.0
- 0411 TOP=199.5 INV=185.00
- 0412 TOP=200.2 INV=198.9
- 0413 TOP=200.9 INV=198.2
- 0414 TOP=201.2 INV=198.2
- 0415 INV=197.4
- 0416 TOP=200.2 INV=196.9
- 0417 TOP=199.9 INV=196.5
- 0418 TOP=199.6 INV=195.6
- 0419 TOP=199.5 INV=195.2
- 0420 TOP=199.5 INV=195.1
- 0421 TOP=199.5 INV=195.0
- 0422 INV=188.1
- 0423 TOP=199.7 INV=196.2
- 0424 INV=186.1
- 0425 TOP=202.8 INV=199.2
- 0426 TOP=202.0 INV=199.0
- 0427 TOP=201.6 INV=198.6
- 0428 TOP=201.4 INV=198.2
- 0429 TOP=201.2 INV=197.8
- 0430 TOP=200.9 INV=197.1
- 0431 INV=187.00
- 0432 TOP=203.3 INV=200.2
- 0433 TOP=203.0 INV=199.7
- 0434 TOP=201.5 INV=197.8
- 0435 TOP=201.4 INV=197.5
- 0436 TOP=201.2 INV=196.6
- 0437 TOP=200.8 INV=197.8
- 0438 TOP=201.1 INV=196.3
- 0439 TOP=187.6 INV=183.2
- 0440 TOP=200.8 INV=197.8
- 0442 INV=185.7
- 0443 INV=185.3



ABANDON 58 LF OF 16" UTILITY PIPE

PROP. 68" - 16" DI WATER LINE

LINE WL3 SEE SHEET UC-17 FOR PROFILE

PROP. 2" - 16" DI 45 DEGREE BEND W/ BLOCK

CUT AND TIE TO EXIST. 16" DI WATER LINE W/ 16" RJDI LONG BODY SOLID SLEEVE & THRUST BLOCK STA. 0+68

THE ESTIMATED QUANTITY OF DUCTILE IRON WATER PIPE FITTINGS ON THIS PLAN SHEET IS 1490 POUNDS. THE ACTUAL QUANTITY AND TYPE OF FITTINGS WILL VARY BASED ON FIELD CONDITIONS.