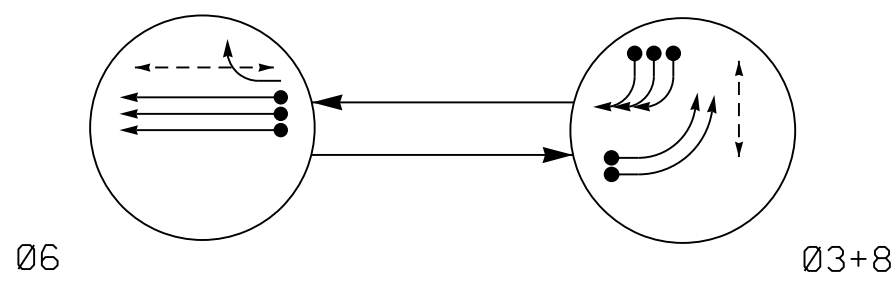


PHASING DIAGRAM



PHASING DIAGRAM DETECTION LEGEND

- DETECTED MOVEMENT
UNDETECTED MOVEMENT (OVERLAP)
UNSIGNALIZED MOVEMENT
PEDESTRIAN MOVEMENT

TABLE OF OPERATION table with columns for SIGNAL FACE, PHASE, and various movement indicators.

SE-PAC 2070 LOOP & DETECTOR UNIT INSTALLATION CHART

Large table detailing inductive loops and detector programming parameters like ZONE NO., SIZE, TURNS, and DETECTOR PROGRAMMING.

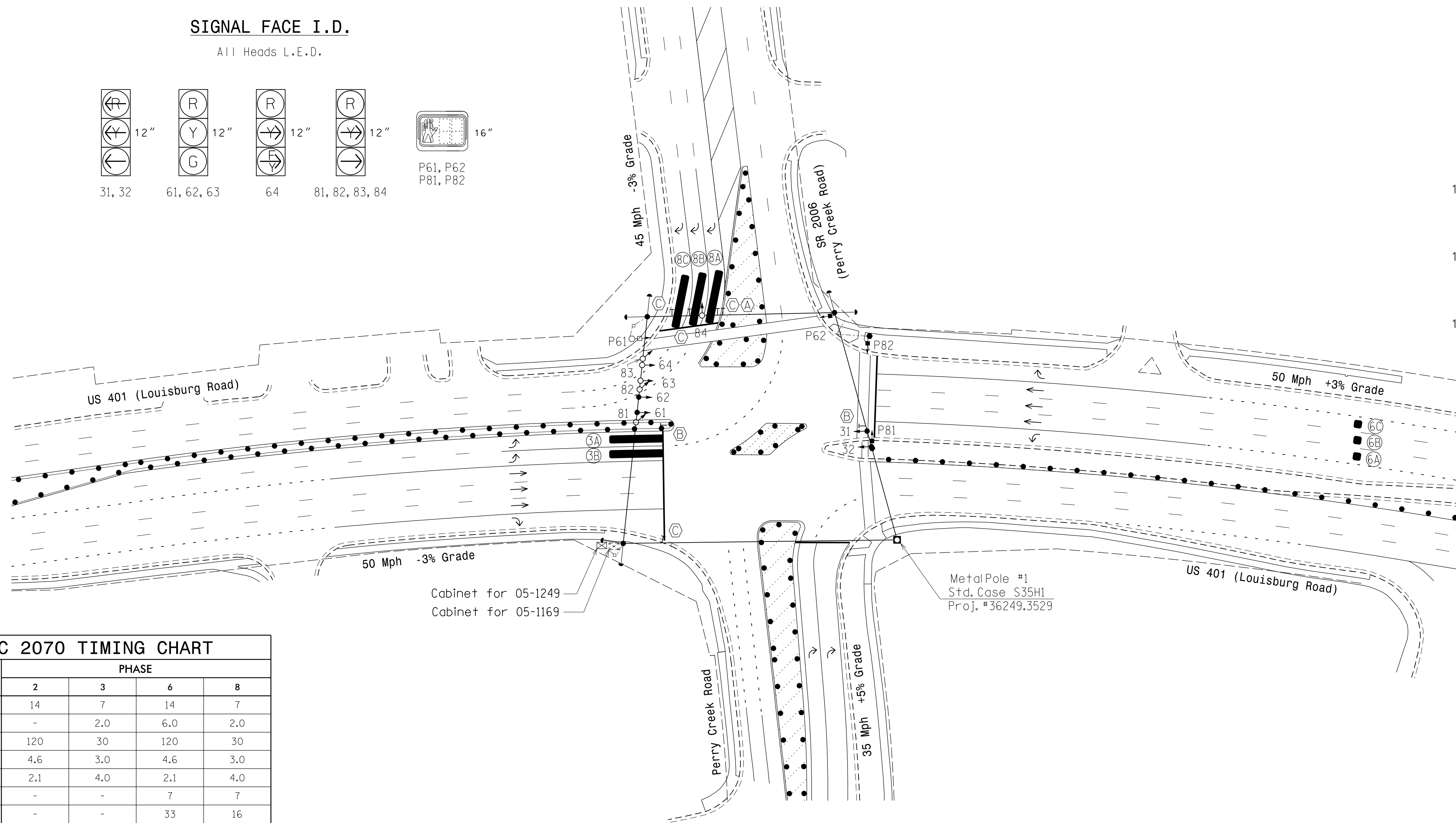
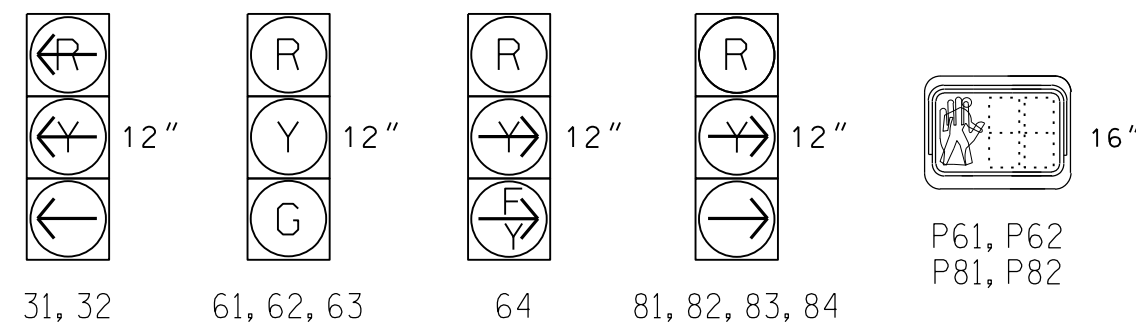
\* Video Detection Zone

2 Phase Fully Actuated (Raleigh Signal System) NOTES

- 1. Refer to "Roadway Standard Drawings NCDOT" dated January 2018...
2. Do not program signal for late night flashing operation...
3. Reposition existing signal heads...
4. Install backplates for signal heads...
5. Set all detector units to presence mode.
6. Omit "WALK" and flashing "DON'T WALK" with no pedestrian calls.
7. Program pedestrian heads to countdown the flashing "Don't Walk" time only.
8. Phase 8 pedestrian timing is designed as a 2 stage crossing...
9. Locate new cabinet so as not to obstruct sight distance...
10. This intersection uses video detection. Install detectors according to the manufacturer's instructions...
11. Maximum times shown in timing chart are for free-run operation only. Coordinated signal system timing values supersede these values.
12. Program Phase 2 as a dummy phase for Ring 1.

SIGNAL FACE I.D.

All Heads L.E.D.



SE-PAC 2070 TIMING CHART

Timing chart table with columns for FEATURE, PHASE (2, 3, 6, 8), and timing values like Min Green, Passage Gap, etc.

\* These values may be field adjusted. Do not adjust Min Green and Extension times for phases 2 and 6 lower than what is shown...

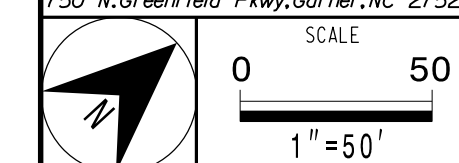
LEGEND

Legend table defining symbols for PROPOSED and EXISTING items like Traffic Signal Head, Modified Signal Head, Pedestrian Signal Head, etc.

New Installation - Temporary Design (TMP Phase I-B)

Professional seal area for AECOM and North Carolina Professional Engineer, including project details, signatures, and dates.

AECOM logo and company address/phone information.



Vertical text on the left edge: 1/24/2023, DW:\aecom\nc-pac\benf1\ey.com\AECOM\2023\NA\_2020\Documents\6609175-U-5748-L\plan\M11\00-CAD\_015\9310-CAD\00-ADDOT-TIP\Traffic\ck5\grais\05121911\_sig\_den\_2022\XXX.dgn