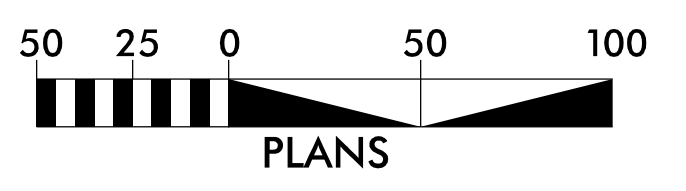
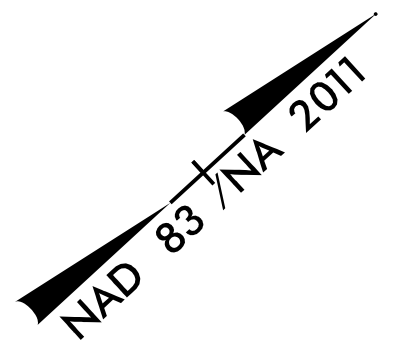


5/14/99  
 9:58:37 AM  
 \\60609754\115748\Design\115748\CAD\GIS\910\CAD\70\_NCD01\_TIP\Environmental\Design\U5748\_EC.psh29\_FG.dgn

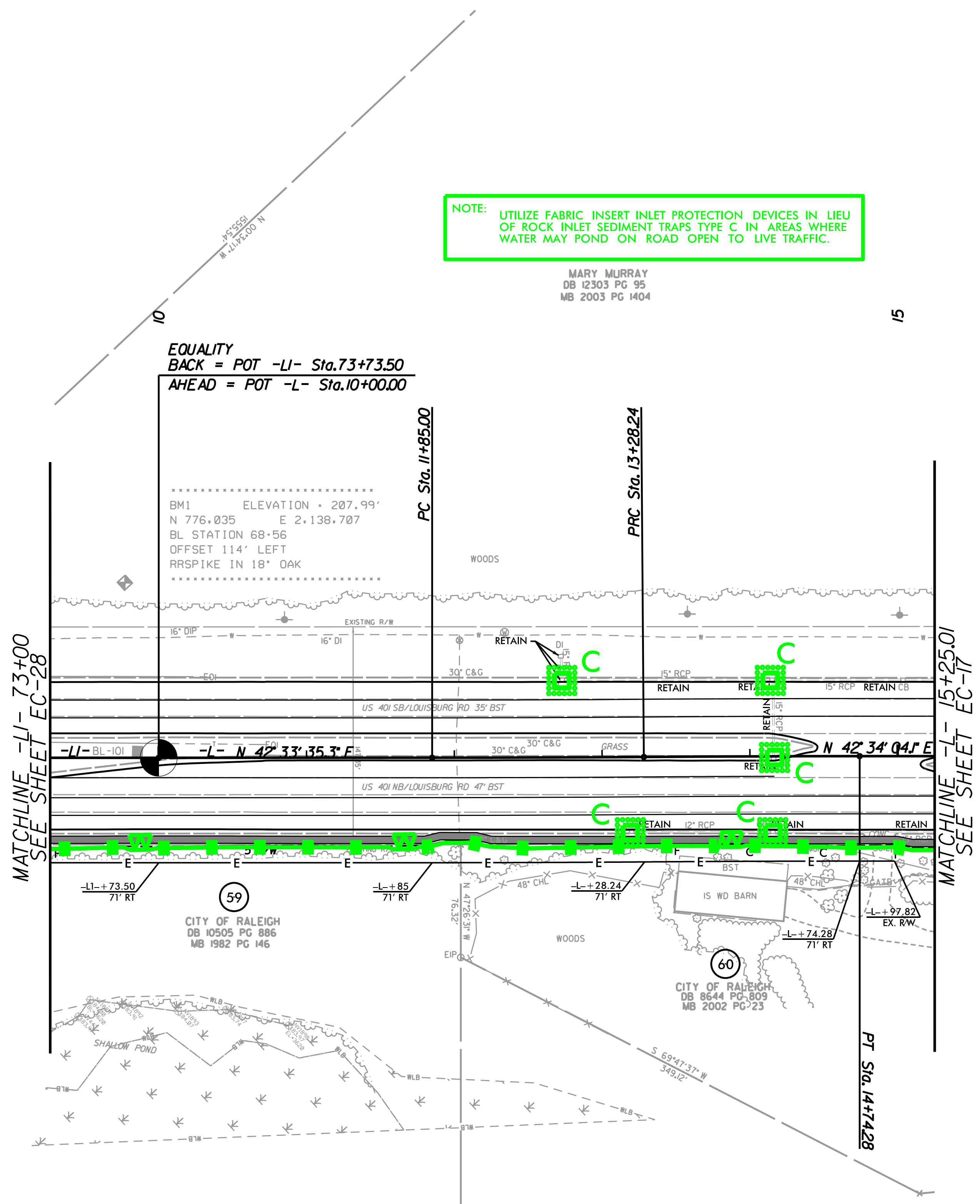
PROJECT REFERENCE NO.	SHEET NO.
U-5748	EC-29/CONST.16
R/W SHEET NO.	

Prepared in the Office of: **AECOM**  
NC FIRM LICENSE No. F-0342  
 5438 Hope Park Blvd, Suite 200  
 Raleigh, NC 27607  
 (919) 854-6200 • (919) 854-6259(FAX)



**NOTE:** UTILIZE FABRIC INSERT INLET PROTECTION DEVICES IN LIEU OF ROCK INLET SEDIMENT TRAPS TYPE C IN AREAS WHERE WATER MAY POND ON ROAD OPEN TO LIVE TRAFFIC.

MARY MURRAY  
 DB 12303 PG 95  
 MB 2003 PG 1404



**EQUALITY**  
 BACK = POT -L- Sta. 73+73.50  
 AHEAD = POT -L- Sta. 10+00.00

BM1 ELEVATION = 207.99'  
 N 776.035 E 2,138.707  
 BL STATION 68+56  
 OFFSET 114' LEFT  
 RR SPIKE IN 18\"/>

-L-

PI Sta 12+56.62	PI Sta 14+01.26
$\Delta = 0^\circ 24' 37.3\"$ (LT)	$\Delta = 0^\circ 25' 06.1\"$ (RT)
D = 0' 17' 11.3"	D = 0' 17' 11.3"
L = 143.24'	L = 146.04'
T = 71.62'	T = 73.02'
R = 20,000.00'	R = 20,000.00'
e = EXIST.	e = EXIST.

FOR -L1- PROFILE, SEE SHEET NO. 30