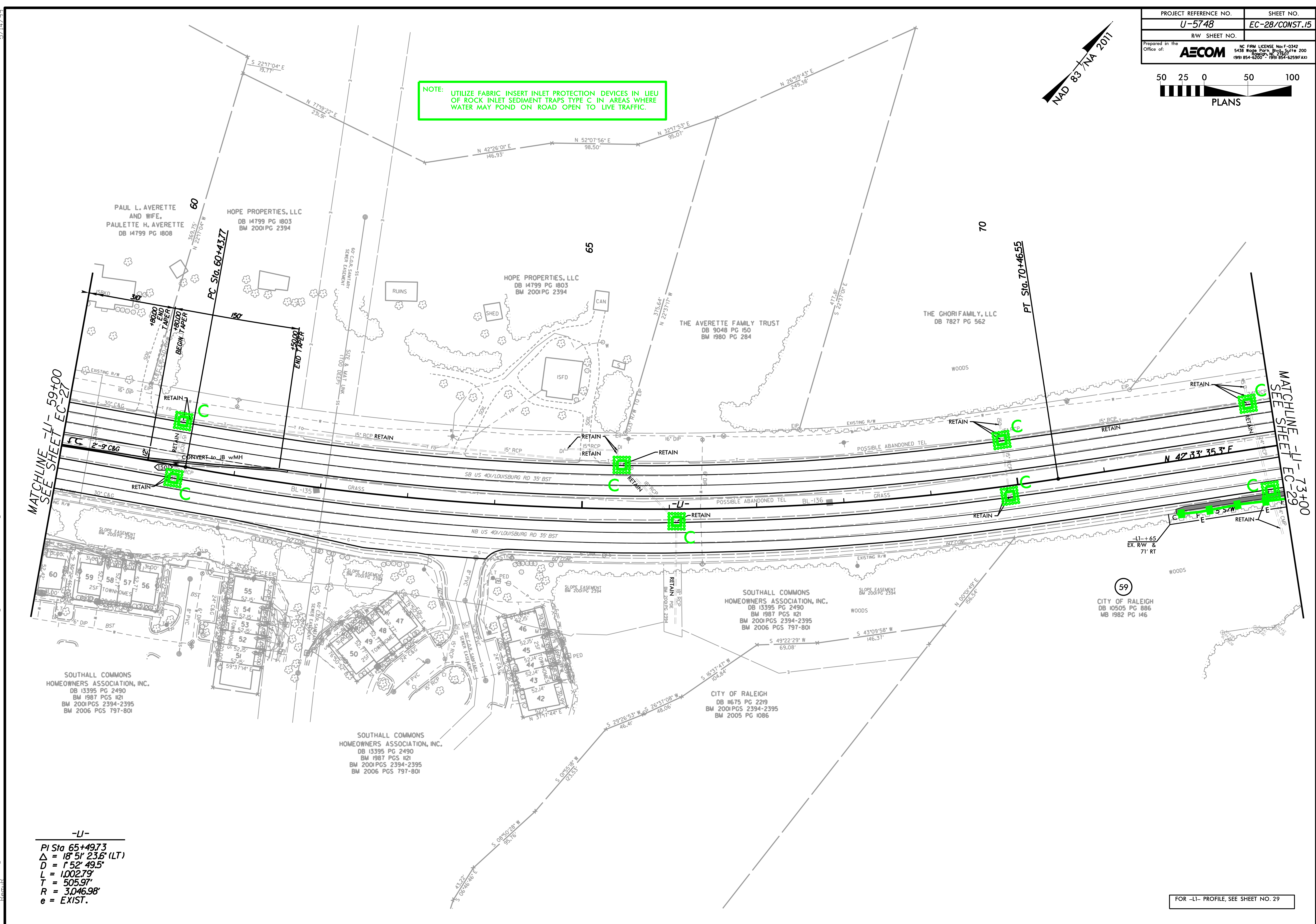


**NOTE:** UTILIZE FABRIC INSERT INLET PROTECTION DEVICES IN LIEU OF ROCK INLET SEDIMENT TRAPS TYPE C IN AREAS WHERE WATER MAY POND ON ROAD OPEN TO LIVE TRAFFIC.



-LI-  
 PI Sta 65+497.3  
 Δ = 18°51' 23.6" (LT)  
 D = 152' 49.5"  
 L = 1,002.79'  
 T = 505.97'  
 R = 3,046.98'  
 e = EXIST.

FOR -LI- PROFILE, SEE SHEET NO. 29

5/14/2011 9:50:08 AM ... \\60609754...Ligon Mill\900-CAD-GIS\910-CAD-GIS\910-CAD-GIS\U5748\_EC\_psh28.FC.dgn