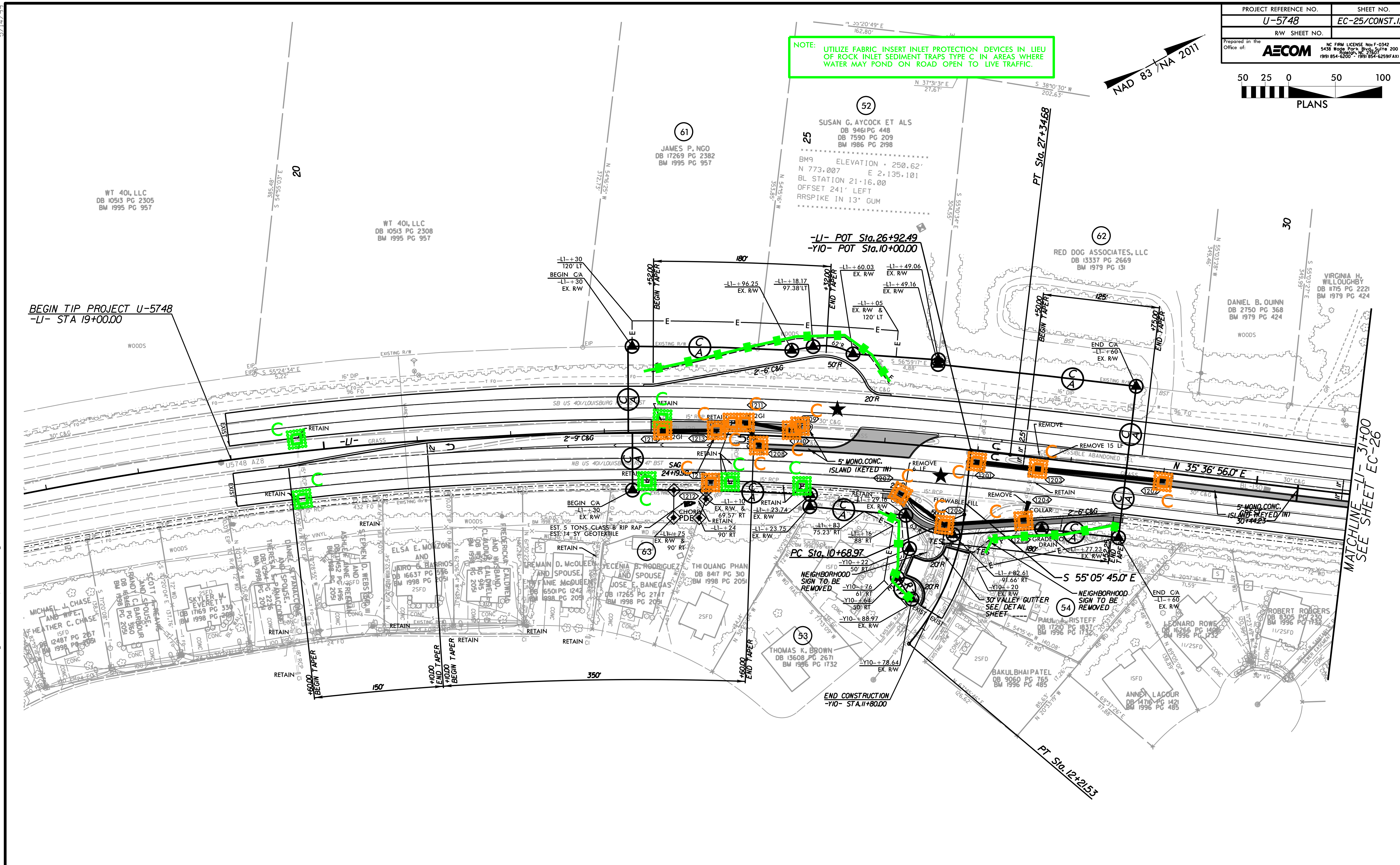


NOTE: UTILIZE FABRIC INSERT INLET PROTECTION DEVICES IN LIEU OF ROCK INLET SEDIMENT TRAPS TYPE C IN AREAS WHERE WATER MAY POND ON ROAD OPEN TO LIVE TRAFFIC.



-LI-	-Y10-
PI Sta 21+32.83	PI Sta 11+47.63
$\Delta = 20' 30" 59.4" (RT)$	$\Delta = 34' 22" 23.2" (RT)$
$D = 1' 41" 09.6"$	$D = 22' 31" 50.8"$
$L = 1,216.87'$	$L = 152.56'$
$T = 615.02'$	$T = 78.65'$
$R = 3,398.32'$	$R = 254.30'$
$e = EXIST.$	$e = EXIST.$

★ PROPOSED SIGNAL
 FOR -LI- PROFILE, SEE SHEET NO. 28
 FOR -Y10- PROFILE, SEE SHEET NO. 31

5/14/2019
 9:55:59 AM
 C:\Users\jgibson\OneDrive\Documents\Design\U5748_EC.psh.25_FG.dgn
 Ligon Mill\900-CAD_GIS\910-CAD_NCDOT_TIP\Environmental\Design\U5748_EC.psh.25_FG.dgn