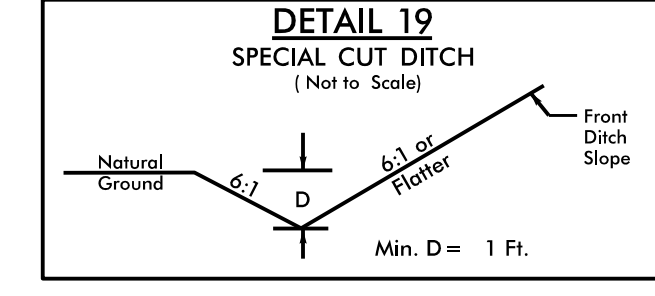
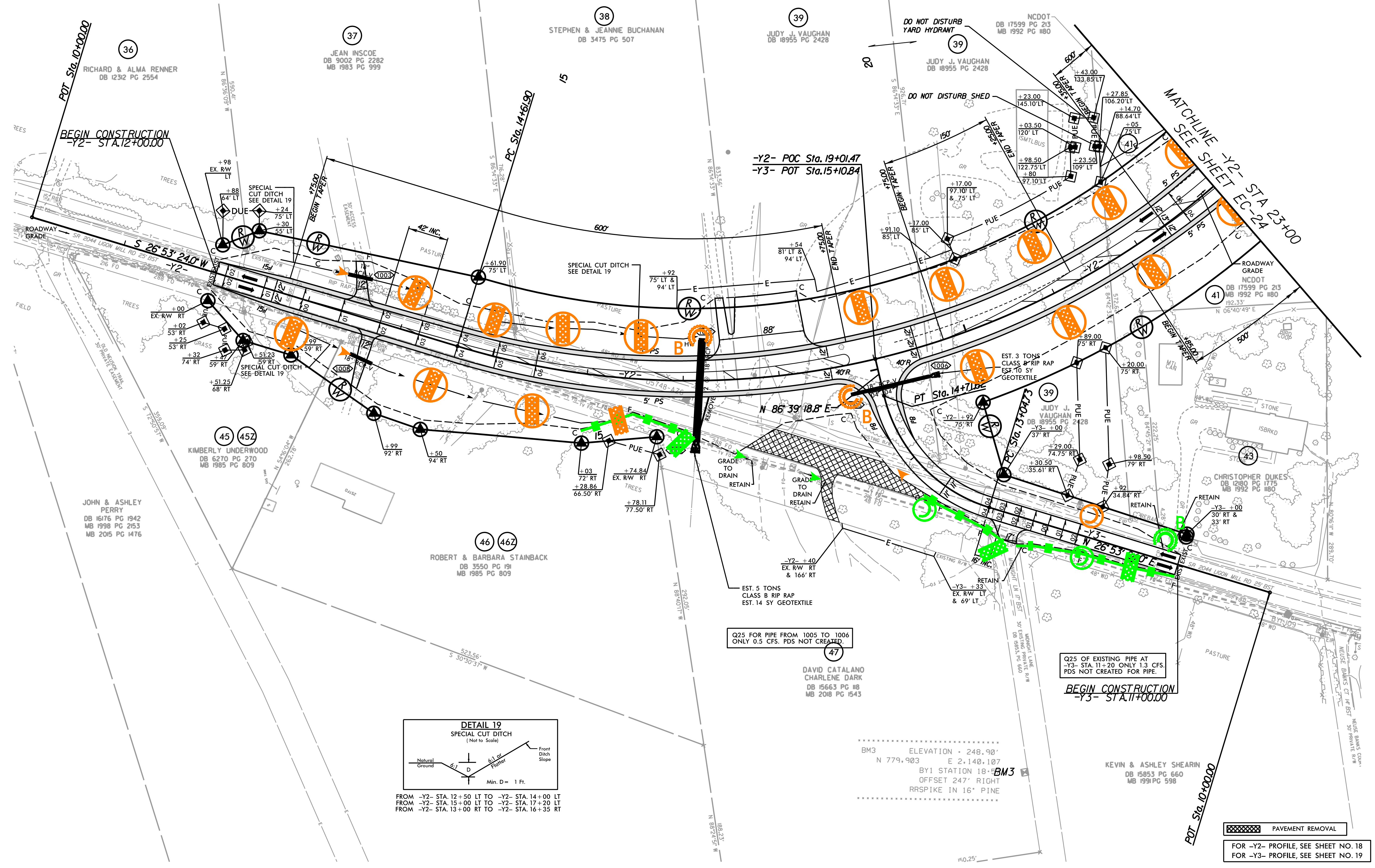


NAD 83 / N.A. 2011

NOTE: UTILIZE FABRIC INSERT INLET PROTECTION DEVICES IN LIEU OF ROCK INLET SEDIMENT TRAPS TYPE C IN AREAS WHERE WATER MAY POND ON ROAD OPEN TO LIVE TRAFFIC.

Place Matting for Erosion Control on Slope as Work Allows.
 -Y2- Sta. 18+50 LT to Sta. 23+00 LT
 -Y2- Sta. 18+50 RT to Sta. 19+00 RT
 -Y2- Sta. 20+00 RT to Sta. 23+50 RT
 -Y3- Sta. 14+00 LT to Sta. 15+00 LT
 -Y3- Sta. 14+00 RT to Sta. 15+00 RT



FROM -Y2- STA. 12+50 LT TO -Y2- STA. 14+00 LT
 FROM -Y2- STA. 15+00 LT TO -Y2- STA. 17+20 LT
 FROM -Y2- STA. 13+00 RT TO -Y2- STA. 16+35 RT

Q25 FOR PIPE FROM 1005 TO 1006 ONLY 0.5 CFS. PDS NOT CREATED.

DAVID CATALANO CHARLENE DARK DB 15663 PG 118 MB 2018 PG 1543

Q25 OF EXISTING PIPE AT -Y3- STA. 11+20 ONLY 1.3 CFS. PDS NOT CREATED FOR PIPE.

BM3 ELEVATION = 248.90'
 N 779.903 E 2.140.107
 BY1 STATION 18+50
 OFFSET 247' RIGHT
 RR SPIKE IN 16" PINE

KEVIN & ASHLEY SHEARIN DB 15853 PG 660 MB 1991 PG 598

PAVEMENT REMOVAL
 FOR -Y2- PROFILE, SEE SHEET NO. 18
 FOR -Y3- PROFILE, SEE SHEET NO. 19

5/14/19 9:55:14 AM \\60609754-1\1\900-CAD-GIS\910-CAD\70_NCDOT_TIP\Environment\Design\U5748_EC_psh23_FG.dgn