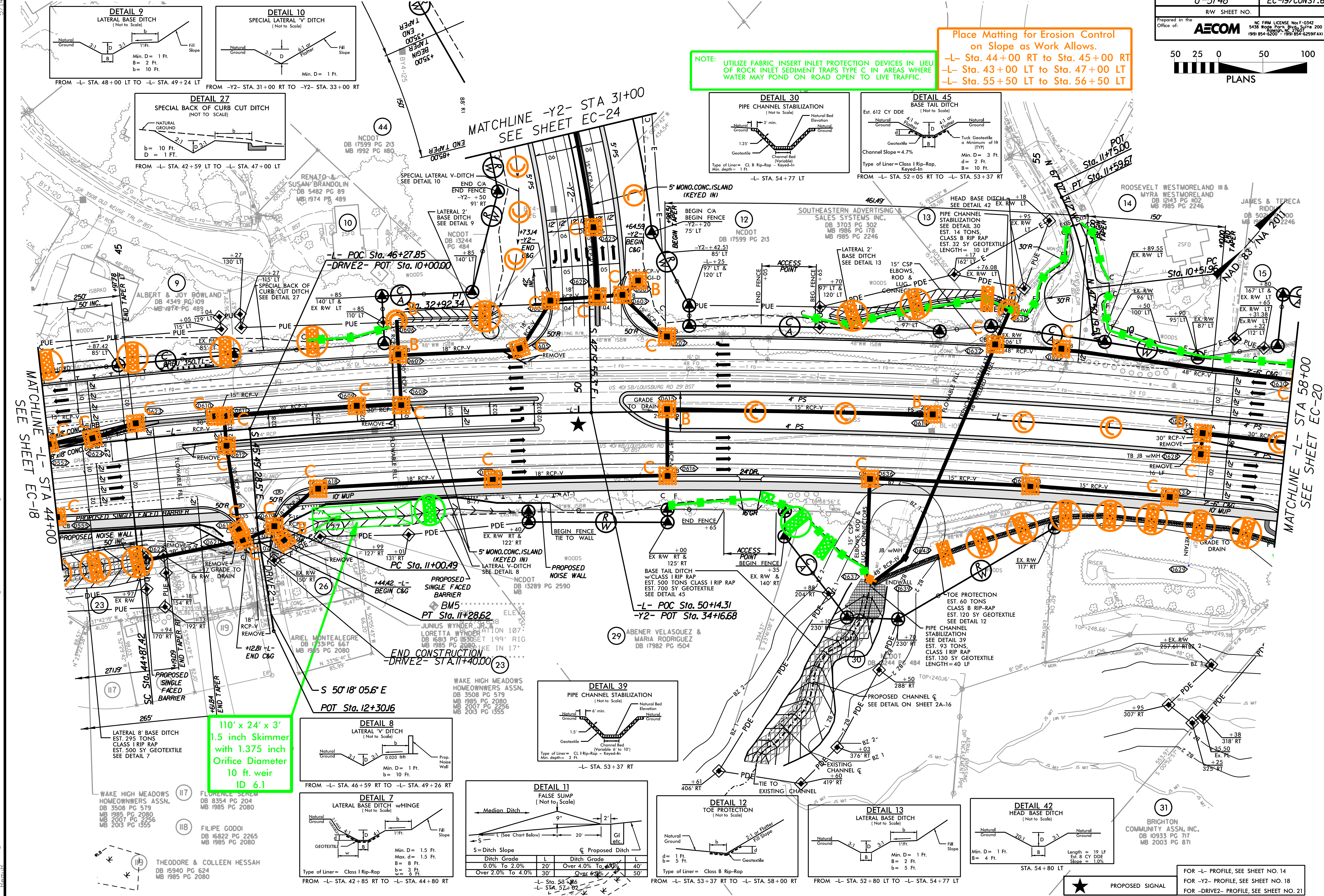


Place Matting for Erosion Control on Slope as Work Allows.

- L- Sta. 44+00 RT to Sta. 45+00 RT
- L- Sta. 43+00 LT to Sta. 47+00 LT
- L- Sta. 55+50 LT to Sta. 56+50 LT

NOTE: UTILIZE FABRIC INSERT INLET PROTECTION DEVICES IN LIEU OF ROCK INLET SEDIMENT TRAPS TYPE C IN AREAS WHERE WATER MAY POND ON ROAD OPEN TO LIVE TRAFFIC.



110' x 24' x 3'
1.5 inch Skimmer
with 1.375 inch
Orifice Diameter
10 ft. weir
ID 6.1

DETAIL 11 FALSE SLUMP (Not to Scale)

Median Ditch		Proposed Ditch	
L (See Chart Below)		L	
Ditch Grade	L	Ditch Grade	L
0.0% To 2.0%	20'	Over 4.0% To 6.0%	40'
Over 2.0% To 4.0%	30'	Over 6.0%	50'

★ PROPOSED SIGNAL

FOR -L- PROFILE, SEE SHEET NO. 14
FOR -Y2- PROFILE, SEE SHEET NO. 18
FOR -DRIVE2- PROFILE, SEE SHEET NO. 21

5/14/2019
 10:54:41 AM
 G:\560609754-105441\11\500-CAD_GIS\910-CAD_770-NCDDOT_TIP\Environmental\Design\U5748_EC_psk19_FC.dgn