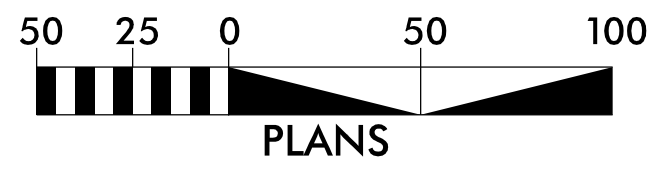


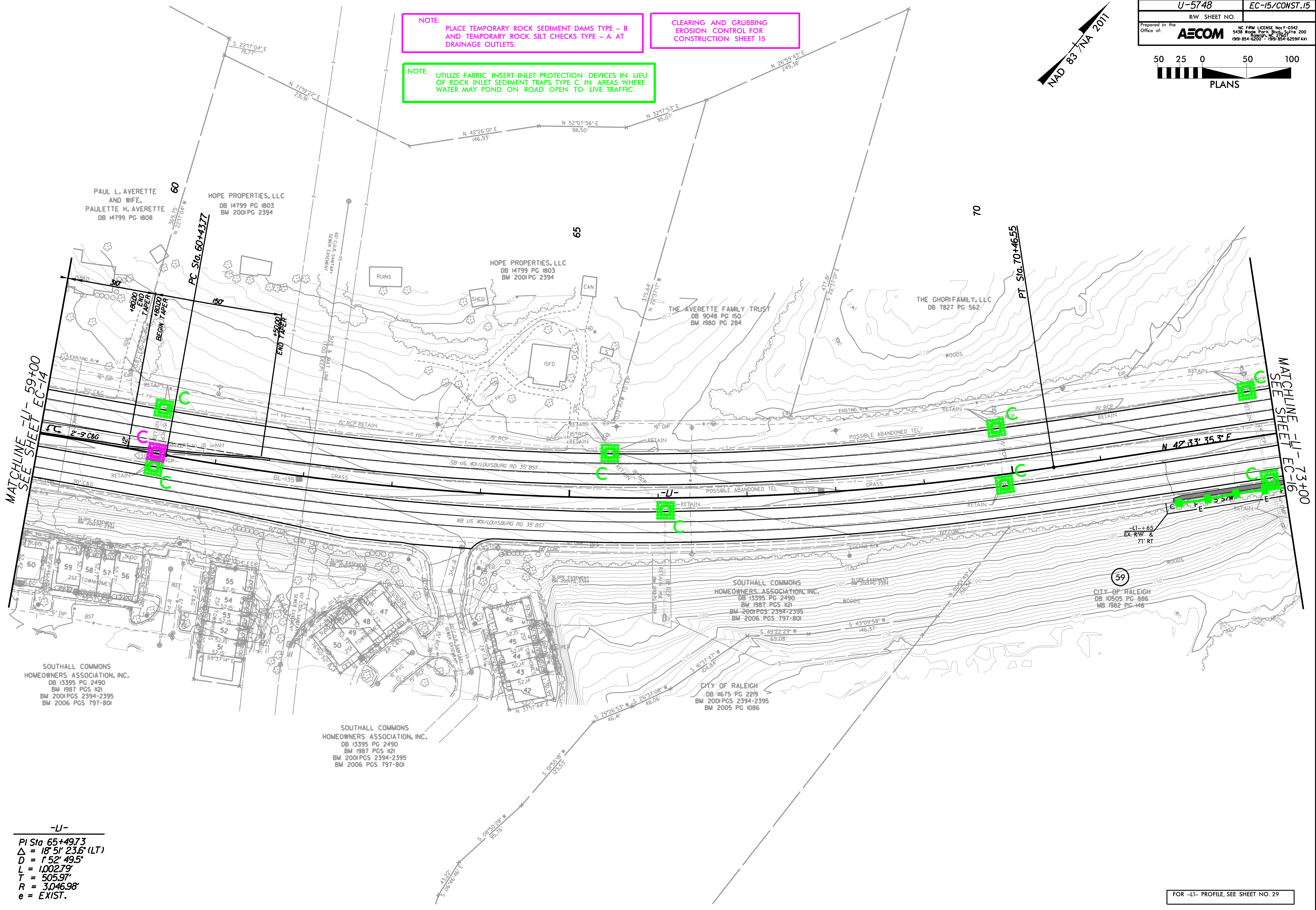
PROJECT REFERENCE NO.	SHEET NO.
U-5748	EC-15/CONST.15
RW SHEET NO.	
Prepared in the Office of: AECOM <small>NC FIRM LICENSE No. F-0342 5438 Hope Park Blvd, Suite 200 Raleigh, NC 27607 (919) 854-6200 • (919) 854-6259(FAX)</small>	



NOTE: PLACE TEMPORARY ROCK SEDIMENT DAMS TYPE - B AND TEMPORARY ROCK SILT CHECKS TYPE - A AT DRAINAGE OUTLETS.

CLEARING AND GRUBBING EROSION CONTROL FOR CONSTRUCTION SHEET 15

NOTE: UTILIZE FABRIC INSERT INLET PROTECTION DEVICES IN LIEU OF ROCK INLET SEDIMENT TRAPS TYPE C IN AREAS WHERE WATER MAY POND ON ROAD OPEN TO LIVE TRAFFIC.



-LI-
 PI Sta 65+497.3
 $\Delta = 18^\circ 51' 23.6''$ (LT)
 $D = 1,002.79'$
 $T = 505.97'$
 $R = 3,046.98'$
 $e = \text{EXIST.}$

FOR -LI- PROFILE, SEE SHEET NO. 29

5/14/2011 9:53:20 AM Ligon Mill\900-CAD_GIS\910-CAD_GIS\910-CAD70.NC001_TIP\Environmental\Design\U5748_EC_psk15_CG.dgn