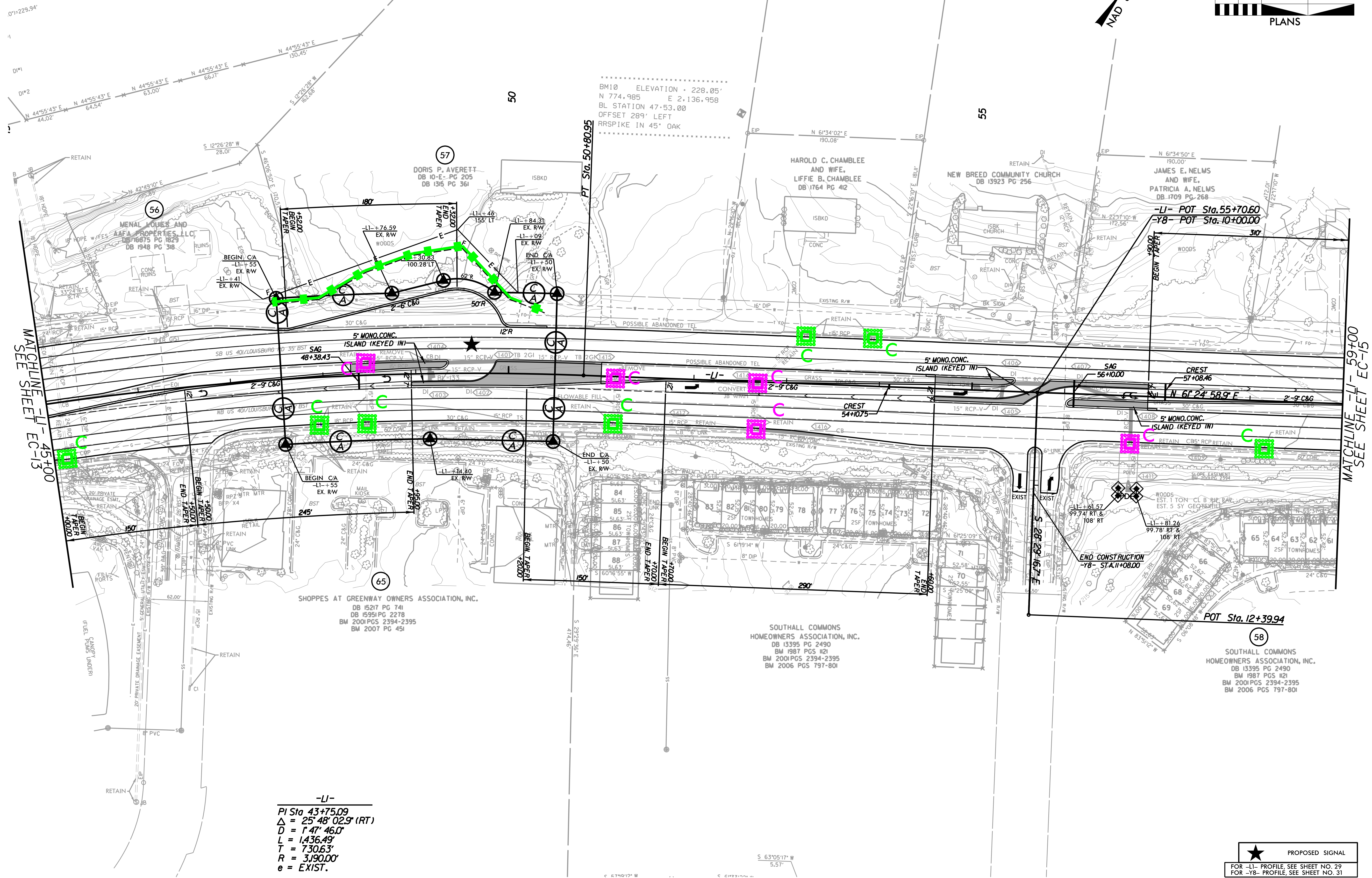
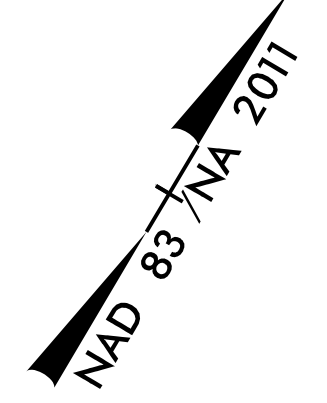


NOTE: UTILIZE FABRIC INSERT INLET PROTECTION DEVICES IN LIEU OF ROCK INLET SEDIMENT TRAPS TYPE C IN AREAS WHERE WATER MAY POND ON ROAD OPEN TO LIVE TRAFFIC.

NOTE: PLACE TEMPORARY ROCK SEDIMENT DAMS TYPE - B AND TEMPORARY ROCK SILT CHECKS TYPE - A AT DRAINAGE OUTLETS.

CLEARING AND GRUBBING EROSION CONTROL FOR CONSTRUCTION SHEET 14



MATCHLINE -LI- 45+00
SEE SHEET EC-13

MATCHLINE -LI- 59+00
SEE SHEET EC-15

-LI-
 PI Sta 43+75.09
 $\Delta = 25^\circ 48' 02.9''$ (RT)
 $D = 1' 47' 46.0''$
 $L = 1,436.49'$
 $T = 730.63'$
 $R = 3,190.00'$
 $e = EXIST.$

★ PROPOSED SIGNAL
 FOR -LI- PROFILE, SEE SHEET NO. 29
 FOR -YB- PROFILE, SEE SHEET NO. 31

5/14/2011 9:52:55 AM I:\500-CAD-GIS\910-CAD70-NCDDT-TIP\Environmental\Design\U5748-EC-psk14-CG.dgn