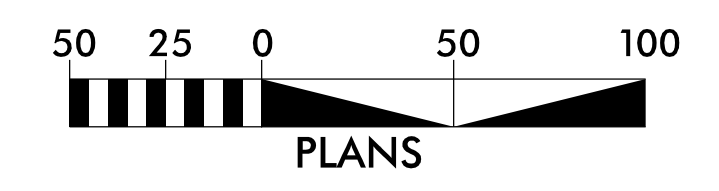
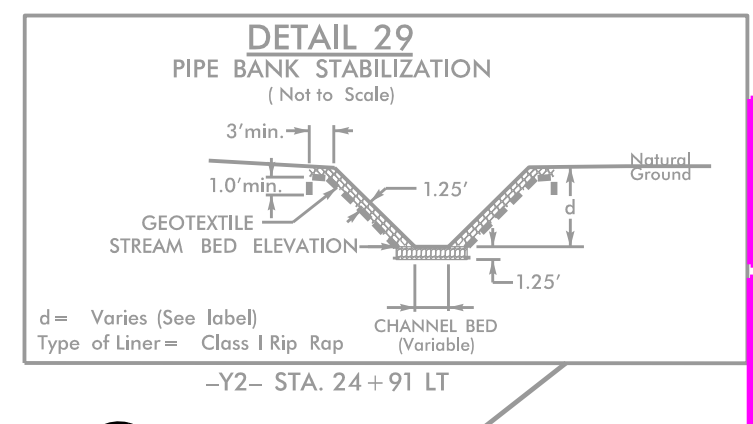
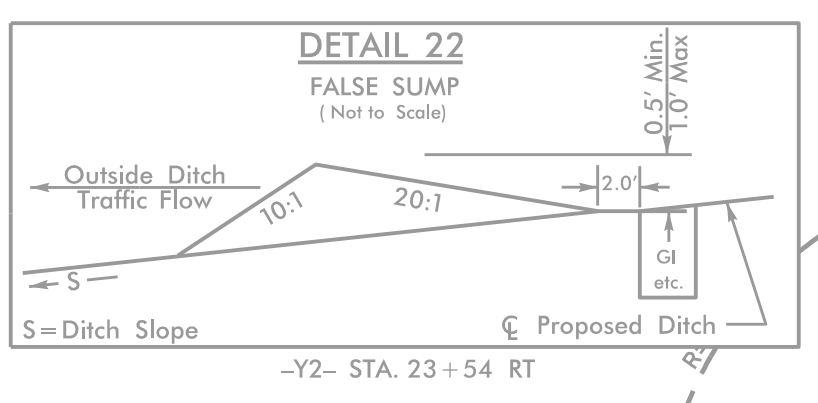
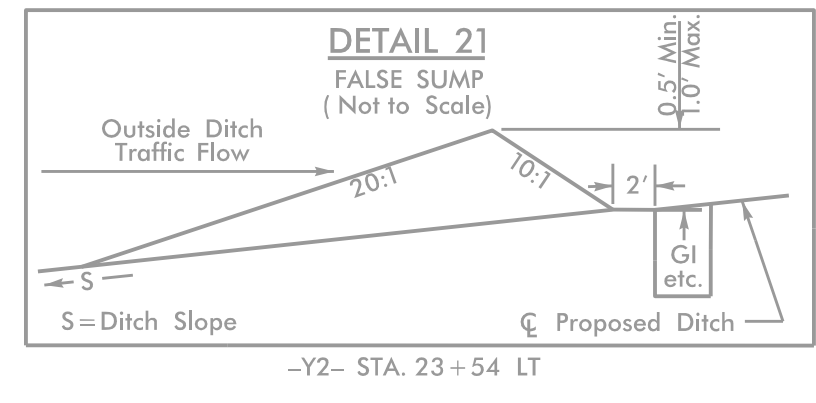
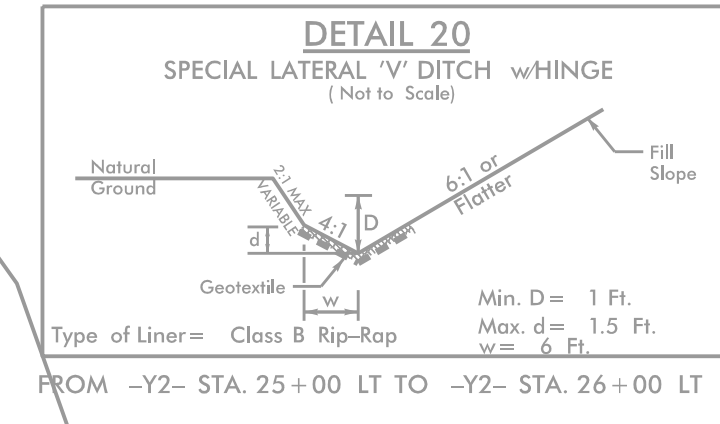


PROJECT REFERENCE NO.	SHEET NO.
U-5748	EC-II/CONST.II
RW SHEET NO.	
Prepared in the Office of: AECOM	
NC FIRM LICENSE No. F-0342 5438 Roper Park, Suite 200 Raleigh, NC 27617 (919) 854-6200 • (919) 854-6259 (FAX)	



NAD 83 / NA 2011

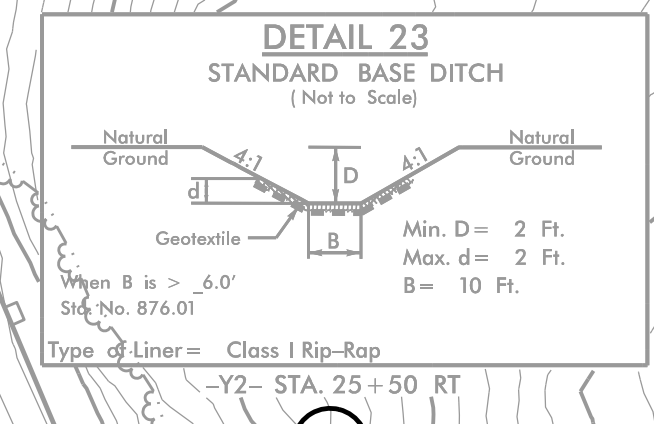
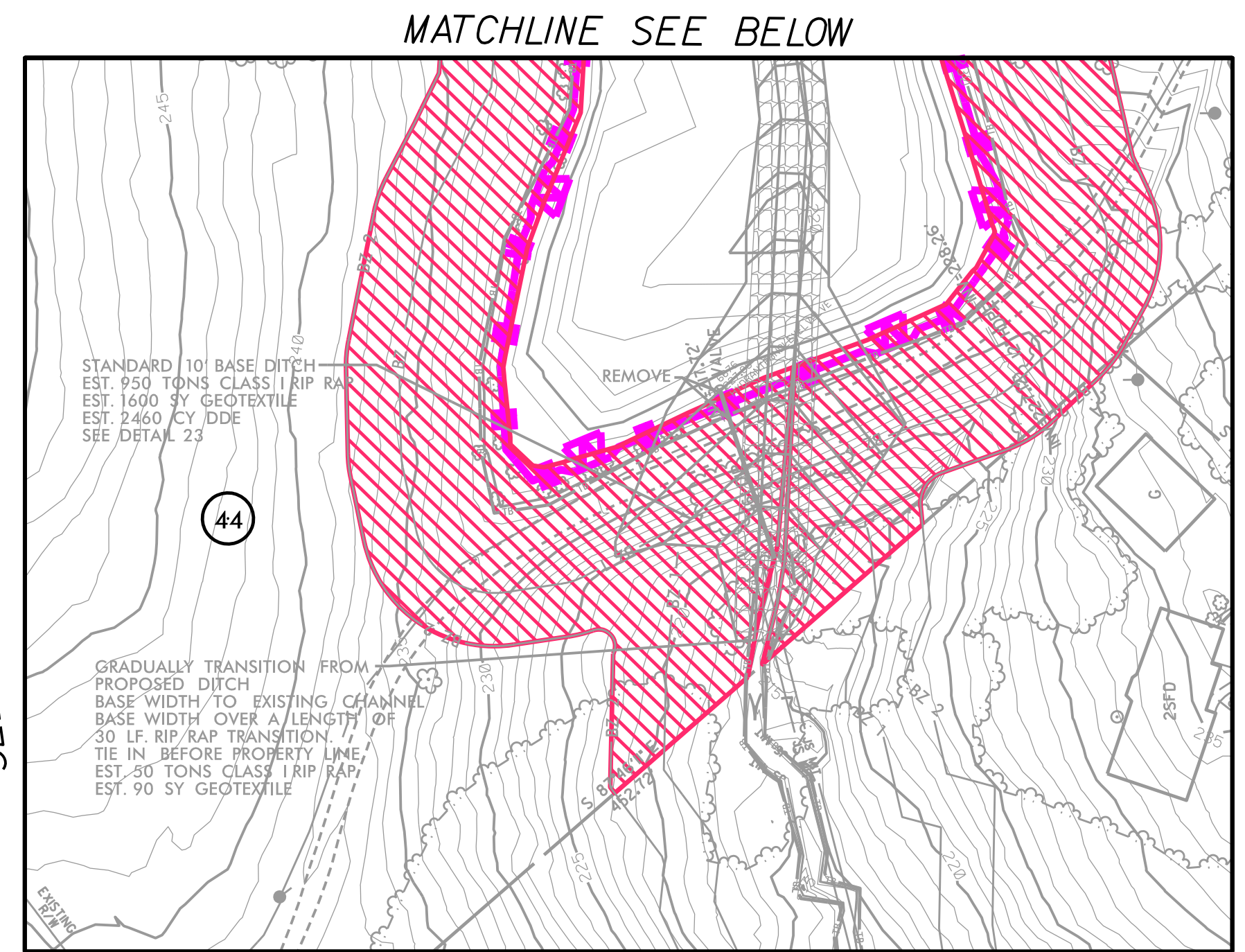
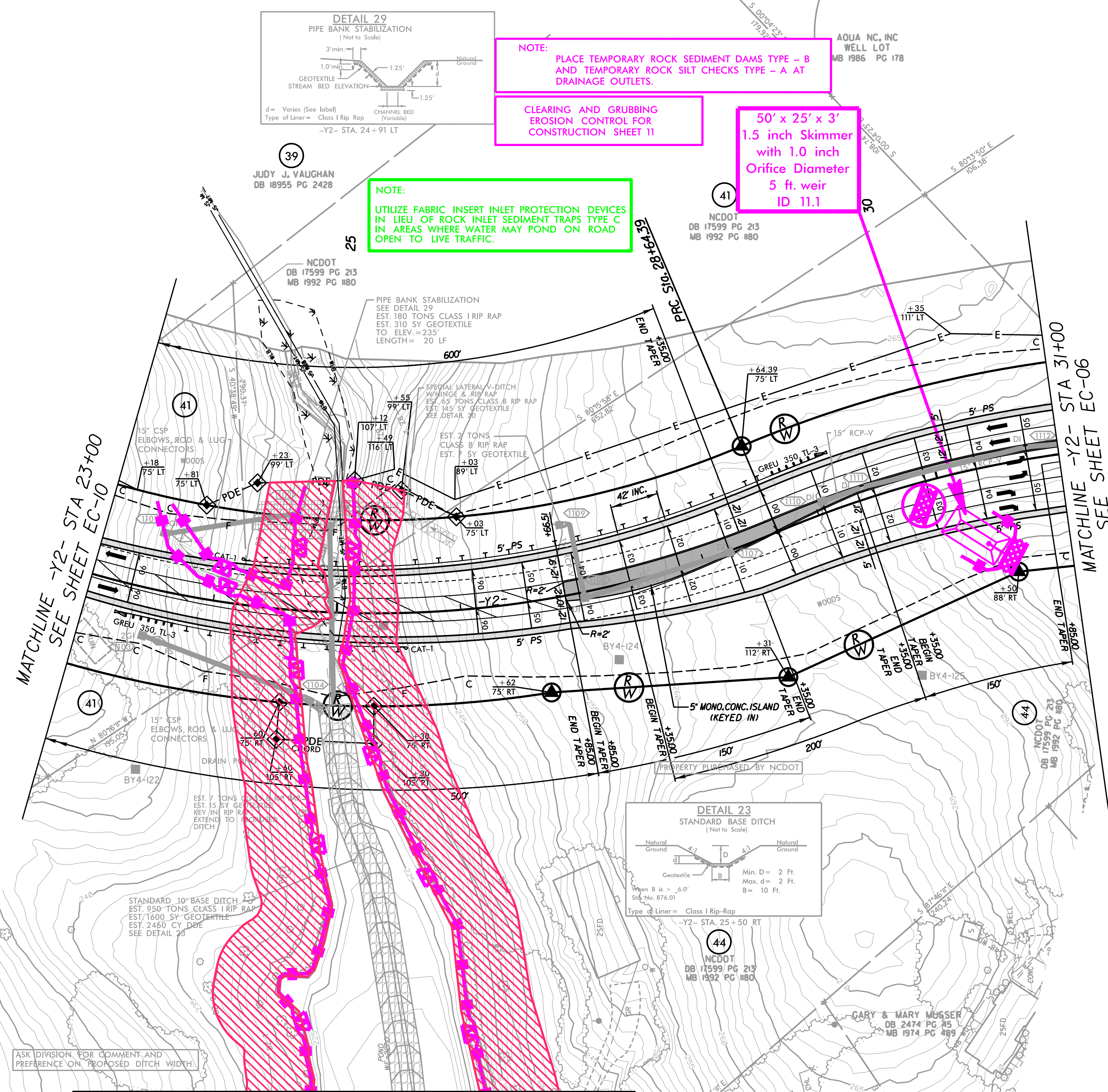


NOTE: PLACE TEMPORARY ROCK SEDIMENT DAMS TYPE - B AND TEMPORARY ROCK SILT CHECKS TYPE - A AT DRAINAGE OUTLETS.

CLEARING AND GRUBBING EROSION CONTROL FOR CONSTRUCTION SHEET 11

50' x 25' x 3' 1.5 inch Skimmer with 1.0 inch Orifice Diameter 5 ft. weir ID 11.1

NOTE: UTILIZE FABRIC INSERT PROTECTION DEVICES IN LIEU OF ROCK INLET SEDIMENT TRAPS TYPE C IN AREAS WHERE WATER MAY POND ON ROAD OPEN TO LIVE TRAFFIC.



ASK DIVISION FOR COMMENT AND PREFERENCE ON PROPOSED DITCH WIDTH.

SEE INSET (THIS SHEET)

5/14/99
60609754-1
Ligon Mill 1900-CAD GIS 910 CAD 70 NCDOT_TIP\Environmental\Design\U5748_EC_psh11_CD.dgn