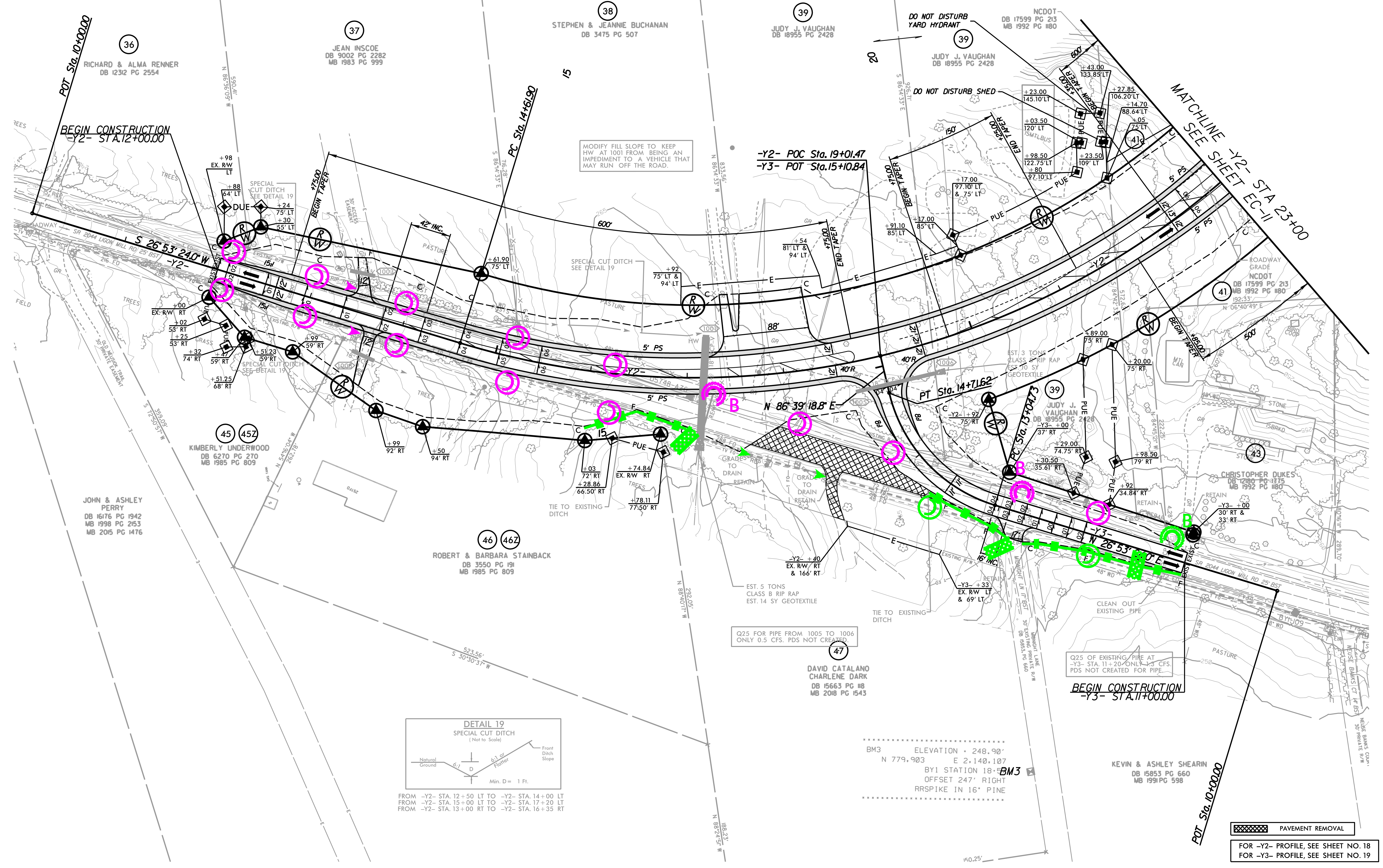


NOTE: UTILIZE FABRIC INSERT INLET PROTECTION DEVICES IN LIEU OF ROCK INLET SEDIMENT TRAPS TYPE C IN AREAS WHERE WATER MAY POND ON ROAD OPEN TO LIVE TRAFFIC.

NOTE: PLACE TEMPORARY ROCK SEDIMENT DAMS TYPE - B AND TEMPORARY ROCK SILT CHECKS TYPE - A AT DRAINAGE OUTLETS.

NOTE: CLEARING AND GRUBBING EROSION CONTROL FOR CONSTRUCTION SHEET 10

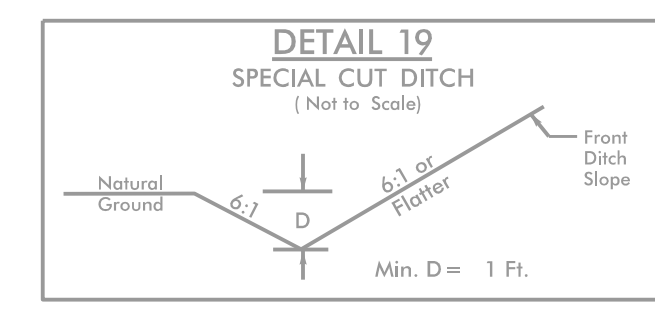
NAD 83/NA 2011



MODIFY FILL SLOPE TO KEEP HW AT 100' FROM BEING AN IMPEDIMENT TO A VEHICLE THAT MAY RUN OFF THE ROAD.

-Y2- POC Sta. 19+01.47
-Y3- POT Sta. 15+10.84

BEGIN CONSTRUCTION
-Y3- STA. 11+00.00



FROM -Y2- STA. 12+50 LT TO -Y2- STA. 14+00 LT
FROM -Y2- STA. 15+00 LT TO -Y2- STA. 17+20 LT
FROM -Y2- STA. 13+00 RT TO -Y2- STA. 16+35 RT

BM3 ELEVATION = 248.90'
N 779.903 E 2.140.107
BY1 STATION 18+50
OFFSET 247' RIGHT
RRSPIKE IN 16' PINE

PAVEMENT REMOVAL
FOR -Y2- PROFILE, SEE SHEET NO. 18
FOR -Y3- PROFILE, SEE SHEET NO. 19

5/14/2019 9:15:46 AM \\50609754-3\1\500-CAD_GIS\910-CAD_70\NCDOT_1\TIP\Environmental\Design\U5748_EC_psk10_C0.dgn