



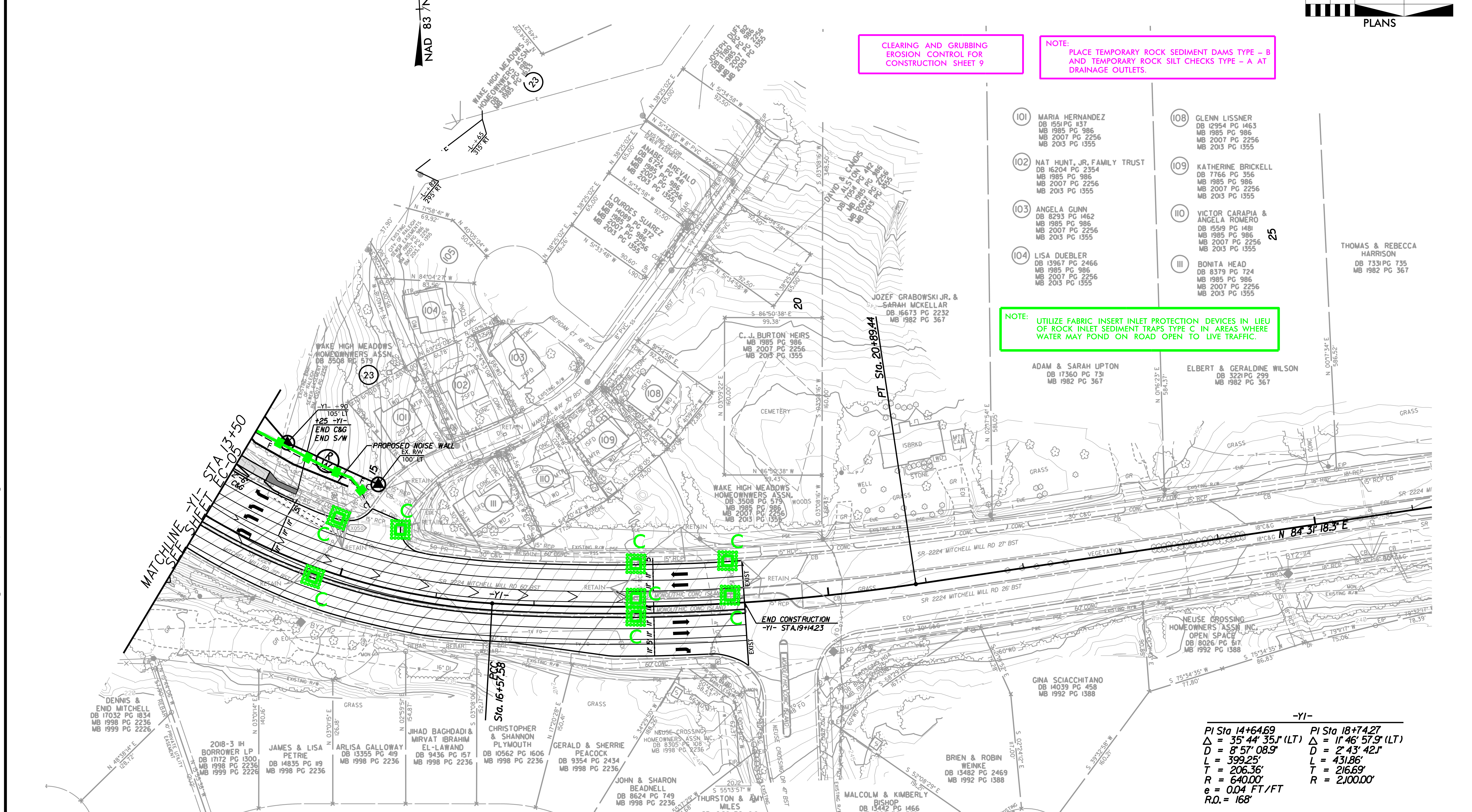
NAD 83 / NA 2011

CLEARING AND GRUBBING
EROSION CONTROL FOR
CONSTRUCTION SHEET 9

NOTE:
PLACE TEMPORARY ROCK SEDIMENT DAMS TYPE - B
AND TEMPORARY ROCK SILT CHECKS TYPE - A AT
DRAINAGE OUTLETS.

- 101 MARIA HERNANDEZ
DB 1551 PG 137
MB 1985 PG 986
MB 2007 PG 2256
MB 2013 PG 1355
- 102 NAT HUNT, JR. FAMILY TRUST
DB 16204 PG 2354
MB 1985 PG 986
MB 2007 PG 2256
MB 2013 PG 1355
- 103 ANGELA GUNN
DB 8293 PG 1462
MB 1985 PG 986
MB 2007 PG 2256
MB 2013 PG 1355
- 104 LISA DUEBLER
DB 13967 PG 2466
MB 1985 PG 986
MB 2007 PG 2256
MB 2013 PG 1355
- 108 GLENN LISSNER
DB 12954 PG 1463
MB 1985 PG 986
MB 2007 PG 2256
MB 2013 PG 1355
- 109 KATHERINE BRICKELL
DB 7766 PG 356
MB 1985 PG 986
MB 2007 PG 2256
MB 2013 PG 1355
- 110 VICTOR CARAPIA & ANGELA ROMERO
DB 15519 PG 1481
MB 1985 PG 986
MB 2007 PG 2256
MB 2013 PG 1355
- 111 BONITA HEAD
DB 8379 PG 724
MB 1985 PG 986
MB 2007 PG 2256
MB 2013 PG 1355

NOTE:
UTILIZE FABRIC INSERT INLET PROTECTION DEVICES IN LIEU
OF ROCK INLET SEDIMENT TRAPS TYPE C IN AREAS WHERE
WATER MAY POND ON ROAD OPEN TO LIVE TRAFFIC.



-YI-	
PI Sta 14+64.69	PI Sta 18+74.27
$\Delta = 35' 44' 35.1''$ (LT)	$\Delta = 11' 46' 57.9''$ (LT)
$D = 8' 57' 08.9''$	$D = 2' 43' 42.1''$
$L = 399.25'$	$L = 431.86'$
$T = 206.36'$	$T = 216.69'$
$R = 640.00'$	$R = 2,100.00'$
$e = 0.04$ FT/FT	
$R.O. = 168'$	

FOR -YI- PROFILE, SEE SHEET NO. 17

5/14/2011
 9:50:50 AM
 I:\60609754\115548 Ligon Mill\900-CAD_GIS\910-CAD_TIP\Environmental\Design\U5748_EC_psh09_Co.dgn