

**ENVIRONMENTALLY SENSITIVE AREA** SEE PROJECT SPECIAL PROVISIONS

**NOTE:** PLACE TEMPORARY ROCK SEDIMENT DAMS TYPE - B AND TEMPORARY ROCK SILT CHECKS TYPE - A AT DRAINAGE OUTLETS.

CLEARING AND GRUBBING EROSION CONTROL FOR CONSTRUCTION SHEET 5

INSTALL PIPE(S) IN JURISDICTIONAL AREAS WITHOUT IMPACTING STREAM UNTIL AREA STABILIZED AND ACCORDING TO NCDOT BEST MANAGEMENT PRACTICES FOR CONSTRUCTION AND MAINTENANCE ACTIVITIES MANUAL.

**NOTE:** UTILIZE FABRIC INSERT INLET PROTECTION DEVICES IN LIEU OF ROCK INLET SEDIMENT TRAPS TYPE C IN AREAS WHERE WATER MAY POND ON ROAD OPEN TO LIVE TRAFFIC.

48' x 24' x 3'  
1.5 inch Skimmer  
with 0.875inch  
Orifice Diameter  
4 ft. weir  
ID 5.1

SEE INSET (THIS SHEET)  
MATCHLINE -Y4- STA 12+00

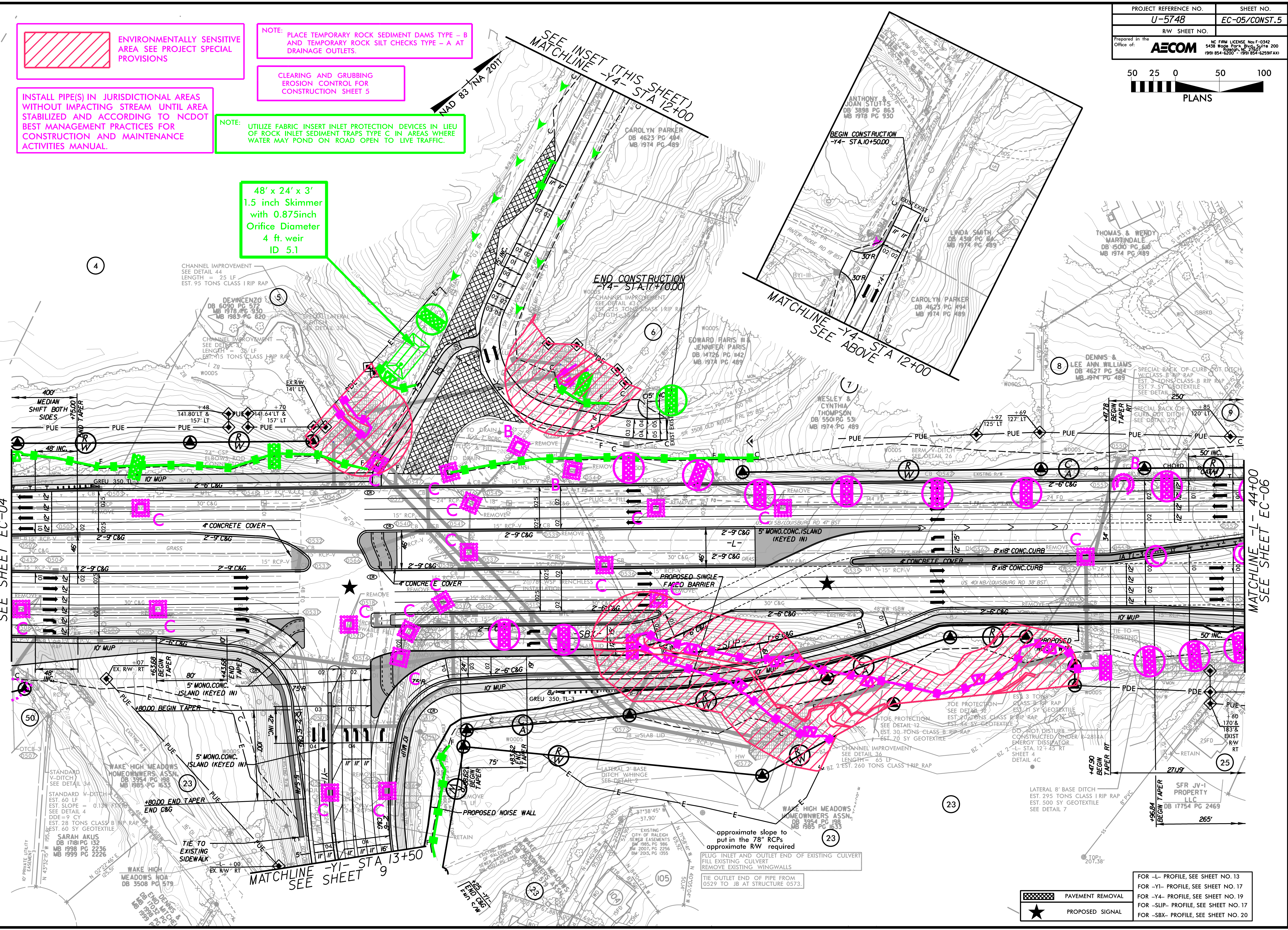
BEGIN CONSTRUCTION  
-Y4- STA 10+50.00  
MATCHLINE -Y4- STA 12+00  
SEE ABOVE

END CONSTRUCTION  
-Y4- STA 17+00.00

MATCHLINE -L- 30+00  
SEE SHEET EC-04

MATCHLINE -L- 44+00  
SEE SHEET EC-06

5/14/09  
60609754-1-15-09 AM  
G:\60609754-1-15-09 AM\11\900-CAD-GIS-910-CAD\70-NC001-TIP-Environmental\Design\U5748-EC-psh05-Cc.dgn



approximate slope to  
put in the 78" RCPs  
approximate RW required

PLUG INLET AND OUTLET END OF EXISTING CULVERT  
FILL EXISTING CULVERT  
REMOVE EXISTING WINGWALLS

TIE OUTLET END OF PIPE FROM  
0529 TO JB AT STRUCTURE 0573.

- PAVEMENT REMOVAL
- PROPOSED SIGNAL
- FOR -L- PROFILE, SEE SHEET NO. 13
- FOR -Y1- PROFILE, SEE SHEET NO. 17
- FOR -Y4- PROFILE, SEE SHEET NO. 19
- FOR -SLIP- PROFILE, SEE SHEET NO. 17
- FOR -SBX- PROFILE, SEE SHEET NO. 20