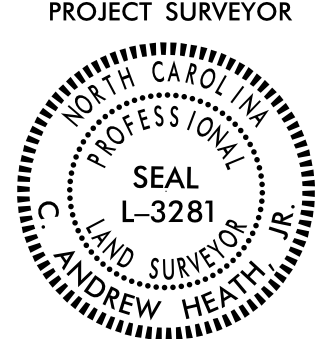


PROJECT REFERENCE NO.	SHEET NO.
U-5748	RW06
Location and Surveys	
NIV5	
<small>NIV5 ENGINEERS & CONSULTANTS, INC. 3300 REGENCY PARKWAY, SUITE 100 CARY, NC 27518 P-919.851.1912 www.NIV5.com NC License # 1333 Member: NCEM Engineers & Consultants</small>	
PROJECT SURVEYOR	
	
DOCUMENT NOT CONSIDERED FINAL UNLESS ALL SIGNATURES COMPLETED	

I, C. ANDREW HEATH, JR., a Professional Land Surveyor in the state of North Carolina hereby certify to the best of my knowledge and belief that the following work, Itemized Base map Compilation, R/W Staking performed under my responsible charge meet NCDOT Survey Standards as directed in the NCDOT Location & Surveys guidelines and procedures.

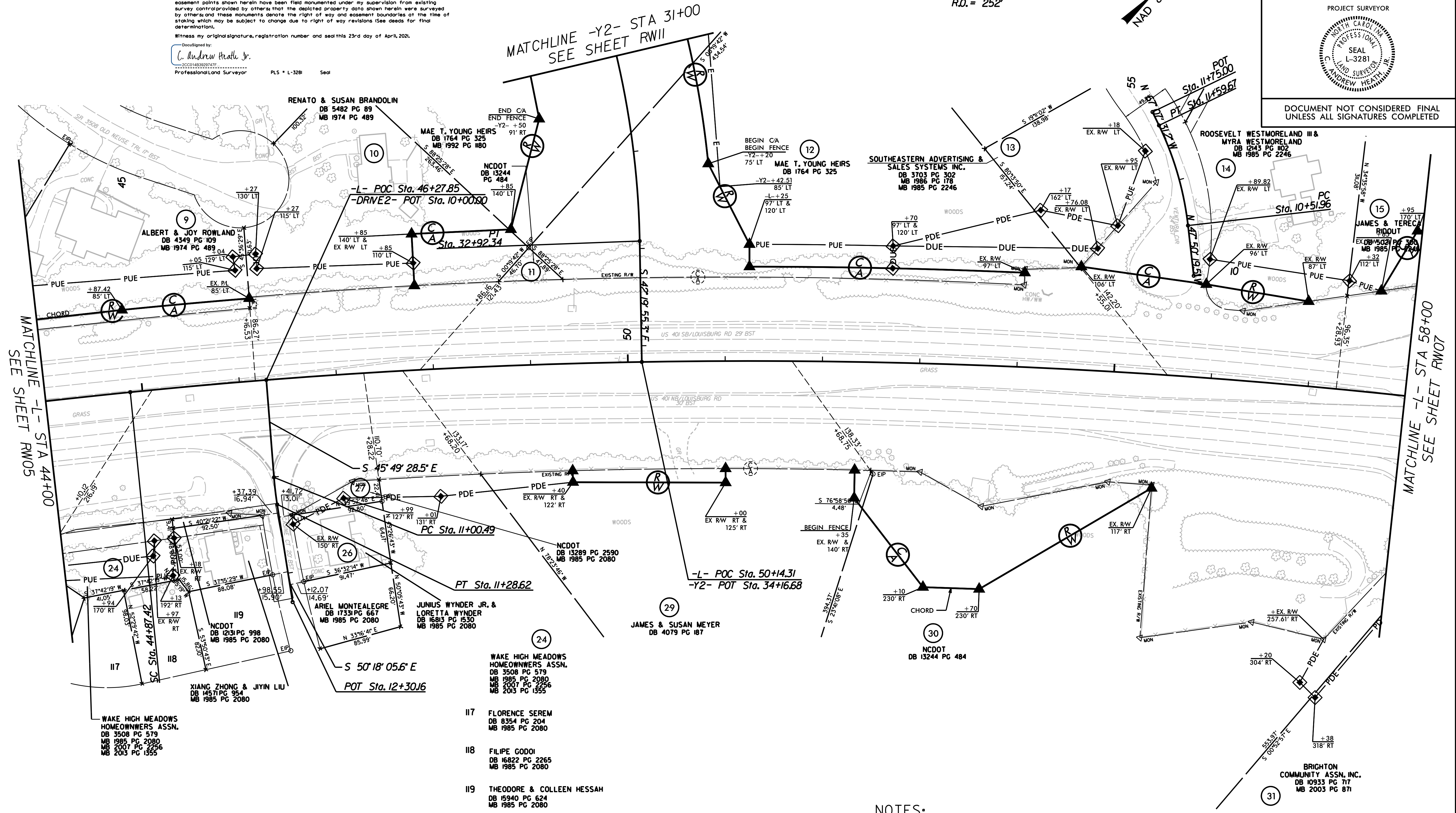
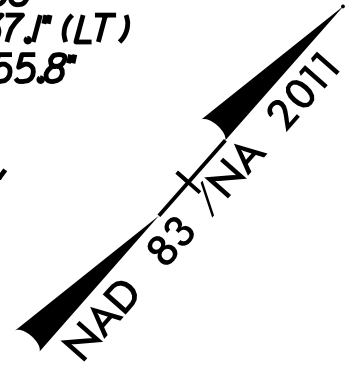
I further certify that the data compiled came from available surveys/mapping performed by others and provided to me by NCDOT and do not certify to the accuracy or quality of the individual data sources.

I further certify that the right of way and permanent easement points shown herein and outlined in the tables shown hereon localized coordinates, stationing/feet have been checked and are accurate representations of the right of way and permanent easement points depicted on the corresponding highway plans. I also certify that the right of way and permanent easement points shown herein have been field monumented under my supervision from existing survey control provided by others that the depicted property data shown herein were surveyed by others and these monuments denote the right of way and easement boundaries at the time of staking which may be subject to change due to right of way revisions (See deeds for final determination).

Witness my original signature, registration number and seal this 23rd day of April, 2021.

Designed by:
C. Andrew Heath Jr.
20001483029747F
 Professional Land Surveyor PLS * L-3281 Seal

-L-	-Y2-	-DRIVE2-
PI Sta 44+20.76	PI Sta 52+57.33	PI Sta 30+82.49
θs = 0° 54' 13.4"	Δ = 13° 50' 51.7" (RT)	Δ = 27° 14' 39.9" (RT)
Ls = 200.00'	D = 0° 54' 13.4"	D = 6° 21' 58.5"
LT = 133.34'	L = 1532.30'	L = 427.95'
ST = 66.67'	T = 769.90'	T = 218.10'
	R = 6,340.00'	R = 900.00'
	e = RC	e = 0.06 FT/FT
		R.O. = 252'



- 24 WAKE HIGH MEADOWS HOMEOWNERS ASSN. DB 3508 PG 579 MB 1985 PG 2080 MB 2007 PG 2256 MB 2013 PG 1555
- 26 ARIEL MONTEALEGRE DB 1731 PG 567 MB 1985 PG 2080
- 27 JUNIUS WYNDER JR. & LORETTA WYNDER DB 1683 PG 1530 MB 1985 PG 2080
- 29 JAMES & SUSAN MEYER DB 4079 PG 187
- 117 FLORENCE SEREM DB 8354 PG 204 MB 1985 PG 2080
- 118 FILIPE GODOI DB 16822 PG 2265 MB 1985 PG 2080
- 119 THEODORE & COLLEEN HESSAH DB 15940 PG 624 MB 1985 PG 2080

NOTES:

1. IF FURTHER INFORMATION REGARDING PROJECT CONTROL IS NEEDED, PLEASE CONTACT THE LOCATION AND SURVEYS UNIT.
2. PROJECT CONTROL WAS ESTABLISHED USING GNSS, THE GLOBAL NAVIGATION SATELLITE SYSTEM.
3. RIGHT OF WAY MONUMENTATION ESTABLISHED FROM 03-25-21 TO 04-19-21.

REVISIONS

G:\24-APR-2021\15713021-2021\01415\SURV-rw_sheets\U5748_1s_rw06.dgn
 6/16/2021 10:14:15 AM AT NCDOT\ITL\DAVID