

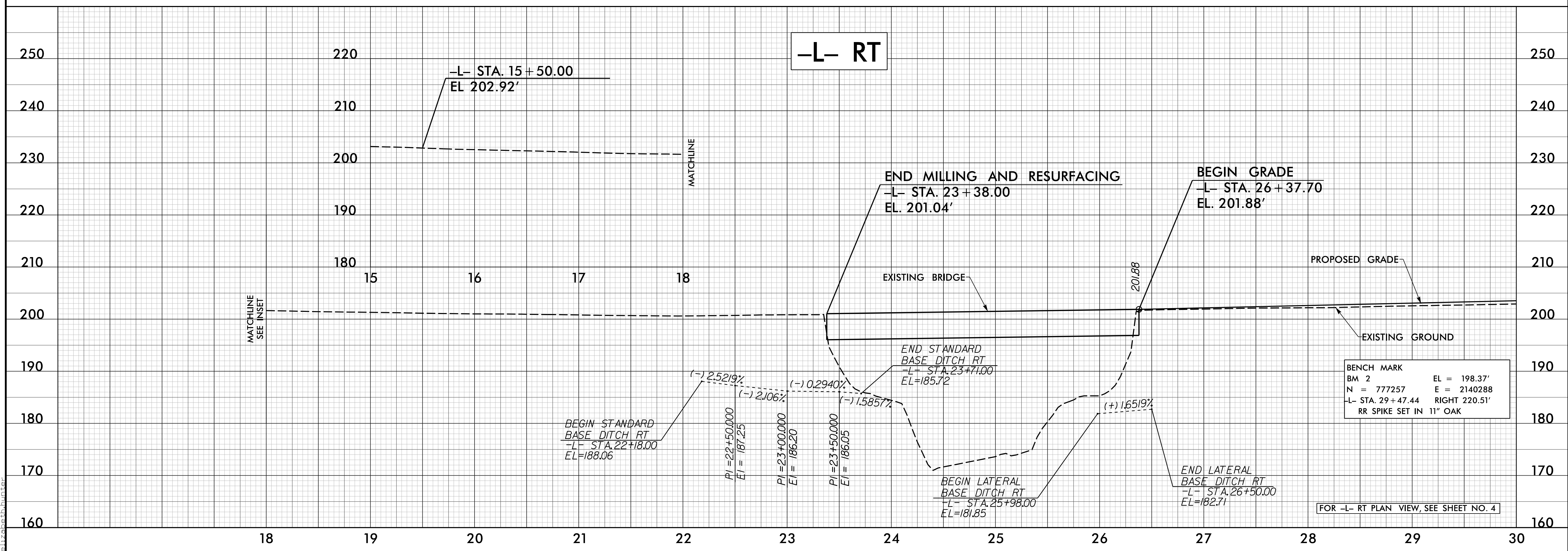
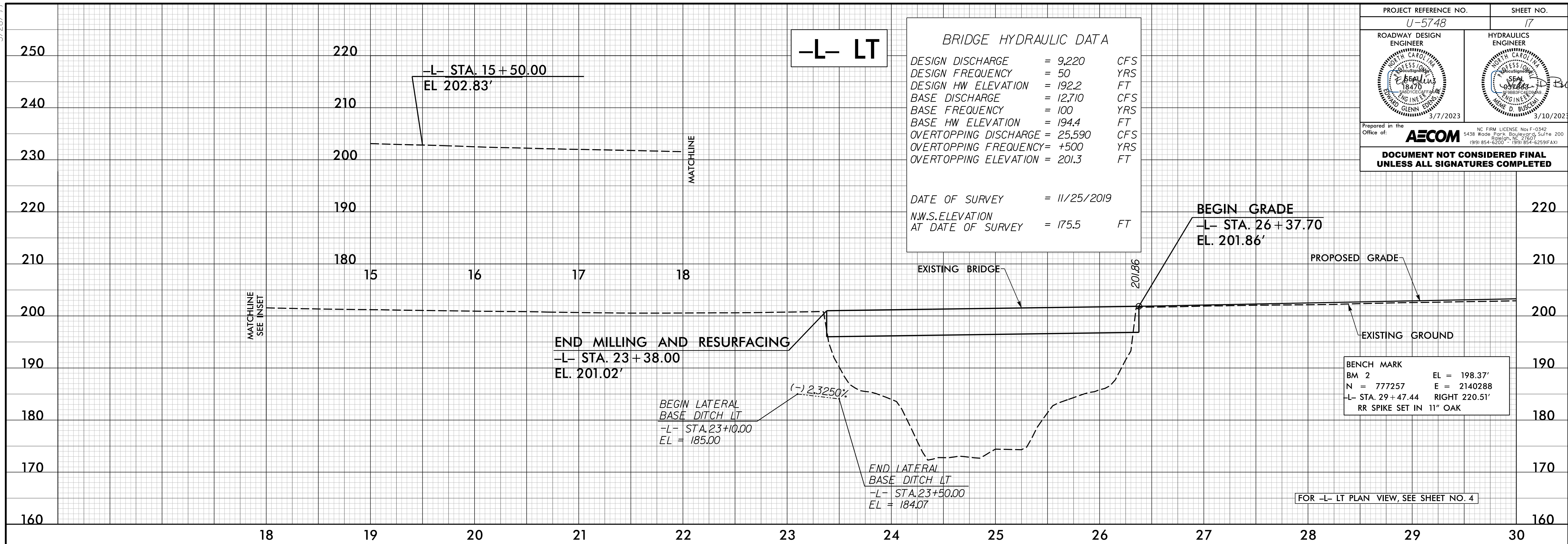
5/28/99

PROJECT REFERENCE NO. <i>U-5748</i>	SHEET NO. <i>17</i>
ROADWAY DESIGN ENGINEER <i>[Signature]</i> 3/7/2023	HYDRAULICS ENGINEER <i>[Signature]</i> 3/10/2023
Prepared in the Office of: AECOM NC FIRM LICENSE No. F-0342 5438 Wade Park Boulevard, Suite 200 Raleigh, NC 27607 (919) 854-6200 • (919) 854-6259(FAX)	
DOCUMENT NOT CONSIDERED FINAL UNLESS ALL SIGNATURES COMPLETED	

BRIDGE HYDRAULIC DATA

DESIGN DISCHARGE = 9,220 CFS
 DESIGN FREQUENCY = 50 YRS
 DESIGN HW ELEVATION = 192.2 FT
 BASE DISCHARGE = 12,710 CFS
 BASE FREQUENCY = 100 YRS
 BASE HW ELEVATION = 194.4 FT
 OVERTOPPING DISCHARGE = 25,590 CFS
 OVERTOPPING FREQUENCY = +500 YRS
 OVERTOPPING ELEVATION = 201.3 FT

DATE OF SURVEY = 11/25/2019
 N.W.S. ELEVATION AT DATE OF SURVEY = 175.5 FT



1/5/2023 10:48:23 am elizabeth.hunter