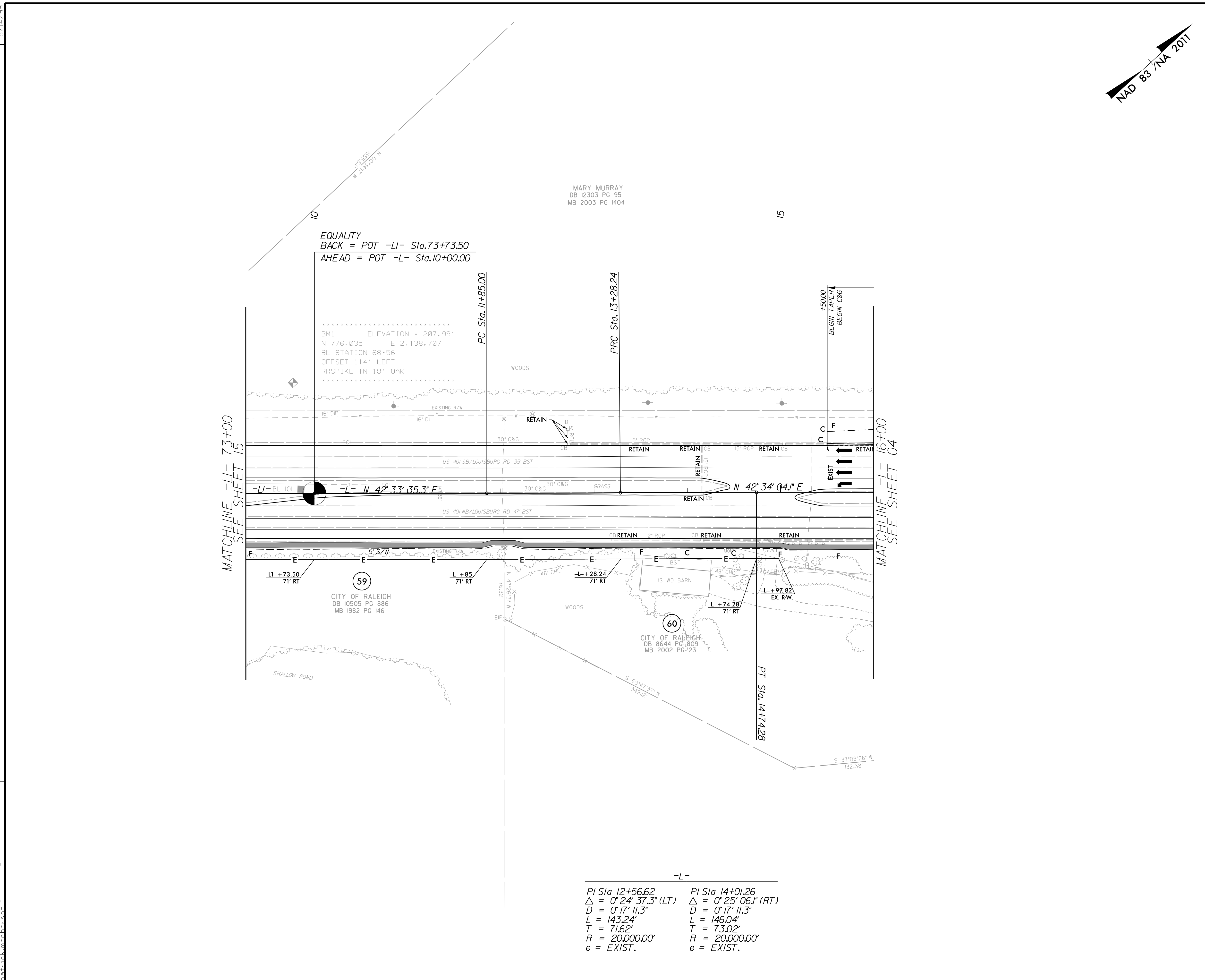


5/14/99

REVISIONS

2/3/2023  
 162748\_rdu\_psh16.dgn  
 patrick.moehrsen



MATCHLINE -L- 73+00  
SEE SHEET 15

MATCHLINE -L- 16+00  
SEE SHEET 04

EQUALITY  
 BACK = POT -L- Sta.73+73.50  
 AHEAD = POT -L- Sta.10+00.00

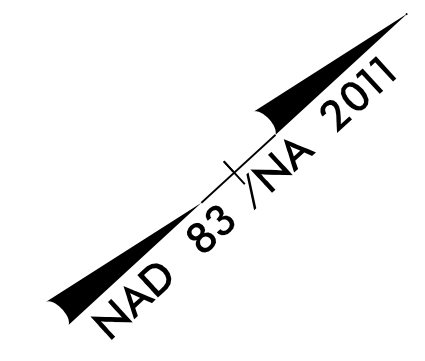
.....  
 BM1 ELEVATION = 207.99'  
 N 776.035 E 2.138.707  
 BL STATION 68+56  
 OFFSET 114' LEFT  
 RR SPIKE IN 18" OAK  
 .....

MARY MURRAY  
 DB 12303 PG 95  
 MB 2003 PG 1404

59  
 CITY OF RALEIGH  
 DB 10505 PG 886  
 MB 1982 PG 146

60  
 CITY OF RALEIGH  
 DB 8644 PG.809  
 MB 2002 PG.23

-L-  
 PI Sta 12+56.62      PI Sta 14+01.26  
 $\Delta = 0^\circ 24' 37.3" (LT)$        $\Delta = 0^\circ 25' 06.1" (RT)$   
 $D = 0' 17' 11.3"$        $D = 0' 17' 11.3"$   
 $L = 143.24'$        $L = 146.04'$   
 $T = 71.62'$        $T = 73.02'$   
 $R = 20,000.00'$        $R = 20,000.00'$   
 $e = EXIST.$        $e = EXIST.$



PROJECT REFERENCE NO. <i>U-5748</i>	SHEET NO. <i>16</i>
RW SHEET NO.	
ROADWAY DESIGN ENGINEER 	HYDRAULICS ENGINEER 
Prepared in the Office of: <b>AECOM</b>	NC FIRM LICENSE No.F-0342 5438 Wade Park Blvd., Suite 200 Raleigh, NC 27607 199461-800
<b>DOCUMENT NOT CONSIDERED FINAL UNLESS ALL SIGNATURES COMPLETED</b>	

FOR -L- PROFILE, SEE SHEET NO. 17  
 FOR -L1- PROFILE, SEE SHEET NO. 30