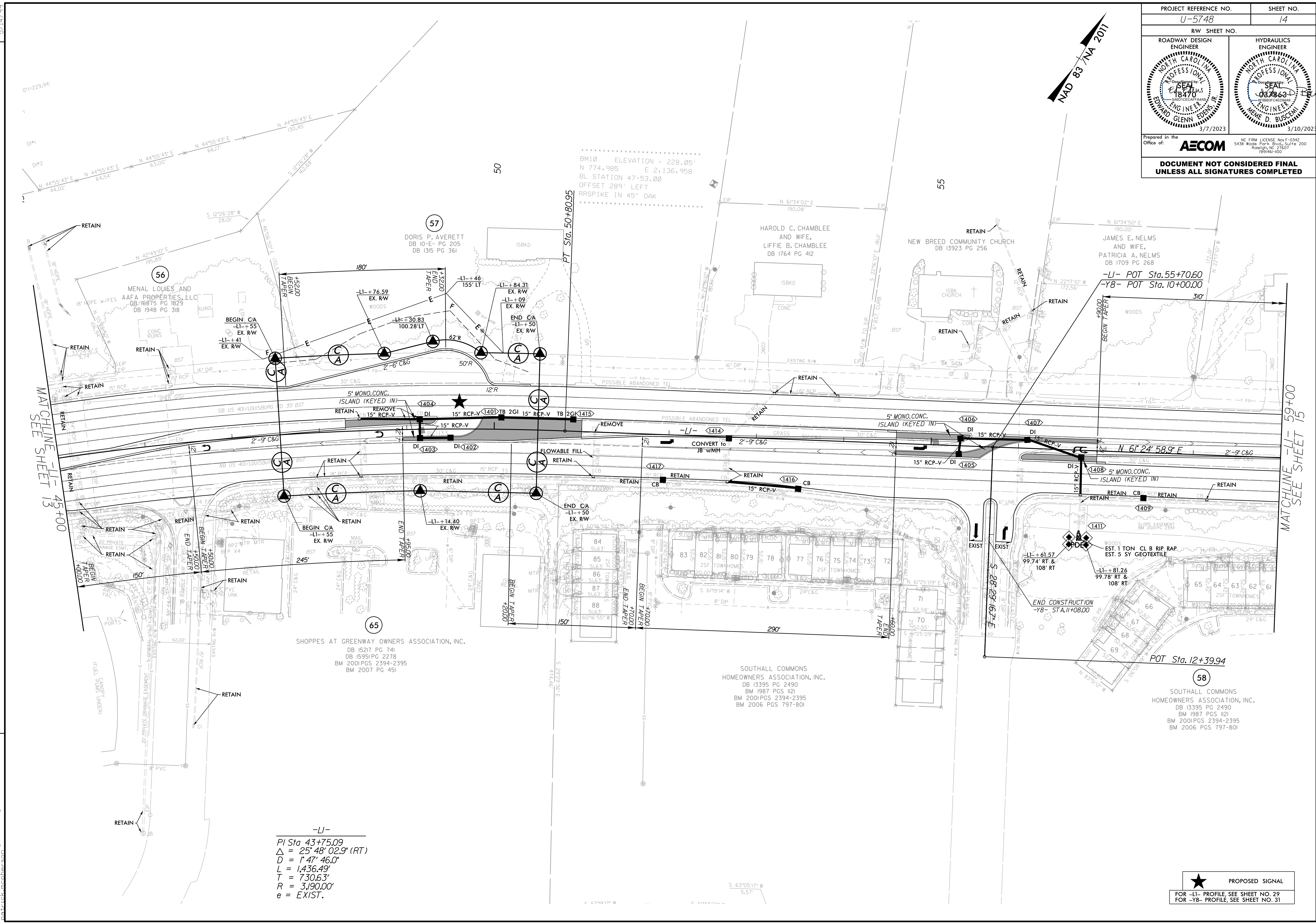


PROJECT REFERENCE NO. U-5748		SHEET NO. 14	
ROADWAY DESIGN ENGINEER		HYDRAULICS ENGINEER	
Prepared in the Office of:		AECOM <small>NC FIRM LICENSE No. F-0342 5438 Wade Park Blvd., Suite 200 Raleigh, NC 27607 199461-000</small>	
DOCUMENT NOT CONSIDERED FINAL UNLESS ALL SIGNATURES COMPLETED			



REVISIONS

MATCHLINE - LI- 45+00
SEE SHEET 13

MATCHLINE - LI- 59+00
SEE SHEET 15

-LI-

PI Sta. 43+75.09
 $\Delta = 25' 48'' 02.9''$ (RT)
 $D = 1' 47'' 46.0''$
 $L = 1,436.49'$
 $T = 730.63'$
 $R = 3,190.00'$
 $e = EXIST.$

★ PROPOSED SIGNAL

FOR -LI- PROFILE, SEE SHEET NO. 29
 FOR -Y8- PROFILE, SEE SHEET NO. 31

2/3/2023 10:28_r.dwg_psh14.dgn
battick.mohenson

5/14/99