
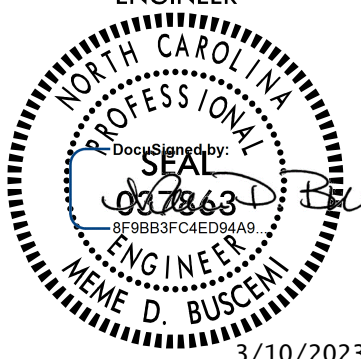
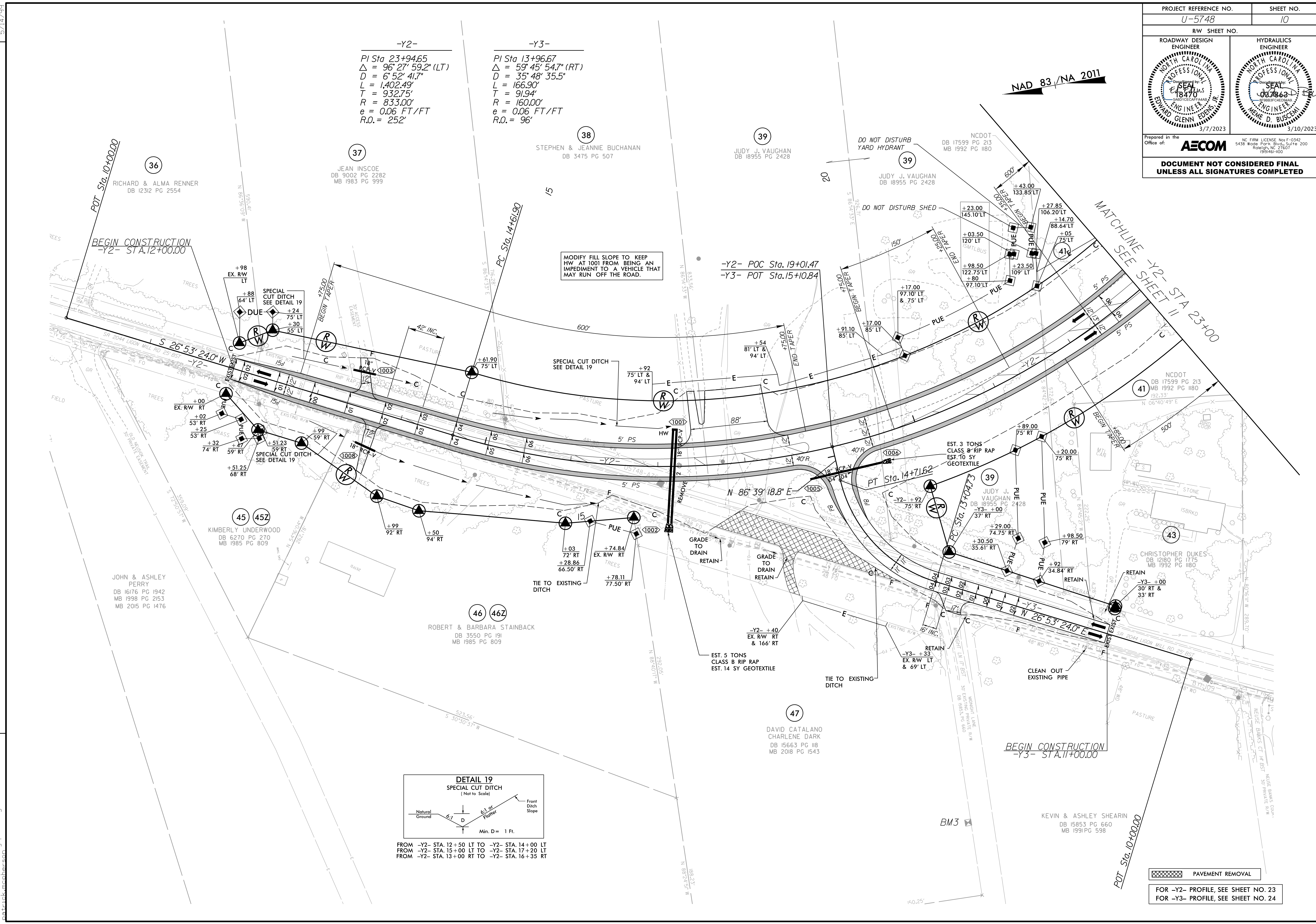


5/14/99

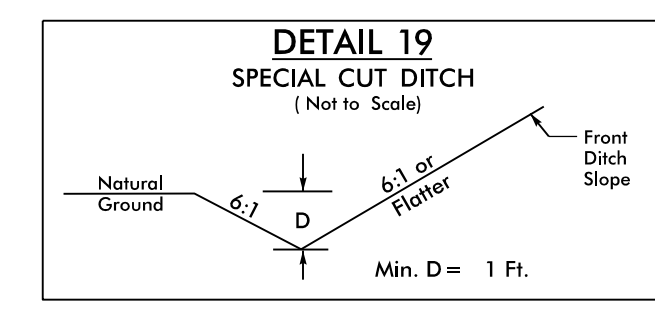
PROJECT REFERENCE NO. U-5748		SHEET NO. 10	
RW SHEET NO.			
ROADWAY DESIGN ENGINEER		HYDRAULICS ENGINEER	
			
Prepared in the Office of: <b>AECOM</b>			
<small>NC FIRM LICENSE No. F-0342 5438 Wade Park Blvd., Suite 200 Raleigh, NC 27607 (919)461-1000</small>			
<b>DOCUMENT NOT CONSIDERED FINAL UNLESS ALL SIGNATURES COMPLETED</b>			



**-Y2-**  
 PI Sta 23+94.65  
 $\Delta = 96^{\circ} 27' 59.2''$  (LT)  
 $D = 6^{\circ} 52' 41.7''$   
 $L = 1,402.49'$   
 $T = 932.75'$   
 $R = 833.00'$   
 $e = 0.06$  FT/FT  
 $R.O. = 252'$

**-Y3-**  
 PI Sta 13+96.67  
 $\Delta = 59^{\circ} 45' 54.7''$  (RT)  
 $D = 35^{\circ} 48' 35.5''$   
 $L = 166.90'$   
 $T = 91.94'$   
 $R = 160.00'$   
 $e = 0.06$  FT/FT  
 $R.O. = 96'$


MODIFY FILL SLOPE TO KEEP HW AT 1001 FROM BEING AN IMPEDIMENT TO A VEHICLE THAT MAY RUN OFF THE ROAD.



FROM -Y2- STA. 12+50 LT TO -Y2- STA. 14+00 LT  
 FROM -Y2- STA. 15+00 LT TO -Y2- STA. 17+20 LT  
 FROM -Y2- STA. 13+00 RT TO -Y2- STA. 16+35 RT

REVISIONS

2/3/2023 8:00am psht10.dgn  
patrick.mohr@aec.com

 PAVEMENT REMOVAL

FOR -Y2- PROFILE, SEE SHEET NO. 23  
 FOR -Y3- PROFILE, SEE SHEET NO. 24