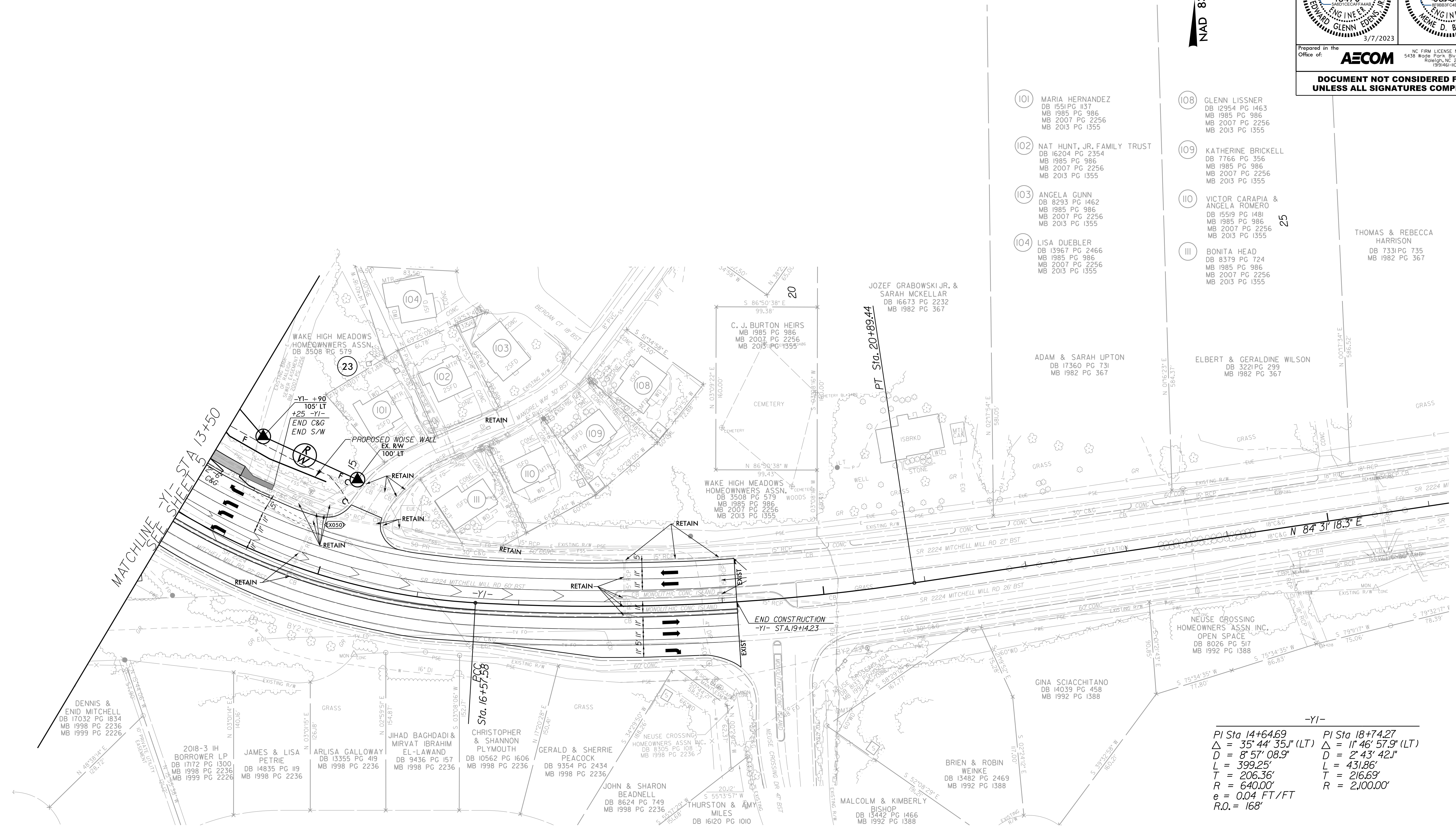


5/14/99

REVISIONS

PROJECT REFERENCE NO. <b>U-5748</b>	SHEET NO. <b>9</b>
RW SHEET NO.	
ROADWAY DESIGN ENGINEER	HYDRAULICS ENGINEER
Prepared in the Office of: <b>AECOM</b>	
NC FIRM LICENSE No.F-0342 5438 Wade Park Blvd., Suite 200 Raleigh, NC 27607 199461-000	
<b>CONSTRUCTION NOT CONSIDERED FINAL UNLESS ALL SIGNATURES COMPLETED</b>	

NAD 83 / NA 2011



- 101 MARIA HERNANDEZ  
DB 1551 PG 137  
MB 1985 PG 986  
MB 2007 PG 2256  
MB 2013 PG 1355
- 102 NAT HUNT, JR. FAMILY TRUST  
DB 16204 PG 2354  
MB 1985 PG 986  
MB 2007 PG 2256  
MB 2013 PG 1355
- 103 ANGELA GUNN  
DB 8293 PG 1462  
MB 1985 PG 986  
MB 2007 PG 2256  
MB 2013 PG 1355
- 104 LISA DUEBLER  
DB 13967 PG 2466  
MB 1985 PG 986  
MB 2007 PG 2256  
MB 2013 PG 1355
- 108 GLENN LISSNER  
DB 12954 PG 1463  
MB 1985 PG 986  
MB 2007 PG 986  
MB 2013 PG 1355
- 109 KATHERINE BRICKELL  
DB 7766 PG 356  
MB 1985 PG 986  
MB 2007 PG 2256  
MB 2013 PG 1355
- 110 VICTOR CARAPIA & ANGELA ROMERO  
DB 15519 PG 1491  
MB 1985 PG 986  
MB 2007 PG 2256  
MB 2013 PG 1355
- 111 BONITA HEAD  
DB 8379 PG 724  
MB 1985 PG 986  
MB 2007 PG 2256  
MB 2013 PG 1355

-Y1-

$PI\ Sta\ 14+64.69$ $\Delta = 35' 44' 35.1'' (LT)$ $D = 8' 57' 08.9''$ $L = 399.25'$ $T = 206.36'$ $R = 640.00'$ $e = 0.04\ FT/FT$ $R.O. = 168'$	$PI\ Sta\ 18+74.27$ $\Delta = 1' 46' 57.9'' (LT)$ $D = 2' 43' 42.1''$ $L = 431.86'$ $T = 216.69'$ $R = 2,100.00'$
---	--

FOR NOISE WALL DETAILS, SEE SHEET 2N-1  
FOR -Y1- PROFILE, SEE SHEET NO. 22

2/3/2023 10:38\_rdu\_psh09.dgn  
patrick.moehrs@aec.com