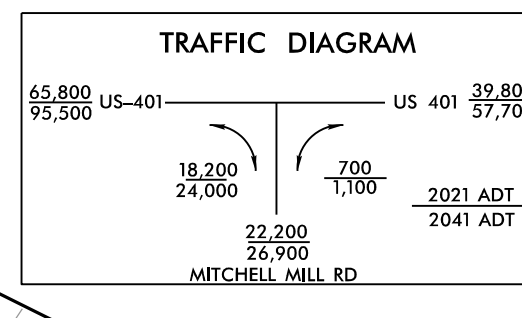
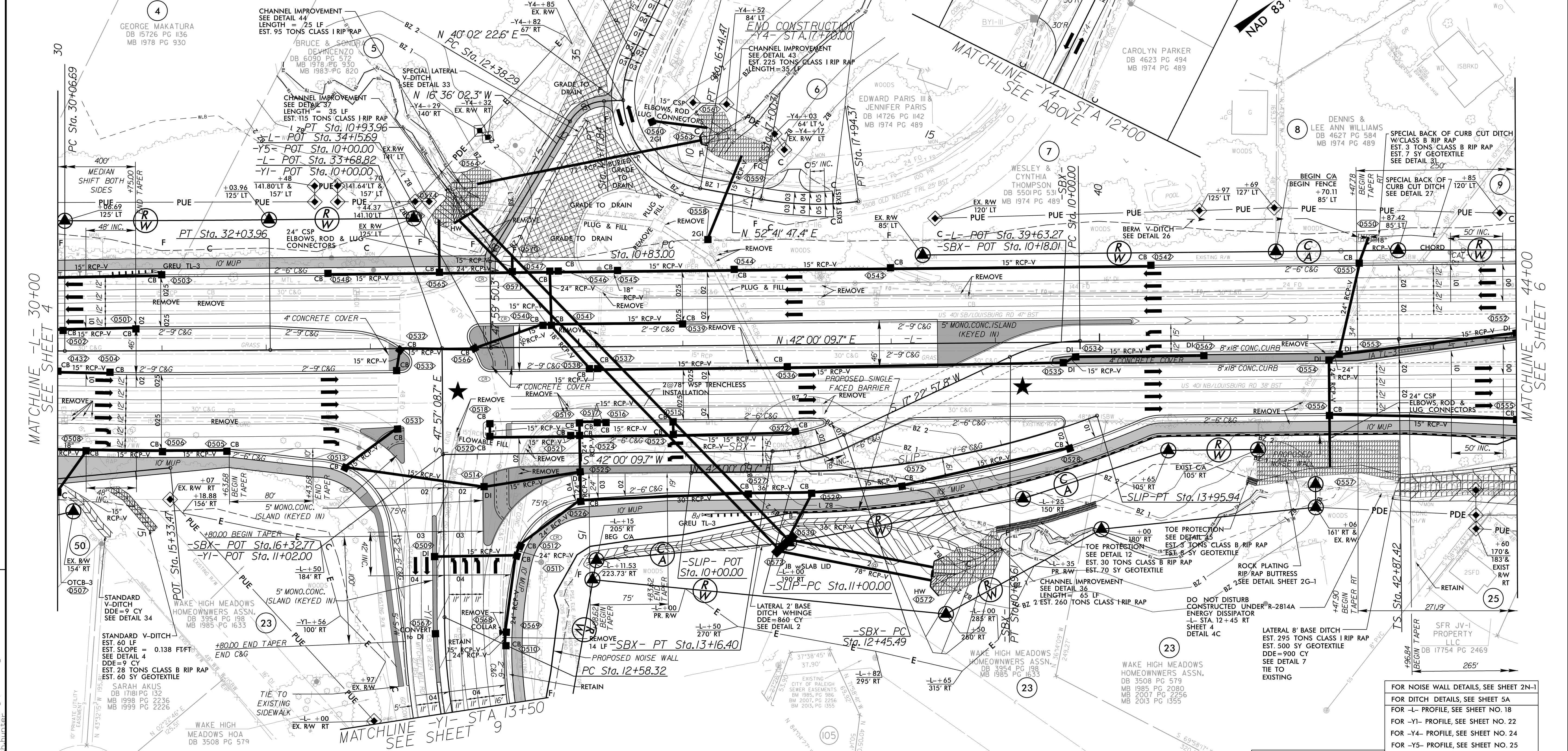


PROJECT REFERENCE NO. U-5748		SHEET NO. 5	
RW SHEET NO.		HYDRAULICS ENGINEER	
ROADWAY DESIGN ENGINEER		SEAL 1870 EDWARD GLENN EDWARDS, JR. 6/7/2023	
SEAL 1870 EDWARD GLENN EDWARDS, JR. 6/7/2023		SEAL 1870 D. BUSCHINI 6/9/2023	
Prepared in the Office of: AECOM NC FIRM LICENSE No. F-0342 5438 Wade Park Blvd., Suite 200 Raleigh, NC 27607 199461-000			
DOCUMENT NOT CONSIDERED FINAL UNLESS ALL SIGNATURES COMPLETED			



-L- PI Sta 31+05.33 Δ = 0° 33' 54.4" (LT) D = 0° 17' 11.3" L = 197.26' T = 98.63' R = 20,000.00' e = NC	-Y4- PI Sta 44+20.76 Δ = 0° 54' 13.4" D = 200.00' L = 133.34' T = 66.67' R = 90.00'	-Y5- PI Sta 15+94.58 Δ = 106° 18' 22.6" (LT) D = 63° 39' 43.1" L = 166.99' T = 120.10' R = 90.00' R.O. = 60'	-Y1- PI Sta 17+47.92 Δ = 17° 44' 30.3" (LT) D = 18° 56' 54.4" L = 93.66' T = 47.21' R = 302.46' R.O. = 45'	-SLIP- PI Sta 12+49.48 Δ = 19° 56' 54.4" (LT) D = 6° 44' 26.4" L = 295.94' T = 149.48' R = 850.00' e = 0.04 FT/FT R.O. = See Plans
-SBX- PI Sta 12+81.50 Δ = 24° 37' 11.9" (RT) D = 34° 43' 29.0" L = 70.90' T = 36.01' R = 165.00'	-Y5- PI Sta 10+88.62 Δ = 31° 23' 48.0" (RT) D = 286° 28' 44.0" L = 10.96' T = 5.62' R = 20.00'	-Y1- PI Sta 14+64.69 Δ = 35° 44' 35.1" (LT) D = 8° 57' 08.9" L = 399.25' T = 206.36' R = 640.00' e = 0.04 FT/FT R.O. = 168'	-SLIP- PI Sta 12+49.48 Δ = 19° 56' 54.4" (LT) D = 6° 44' 26.4" L = 295.94' T = 149.48' R = 850.00' e = 0.04 FT/FT R.O. = See Plans	



REVISIONS

6/7/2023 3:48:45 PM r_dj_psh05.dgn
elizabeth.burkhardt

	PAVEMENT REMOVAL
	PROPOSED SIGNAL

FOR NOISE WALL DETAILS, SEE SHEET 2N-1
 FOR DITCH DETAILS, SEE SHEET 5A
 FOR -L- PROFILE, SEE SHEET NO. 18
 FOR -Y1- PROFILE, SEE SHEET NO. 22
 FOR -Y4- PROFILE, SEE SHEET NO. 24
 FOR -Y5- PROFILE, SEE SHEET NO. 25
 FOR -SLIP- PROFILE, SEE SHEET NO. 22
 FOR -SBX- PROFILE, SEE SHEET NO. 25
 FOR -MUI- PROFILE, SEE SHEET NO. 27