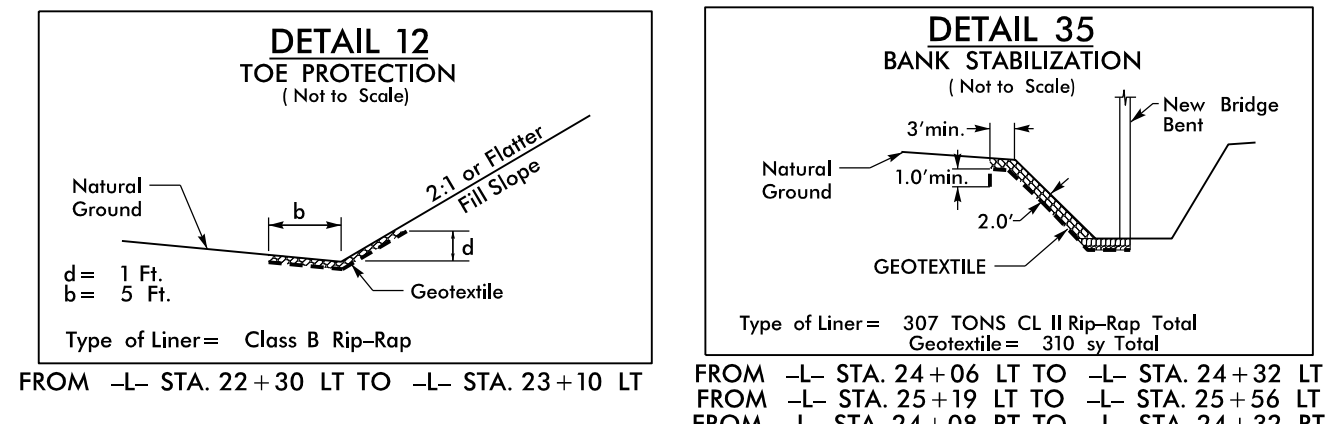
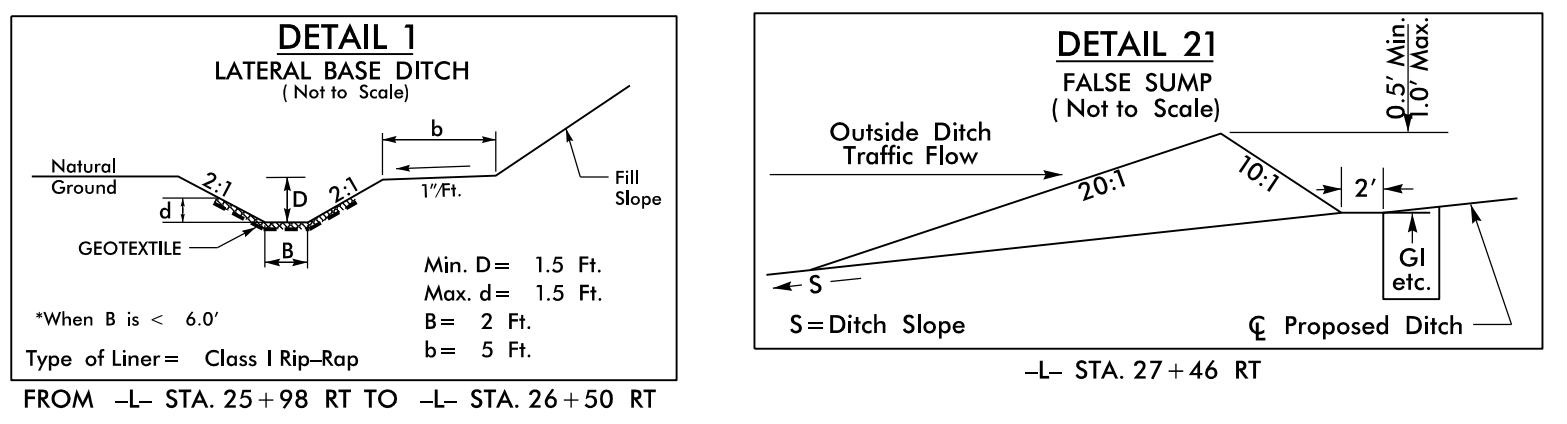


5/14/99

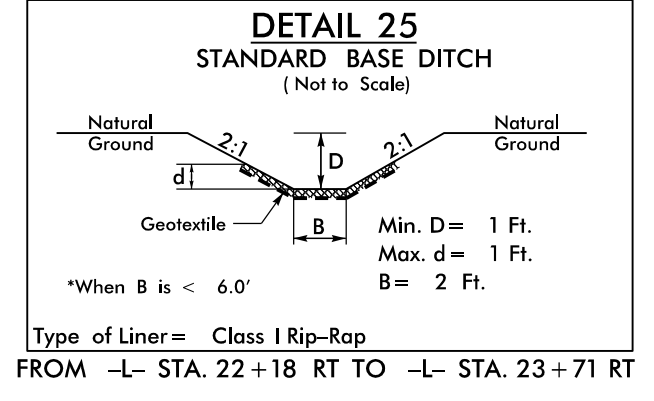
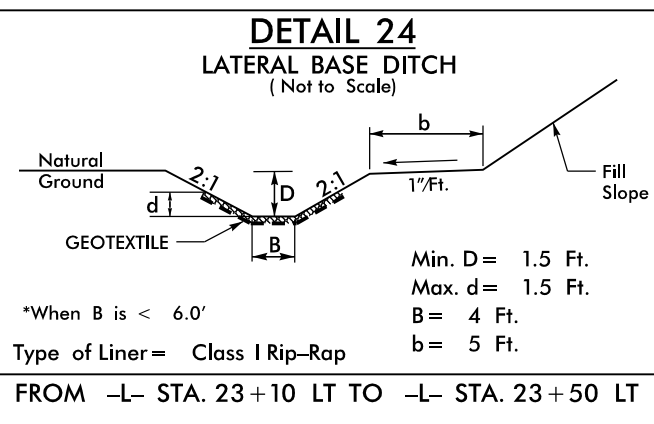
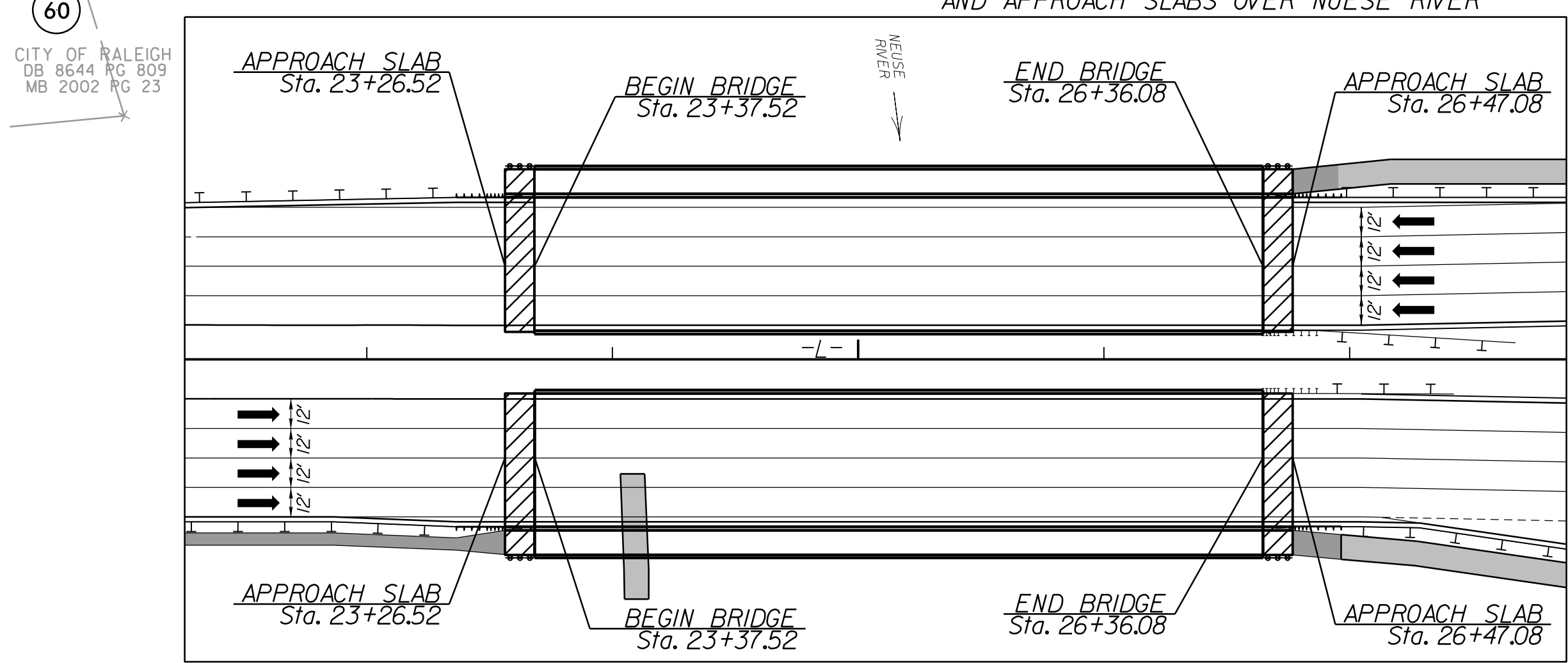
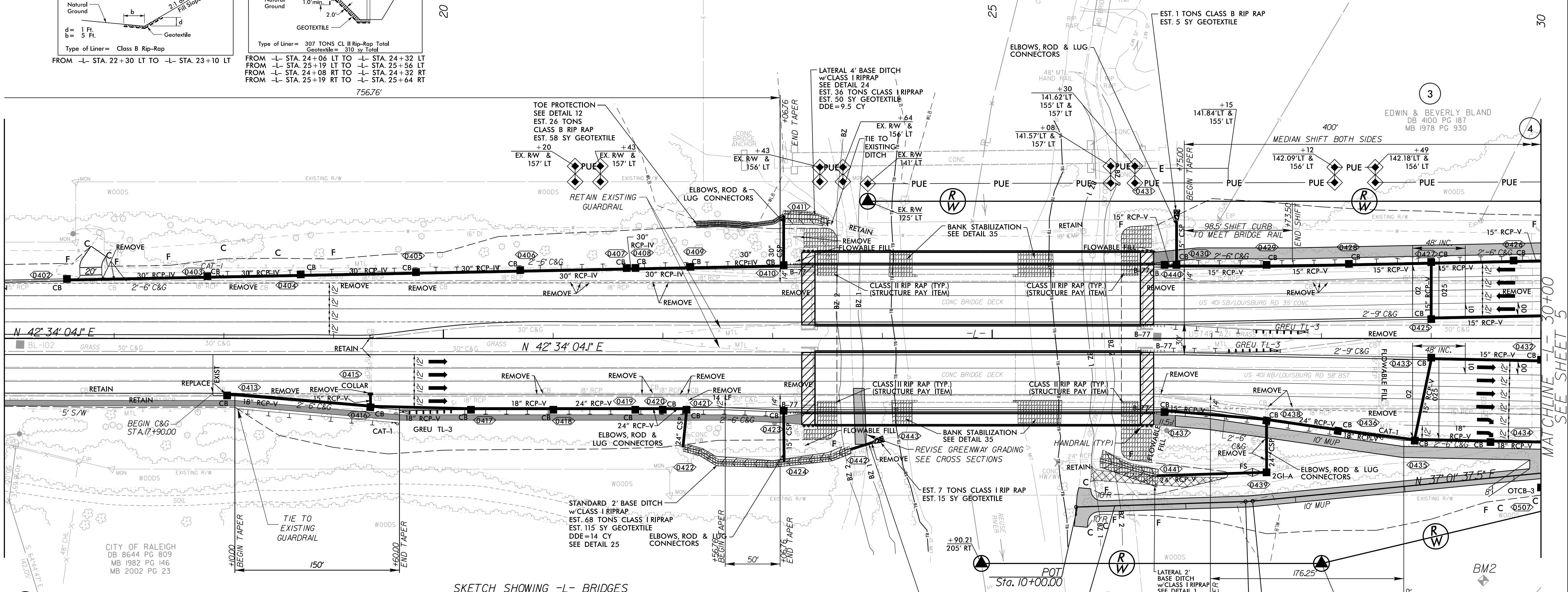
PROJECT REFERENCE NO. U-5748		SHEET NO. 4	
ROADWAY DESIGN ENGINEER		HYDRAULICS ENGINEER	
Prepared in the Office of: AECOM NC FIRM LICENSE No. F-0342 5438 Wade Park Blvd., Suite 200 Raleigh, NC 27607 919461-000			
DOCUMENT NOT CONSIDERED FINAL UNLESS ALL SIGNATURES COMPLETED			



MARY MURRAY
DB 12303 PG 95
MB 2003 PG 1404

MATCHLINE -L- 16+00
SEE SHEET 16

MATCHLINE 30+00
SEE SHEET 5



-MUI-

PI Sta. 11+57.78
 $\Delta = 3' 40'' 59.4'' (LT)$
 $D = 57' 17'' 44.8''$
 $L = 6.43'$
 $T = 3.22''$
 $R = 100.00'$

ANABEL AREVALO
DB 674 PG 441
MB 1995 PG 986
MB 2007 PG 2256
MB 2013 PG 1355

FOR -L- PROFILE, SEE SHEET NO. 17
FOR -MUI- PROFILE, SEE SHEET NO. 27

6/7/09 3:38_rdu_psh04.dgn
elizabeth.burton