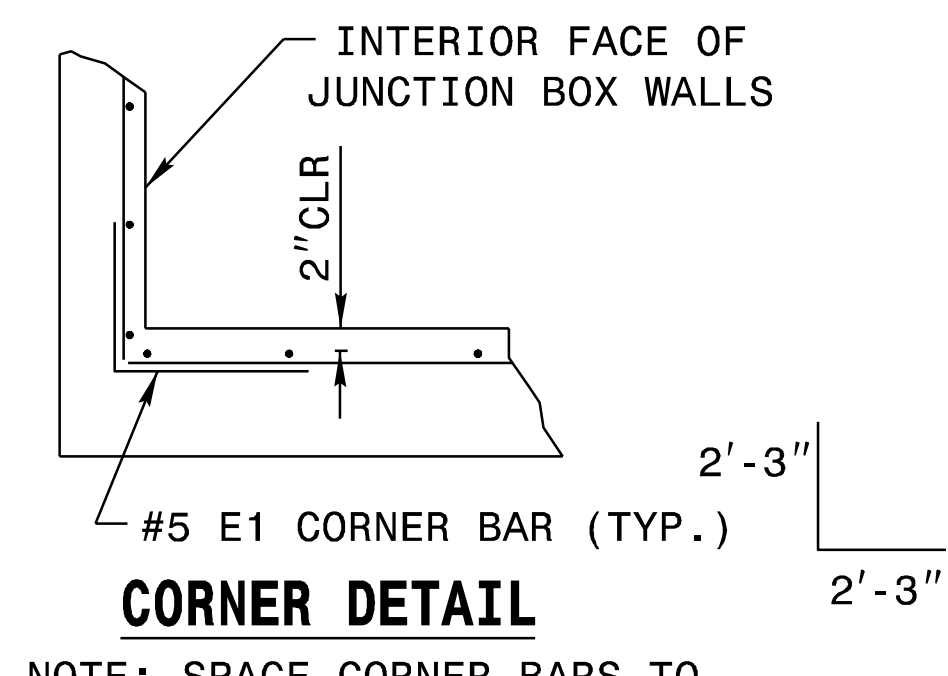
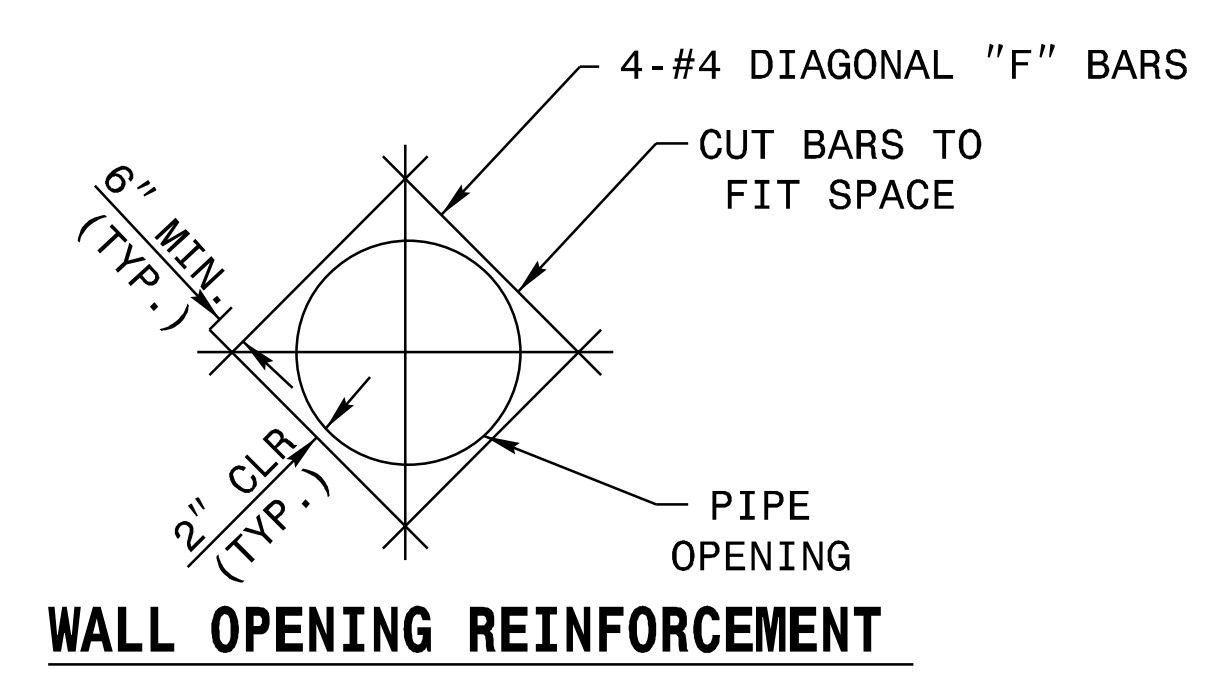
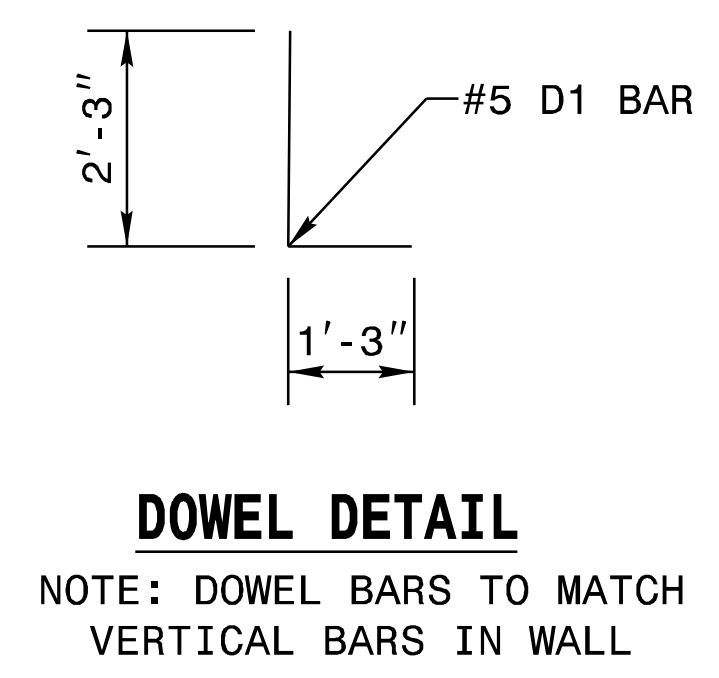
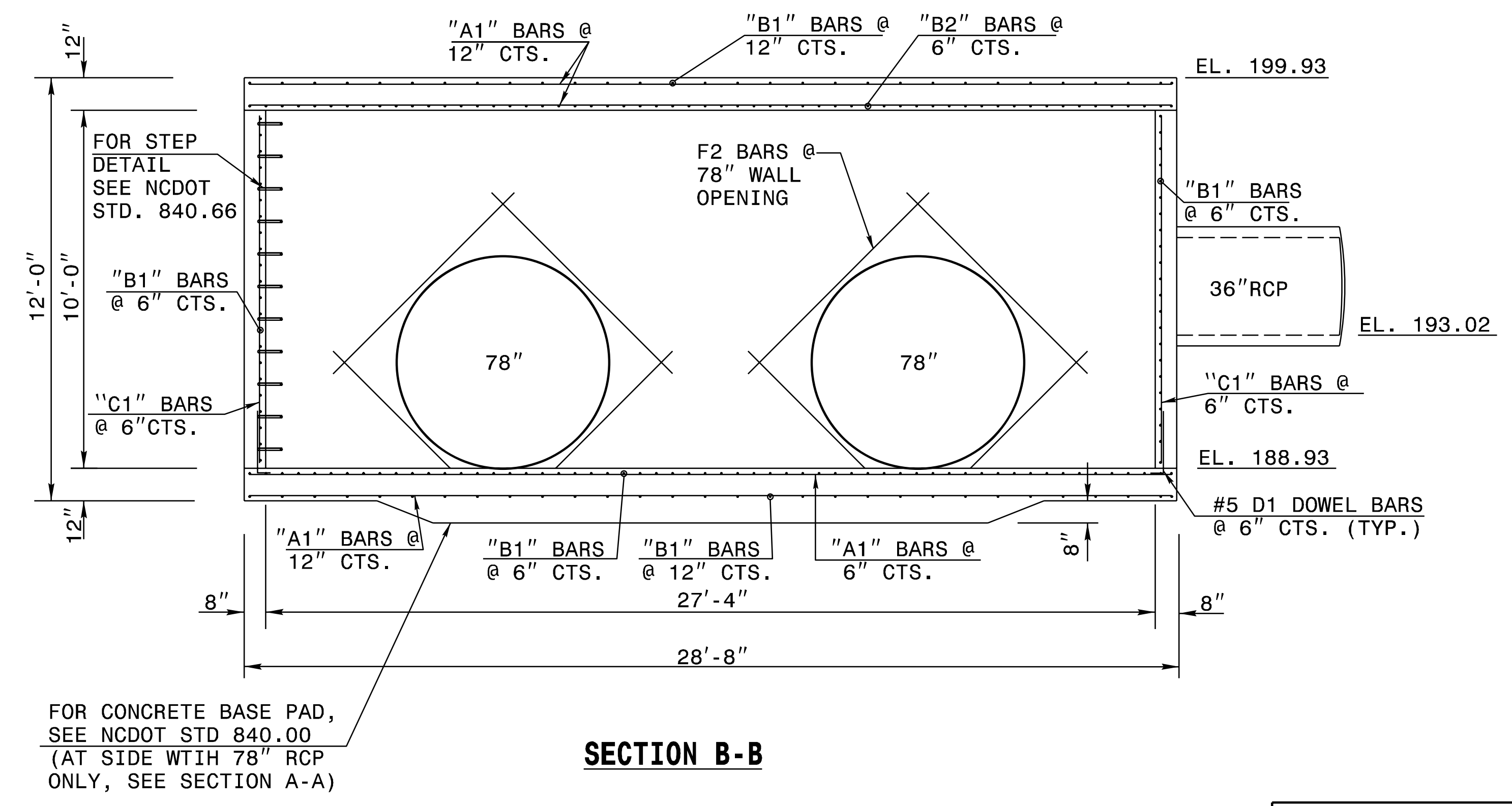
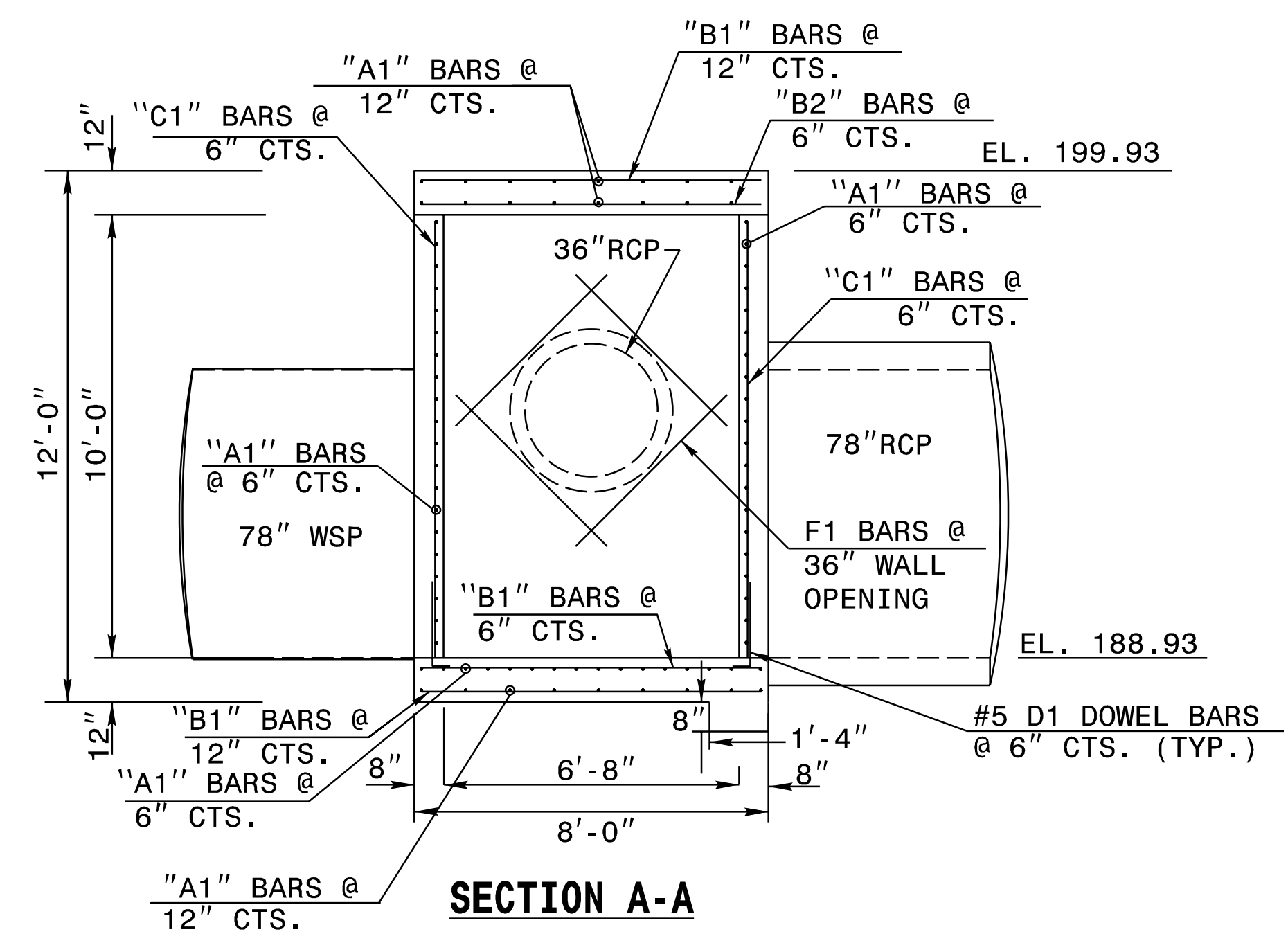


PLAN VIEW



NOTE: SPACE CORNER BARS TO MATCH HORIZ. BARS IN WALL



NOTE: DOWEL BARS TO MATCH VERTICAL BARS IN WALL

BILL OF MATERIALS				
BAR	QTY	SIZE	LENGTH	WEIGHT
A1	40	#5	28'-4"	1300
B1	116	#5	7'-8"	928
B2	58	#6	7'-8"	668
C1	146	#5	9'-10"	1497
D1	146	#5	3'-6"	533
F1	4	#4	5'-3"	14
F2	16	#4	9'-3"	99
TOTAL REINF. STEEL (lbs.)				5039
TOTAL CONC. CU. YDS.				35.3

NO DEDUCTIONS HAVE BEEN MADE TO ACCOMMODATE PIPES.

- GENERAL NOTES:**
1. USE CLASS "A" CONCRETE THROUGHOUT.
 2. CONSTRUCT CONCRETE BOX IN ACCORDANCE WITH SECTION 825 OF THE STANDARD SPECIFICATIONS.
 3. CONSTRUCT BOTTOM SLAB ON A MINIMUM 6" SUB-BASE OF COMPACTED COARSE AGGREGATE.
 4. USE FORMS TO CONSTRUCT THE BOTTOM SLAB.
 5. ADJUST LENGTH OF STEEL BARS AS NEEDED TO COMPENSATE FOR PIPES AND ACCESS OPENING.
 6. REINFORCING STEEL SHALL CONFORM TO ASTM A 615, GRADE 60 DEFORMED BARS.
 7. CUT OR BEND STEEL BARS AS NEEDED TO PROVIDE 2" CLEARANCE.
 8. PROVIDE JUNCTION BOX WITH STEPS 12" ON CENTER. USE STEPS WHICH COMPLY WITH STD. DRAWING 840.66.
 9. CHAMFER ALL EXPOSED CORNERS 1".
 10. BOX DIMENSIONS MAY BE FIELD ADJUSTED AS DIRECTED BY ENGINEER

DOCUMENT NOT CONSIDERED FINAL UNLESS ALL SIGNATURES COMPLETED



AECOM NC FIRM LICENSE No: F-0342
5438 Wade Park Blvd, Suite 200
Raleigh, NC 27607
(919) 854-6200

**DETAIL OF SPECIAL JUNCTION BOX
2@78" AND 36" RCP
NOT TO SCALE**

ORIGINAL BY: K. Sloan	DATE: 6/9/2022
MODIFIED BY: K. Sloan	DATE: 9/19/2022
CHECKED BY: C. Morrison	DATE: 9/16/2022
FILE SPEC.:	

9/19/2022 p:\aecom\ne-pw\bentley.com\AECOM_D521_NA_2020\Documents\60609754-U-5748 Ligon Mill\900-CAD GIS\910-CAD 70\NCDOT_TIP\Drainage\Special Details\Special_JBU5748_Special_JB.dgn karensloan