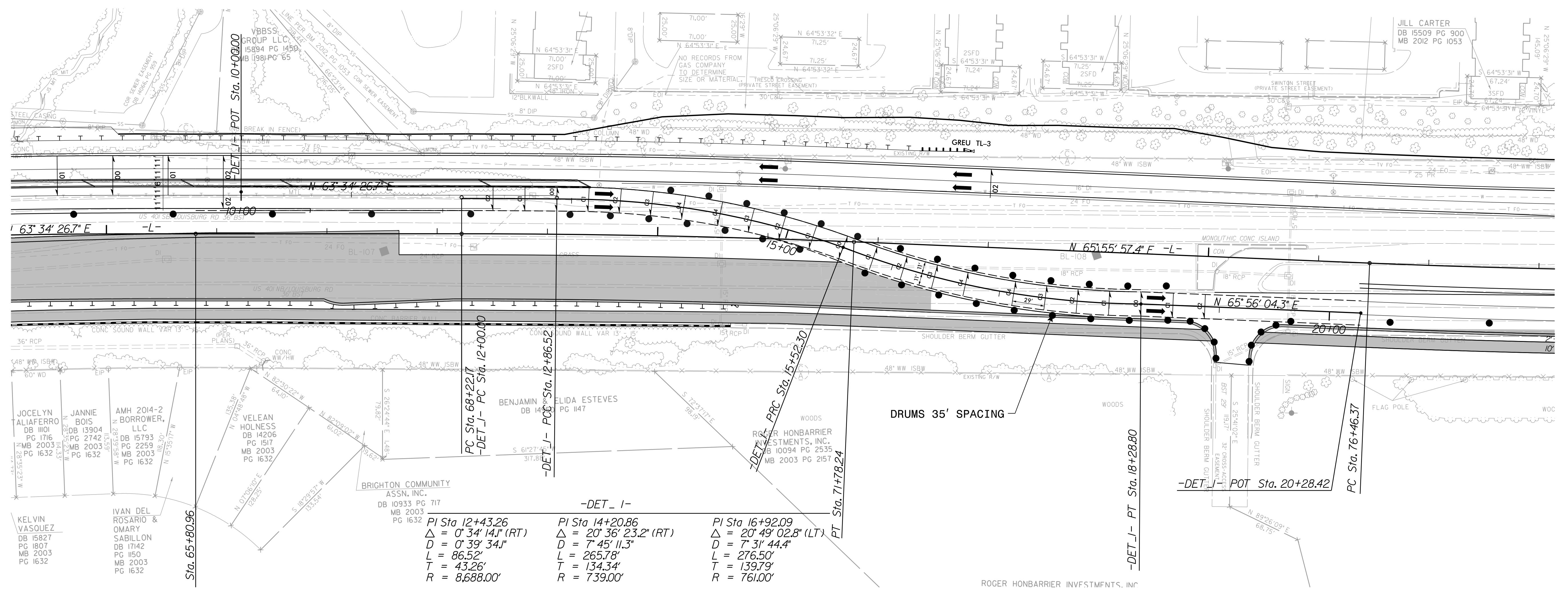
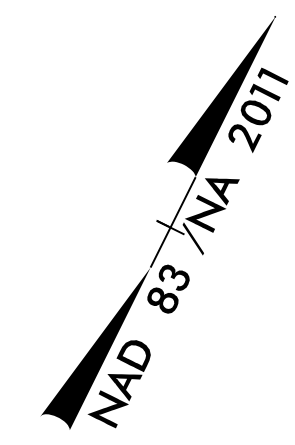


8/17/19

SEE ROADWAY PSH07-08 FOR PROPOSED DESIGN, DRAINAGE, AND RIGHT OF WAY DETAIL
SEE TRANSPORTATION MANAGEMENT PLANS FOR WZTC DETAILS

PROJECT REFERENCE NO. U-5748	SHEET NO. 2B-6
RW SHEET NO.	
ROADWAY DESIGN ENGINEER	
DOCUMENT NOT CONSIDERED FINAL UNLESS ALL SIGNATURES COMPLETED	



KELVIN VASQUEZ
DB 15827
PG 1807
MB 2003
PG 1632

IVAN DEL ROSARIO & OMARY SABILLON
DB 17142
PG 1150
MB 2003
PG 1632

JANNIE BOIS
DB 13904
PG 2742
MB 2003
PG 1632

AMH 2014-2 BORROWER, LLC
DB 15793
PG 2259
MB 2003
PG 1632

VELEAN HOLNESS
DB 14206
PG 1517
MB 2003
PG 1632

Sta. 65+80.96

PC Sta. 68+22.17
-DET_1- PC Sta. 12+00.00

BRIGHTON COMMUNITY ASSN. INC.
DB 10933 PG 717
MB 2003
PG 1632

PI Sta 12+43.26
Δ = 0° 34' 14.1" (RT)
D = 0' 39' 34.1"
L = 86.52'
T = 43.26'
R = 8,688.00'

-DET_1-
PI Sta 14+20.86
Δ = 20° 36' 23.2" (RT)
D = 7' 45' 11.3"
L = 265.78'
T = 134.34'
R = 7,399.00'

PI Sta 16+92.09
Δ = 20° 49' 02.8" (LT)
D = 7' 31' 44.4"
L = 276.50'
T = 139.79'
R = 761.00'

PT Sta. 71+78.24

-DET_1- PT Sta. 18+28.80

-DET_1- POT Sta. 20+28.42

PC Sta. 76+46.37

ROGER HONBARRIER INVESTMENTS, INC

REVISIONS

3/6/2023
U5748-Rdy_psh02B-6.dgn
Elizabeth Hunter