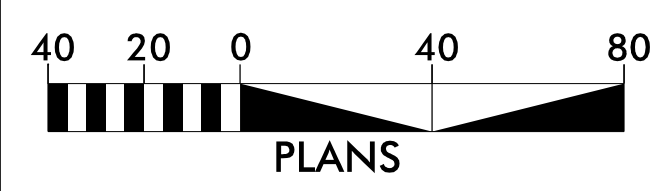
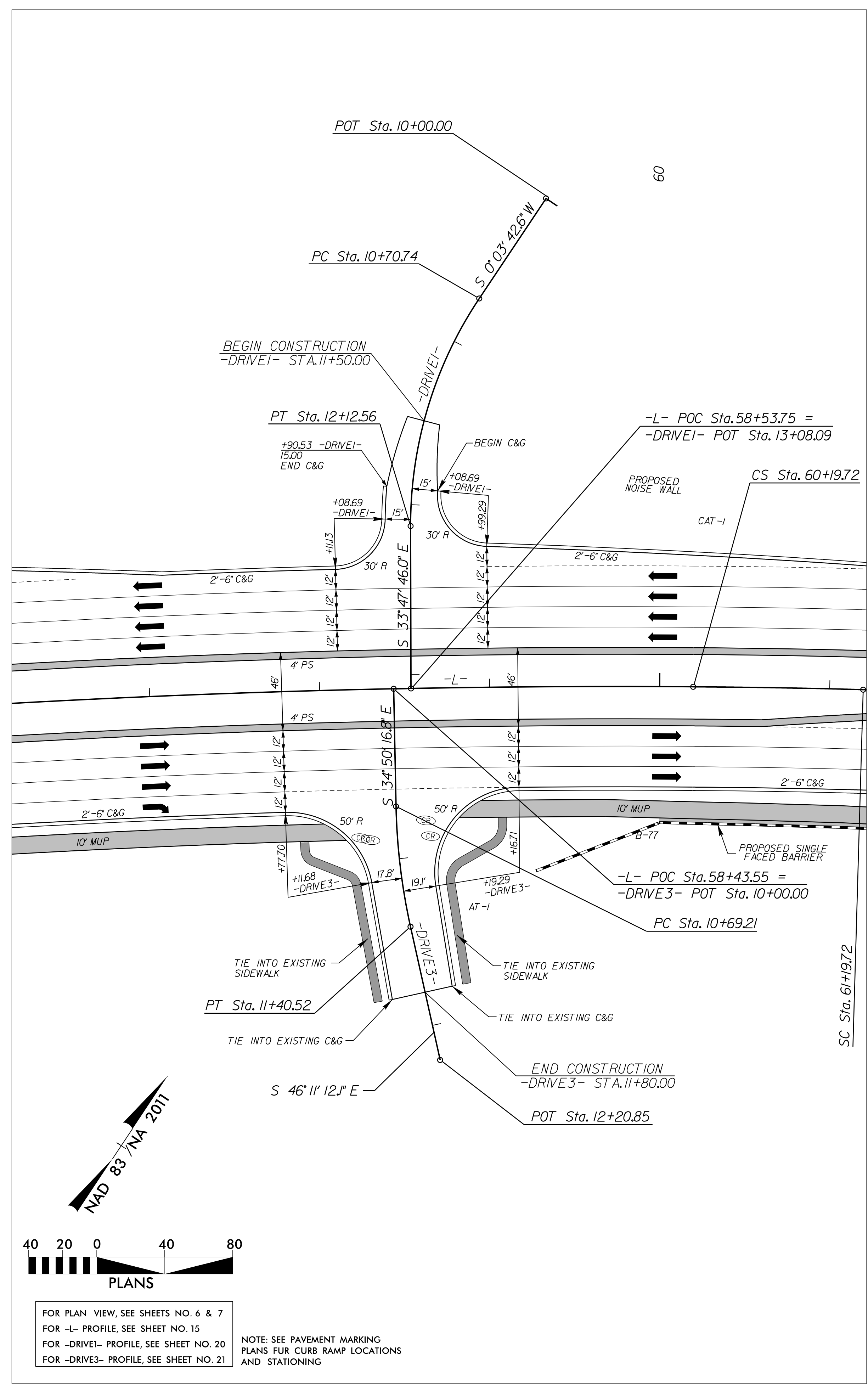


5/14/23

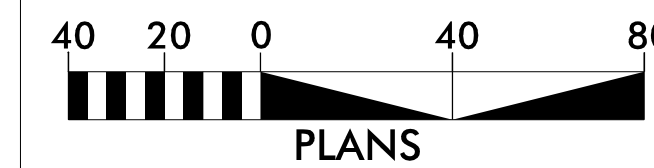
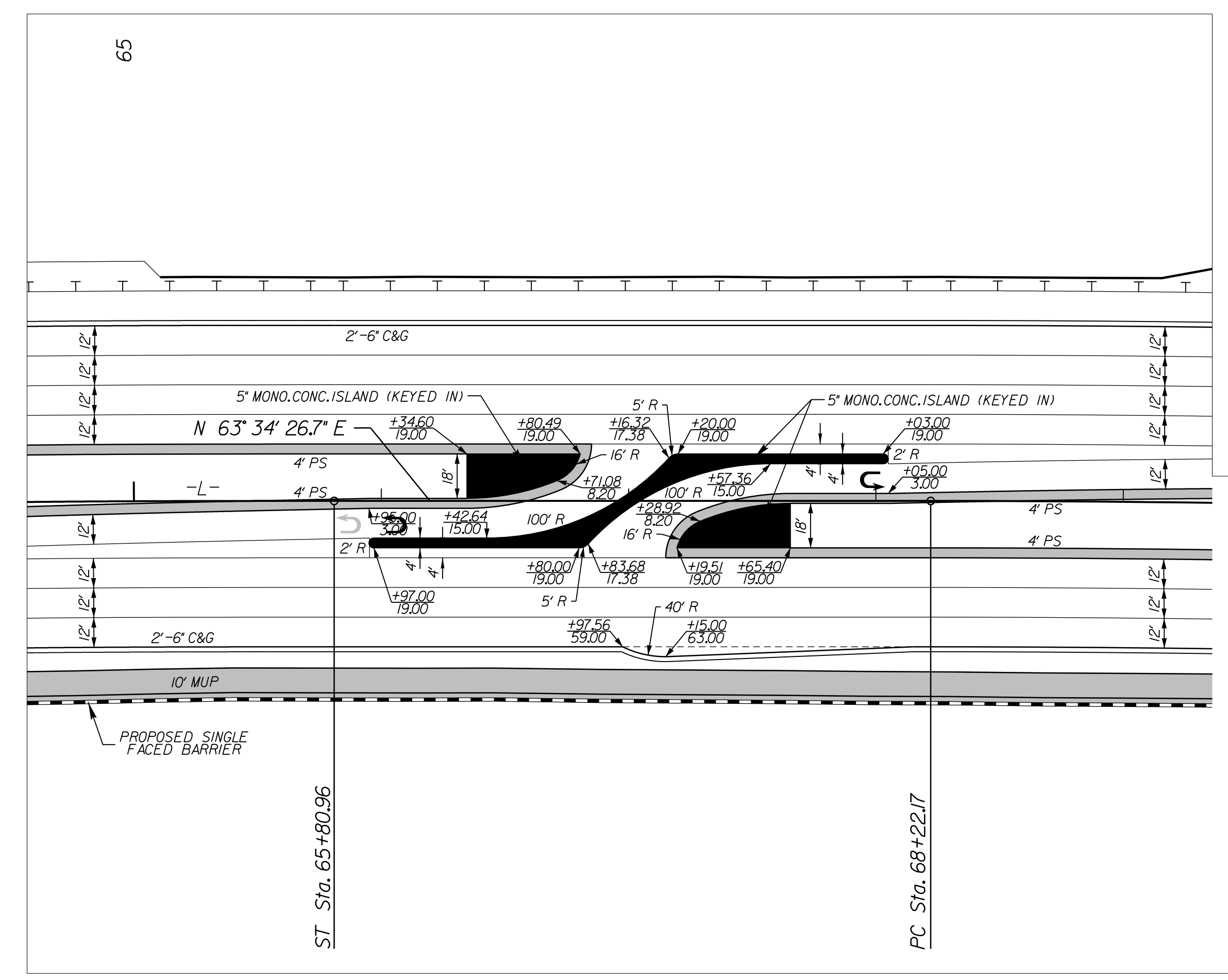
REVISIONS

1/3/2023\_rdy\_psh02B-3.dgn  
elizabeth.burton



FOR PLAN VIEW, SEE SHEETS NO. 6 & 7  
 FOR -L- PROFILE, SEE SHEET NO. 15  
 FOR -DRIVE1- PROFILE, SEE SHEET NO. 20  
 FOR -DRIVE3- PROFILE, SEE SHEET NO. 21

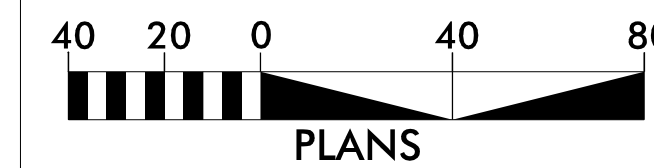
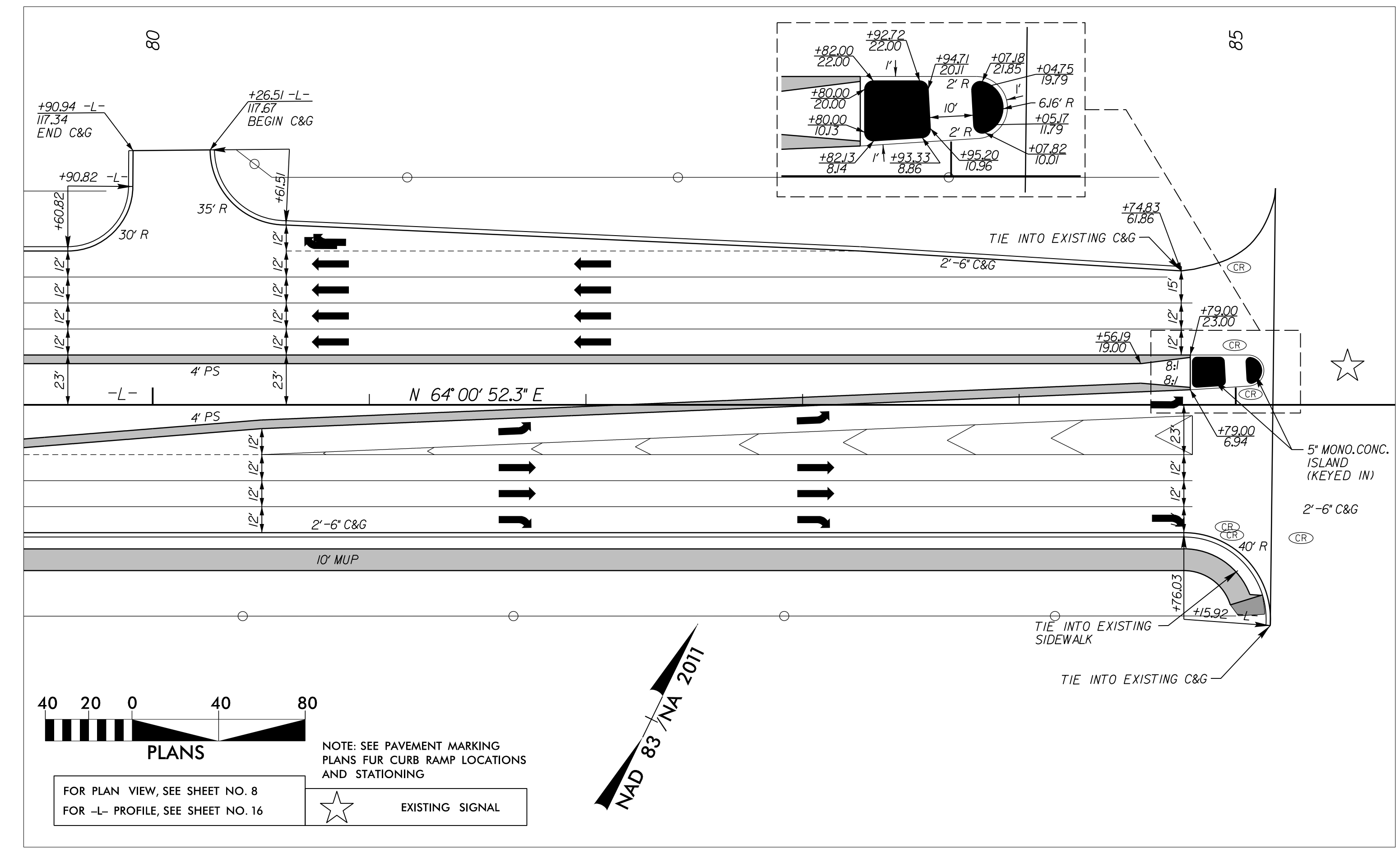
NOTE: SEE PAVEMENT MARKING PLANS FOR CURB RAMP LOCATIONS AND STATIONING



FOR PLAN VIEW, SEE SHEET NO. 8  
 FOR -L- PROFILE, SEE SHEET NO. 16

NOTE: SEE PAVEMENT MARKING PLANS FOR CURB RAMP LOCATIONS AND STATIONING

☆ EXISTING SIGNAL

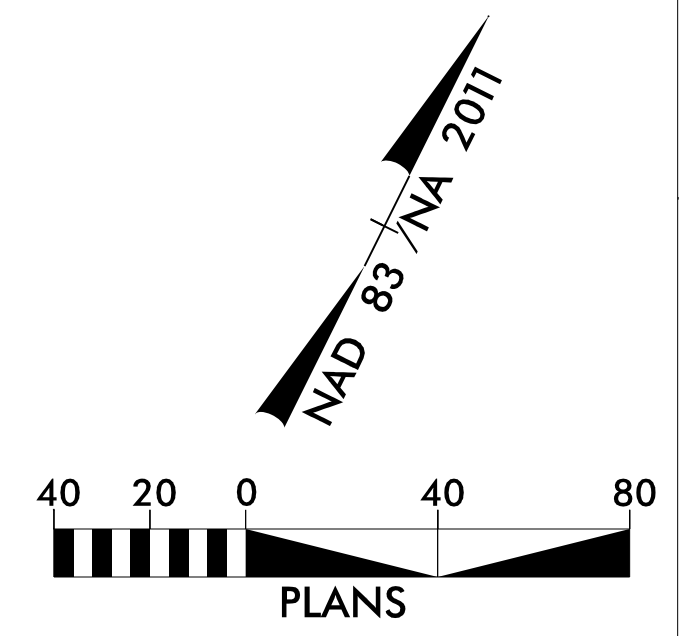


FOR PLAN VIEW, SEE SHEET NO. 8  
 FOR -L- PROFILE, SEE SHEET NO. 16

NOTE: SEE PAVEMENT MARKING PLANS FOR CURB RAMP LOCATIONS AND STATIONING

☆ EXISTING SIGNAL

|  |                          |
|--|--------------------------|
| PROJECT REFERENCE NO.<br><b>U-5748</b>   | SHEET NO.<br><b>2B-3</b> |
| RW SHEET NO.   |                          |
| ROADWAY DESIGN ENGINEER  |                          |
|  |                          |
| Prepared in the Office of: <b>AECOM</b><br><small>NC FIRM LICENSE No. F-0342<br/>         5438 Wade Park Blvd., Suite 200<br/>         Raleigh, NC 27617<br/>         199461-000</small> |                          |
| <b>DOCUMENT NOT CONSIDERED FINAL<br/>         UNLESS ALL SIGNATURES COMPLETED</b>  |                          |
| <h1>INTERSECTION<br/>         DETAIL SHEET</h1>  |                          |



FOR PLAN VIEW, SEE SHEET NO. 7  
 FOR -L- PROFILE, SEE SHEET NO. 15