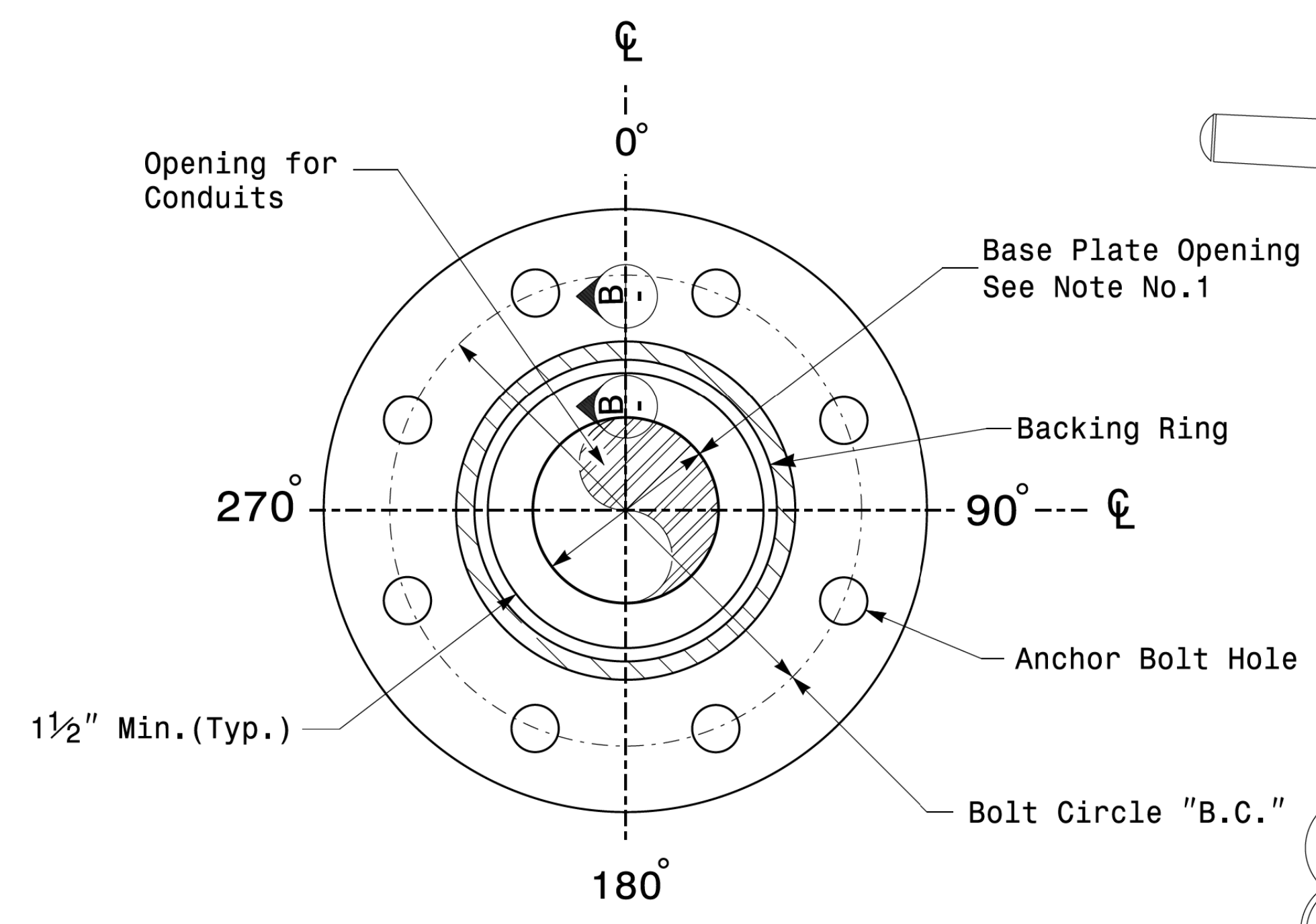
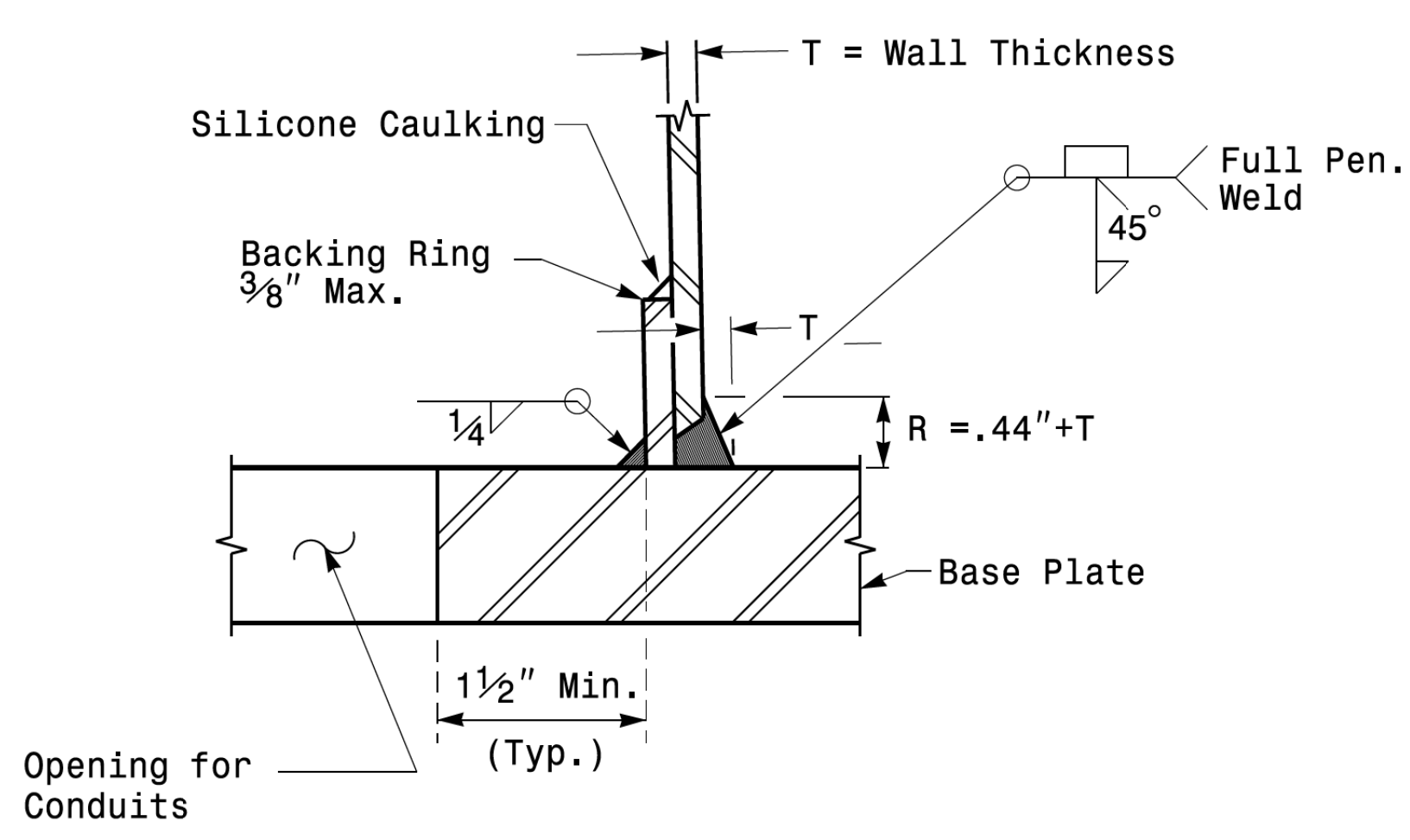


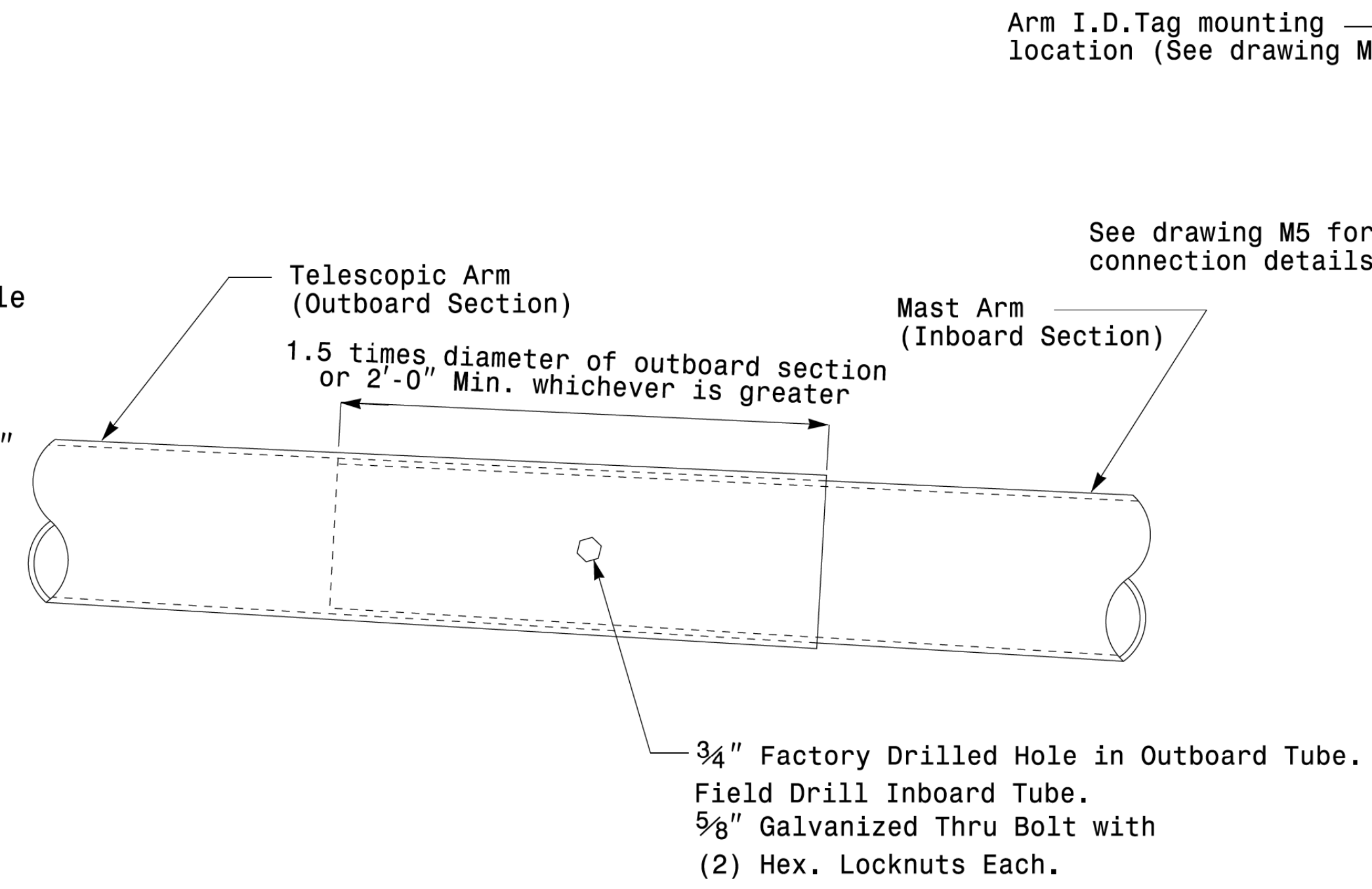
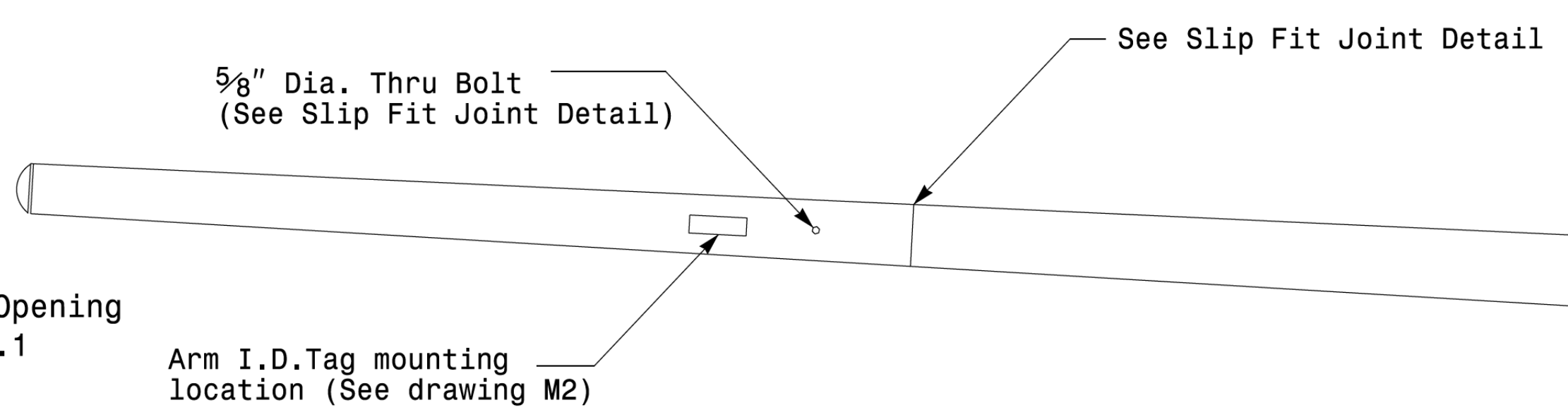
Note:  
 1. Opening in pole base plate shall be equal to pole base inside diameter minus 3 1/2" but shall not be less than 8 1/2".



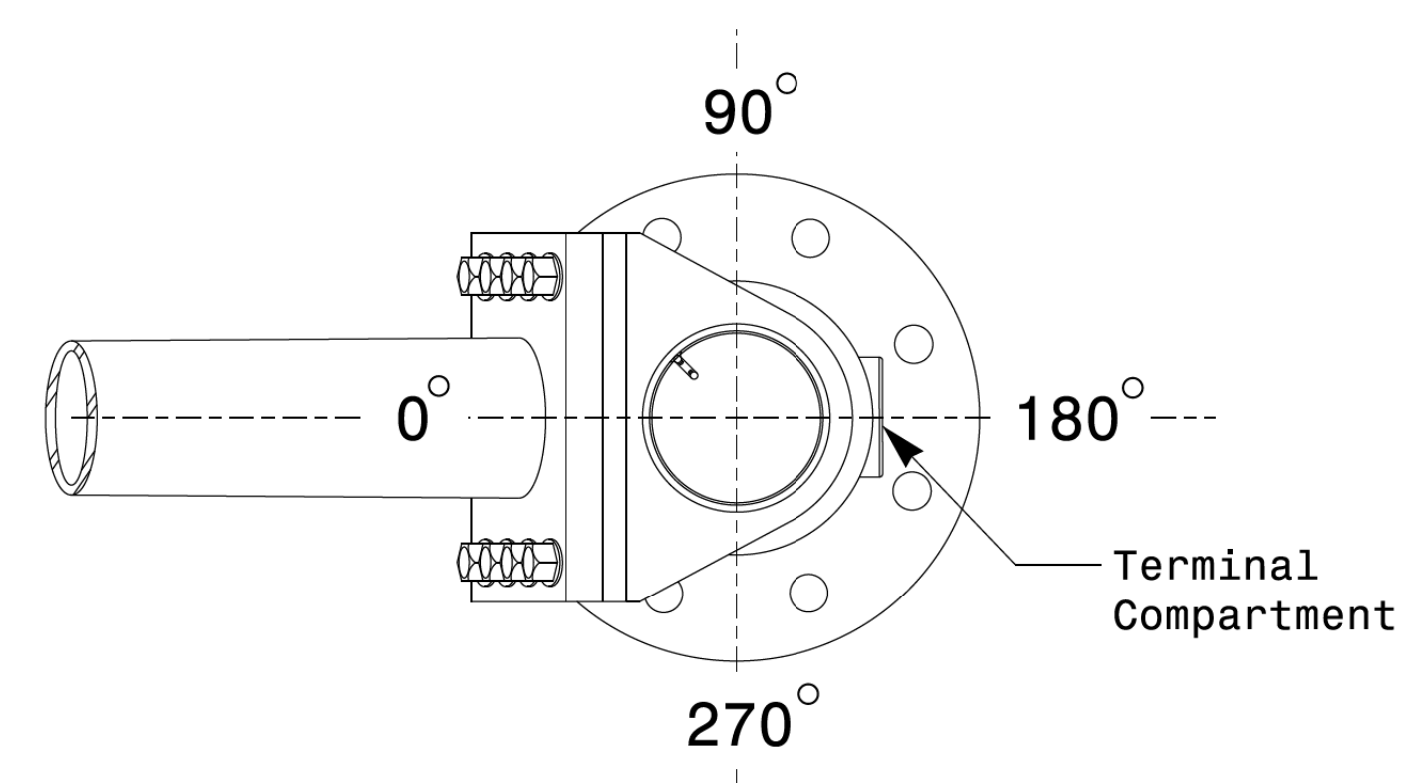
**Section A-A**  
**Pole Base Plate Details**



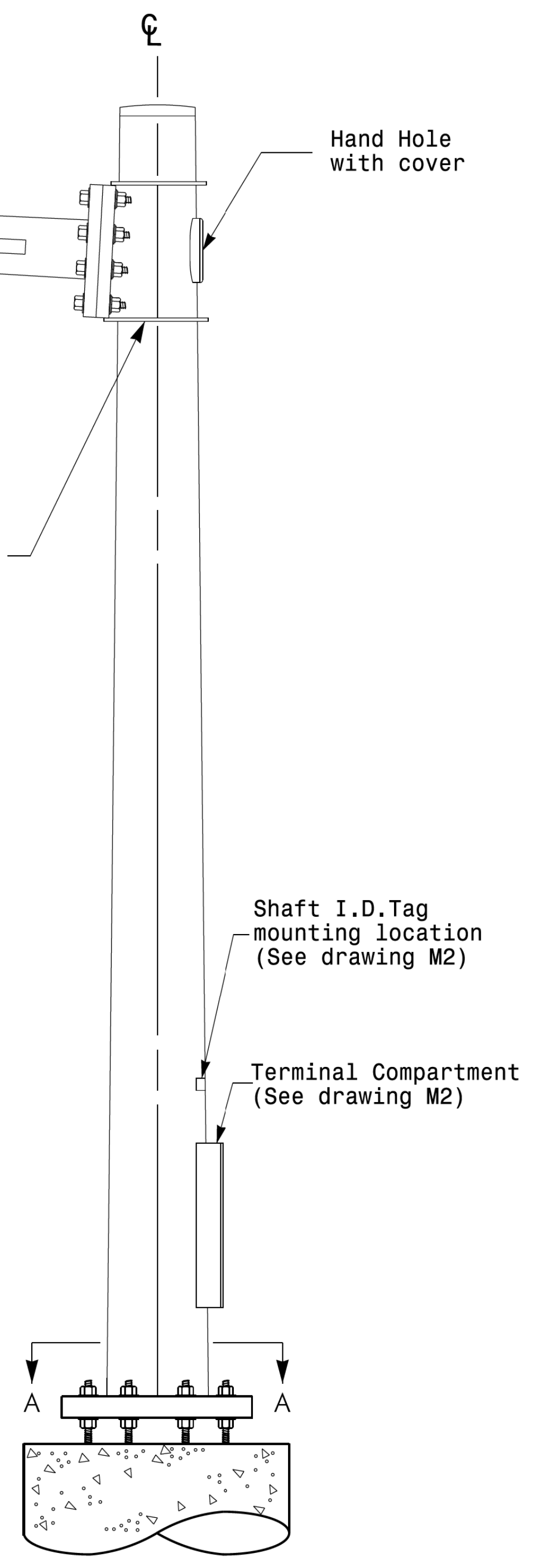
**Section B-B**  
 (Pole Attachment to Base Plate)  
**Full-Penetration Groove Weld Detail**



**Slip Fit Joint Detail for Mast Arm**



**Mast Arm Radial Orientation**



**Mast Arm Pole**

	Typical Fabrication Details For Mast Arm Poles		SEAL 
	PLAN DATE: OCTOBER 2017 DESIGNED BY: K.C. DURIGON PREPARED BY: N. BITTING REVIEWED BY: D.C. SARKAR	REVISIONS INIT. DATE	
SCALE 0 NA NONE	DocuSigned by: Dinesh C. Sarkar DATE: 10/11/2017		DATE

11-OCT-2017 08:33  
 P:\356237BD-AB29-4938-B88D-C98D63B45ADC\11-01-2017\11-01-2017\SIGDESIGN\SIGNALS\61 Design Section\Eastern Region\M4 Sheets\2016\2014 Sig.M4 Std. Fabrication Details\Mast Arm Poles.dgn  
 P:\356237BD-AB29-4938-B88D-C98D63B45ADC\11-01-2017\11-01-2017\SIGDESIGN\SIGNALS\61 Design Section\Eastern Region\M4 Sheets\2016\2014 Sig.M4 Std. Fabrication Details\Mast Arm Poles.dgn

**Fabrication Details - Mast Arm Poles**